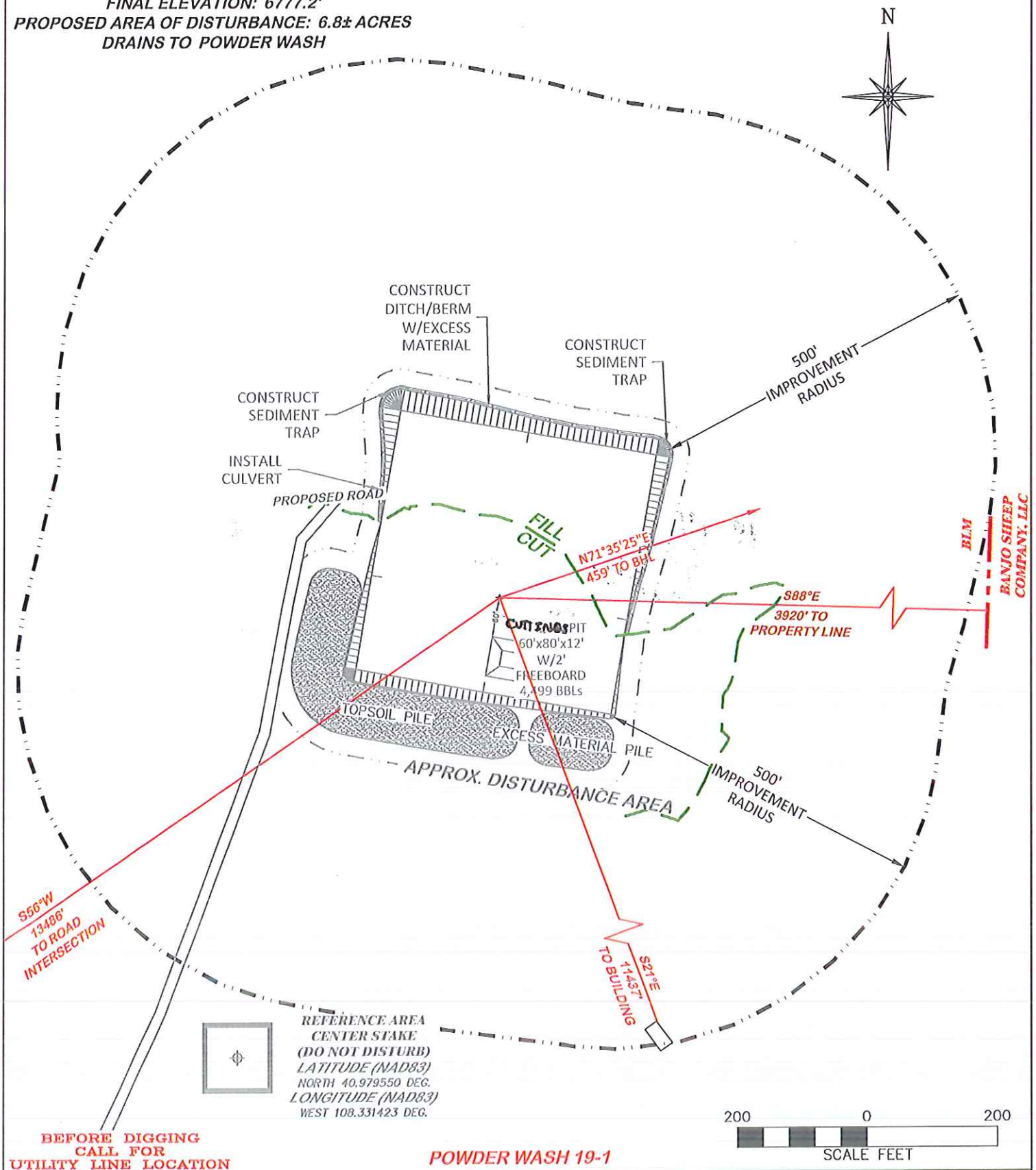


UNGRADED ELEVATION: 6781.3'  
 FINAL ELEVATION: 6777.2'  
 PROPOSED AREA OF DISTURBANCE: 6.8± ACRES  
 DRAINS TO POWDER WASH

# LOCATION DRAWING



LOCATION DRAWING		QEP ENERGY COMPANY POWDER WASH 19-1 SESE, SECTION 19, T. 12 N., R. 97 W., 6th P.M., MOFFAT COUNTY, COLORADO	
<b>DRG</b> RIFFIN & ASSOCIATES, INC. (307) 362-5028 1414 ELK ST., ROCK SPRINGS, WY 82901			
DRAWN: 10/30/2015 - TCM	SCALE: 1" = 200'		
REVISED: 5/9/2016 - TCM	DRG JOB No. 20958		
ONSITE REVISIONS	EXHIBIT 2D		

## QEP ENERGY COMPANY

POWDER WASH 19-1

SESE, SECTION 19, T12N, R97W, 6th PM

DATE: 12/2/2015

[illegible][illegible]