

DRG RIFFIN & ASSOCIATES, INC. (307) 362-5028 1414 ELK ST., ROCK SPRINGS, WY 82901		REFERENCE AREA MAP	
DRAWN: 10/30/2015 - TCM	SCALE: 1" = 500'	QEP ENERGY COMPANY POWDER WASH 19-1 SESE, SECTION 19, T. 12 N., R. 97 W., 6th P.M., MOFFAT COUNTY, COLORADO	
REVISED: N/A -	DRG JOB No. 20958		
	EXHIBIT 4B		

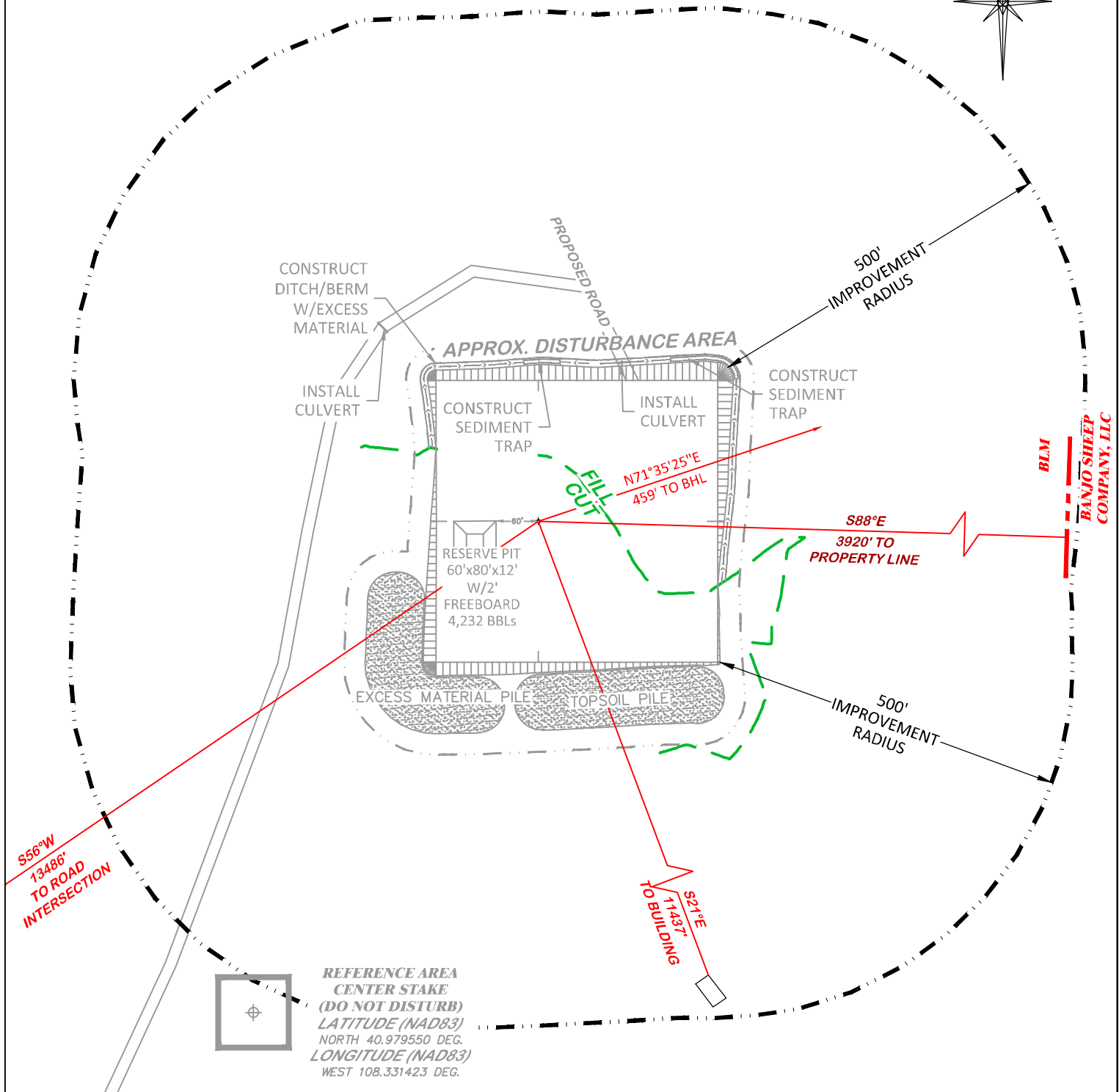
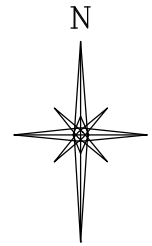
UNGRADED ELEVATION: 6781.3'

FINAL ELEVATION: 6778.4'

PROPOSED AREA OF DISTURBANCE: 6.8± ACRES

DRAINS TO POWDER WASH

LOCATION DRAWING



BEFORE DIGGING
CALL FOR
UTILITY LINE LOCATION

POWDER WASH 19-1



RIFFIN & ASSOCIATES, INC.

(307) 362-5028

1414 ELK ST., ROCK SPRINGS, WY 82901

DRAWN: 10/30/2015 - TCM

SCALE: 1" = 200'

REVISED: 12/2/2015 - TCM

DRG JOB No. 20958

MOVED SHL & PIT

EXHIBIT 2D

LOCATION DRAWING

QEP ENERGY COMPANY

POWDER WASH 19-1

SESE, SECTION 19, T. 12 N., R. 97 W., 6th P.M.,
MOFFAT COUNTY, COLORADO