

LEGEND

- FOUND GLO BRASS CAP ON STEEL POST
- ⊙ FOUND MONUMENT SET BY OTHERS AS NOTED
- ⊠ FOUND ORIGINAL STONE
- WELL HEAD
- (M) MEASURED IN FIELD
- (CALC) CALCULATED LINE
- L 90° SYMBOL
- WC WITNESS CORNER
- E— ELECTRIC POWER LINE

BASIS OF BEARING:

THE LINE FROM THE E1/4 CORNER TO THE NE CORNER OF SECTION 19, TOWNSHIP 11 SOUTH, RANGE 89 WEST, 6TH P.M., WAS ASSUMED TO BEAR N00°07'30"W AS MONUMENTED AND SHOWN HEREON.

CERTIFICATE OF SURVEY:

I, DAVID G. NICEWICZ, A REGISTERED PROFESSIONAL LAND SURVEYOR IN THE STATE OF COLORADO, DO HEREBY CERTIFY THAT THE SURVEY REPRESENTED BY THIS PLAT WAS MADE UNDER MY DIRECTION AND SUPERVISION, AND THAT THIS PLAT ACCURATELY REPRESENTS THIS SURVEY.

DAVID G. NICEWICZ, P.L.S. NO. 24963

GAS WELL LOCATION

FED 11-90-09 #3

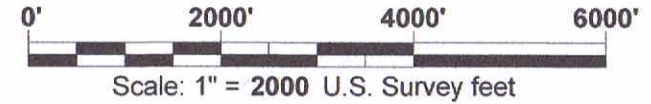
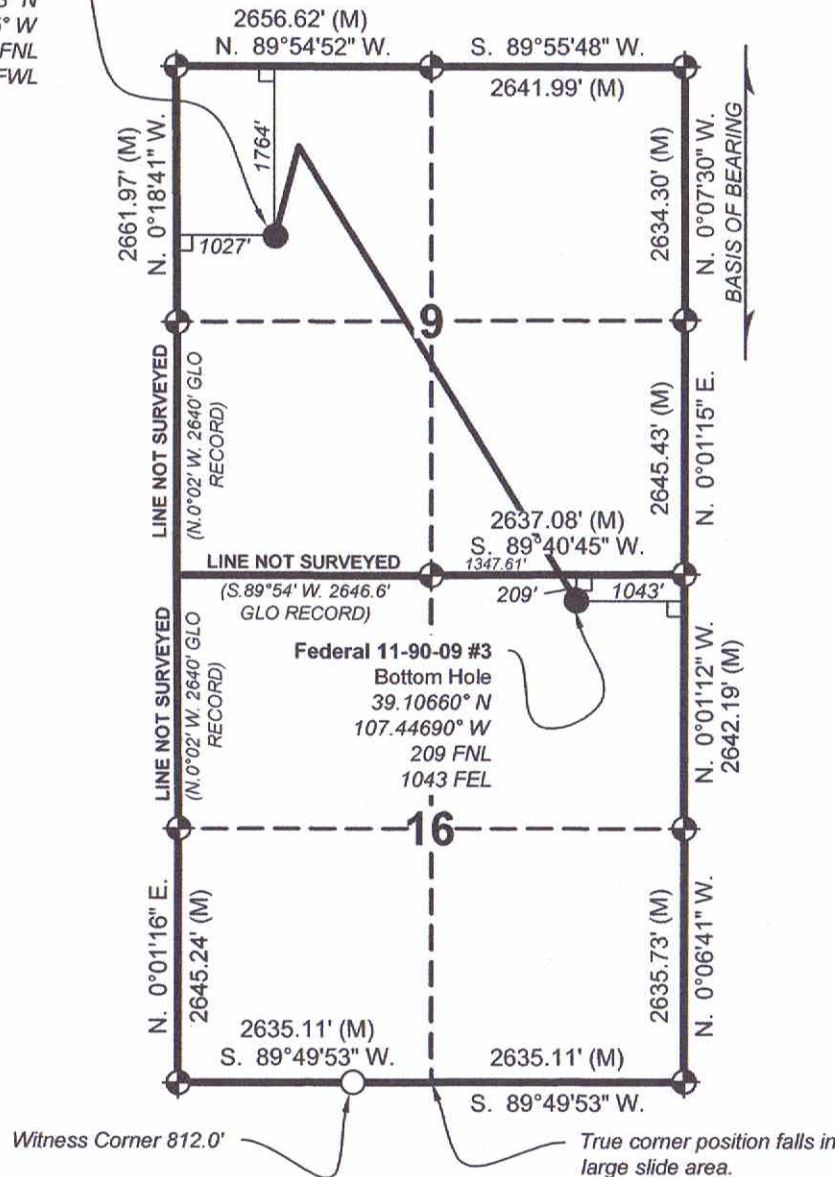
LOCATED IN S. 9, T. 11 S., R. 90 W., 6th P.M.

GUNNISON COUNTY, COLORADO

E. SCHAAF AND ASSOC., INC. OF DELTA, COLORADO, has in accordance with a request from ERIC SANFORD, for SG INTERESTS I, LTD, determined the location of FED 11-90-09 #3 to be 1764' FNL & 1027' FWL Section 9, Township 11 South, Range 90 West, of the Sixth Principal Meridian, Gunnison County, Colorado.

SURVEYED BY	DATE	E. SCHAAF AND ASSOC., INC.	
DGN	11/30/11	340 PALMER ST., DELTA, CO. 81416	
DRAWN BY	SCALE	ACCT. NO.	
DGN	1"=1000'	WE11155SG	SG INT, 2011

Federal 11-90-09 #3
Surface Location
39.11683° N
107.45825° W
1764 FNL
1027 FWL



LEGEND

- ◆ ~ FOUND ORIGINAL STONE
- ~ FOUND GLO BRASS CAP ON STEEL POST
- ⊕ ~ FOUND REBAR AND CAP BY LS15710
- ~ FOUND No.6 REBAR WITH A 2 1/2" ALUMINUM CAP, LS24963
- ~ WELL FEATURE
- (M) ~ MEASURED IN FIELD
- L ~ 90° SYMBOL
- WC ~ WITNESS CORNER

BASIS OF BEARING:

THE LINE FROM THE E 1/4 CORNER TO THE NE CORNER OF SECTION 9, TOWNSHIP 11 SOUTH, RANGE 90 WEST, 6TH P.M., WAS ASSUMED TO BEAR N. 0°07'30" W. AS MONUMENTED AND SHOWN HEREON.

CERTIFICATE OF SURVEY:

I, David G. Nicewicz, a Registered Land Surveyor in the State of Colorado, do hereby certify that the survey represented by this plat was made under my direction and supervision, and that this plat accurately represents this survey.

David G. Nicewicz P.L.S. No. 24963
(for and on behalf of AECOM)



GAS WELL LOCATION PLAT

FEDERAL 11-90-09 #3 BOTTOM HOLE

Located in the NE 1/4 of Section 16,
Township 11 South, Range 90 West, 6th P.M.,
Gunnison County, Colorado

SURVEYED BY: DGN	DWG DATE: 03/12/15	David G. Nicewicz, PLS	
DRAFTED BY: MLD	SCALE: 1" = 2000'	cell: (720) 456-1104 david.nicewicz@us.com	AECOM 804 Colorado Ave, Suite 201 Glenwood Springs Co 81610
JOB NO.: 22244264.50700		SHEET NO. 1 of 1	

AECOM OF GLENWOOD SPRINGS COLORADO, has in accordance with a request from ERIC SANFORD, for SG INTERESTS I, LTD, determined the location of FEDERAL 11-90-09 #3 BOTTOM HOLE to be 209 FNL & 1043 FEL in Section 16, Township 11 South, Range 90 West, of the Sixth Principal Meridian, Gunnison County, Colorado.