

# T1N, R67W

NW. COR.  
SEC. 11, T1N, R67W  
FOUND 2" ALUM. CAP  
L.S. NO. 25937

S 89°49'51" W 2600.96' (M)

S 89°35'05" W 2628.10' (M)

NE. COR.  
SEC. 11, T1N, R67W  
FOUND 2 1/2" ALUM. CAP  
L.S. NO. 11372

N. 1/4 COR.  
SEC. 11, T1N, R67W  
FOUND 2 1/2" ALUM. CAP  
L.S. NO. 25937

LEINWEBER FED 30N-8HZ  
SURFACE LOCATION

N. 1/16 COR.  
SEC. 11 & SEC. 12  
T1N, R67W  
FOUND 2 1/2" ALUM. CAP  
L.S. NO. 36073

CENTER 1/4 COR.  
SEC. 11, T1N, R67W  
FOUND 2 1/2" ALUM. CAP  
L.S. NO. 25937

11

SURFACE LOCATION: NAD 83  
GROUND ELEVATION= 4956.7'  
LATITUDE= 40.071502°  
LONGITUDE= -104.850046°  
LATITUDE= 40°04'17.406"  
LONGITUDE= -104°51'00.166"  
HEEL LOCATION: NAD 83  
LATITUDE= 40.071220°  
LONGITUDE= -104.847384°  
LATITUDE= 40°04'16.393"  
LONGITUDE= -104°50'50.581"  
BOTTOM HOLE LOCATION: NAD 83  
LATITUDE= 40.071110°  
LONGITUDE= -104.809601°  
LATITUDE= 40°04'15.996"  
LONGITUDE= -104°48'34.564"

W. 1/4 COR.  
SEC. 11, T1N, R67W  
FOUND 2" ALUM. CAP  
ILLEGIBLE

E. 1/4 COR.  
SEC. 11, T1N, R67W  
FOUND 2 1/2" ALUM. CAP  
L.S. NO. 11372

SW. COR.  
SEC. 11, T1N, R67W  
FOUND 2" ALUM. CAP  
ILLEGIBLE

S. 1/4 COR.  
SEC. 11, T1N, R67W  
FOUND 2 1/2" ALUM. CAP  
L.S. NO. 25937

SE. COR.  
SEC. 11, T1N, R67W  
FOUND 2 1/2" ALUM. CAP  
L.S. NO. 11372

25'12" 7°55'

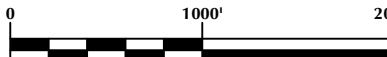
## CERTIFICATE OF SURVEYOR:

THIS IS TO CERTIFY THAT THE ABOVE PLAT WAS PREPARED FROM FIELD NOTES OF ACTUAL SURVEY MADE BY ME OR UNDER MY SUPERVISION AND THAT THE SAME ARE TRUE AND CORRECT TO THE BEST OF MY KNOWLEDGE AND BELIEF. THIS CERTIFICATE DOES NOT REPRESENT A LAND SURVEY PLAT OR IMPROVEMENT SURVEY PLAT AS DEFINED BY C.R.S. 38-51-102 AND CANNOT BE RELIED UPON TO DETERMINE OWNERSHIP.

*Randall K. French*  
RANDALL K. FRENCH  
PROFESSIONAL LAND SURVEYOR  
COLORADO REGISTRATION NUMBER 18512

NOTE:  
ACCORDING TO COLORADO STATE LAW YOU MUST COMMENCE ANY LEGAL ACTION BASED UPON ANY DEFECT IN THIS SURVEY WITHIN THREE YEARS AFTER YOU FIRST DISCOVER SUCH DEFECT. IN NO EVENT MAY ANY ACTION BASED UPON ANY DEFECT IN THIS SURVEY BE COMMENCED MORE THAN TEN YEARS FROM THE DATE ON THE CERTIFICATION SHOWN HEREON.

NOTE:  
MAGNETIC NORTH IS CURRENT AS OF 5/13/2016.  
MAGNETIC NORTH CHANGES WEST 0°06' PER YEAR.



SCALE: 1" = 1000'

## NOTES:

- ▲ INDICATES SECTION CORNER
- INDICATES CALCULATED CORNER
- ELEVATION BASED ON NAVD88 (GEOID12B)
- BASIS OF BEARING DERIVED FROM COLORADO COORDINATE SYSTEM 1983 NORTH ZONE.
- ALL MEASURED DISTANCES ARE GRID.  
COMBINED SCALE FACTOR: .99972422 CALCULATED FROM THE NW. CORNER OF SECTION 11, T1N, R67W
- OPERATOR: ROB WILSON / PDOP = 1.3
- SEE ADDENDUM TO WELL LOCATION CERTIFICATE FOR EXISTING IMPROVEMENTS WITHIN 500' OF THE WELL PAD.
- WELL FOOTAGES ARE MEASURED AT RIGHT ANGLES TO THE SECTION LINES.
- THE BOTTOM OF HOLE BEARS N89°47'02"E, 10574' FROM THE HEEL LOCATION.

## WELL PAD - LEINWEBER FED 31N-8HZ

LEINWEBER FED 30N-8HZ  
WELL LOCATION CERTIFICATE  
458' FNL & 380' FEL NENE (SURFACE)  
LOCATED IN SECTION 11  
559' FNL & 364' FWL NWNW (HEEL)  
LOCATED IN SECTION 12  
T1N, R67W, 6TH P.M.  
678' FNL & 249' FWL NWNW (BOTTOM)  
LOCATED IN SECTION 8  
T1N, R66W, 6TH P.M.  
WELD COUNTY, COLORADO

Kerr-McGee Oil &  
Gas Onshore L.P.

1099 18th Street  
Denver, Colorado 80202



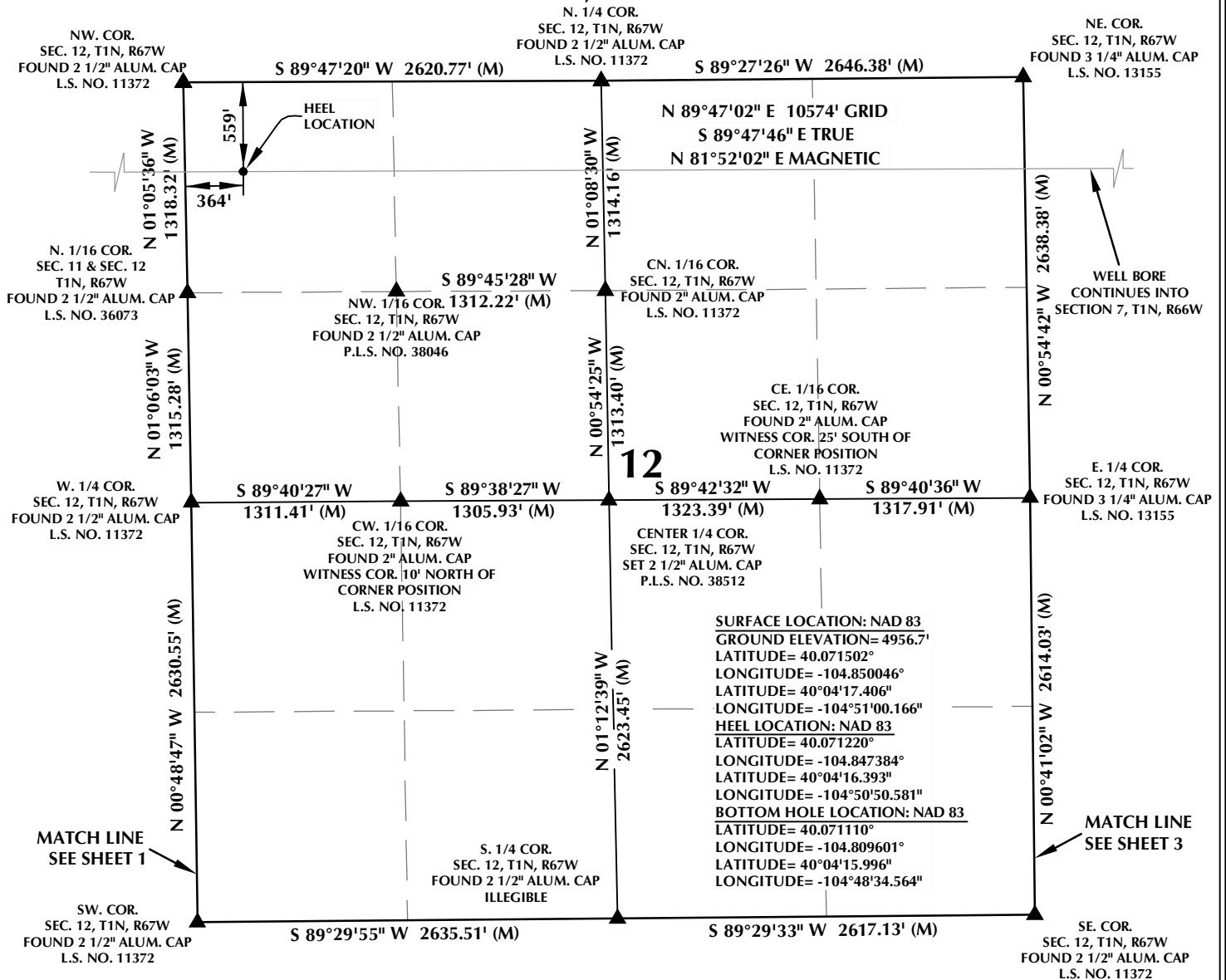
## CONSULTING, LLC

SHERIDAN OFFICE  
1095 Saberton Avenue  
Sheridan, Wyoming 82801  
Phone 307-674-0609

LOVELAND OFFICE  
1635 Foxtrail Drive, Suite 204  
Loveland, Colorado 80538  
Phone 970-776-4331

DRAFTED BY:	LMO	CHECKED BY:	RKF	SHEET NO:
DATE DRAFTED:	6/27/16	DATE SURVEYED:	4/25/16	1
REVISED:		FILE NAME:	16-33	1 OF 4

# T1N, R67W



## CERTIFICATE OF SURVEYOR:

THIS IS TO CERTIFY THAT THE ABOVE PLAT WAS PREPARED FROM FIELD NOTES OF ACTUAL SURVEY MADE BY ME OR UNDER MY SUPERVISION AND THAT THE SAME ARE TRUE AND CORRECT TO THE BEST OF MY KNOWLEDGE AND BELIEF. THIS CERTIFICATE DOES NOT REPRESENT A LAND SURVEY PLAT OR IMPROVEMENT SURVEY PLAT AS DEFINED BY C.R.S. 38-51-102 AND CANNOT BE RELIED UPON TO DETERMINE OWNERSHIP.

*Randall K. French*  
**RANDALL K. FRENCH**  
 PROFESSIONAL LAND SURVEYOR  
 COLORADO REGISTRATION NUMBER 38512

**NOTICE:**  
 ACCORDING TO COLORADO STATE LAW YOU MUST COMMENCE ANY LEGAL ACTION BASED UPON ANY DEFECT IN THIS SURVEY WITHIN THREE YEARS AFTER YOU FIRST DISCOVER SUCH DEFECT. IN NO EVENT MAY ANY ACTION BASED UPON ANY DEFECT IN THIS SURVEY BE COMMENCED MORE THAN TEN YEARS FROM THE DATE ON THE CERTIFICATION SHOWN HEREON.

**NOTE:**  
 MAGNETIC NORTH IS CURRENT AS OF 5/13/2016.  
 MAGNETIC NORTH CHANGES WEST 0°06' PER YEAR.



SCALE: 1" = 1000'

## NOTES:

- ▲ INDICATES SECTION CORNER
- INDICATES CALCULATED CORNER
- ELEVATION BASED ON NAVD88 (GEOID12B)
- BASIS OF BEARING DERIVED FROM COLORADO COORDINATE SYSTEM 1983 NORTH ZONE.
- ALL MEASURED DISTANCES ARE GRID. COMBINED SCALE FACTOR: .99972422 CALCULATED FROM THE NW CORNER OF SECTION 11, T1N, R67W
- OPERATOR: ROB WILSON / PDOP = 1.3
- SEE ADDENDUM TO WELL LOCATION CERTIFICATE FOR EXISTING IMPROVEMENTS WITHIN 500' OF THE WELL PAD.
- WELL FOOTAGES ARE MEASURED AT RIGHT ANGLES TO THE SECTION LINES.
- THE BOTTOM OF HOLE BEARS N89°47'02"E, 10574' FROM THE HEEL LOCATION.

## WELL PAD - LEINWEBER FED 31N-8HZ

LEINWEBER FED 30N-8HZ  
 WELL LOCATION CERTIFICATE  
 458' FNL & 380' FEL NENE (SURFACE)  
 LOCATED IN SECTION 11  
 559' FNL & 364' FWL NWNW (HEEL)  
 LOCATED IN SECTION 12  
 T1N, R67W, 6TH P.M.  
 678' FNL & 249' FWL NWNW (BOTTOM)  
 LOCATED IN SECTION 8  
 T1N, R66W, 6TH P.M.  
 WELD COUNTY, COLORADO

**Kerr-McGee Oil &  
 Gas Onshore L.P.**  
 1099 18th Street  
 Denver, Colorado 80202



## CONSULTING, LLC

**SHERIDAN OFFICE**  
 1095 Saberton Avenue  
 Sheridan, Wyoming 82801  
 Phone 307-674-0609

**LOVELAND OFFICE**  
 1635 Foxtrail Drive, Suite 204  
 Loveland, Colorado 80538  
 Phone 970-776-4331

DRAFTED BY:	LMO	CHECKED BY:	RKF	SHEET NO:
DATE DRAFTED:	6/27/16	DATE SURVEYED:	4/25/16	2
REVISED:		FILE NAME:	16-33	2 OF 4

# T1N, R66W

E. 1/16 COR.  
SEC. 6 & SEC. 7, T1N, R66W  
FOUND 2" ALUM. CAP  
L.S. NO. 25937

NW. COR.  
SEC. 7, T1N, R66W  
FOUND 3 1/4" ALUM. CAP  
L.S. NO. 13155

S 87°42'42" W 2789.45' (M)

S 89°45'52" W  
1318.81' (M)

S 89°41'56" W  
1320.11' (M)

NE. COR.  
SEC. 7, T1N, R66W  
FOUND 2" ALUM. CAP  
L.S. NO. 30830

N 89°47'02" E 10574' GRID  
S 89°47'46" E TRUE  
N 81°52'02" E MAGNETIC

N. 1/4 COR.  
SEC. 7, T1N, R66W  
SET 2 1/2" ALUM. CAP  
P.L.S. NO. 38512

N 00°54'42" W 2638.38' (M)

N 00°42'53" W  
2687.95' (M)

N 00°33'37" W 2639.50' (M)

WELL BORE  
CONTINUES INTO  
SECTION 8

CENTER 1/4 COR.  
SEC. 7, T1N, R66W  
FOUND 2" ALUM. CAP  
L.S. NO. 25937

S 88°43'42" W  
2779.47' (M)

S 88°40'40" W  
2631.87' (M)

W. 1/4 COR.  
SEC. 7, T1N, R66W  
FOUND 3 1/4" ALUM. CAP  
L.S. NO. 13155

E. 1/4 COR.  
SEC. 7, T1N, R66W  
FOUND 2 1/2" ALUM. CAP  
L.S. NO. 30830

SURFACE LOCATION: NAD 83  
GROUND ELEVATION= 4956.7'  
LATITUDE= 40.071502°  
LONGITUDE= -104.850046°  
LATITUDE= 40°04'17.406"  
LONGITUDE= -104°51'00.166"  
HEEL LOCATION: NAD 83  
LATITUDE= 40.071220°  
LONGITUDE= -104.847384°  
LATITUDE= 40°04'16.393"  
LONGITUDE= -104°50'50.581"  
BOTTOM HOLE LOCATION: NAD 83  
LATITUDE= 40.071110°  
LONGITUDE= -104.809601°  
LATITUDE= 40°04'15.996"  
LONGITUDE= -104°48'34.564"

MATCH LINE  
SEE SHEET 2

MATCH LINE  
SEE SHEET 4

SW. COR.  
SEC. 7, T1N, R66W  
FOUND 2 1/2" ALUM. CAP  
L.S. NO. 11372

S 88°52'40" W 2771.39' (M)

S 89°04'50" W  
1317.00' (M)

S 89°04'10" W  
1317.17' (M)

SE. COR.  
SEC. 7, T1N, R66W  
FOUND 3 1/4" ALUM. CAP  
L.S. NO. 25942

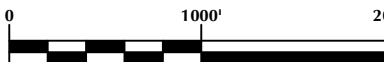
S. 1/4 COR.  
SEC. 7, T1N, R66W  
FOUND 2" ALUM. CAP  
L.S. NO. 25937

E. 1/16 COR.  
SEC. 7 & SEC. 18, T1N, R66W  
FOUND 2" ALUM. CAP  
L.S. NO. 25937

25'12" 7°55'



NOTE:  
MAGNETIC NORTH IS CURRENT AS OF 5/13/2016.  
MAGNETIC NORTH CHANGES WEST 0°06' PER YEAR.



SCALE: 1" = 1000'

## CERTIFICATE OF SURVEYOR:

THIS IS TO CERTIFY THAT THE ABOVE PLAT WAS PREPARED FROM FIELD NOTES OF ACTUAL SURVEY MADE BY ME OR UNDER MY SUPERVISION AND THAT THE SAME ARE TRUE AND CORRECT TO THE BEST OF MY KNOWLEDGE AND BELIEF. THIS CERTIFICATE DOES NOT REPRESENT A LAND SURVEY PLAT OR IMPROVEMENT SURVEY PLAT AS DEFINED BY C.R.S. 38-51-102 AND CANNOT BE RELIED UPON TO DETERMINE OWNERSHIP.

*Randall K. French*  
PROFESSIONAL LAND SURVEYOR  
COLORADO REGISTRATION NUMBER 38512  
6/27/16

NOTE:  
ACCORDING TO COLORADO STATE LAW YOU MUST COMMENCE ANY LEGAL ACTION BASED UPON ANY DEFECT IN THIS SURVEY WITHIN THREE YEARS AFTER YOU FIRST DISCOVER SUCH DEFECT. IN NO EVENT MAY ANY ACTION BASED UPON ANY DEFECT IN THIS SURVEY BE COMMENCED MORE THAN TEN YEARS FROM THE DATE ON THE CERTIFICATION SHOWN HEREON.

## WELL PAD - LEINWEBER FED 31N-8HZ

LEINWEBER FED 30N-8HZ  
WELL LOCATION CERTIFICATE  
458' FNL & 380' FEL NENE (SURFACE)  
LOCATED IN SECTION 11  
559' FNL & 364' FWL NWNW (HEEL)  
LOCATED IN SECTION 12  
T1N, R67W, 6TH P.M.  
678' FNL & 249' FWL NWNW (BOTTOM)  
LOCATED IN SECTION 8  
T1N, R66W, 6TH P.M.  
WELD COUNTY, COLORADO

**Kerr-McGee Oil &  
Gas Onshore L.P.**  
1099 18th Street  
Denver, Colorado 80202



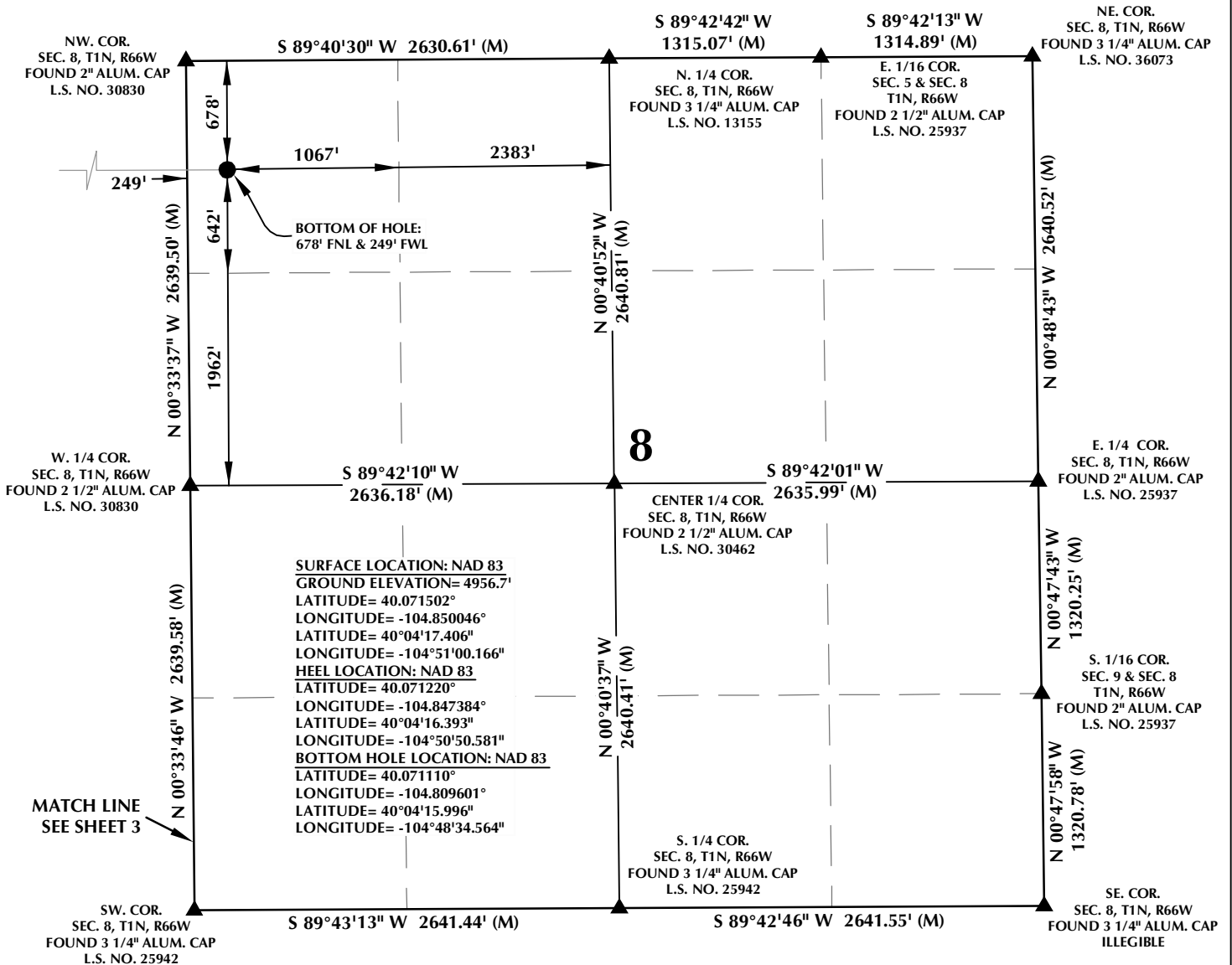
## CONSULTING, LLC

SHERIDAN OFFICE  
1095 Saberton Avenue  
Sheridan, Wyoming 82801  
Phone 307-674-0609

LOVELAND OFFICE  
1635 Foxtrail Drive, Suite 204  
Loveland, Colorado 80538  
Phone 970-776-4331

DRAFTED BY:	LMO	CHECKED BY:	RKF	SHEET NO:
DATE DRAFTED:	6/27/16	DATE SURVEYED:	4/25/16	3
REVISED:		FILE NAME:	16-33	3 OF 4

# T1N, R66W

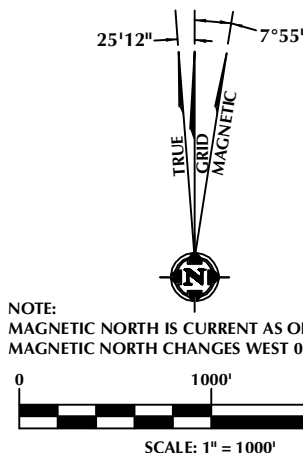


## CERTIFICATE OF SURVEYOR:

THIS IS TO CERTIFY THAT THE ABOVE PLAT WAS PREPARED FROM FIELD NOTES OF ACTUAL SURVEY MADE BY ME OR UNDER MY SUPERVISION AND THAT THE SAME ARE TRUE AND CORRECT TO THE BEST OF MY KNOWLEDGE AND BELIEF. THIS CERTIFICATE DOES NOT REPRESENT A LAND SURVEY PLAT OR IMPROVEMENT SURVEY PLAT AS DEFINED BY C.R.S. 38-51-102 AND CANNOT BE RELIED UPON TO DETERMINE OWNERSHIP.

*Randall K. French*  
RANDALL K. FRENCH  
PROFESSIONAL LAND SURVEYOR  
COLORADO REGISTRATION NUMBER 18512

**NOTE:**  
ACCORDING TO COLORADO STATE LAW YOU MUST COMMENCE ANY LEGAL ACTION BASED UPON ANY DEFECT IN THIS SURVEY WITHIN THREE YEARS AFTER YOU FIRST DISCOVER SUCH DEFECT. IN NO EVENT MAY ANY ACTION BASED UPON ANY DEFECT IN THIS SURVEY BE COMMENCED MORE THAN TEN YEARS FROM THE DATE ON THE CERTIFICATION SHOWN HEREON.



## NOTES:

- INDICATES SECTION CORNER
- INDICATES CALCULATED CORNER
- ELEVATION BASED ON NAVD88 (GEOID12B)
- BASIS OF BEARING DERIVED FROM COLORADO COORDINATE SYSTEM 1983 NORTH ZONE.
- ALL MEASURED DISTANCES ARE GRID. COMBINED SCALE FACTOR: .99972422 CALCULATED FROM THE NW. CORNER OF SECTION 11, T1N, R67W
- OPERATOR: ROB WILSON / PDOP = 1.3
- SEE ADDENDUM TO WELL LOCATION CERTIFICATE FOR EXISTING IMPROVEMENTS WITHIN 500' OF THE WELL PAD.
- WELL FOOTAGES ARE MEASURED AT RIGHT ANGLES TO THE SECTION LINES.
- THE BOTTOM OF HOLE BEARS N89°47'02"E, 10574' FROM THE HEEL LOCATION.

## WELL PAD - LEINWEBER FED 31N-8HZ

LEINWEBER FED 30N-8HZ  
WELL LOCATION CERTIFICATE  
458' FNL & 380' FEL NENE (SURFACE)  
LOCATED IN SECTION 11  
559' FNL & 364' FWL NWNW (HEEL)  
LOCATED IN SECTION 12  
T1N, R67W, 6TH P.M.  
678' FNL & 249' FWL NWNW (BOTTOM)  
LOCATED IN SECTION 8  
T1N, R66W, 6TH P.M.  
WELD COUNTY, COLORADO

**Kerr-McGee Oil &  
Gas Onshore L.P.**  
1099 18th Street  
Denver, Colorado 80202



## CONSULTING, LLC

**SHERIDAN OFFICE**  
1095 Saberton Avenue  
Sheridan, Wyoming 82801  
Phone 307-674-0609

**LOVELAND OFFICE**  
1635 Foxtrail Drive, Suite 204  
Loveland, Colorado 80538  
Phone 970-776-4331

DRAFTED BY:	LMO	CHECKED BY:	RKF	SHEET NO:
DATE DRAFTED:	6/27/16	DATE SURVEYED:	4/25/16	4
REVISED:		FILE NAME:	16-33	4 OF 4