

Radial Cement Bond Gamma Ray Casing Collar Log			
see Oil & Gas Onshore, L.P.			
-24A			
g			
State		Colorado	
API # : 05-123-20737		Other Services	
None		None	
1N	RGE 67W	Elevation	
Ground Level	Elevation	4932'	
1N Bushing	12 FT	K.B. 4944'	
1N Bushing		D.F. 4943'	
		G.L. 4932'	
Tubing Record			
Size	Weight	From	To
Grade	Top	Bottom	
J-55	Surface	892 FT	
I-80	Surface	8201 FT	

All interpretations are opinions based on inferences from electrical or other measurements and we cannot and do not guarantee the accuracy or correctness of any interpretation, and we shall not, except in the case of gross or willful negligence on our part, be liable or responsible for any loss, costs, damages, or expenses incurred or sustained by anyone resulting from any interpretation made by any of our officers, agents or employees. These interpretations are also subject to our general terms and conditions set out in our current Price Schedule.

Comments

Log ran as per customer request
Depth referenced to Kelly Bushing at 12 FT
Log ran from 2000 FT to surface
Log ran with -0- PSI surface induced pressure
Logging tools were clean and free of any debris upon completion of operations

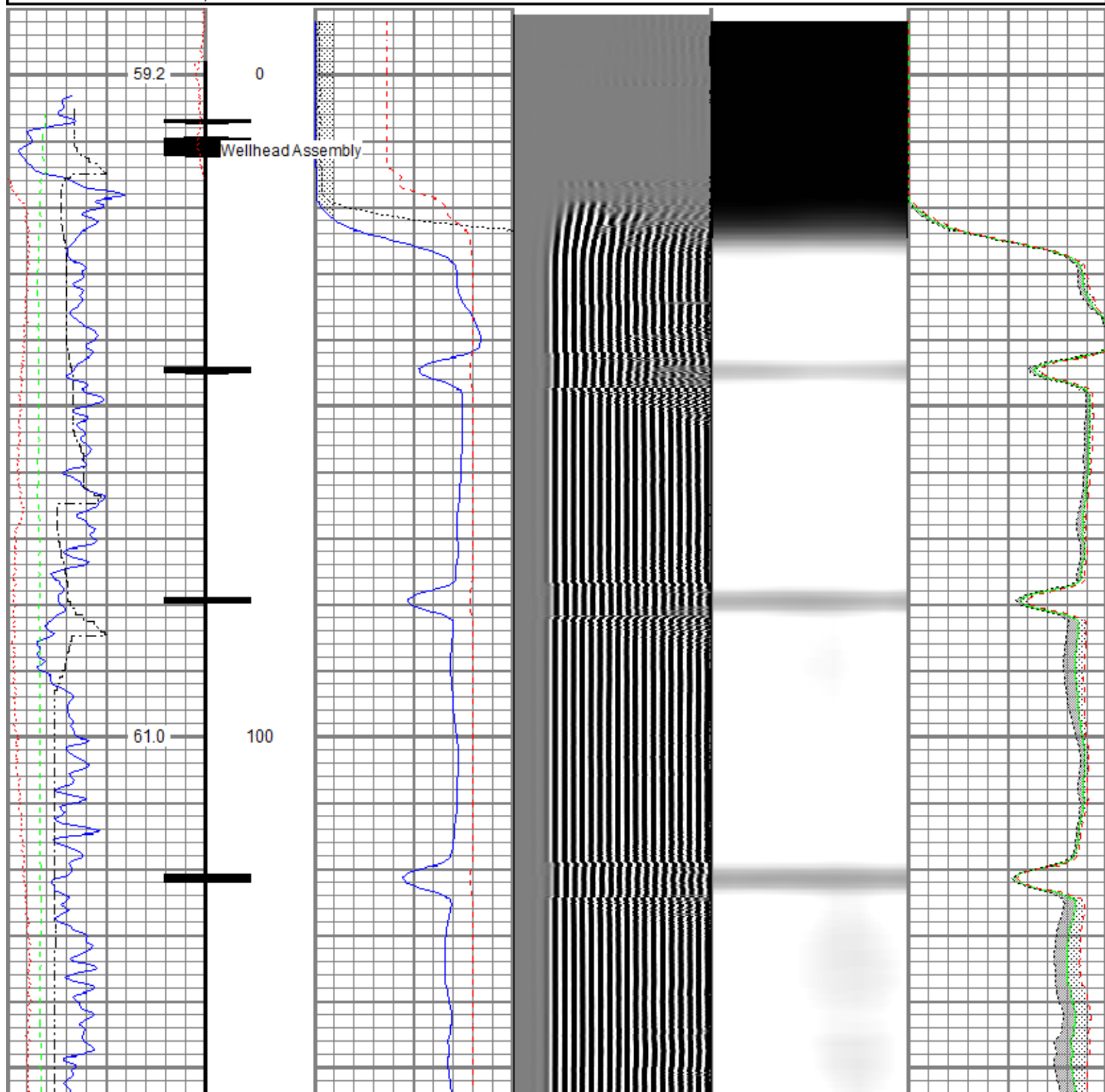
Thank you for choosing Reliance Oilfield Services, LLC!!

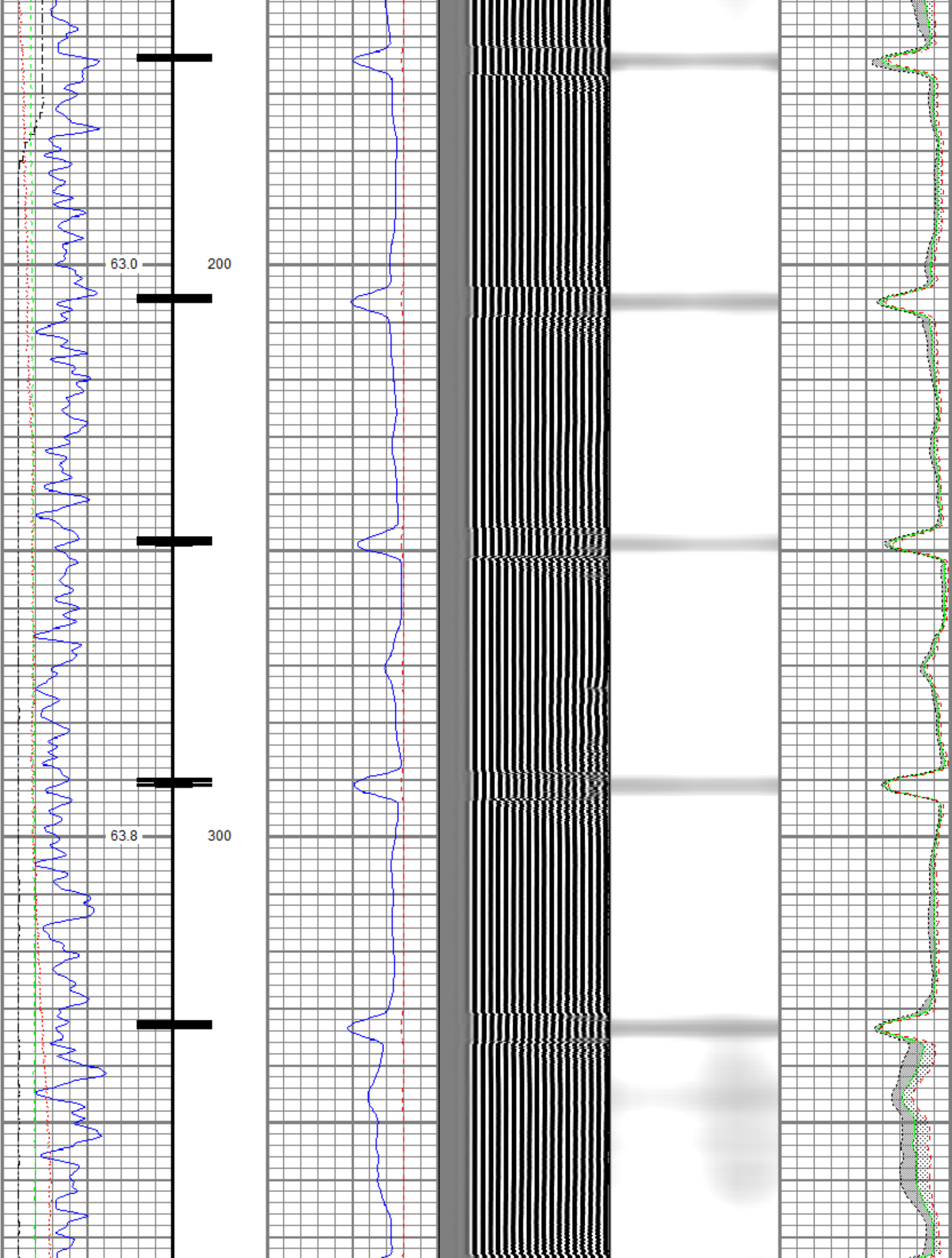


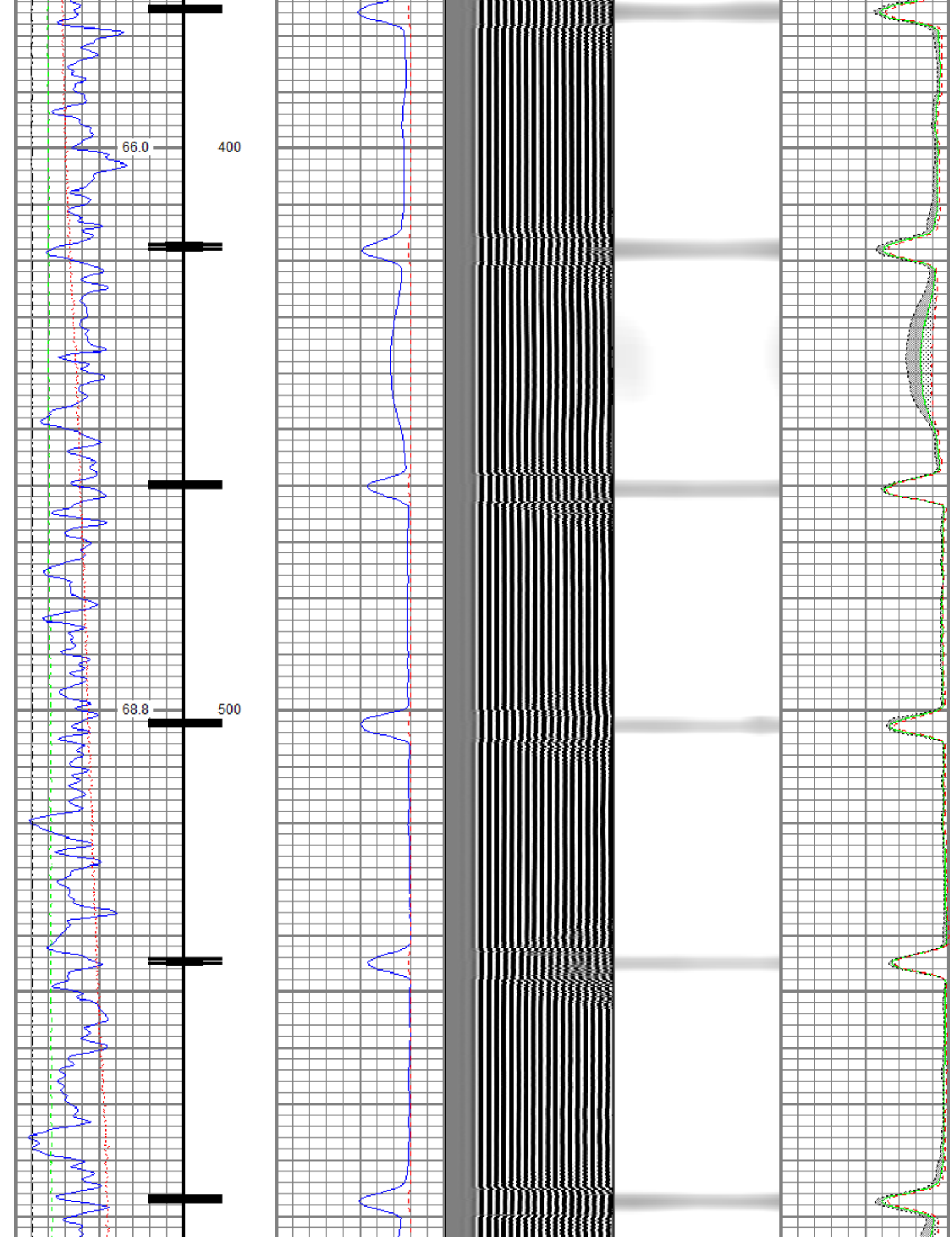
Recoated With No Surface-Induced Damage

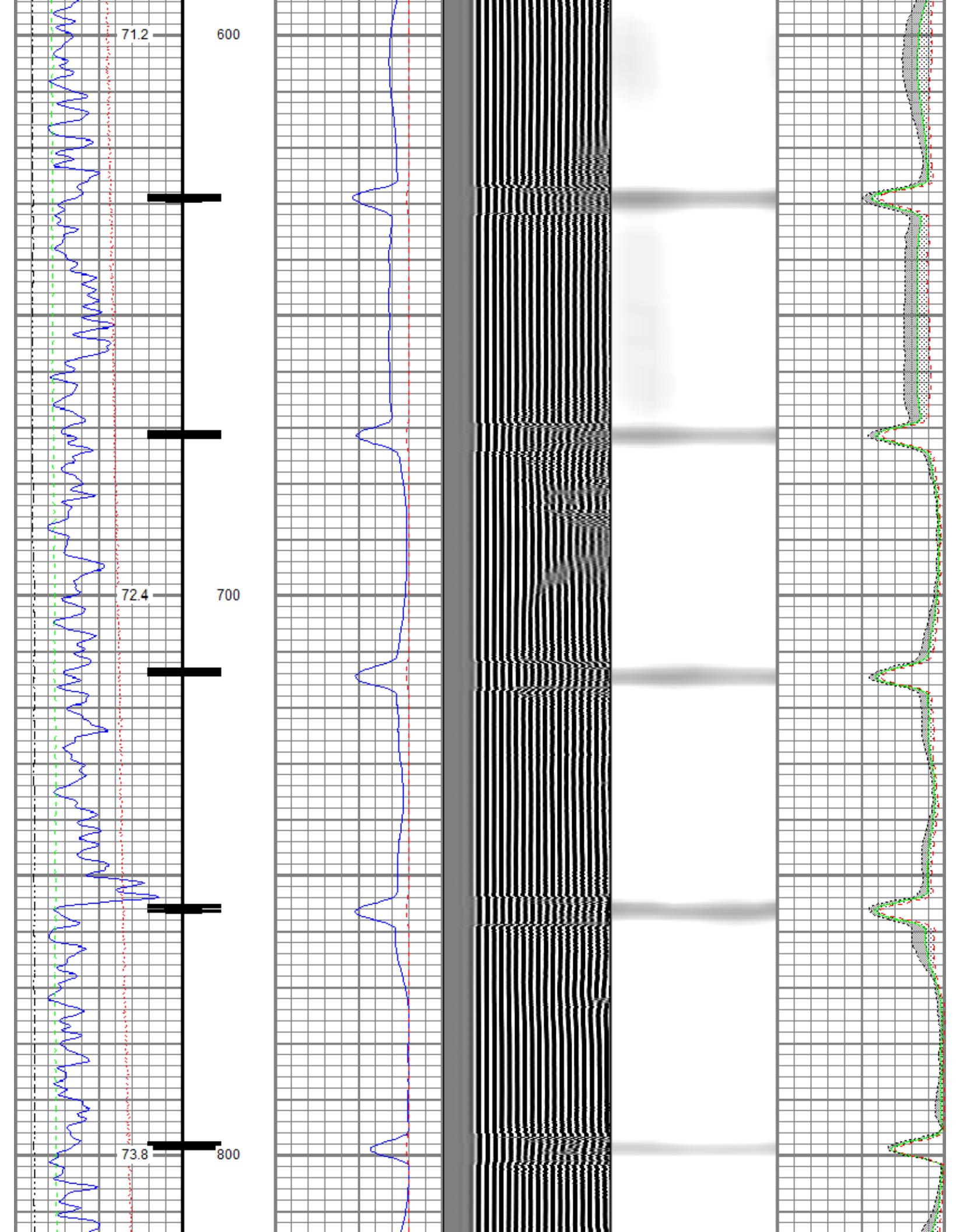
Database File anadarko_stieber__12-24a-rcbl_11-oct-2016_w8.db
 Dataset Pathname main.2
 Presentation Format ros_radri
 Dataset Creation Tue Oct 11 08:04:58 2016
 Charted by Depth in Feet scaled 1:240

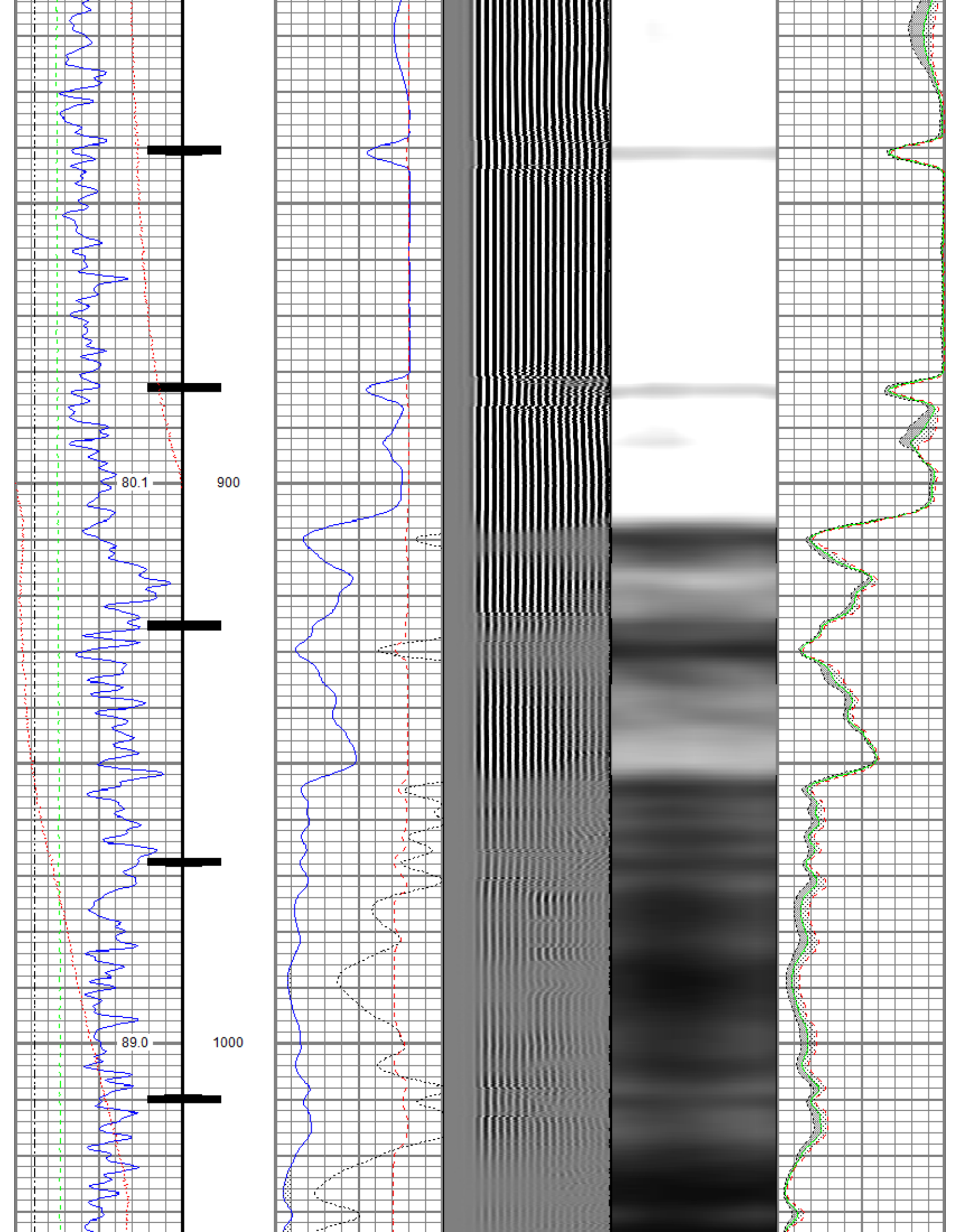
Gamma Ray	0	3' Amplitude (mV) 100	5' Variable Density Log	Sector Map	0	Average Amplitude 100
(GAPI) 120		3' Amplitude x 5	200			Minimum Amplitude
Casing Collar Locator	0	(mV) 20			0	100
Temperature (degF) 20		3' Travel Time				Maximum Amplitude
Line Speed	650	(usec) 150			0	100
-150 (ft/min) 150						
Line Tension (lb) 2000						

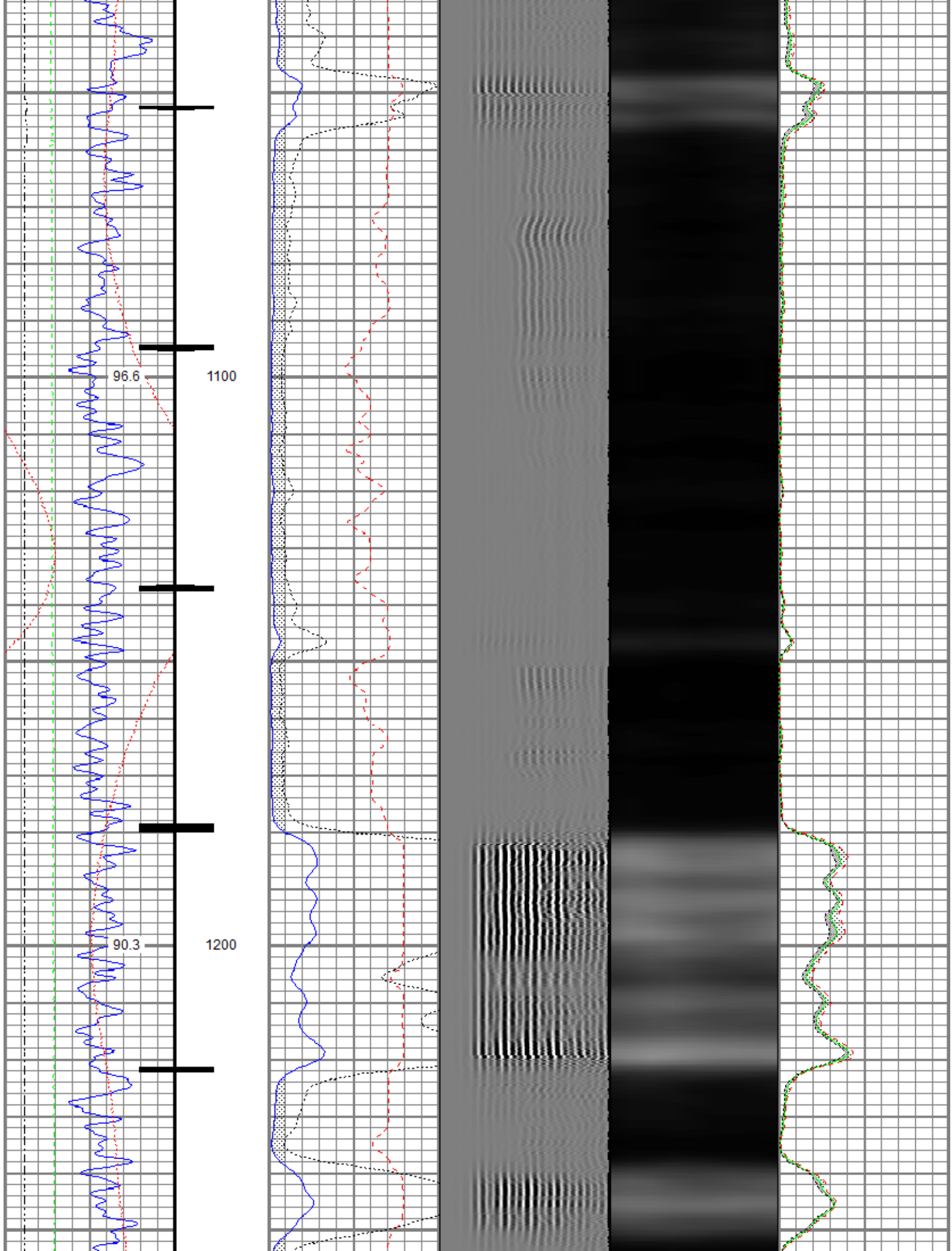


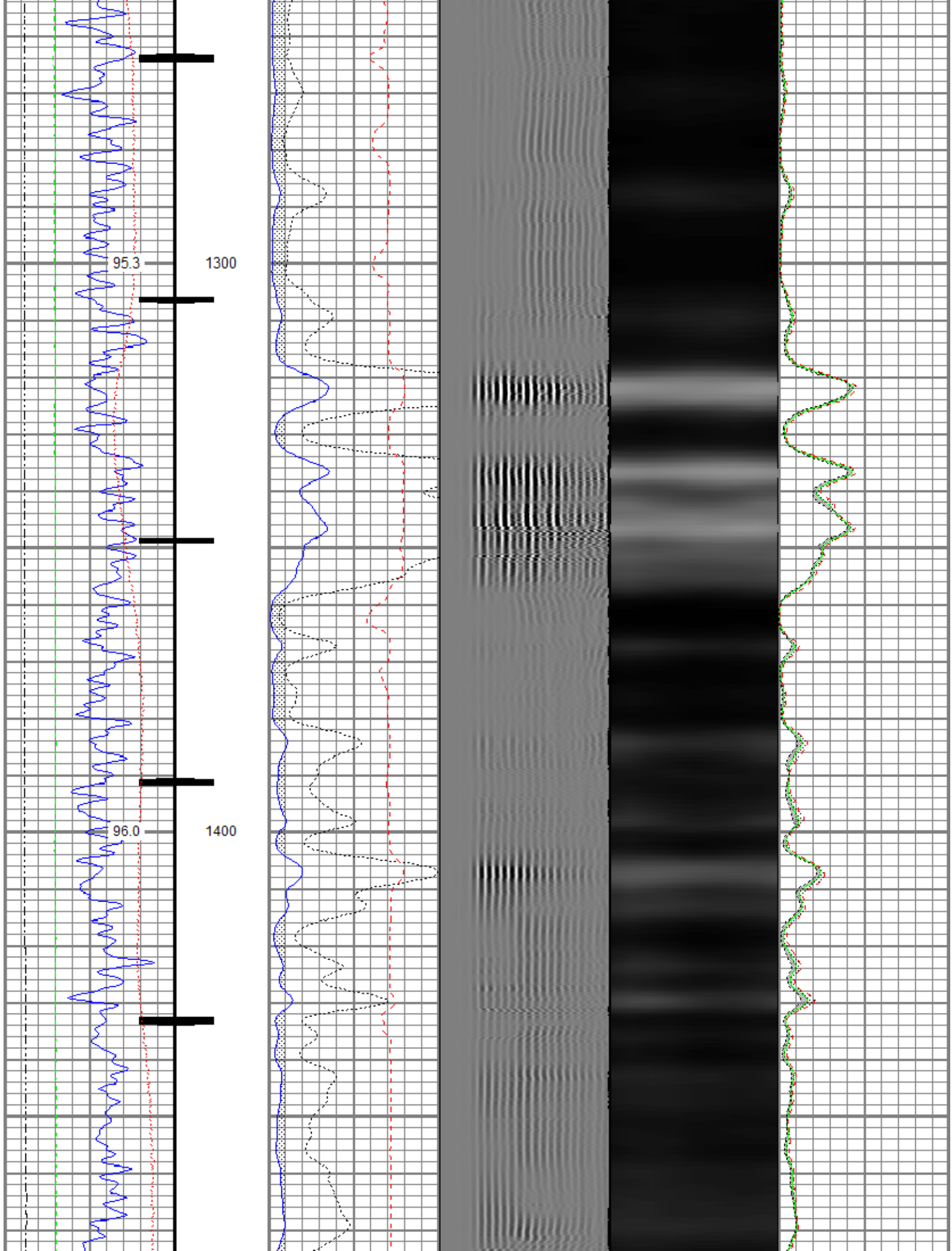


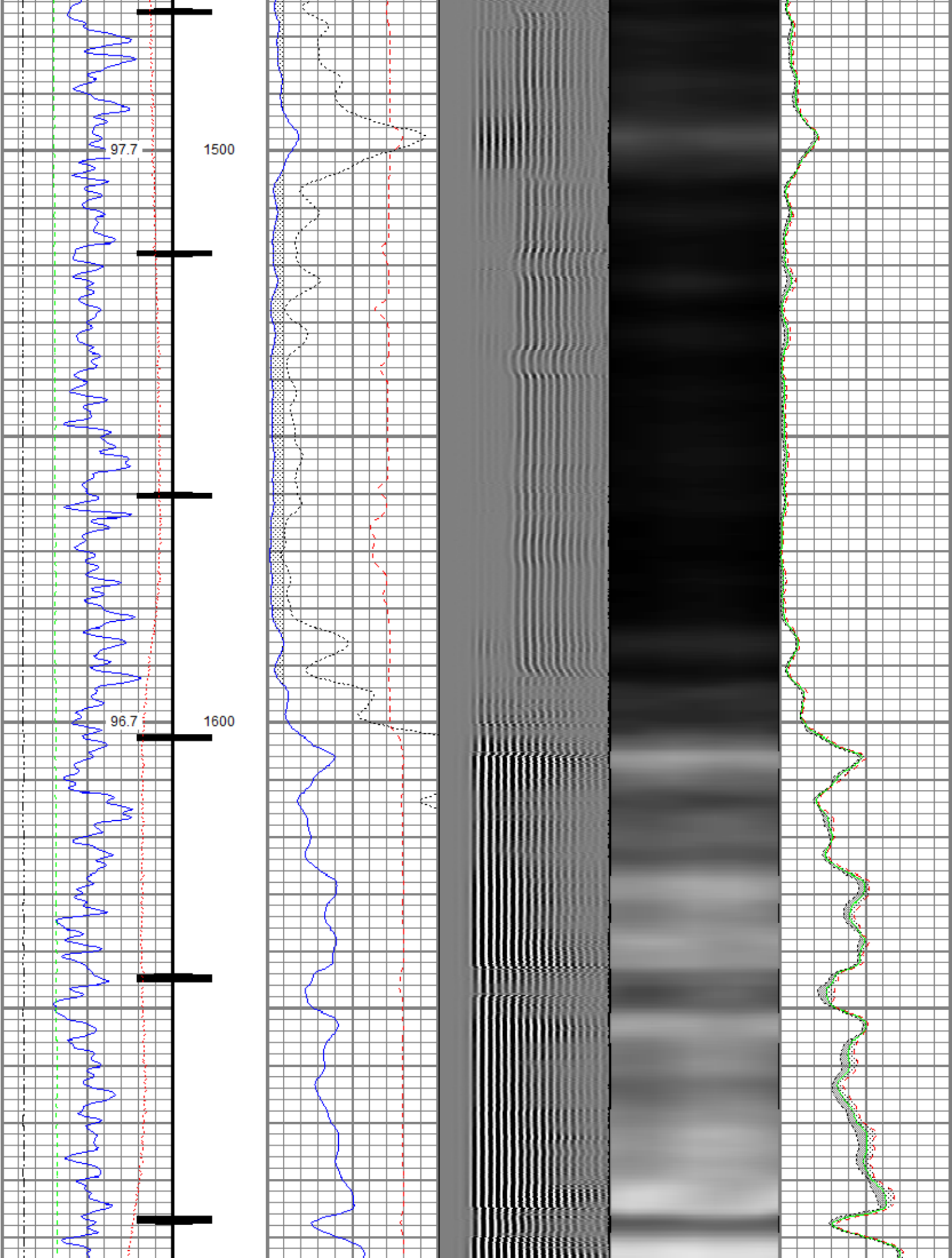


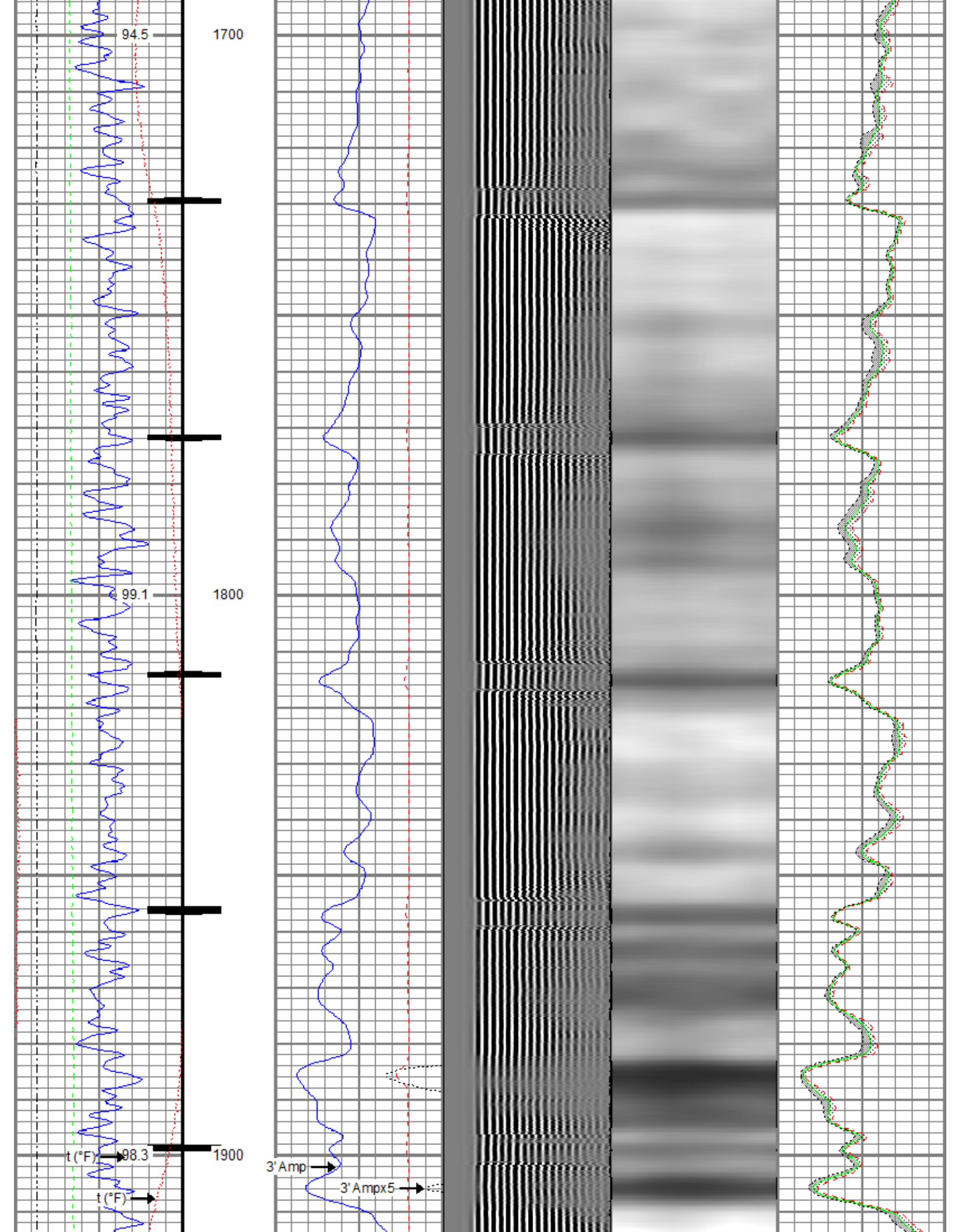


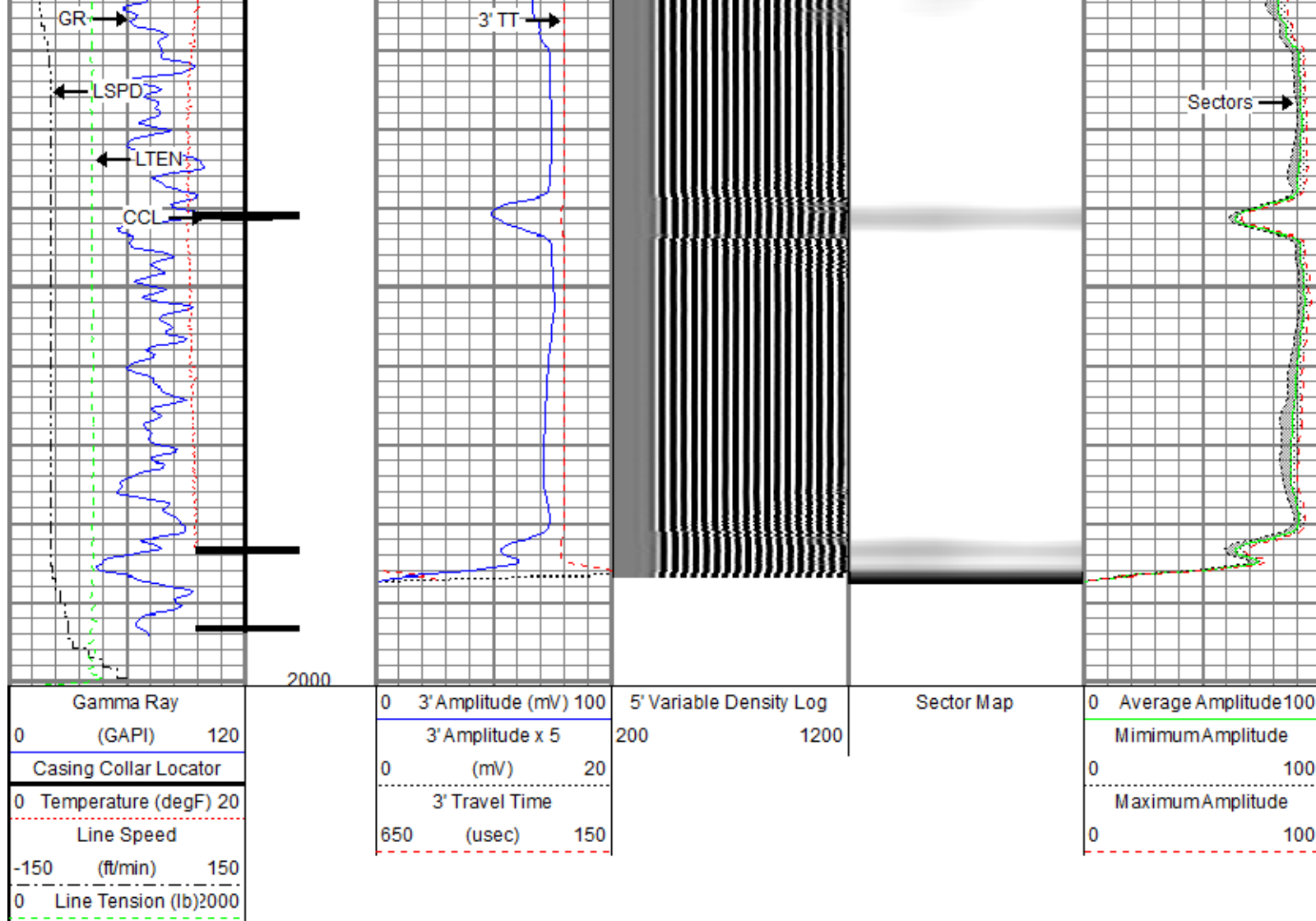








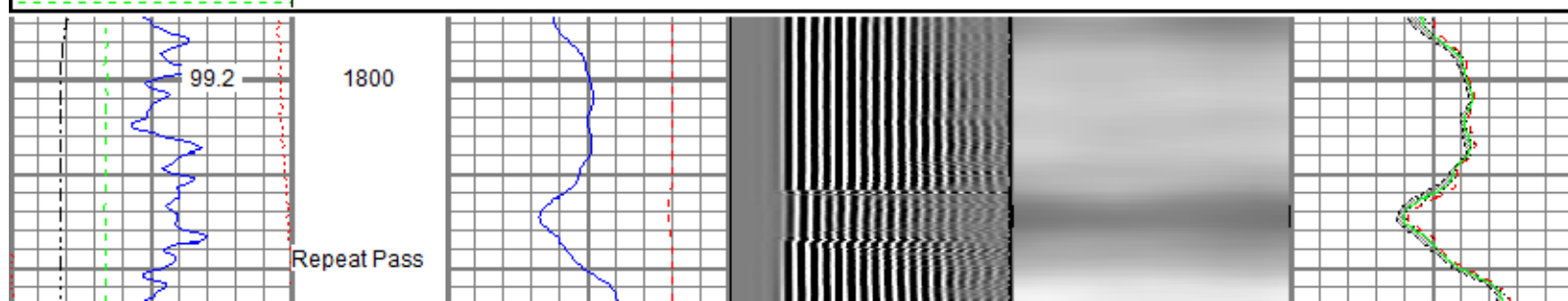
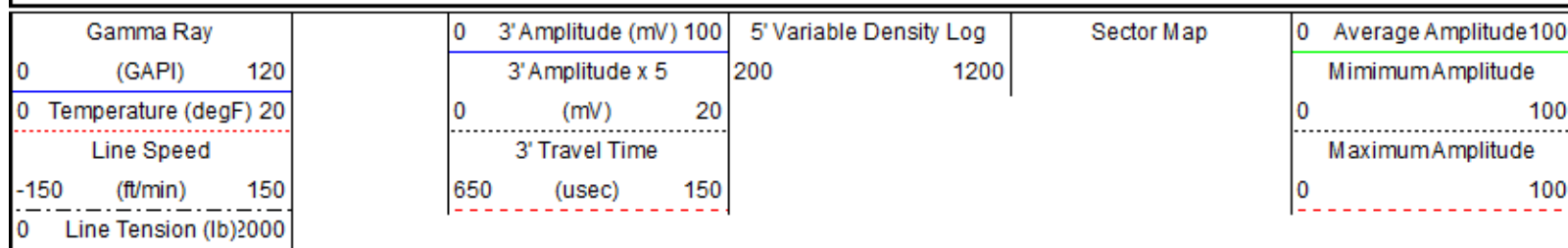


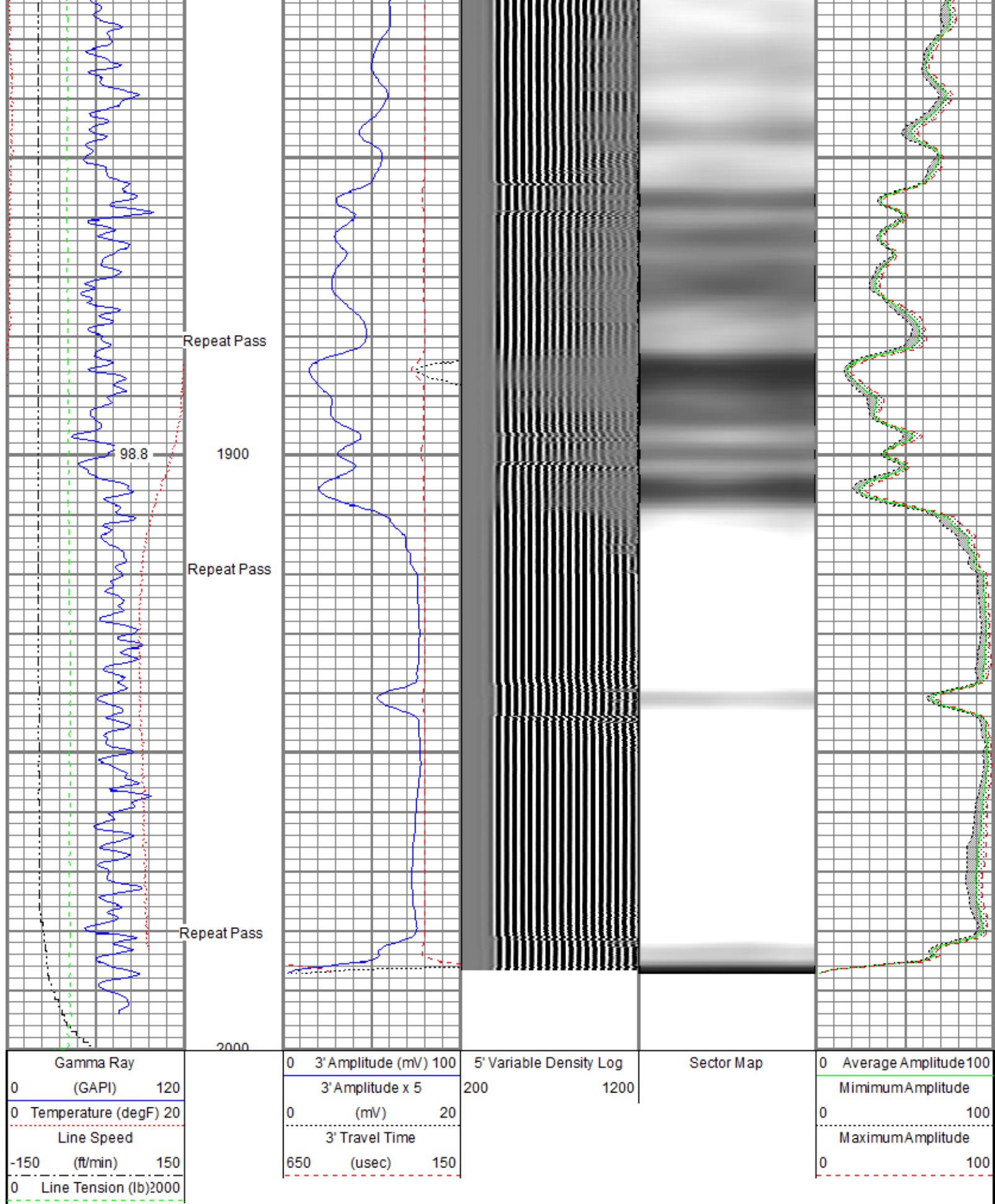



Repeat Section

Recorded With No Surface Induced Pressure

Database File: anadarko_stieber__12-24a-rcbl_11-oct-2016_w8.db
 Dataset Pathname: repeat
 Presentation Format: ros_radri
 Dataset Creation: Tue Oct 11 07:30:11 2016
 Charted by: Depth in Feet scaled 1:240





Sensor	Offset (ft)	Schematic	Description	Length (ft)	O.D. (in)	Weight (lb)
			Titan_Electric_Cable_Heads-Titan_1-11/16"	1.03	1.69	5.40

				Electric Cable Head with 1" Fishing Neck			
				Probe_ELine_BowSpring_Centralizer-P_EBSC_2.88 Probe 2-3/4" Electric Inline Bowspring Centralizer	2.75	20.00	
HeadVolt	19.51						
Temp	16.72						
WVFS8	14.55			Probe_RADII-C-P_RBT_2750 (FW1302-002) Probe 2-3/4" Sector Cement Bond Tool with Temperature Probe	9.19	2.75	105.00
WVFS7	14.55						
WVFS6	14.55						
WVFS5	14.55						
WVFS4	14.55						
WVFS3	14.55						
WVFS2	14.55						
WVFS1	14.55						
WVFCAL	14.55						
WVF3FT	14.55						
WVF5FT	13.55						
HEADVOLT	10.30						
				Probe_ELine_BowSpring_Centralizer-P_EBSC_2.88 Probe 2-3/4" Electric Inline Bowspring Centralizer	2.75	20.00	
DCCL	6.51						
CCL	6.51						
				Probe_GR_CCL-P_CGR_2750_S (FW1307-03) Probe 2-3/4" Digital CCL / Gamma Ray Combined	4.54	2.75	55.00
GR	3.77						
				Probe_ELine_BowSpring_Centralizer-P_EBSC_2.88 Probe 2-3/4" Electric Inline Bowspring Centralizer	2.75	20.00	
Dataset: anadarko_stieber_12-24a-rcbl_11-oct-2016_w8.db: field/well/run1/main Total length: 23.40 ft Total weight: 225.40 lb O.D.: 2.75 in							

Gamma Ray Calibration Report

Serial Number: FW1307-038
 Tool Model: P_CGR_2750_S
 Performed: Sat Feb 06 11:43:09 2016

Calibrator Value: 1.0 GAPI

Background Reading: 0.0 cps
 Calibrator Reading: 1.6 cps

Sensitivity: 0.6061 GAPI/cps

Segmented Cement Bond Log Calibration Report

Serial Number: FW1302-002
 Tool Model: P_RBT_2750

Calibration Casing Diameter: 4.500 in
 Calibration Depth: 859.745 ft

Master Calibration, performed Tue Oct 11 07:23:09 2016:

	Raw (v)		Calibrated (mv)		Results	
	Zero	Cal	Zero	Cal	Gain	Offset
3'	0.000	0.449	0.800	81.196	178.901	0.800
CAL	0.000	0.729				
5'	0.000	0.402	0.800	81.196	200.147	0.800
SUM						
S1	0.000	0.471	0.000	100.000	212.520	0.000
S2	0.000	0.484	0.000	100.000	206.670	0.000
S3	0.000	0.482	0.000	100.000	207.429	0.000
S4	0.000	0.463	0.000	100.000	215.863	0.000
S5	0.000	0.447	0.000	100.000	223.666	0.000
S6	0.000	0.437	0.000	100.000	228.948	0.000
S7	0.000	0.432	0.000	100.000	231.714	0.000
S8	0.000	0.445	0.000	100.000	224.494	0.000

Internal Reference Calibration, performed Wed Sep 14 11:34:04 2016:

	Raw (v)		Calibrated (v)		Results	
	Zero	Cal	Zero	Cal	Gain	Offset
CAL	0.000	0.000	0.000	0.729	1.000	0.000

Air Zero Calibration, performed Tue Oct 11 07:22:47 2016:

	Raw (v)		Calibrated (v)		Results	
	Zero		Zero		Offset	
3'	0.000		0.000		0.000	
5'	0.000		0.000		0.000	
SUM						
S1	0.000		0.000		0.000	
S2	0.000		0.000		0.000	
S3	0.000		0.000		0.000	
S4	0.000		0.000		0.000	
S5	0.000		0.000		0.000	
S6	0.000		0.000		0.000	
S7	0.000		0.000		0.000	
S8	0.000		0.000		0.000	



RELIANCE
OILFIELD SERVICES

Company	Kerr-McGee Oil & Gas Onshore, L.P.
Well	Stieber 12-24A
Field	Wattenberg
County	Weld
State	Colorado