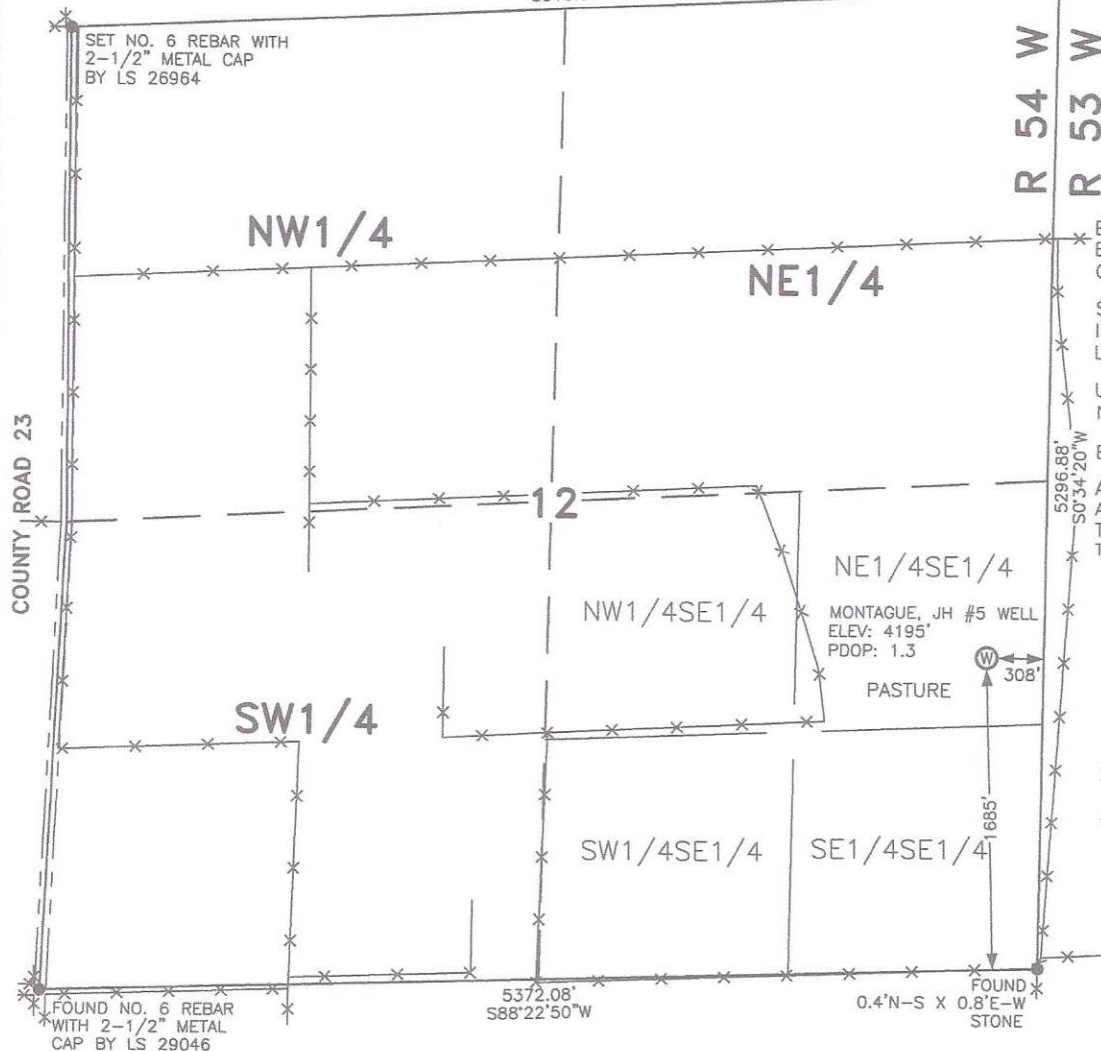


WELL LOCATION FOR SCHNEIDER ENERGY SERVICES

T 9 N

N87°11'30"E
5315.96'

FOUND NO. 4 REBAR-NO CAP
REPLACED WITH NO. 6 REBAR
WITH 2-1/2" METAL CAP
BY LS 26964



NOTES

BEARINGS SHOWN HEREON ARE
BASED UPON RTK GPS
OBSERVATIONS

SEE IMPROVEMENT PLAT FOR
IMPROVEMENTS WITHIN 600' OF
LOCATION.

USGS QUAD MAP:
NORTH STERLING RESERVOIR, COLO.

ELEVATIONS BASED ON NAVD 1988

ALL DISTANCES TO SECTION LINES
ARE MEASURED PERPENDICULAR
TO AND ARE AT RIGHT ANGLES
TO SAID SECTION LINES.

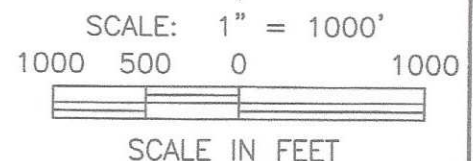
LEGEND

⊙ FIELD SURVEYED
WELL LOCATION

== == == ROAD

-x-x- FENCE

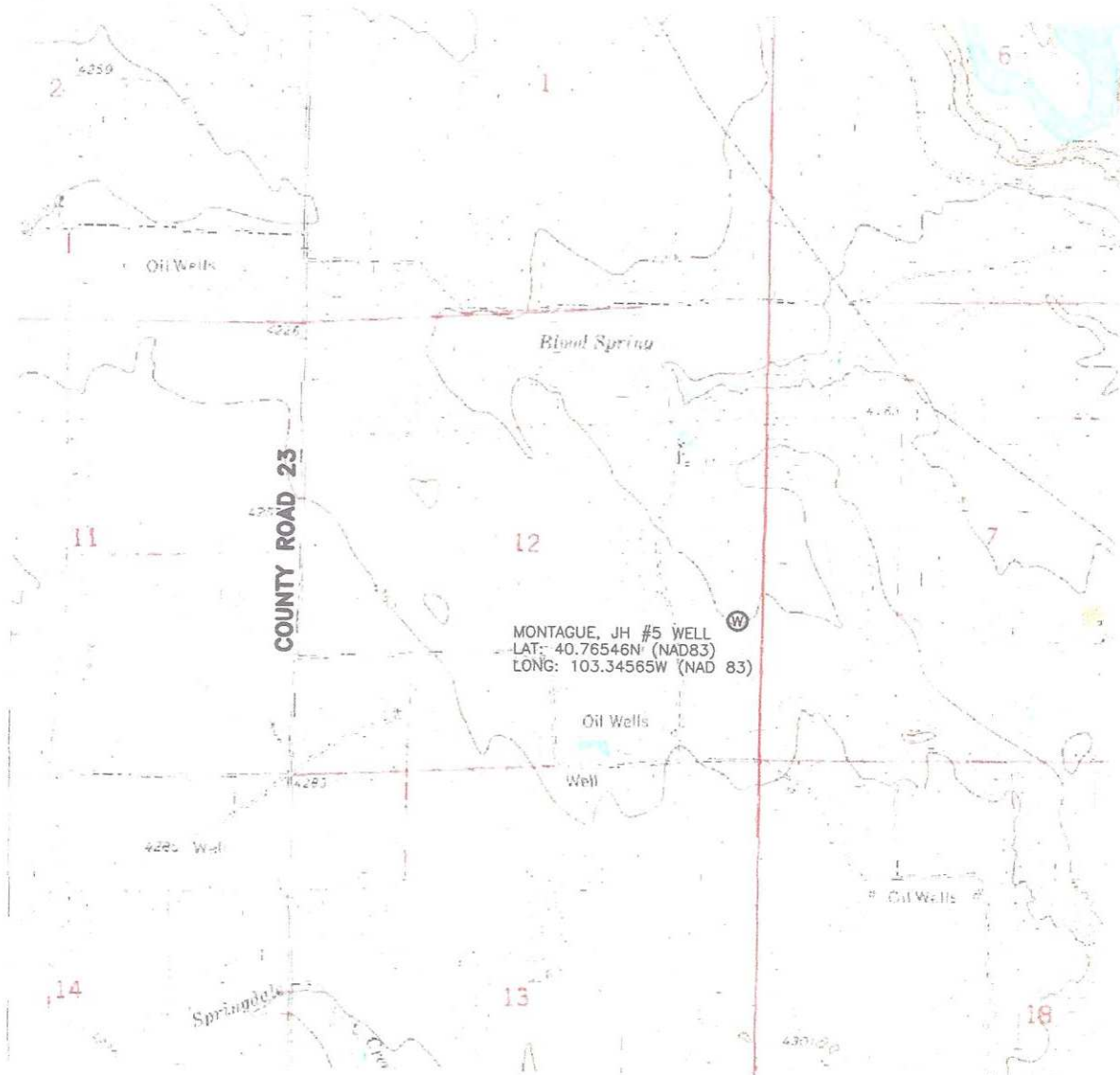
THIS WELL LOCATION PLAT HAS BEEN PREPARED FOR SCHNEIDER ENERGY SERVICES
TO LOCATE THE MONTAGUE, JH #5 WELL BEING 308 FEET FROM THE EAST LINE AND
1685 FEET FROM THE SOUTH LINE IN THE NE1/4SE1/4 OF SECTION 12,
TOWNSHIP 9 NORTH, RANGE 54 WEST OF THE 6TH P.M., LOGAN COUNTY, COLORADO.
THE SURFACE ELEVATION AT THIS POINT IS 4195 FEET.
THIS IS NOT A LAND SURVEY PLAT.



LEIBERT-McATEE & ASSOCIATES, INC.

P.O. BOX 442 615 SOUTH TENTH AVENUE
STERLING, CO 80751 970-522-1960

FIELD DATE: 6-7-16	DWG DATE: 6-20-16	GPS OPERATOR: DARREN VEAL
MONTAGUE, JH #5	DWG NO. 910-16	SHEET 1 OF 1



SCALE: 1"=2000'
0 1000 2000
SCALE IN FEET

IMPROVEMENTS



LEGEND

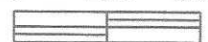
⊙ FIELD SURVEYED WELL LOCATION

— x — x — FENCE



SCALE: 1"=200'

0 100 200



SCALE IN FEET