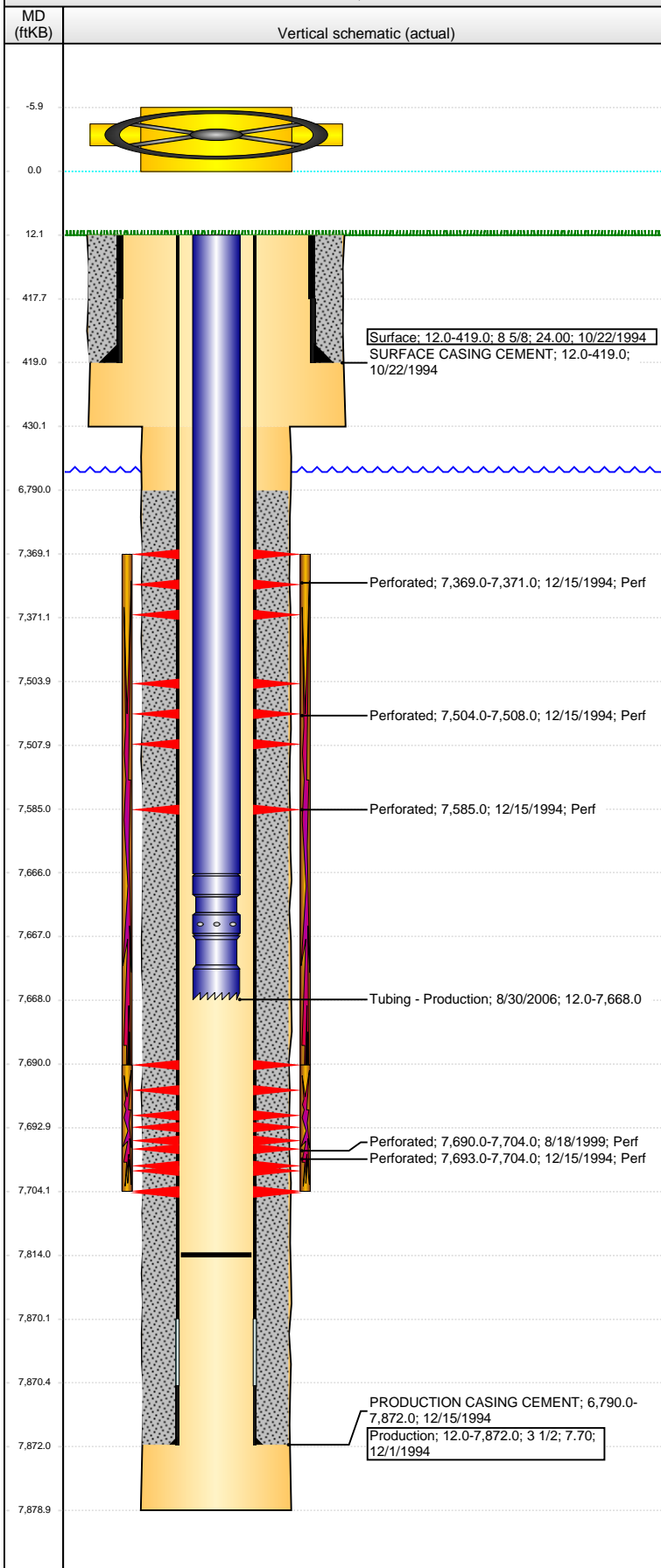


Well Name: UPV 23-08H6

DEVIATED - ORIGINAL HOLE, 10/11/2016 7:31:30 AM



Well Header

API	Business Unit	District	Well Config
05-123-18628	DJ BASIN	15	DEVIATED
Original KB Elevation (ft)	KB - GL / MSL (ftKB)	Spud Date	P & A Date
4,872	12.00	10/21/1994	
Comment			
Directions To Well			

Congressional Location

Quarter 3	Quarter 4	Section	Township	TwNShp N/S Dir	Range	Range E/W Dir
SW	NE	23	5	N	66	W

Bottom Hole Location

North-South Distance (ft)	From N or S Line	East-West Distance (ft)	From E or W Line
1,965.0	FNL	832.0	FEL

Plug Back Total Depths

Date	Depth (ftKB)	Method	Com
12/14/1994	7,795.0	CASED HOLE LOG	DEPTH LOGGER
8/29/2006	7,717.0	TAG	TAG FILL @ 7717'
8/30/2006	7,814.0	TAG	CIRCULATE DOWN AND CLEAN OUT FILL TO RU...

Wellbore Sections

Section Des	Size (in)	Act Top, MD (ftKB)	Act Btm, MD (ftKB)
SURFACE	11	12	430
PRODUCTION	6 1/4	430	7,879

Zone Statuses

Zone Name	Status Date	Status	Fluid Type	Job	Prod Method
NIOBRARA-C...	6/23/2009	PR	Water		Flowing
NIOBRARA-C...	9/6/2016	PR			
NIOBRARA	12/28/1994	PR		DRILLING/CO...	
CODELL	12/28/1994	PR		DRILLING/CO...	
CODELL	8/21/1999	PR		RE-FRAC, 8/17...	
CODELL	10/2/2006	PR		TRI-FRAC, 7/3...	

Casing Strings

Surface, 419.0ftKB

Casing Description	Run Date	OD (in)	Wt/Len (l...)	Grade	Top, MD (ft...)	MD (ftKB)
Surface	10/22/1994	8 5/8	24.00		12.0	419.0

Production, 7,872.0ftKB

Casing Description	Run Date	OD (in)	Wt/Len (l...)	Grade	Top, MD (ft...)	MD (ftKB)
Production	12/1/1994	3 1/2	7.70		12.0	7,872.0

Cement

Description	Top Depth (ftKB)	Bottom Depth (ftKB)
SURFACE CASING CEMENT	12.0	419.0
Description	Top Depth (ftKB)	Bottom Depth (ftKB)
PRODUCTION CASING CEMENT	6,790.0	7,872.0

Tubing Strings

Tubing Description	Run Date	String...	ID (in)	Wt (lb/ft)	Grade	Len (ft)	Set De...
Tubing - Production	8/30/2006	2 1/16	1.751	3.25	J-55	7,656.00	

Tubing Components

Item Des	OD (in)	Wt (lb/ft)	Grade	Jts	Len (ft)	Btm (ftKB)	Btm (TVD) (ftKB)
Tubing	2 1/16	3.25	J-55	236	7,654.00	7,666.0	
Pump Seating	2			1	1.00	7,667.0	
Nipple	1/16						
Notched collar	2 1/16			1	1.00	7,668.0	

Perforation Data

Zone	Bnch/St g	Entered Shot Total	Top (ftKB)	Btm (ftKB)	Date
NIOBRARA, ORIGINAL HOLE		2	7,369.00	7,371.00	12/15/1994
NIOBRARA, ORIGINAL HOLE		4	7,504.00	7,508.00	12/15/1994
NIOBRARA, ORIGINAL HOLE		1	7,585.00	7,585.00	12/15/1994
CODELL, ORIGINAL HOLE			7,690.00	7,704.00	8/18/1999
CODELL, ORIGINAL HOLE		9	7,693.00	7,704.00	12/15/1994

Well Name: UPV 23-08H6

DEVIATED - ORIGINAL HOLE, 10/11/2016 7:31:33 AM

Stimulations & Treatments

Date	Zone	Primary Job Type
12/22/1994	NIOBRARA-CODELL, ORIGINAL HOLE	DRILLING/COMPLETION - ORIGINAL
Technical Result	Tech Result Details	Tech Result Note

Comment
LIMITED ENTRY FRAC

Date	Zone	Primary Job Type
8/18/1999	CODELL, ORIGINAL HOLE	RE-FRAC
Technical Result	Tech Result Details	Tech Result Note

Comment

Date	Zone	Primary Job Type
8/28/2006	CODELL, ORIGINAL HOLE	TRI-FRAC
Technical Result	Tech Result Details	Tech Result Note

Comment

Other In Hole

Run Date	Des	OD (in)	Top (ftKB)	Btm (ftKB)

Logs

Date	Type	Top, MD (ftKB)	Btm, MD (ftKB)
11/30/1994	GAMMA RAY	428.0	7,843.0
12/14/1994	CEMENT BOND	6,670.0	7,790.0
5/11/2016	GYRO	0.0	7,550.0

