

HALLIBURTON

iCem[®] Service

WPX ENERGY ROCKY MOUNTAIN LLC-EBUS

For: Mark Mewshaw/Lynn Cass

Date: Saturday, July 16, 2016

FEDERAL GM 422-9 Surface

API# 05-045-22528-00

Sincerely,

Grand Junction Cement Engineering

2.0 Real-Time Job Summary

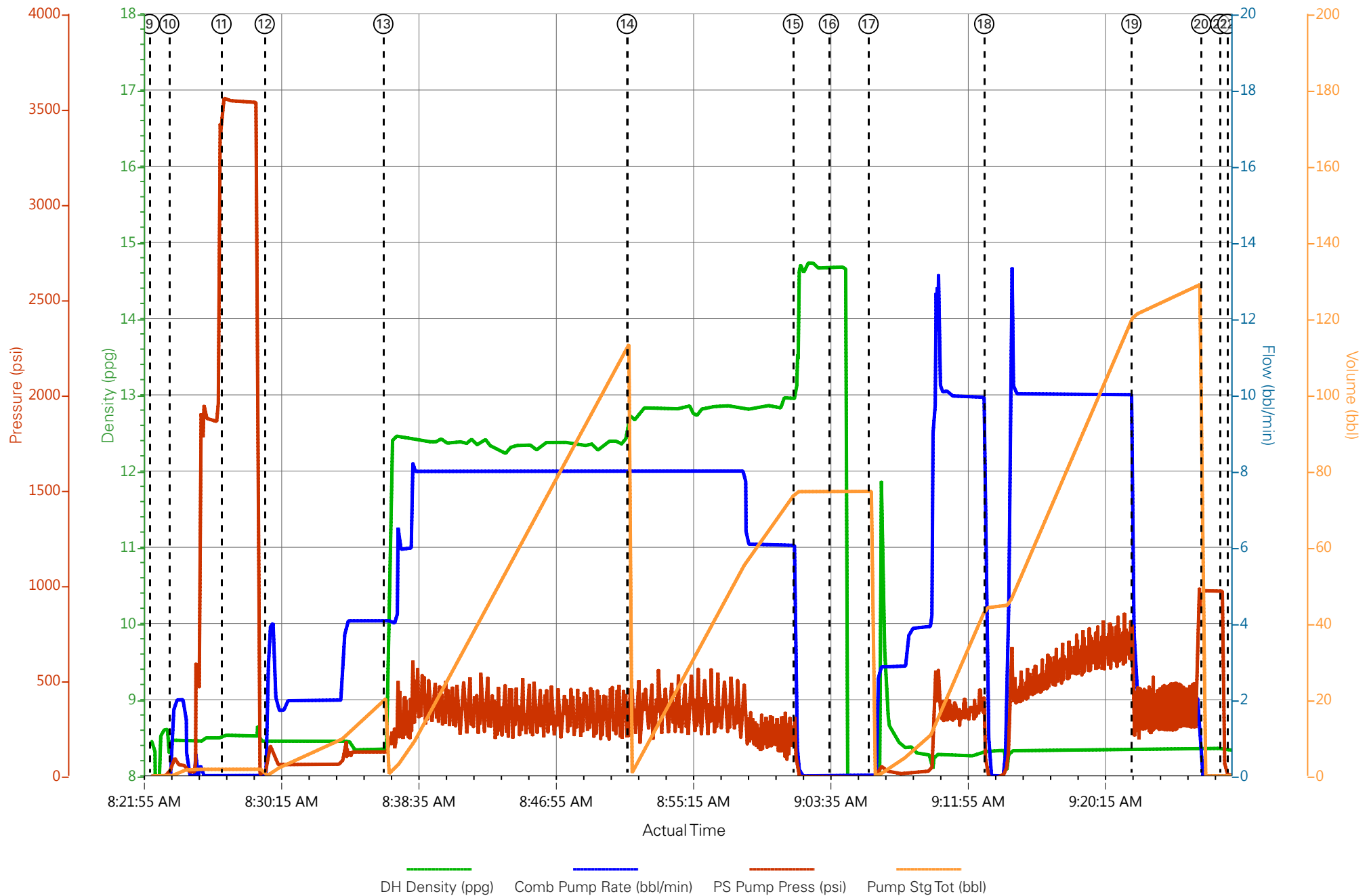
2.1 Job Event Log

Type	Seq. No.	Graph Label	Date	Time	Source	Downhole Density (ppg)	Combined Pump Rate (bbl/min)	Pass-Side Pump Pressure (psi)	Pump Stage Total (bbl)	Comments
Event	1	Call Out	7/15/2016	23:00:00	USER					ELITE # 8
Event	2	Pre-Convoy Safety Meeting	7/16/2016	00:30:00	USER					ALL HES EMPLOYEES
Event	3	Arrive At Loc	7/16/2016	02:00:00	USER					ARRIVED 3 HRS EARLY DID NOT START CHARGING HOURS UNTIL REQUESTED ON LOCATION TIME
Event	4	Assessment Of Location Safety Meeting	7/16/2016	02:15:00	USER					ALL HES EMPLOYEES
Event	5	Pre-Rig Up Safety Meeting	7/16/2016	02:30:00	USER					ALL HES EMPLOYEES
Event	6	Rig-Up Equipment	7/16/2016	02:45:00	USER					1 HT-400 PUMP TRUCK (ELITE # 8) 1 660 BULK TRUCK 1 BODYLOAD 1 F-550 PICKUP
Event	7	Comment	7/16/2016	02:55:00	USER					CUSTOMER WAS OFFERED SDS WATER TEMP @ 65 F PH: 7 CHLORIDES @ 0 PPM
Event	8	Pre-Job Safety Meeting	7/16/2016	08:00:00	USER					ALL HES EMPLOYEES AND RIG CREW RIG CIRCULATED FOR 30 MIN @ 10 BBL/MIN PRIOR TO JOB
Event	9	Start Job	7/16/2016	08:22:27	USER					TD: 1635 TP: 1625 CSG: 9 5/8 32.3# H-40 SJ: 44.95 OH: 13 1/2 MUD WEIGHT: 9.1 PPG
Event	10	Prime Lines	7/16/2016	08:23:38	RTD Import	8.33	2.0	60	2.0	PRIME LINES FRESH WATER

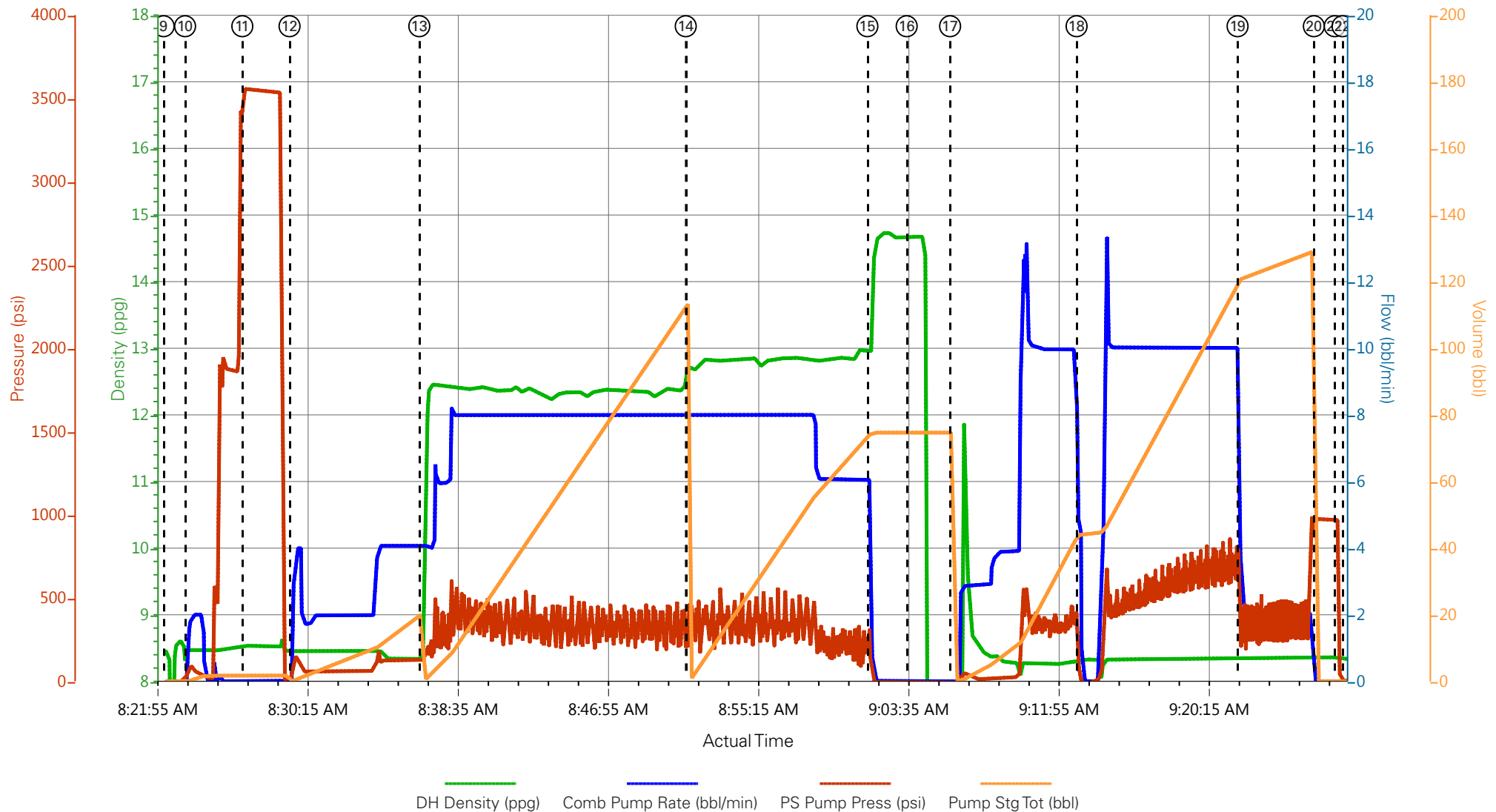
Event	11	Test Lines	7/16/2016	08:26:48	RTD Import	8.33		3551	2.0	PRESSURE TEST OK
Event	12	Fresh Water Spacer	7/16/2016	08:29:26	RTD Import	8.33	4.0	124	20.0	20 BBL FRESH WATER SPACER
Event	13	Pump Lead Cement	7/16/2016	08:36:38	RTD Import	12.3	8.0	370	101.7	240 SKS (101.7 BBLS) 12.3 PPG 2.38 YIELD 13.77 GAL/SK LEAD CEMENT WEIGHT VERIFIED VIA PRESSURIZED MUD SCALES
Event	14	Pump Tail Cement	7/16/2016	08:51:25	RTD Import	12.8	8.0	350	65.7	175 SKS (65.7 BBLS) 12.8 PPG 2.11 YIELD 11.78 GAL/SK TAIL CEMENT WEIGHT VERIFIED VIA PRESSURIZED MUD SCALES
Event	15	Shutdown	7/16/2016	09:01:29	RTD Import					
Event	16	Drop Top Plug	7/16/2016	09:03:40	RTD Import					PLUG AWAY NO ISSUES
Event	17	Pump Displacement	7/16/2016	09:06:05	RTD Import	8.4	10.0	723	124.3	FRESH WATER DISPLACEMENT
Event	18	Shutdown	7/16/2016	09:13:06	USER					SHUTDOWN RE-TIGHTEN CEMENT HEAD
Event	19	Slow Rate	7/16/2016	09:22:01	RTD Import	8.4	2.0	340	114.3	SLOW RATE TO BUMP PLUG
Event	20	Bump Plug	7/16/2016	09:26:16	RTD Import	8.4	2.0	350	124.3	PRESSURE PRIOR TO BUMPING PLUG @ 350 PSI BUMPED PLUG UP TO 970 PSI
Event	21	Check Floats	7/16/2016	09:27:25	RTD Import			970	124.3	FLOATS HOLDING 1/2 BBL BACK TO TRUCKS TANK
Event	22	End Job	7/16/2016	09:27:51	USER					GOOD RETURNS THROUGHOUT JOB PIPE WAS STATIC THROUGHOUT JOB CIRCULATED 30 BBLS

						CEMENT TO SURFACE
Event	23	Pre-Rig Down Safety Meeting	7/16/2016	09:45:00	USER	ALL HES EMPLOYEES
Event	24	Rig-Down Equipment	7/16/2016	10:00:00	USER	
Event	25	Pre-Convoy Safety Meeting	7/16/2016	10:45:00	USER	ALL HES EMPLOYEES
Event	26	Crew Leave Location	7/16/2016	11:00:00	USER	THANK YOU FOR USING HALLIBURTON CEMENT DAVID CAMPBELL AND CREW

WPX - FEDERAL GM 422-9 - 9 5/8 SURFACE



WPX - FEDERAL GM 422-9 - 9 5/8 SURFACE



- | | | | | |
|---|--------------------------|---------------------|--------------------------------|------------------------------|
| ① Call Out | ⑦ Comment | ⑬ Pump Lead Cement | ⑲ Slow Rate | 25 Pre-Convoy Safety Meeting |
| ② Pre-Convoy Safety Meeting | ⑧ Pre-Job Safety Meeting | ⑭ Pump Tail Cement | 20 Bump Plug | 26 Crew Leave Location |
| ③ Arrive At Loc | ⑨ Start Job | ⑮ Shutdown | 21 Check Floats | |
| ④ Assessment Of Location Safety Meeting | ⑩ Prime Lines | ⑯ Drop Top Plug | 22 End Job | |
| ⑤ Pre-Rig Up Safety Meeting | ⑪ Test Lines | ⑰ Pump Displacement | 23 Pre-Rig Down Safety Meeting | |
| ⑥ Rig-Up Equipment | ⑫ Fresh Water Spacer | ⑱ Shutdown | 24 Rig-Down Equipment | |

▼ **HALLIBURTON** | iCem® Service

Created: 2016-07-16 09:46:05, Version: 4.2.393

Edit

Customer: WPX ENERGY ROCKY MOUNTAIN LLC-EBUS

Job Date: 7/16/2016

Well: FEDERAL GM 422-9

Representative: ROBERT BROWN

Sales Order #: 0903422787

ELITE # 8: DAVID CAMPBELL / CLIFF SPARKS