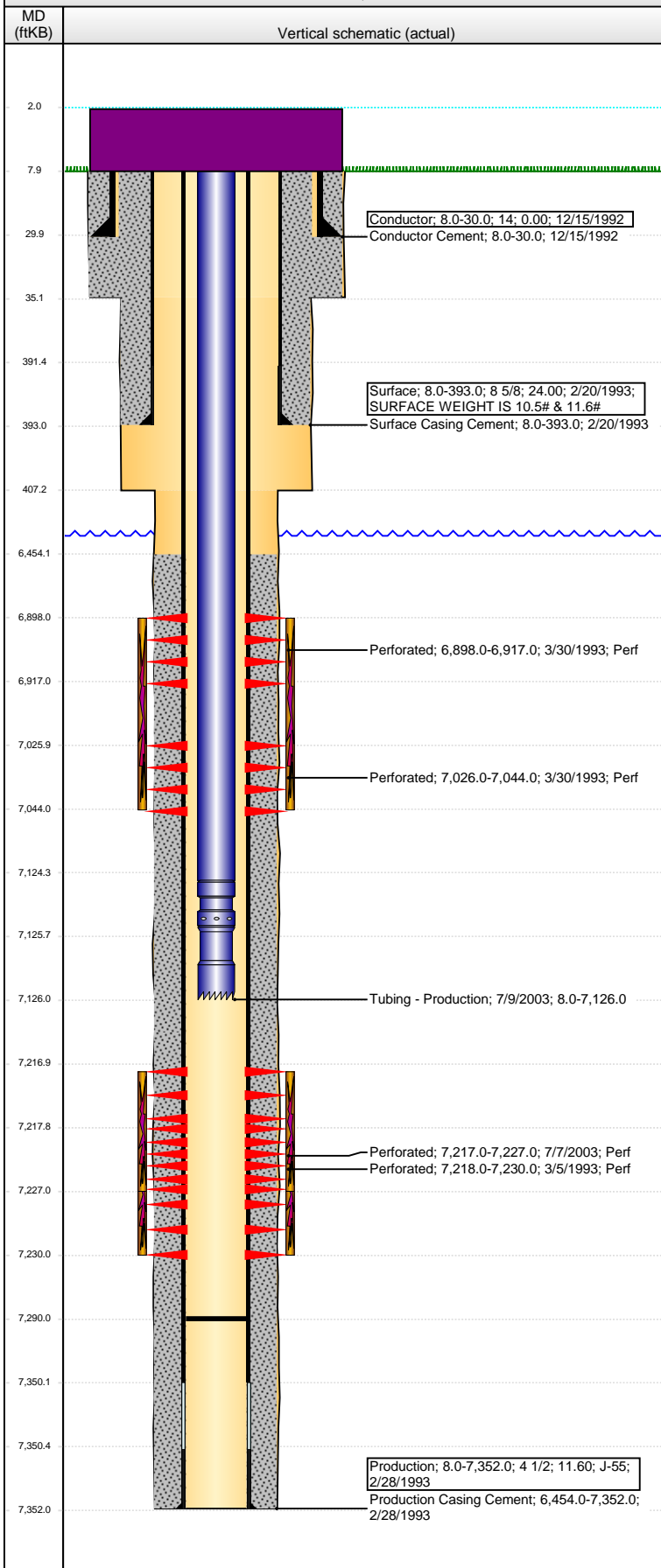


Well Name: RHOADARMER 02-26

VERTICAL - ORIGINAL HOLE, 10/5/2016 4:36:57 PM



Well Header

API	Business Unit	District	Well Config
05-123-16612	DJ BASIN	15	VERTICAL
Original KB Elevation (ft)	KB - GL / MSL (ftKB)	Spud Date	P & A Date
4,781	8.00	12/15/1992	

Comment

DISCREPANCY:
SPUD DRL RPT 12/15/92, ST RPT 12/16/92. USED DRL RPT.
TD DRL RPT 7348', ST RPT/LOGS 7352', USED LOGS.
SURF CSG DRL RPT 393', ST RPT 383'. USED DRL RPT.

Directions To Well

Congressional Location

Quarter 3	Quarter 4	Section	Township	Twnshp N/S Dir	Range	Range E/W Dir
NW	NE	26	5 N		66	W

Bottom Hole Location

North-South Distance (ft)	From N or S Line	East-West Distance (ft)	From E or W Line

Plug Back Total Depths

Date	Depth (ftKB)	Method	Com
3/5/1993	7,280.0	CASED HOLE LOG	DEPTH LOGGER ON CBL
7/9/2003	7,290.0	TAG	C/O TO LAND TBG

Wellbore Sections

Section Des	Size (in)	Act Top, MD (ftKB)	Act Btm, MD (ftKB)
CONDUCTOR	16 1/2	8	35
SURFACE	12 1/4	35	407
PRODUCTION	7 7/8	407	7,352

Zone Statuses

Zone Name	Status Date	Status	Fluid Type	Job	Prod Method
CODELL	4/12/1993	PR	Oil	DRILLING/CO...	
CODELL	7/17/2003	PR	Oil	RE-FRAC, 7/7/...	
NIOBRARA	12/4/1995	PR	Oil	RECOMPLETI...	

Casing Strings

Conductor, 30.0ftKB

Casing Description	Run Date	OD (in)	Wt/Len (l...)	Grade	Top, MD (ft...)	MD (ftKB)
Conductor	12/15/1992	14			8.0	30.0

Surface, 393.0ftKB

Casing Description	Run Date	OD (in)	Wt/Len (l...)	Grade	Top, MD (ft...)	MD (ftKB)
Surface	2/20/1993	8 5/8	24.00		8.0	393.0

Production, 7,352.0ftKB

Casing Description	Run Date	OD (in)	Wt/Len (l...)	Grade	Top, MD (ft...)	MD (ftKB)
Production	2/28/1993	4 1/2	11.60	J-55	8.0	7,352.0

Cement

Description	Top Depth (ftKB)	Bottom Depth (ftKB)
Conductor Cement	8.0	30.0
Surface Casing Cement	8.0	393.0
Production Casing Cement	6,454.0	7,352.0

Tubing Strings

Tubing Description	Run Date	String...	ID (in)	Wt (lb/ft)	Grade	Len (ft)	Set De...
Tubing - Production	7/9/2003	2 3/8	1.995	4.70	J-55	7,118.00	

Tubing Components

Item Des	OD (in)	Wt (lb/ft)	Grade	Jts	Len (ft)	Btm (ftKB)	Btm (TVD) (ftKB)
EUE 8rd Tubing	2 3/8	4.70	J-55	229	7,116.50	7,124.5	
Seating Nipple	2 3/8			1	1.00	7,125.5	
Notched collar	2 3/8			1	0.50	7,126.0	

Perforation Data

Zone	Bnch/St g	Entered Shot Total	Top (ftKB)	Btm (ftKB)	Date
NIOBRARA, ORIGINAL HOLE	A		6,898.00	6,917.00	3/30/1993
NIOBRARA, ORIGINAL HOLE	B		7,026.00	7,044.00	3/30/1993
CODELL, ORIGINAL HOLE		40	7,217.00	7,227.00	7/7/2003
CODELL, ORIGINAL HOLE		24	7,218.00	7,230.00	3/5/1993

Well Name: RHOADARMER 02-26

VERTICAL - ORIGINAL HOLE, 10/5/2016 4:36:59 PM

Stimulations & Treatments

Date	Zone	Primary Job Type
3/10/1993	CODELL, ORIGINAL HOLE	DRILLING/COMPLETION - ORIGINAL

Technical Result	Tech Result Details	Tech Result Note

Comment

Date	Zone	Primary Job Type
11/24/1995	NIOBRARA, ORIGINAL HOLE	RECOMPLETION

Technical Result	Tech Result Details	Tech Result Note

Comment

Date	Zone	Primary Job Type
7/8/2009	CODELL, ORIGINAL HOLE	RE-FRAC

Technical Result	Tech Result Details	Tech Result Note

Comment

Other In Hole

Run Date	Des	OD (in)	Top (ftKB)	Btm (ftKB)

Logs

Date	Type	Top, MD (ftKB)	Btm, MD (ftKB)
2/28/1993	INDUCTION	4,290.0	7,352.0
3/5/1993	CBL/CCL/GR	6,350.0	7,275.0
4/28/2016	GYRO	0.0	7,050.0

