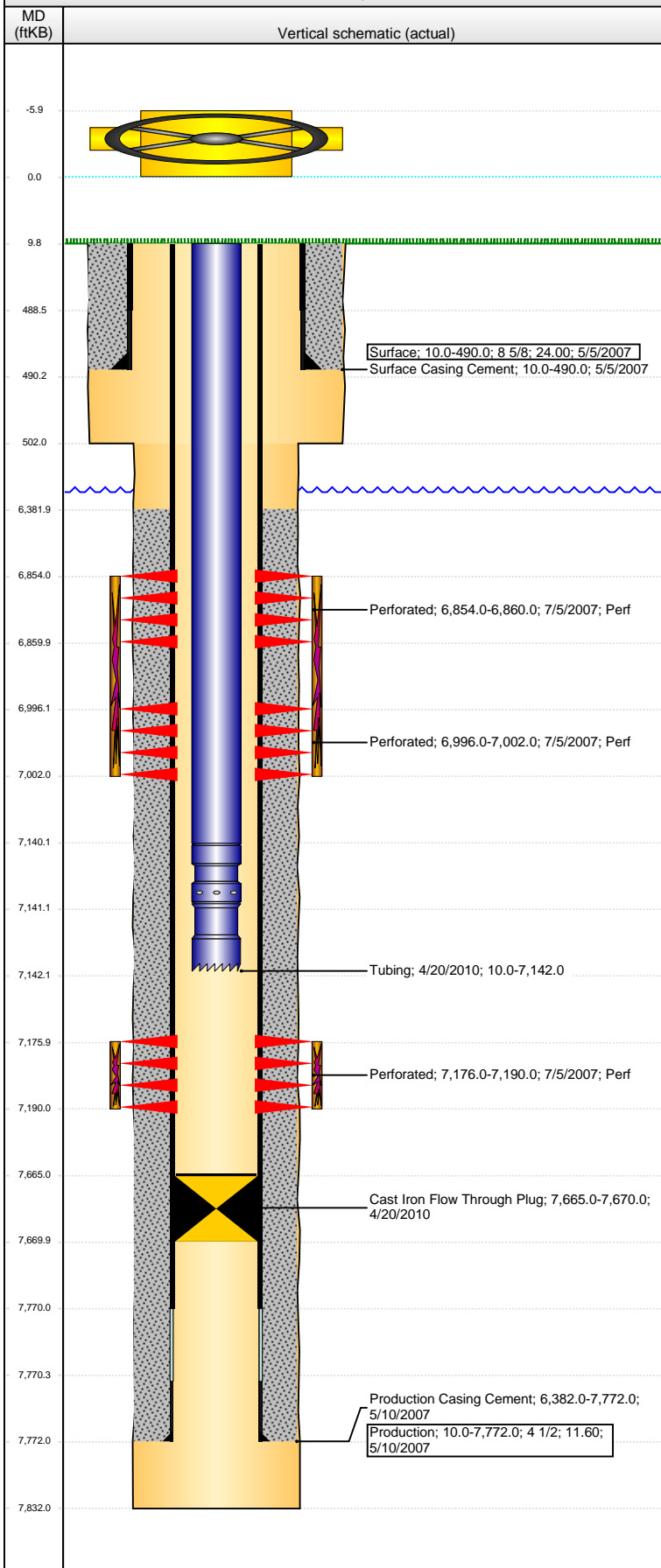


Wellbore Schematic Input Report

Well Name: RHOADARMER 01-26B

VERTICAL - ORIGINAL HOLE, 10/5/2016 4:35:49 PM



Well Header			
API 05-123-24888	Business Unit DJ BASIN	District 15	Well Config VERTICAL
Original KB Elevation (ft) 4,753	KB - GL / MSL (ftKB) 10.00	Spud Date 5/5/2007	P & A Date
Comment			
Directions To Well			
Congressional Location			
Quarter 3 SW	Quarter 4 NE	Section 26	Township 5 N
Range 66 W		Range E/W Dir W	
Bottom Hole Location			
North-South Distance (ft)	From N or S Line	East-West Distance (ft)	From E or W Line
Plug Back Total Depths			
Date	Depth (ftKB)	Method	Com
6/29/2007	7,735.0	CASED HOLE LOG	DEPTH LOGGER ON CBL
4/20/2010	7,665.0	TAG	PUSH PLUG TO LAND TUBING
Wellbore Sections			
Section Des	Size (in)	Act Top, MD (ftKB)	Act Btm, MD (ftKB)
SURFACE	12 1/4	10	502
PRODUCTION	7 7/8	502	7,832
Zone Statuses			
Zone Name	Status Date	Status	Fluid Type
CODELL	7/8/2007	PR	DRILLING/CO...
NIOBRARA	7/8/2007	PR	DRILLING/CO...
Casing Strings			
Surface, 490.0ftKB			
Casing Description Surface	Run Date 5/5/2007	OD (in) 8 5/8	Wt/Len (l... 24.00
Grade 10.0	Top, MD (ft... 10.0	MD (ftKB) 490.0	
Production, 7,772.0ftKB			
Casing Description Production	Run Date 5/10/2007	OD (in) 4 1/2	Wt/Len (l... 11.60
Grade 10.0	Top, MD (ft... 10.0	MD (ftKB) 7,772.0	
Cement			
Description Surface Casing Cement	Top Depth (ftKB) 10.0	Bottom Depth (ftKB) 490.0	
Description Production Casing Cement	Top Depth (ftKB) 6,382.0	Bottom Depth (ftKB) 7,772.0	
Tubing Strings			
Tubing Description Tubing	Run Date 4/20/2010	String... 2 3/8	ID (in) 1.995
Wt (lb/ft) 4.70	Grade J-55	Len (ft) 7,132.00	Set De... 00
Tubing Components			
Item Des	OD (in)	Wt (lb/ft)	Grade
EUE 8rd Tubing	2 3/8	4.70	J-55
Seal Nipple	2 3/8		
Notched collar	2 3/8		
Jts	227	1	1
Len (ft)	7,130.00	1.00	1.00
Btm (ftKB)	7,140.0	7,141.0	7,142.0
Perforation Data			
Zone	Bnch/St g	Entered Shot Total	Date
NIOBRARA, ORIGINAL HOLE	A	36	7/5/2007
NIOBRARA, ORIGINAL HOLE	B	36	7/5/2007
CODELL, ORIGINAL HOLE		56	7/5/2007
Stimulations & Treatments			
Date 7/5/2007	Zone CODELL, ORIGINAL HOLE	Primary Job Type DRILLING/COMPLETION - ORIGINAL	
Technical Result	Tech Result Details	Tech Result Note	
Comment			
Date 7/5/2007	Zone NIOBRARA, ORIGINAL HOLE	Primary Job Type DRILLING/COMPLETION - ORIGINAL	
Technical Result	Tech Result Details	Tech Result Note	
Comment			

Well Name: RHOADARMER 01-26B

VERTICAL - ORIGINAL HOLE, 10/5/2016 4:35:51 PM

Other In Hole

Run Date	Des	OD (in)	Top (ftKB)	Btm (ftKB)
4/20/2010	Cast Iron Flow Through Plug	4	7,665.0	7,670.0

Logs

Date	Type	Top, MD (ftKB)	Btm, MD (ftKB)
5/10/2007	TRIPLE COMBO	490.0	7,798.0
6/29/2007	CEMENT BOND	4,000.0	7,735.0
4/29/2016	GYRO	0.0	7,100.0

