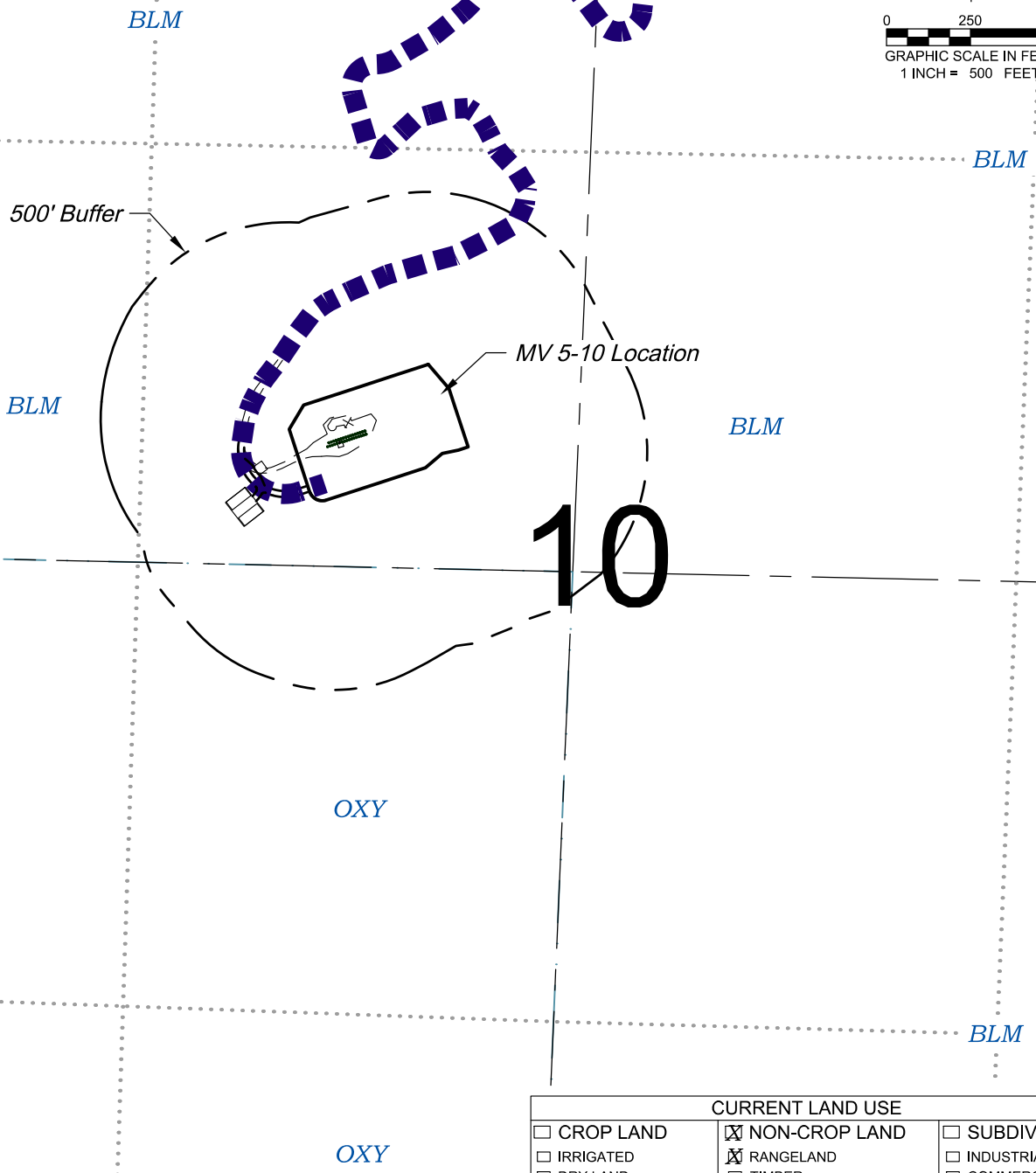
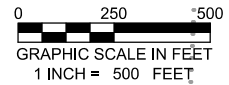


Section 10
T. 7 S., R. 96 W.



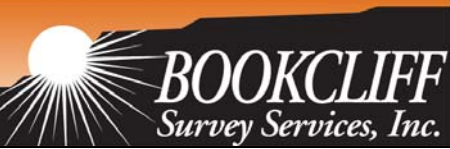
| CURRENT LAND USE | | |
|---|---|--------------------------------------|
| <input type="checkbox"/> CROP LAND | <input checked="" type="checkbox"/> NON-CROP LAND | <input type="checkbox"/> SUBDIVIDED |
| <input type="checkbox"/> IRRIGATED | <input checked="" type="checkbox"/> RANGELAND | <input type="checkbox"/> INDUSTRIAL |
| <input type="checkbox"/> DRY LAND | <input type="checkbox"/> TIMBER | <input type="checkbox"/> COMMERCIAL |
| <input type="checkbox"/> IMPROVED PASTURE | <input type="checkbox"/> RECREATIONAL | <input type="checkbox"/> RESIDENTIAL |
| <input type="checkbox"/> HAY MEADOW | <input checked="" type="checkbox"/> OTHER (describe): Existing Drill Pad | |
| <input type="checkbox"/> CRP | | |

REVISED: 9/2/16

SCALE: 1" = 500'
DATE: 9/24/14
PLAT: 6 of 7
PROJECT: Valley
DFT: cs

Construction Plan Prepared for:
TERRA TEP Rocky Mountain LLC
MV 5-10 Drill Pad - Plat 6
LOCATION

136 East Third Street
Rifle, Colorado 81650
Ph. (970) 625-2720
Fax (970) 625-2773



*Visible Improvements to Well Head
(ft.)*

| <i>Description</i> | <i>Building</i> | <i>Building Unit</i> | <i>High Occu. Building</i> | <i>DOAA</i> | <i>Public Road</i> | <i>Above Ground Utility</i> | <i>Railroad</i> | <i>Property Line</i> |
|--------------------|-----------------|----------------------|----------------------------|-------------|--------------------|-----------------------------|-----------------|----------------------|
| A1 GM 434-10 | >5280 | >5280 | >5280 | >5280 | >5280 | >5280 | >5280 | 181° 356 |
| A2 GM 334-10 | >5280 | >5280 | >5280 | >5280 | >5280 | >5280 | >5280 | 181° 359 |
| A3 GM 34-10 | >5280 | >5280 | >5280 | >5280 | >5280 | >5280 | >5280 | 181° 361 |
| A4 GM 533-10 | >5280 | >5280 | >5280 | >5280 | >5280 | >5280 | >5280 | 181° 364 |
| A5 GM 544-10 | >5280 | >5280 | >5280 | >5280 | >5280 | >5280 | >5280 | 181° 366 |
| A7 GM 432-10 | >5280 | >5280 | >5280 | >5280 | >5280 | >5280 | >5280 | 181° 371 |
| A8 GM 444-10 | >5280 | >5280 | >5280 | >5280 | >5280 | >5280 | >5280 | 181° 374 |
| A9 GM 344-10 | >5280 | >5280 | >5280 | >5280 | >5280 | >5280 | >5280 | 181° 376 |
| A10 GM 333-10 | >5280 | >5280 | >5280 | >5280 | >5280 | >5280 | >5280 | 181° 379 |
| A11 GM 543-10 | >5280 | >5280 | >5280 | >5280 | >5280 | >5280 | >5280 | 181° 381 |
| A12 GM 443-10 | >5280 | >5280 | >5280 | >5280 | >5280 | >5280 | >5280 | 181° 384 |
| A13 GM 33-10 | >5280 | >5280 | >5280 | >5280 | >5280 | >5280 | >5280 | 181° 386 |
| A14 GM 343-10 | >5280 | >5280 | >5280 | >5280 | >5280 | >5280 | >5280 | 181° 389 |
| A15 GM 43-10 | >5280 | >5280 | >5280 | >5280 | >5280 | >5280 | >5280 | 181° 391 |
| A16 GM 442-10 | >5280 | >5280 | >5280 | >5280 | >5280 | >5280 | >5280 | 181° 393 |
| A17 GM 342-10 | >5280 | >5280 | >5280 | >5280 | >5280 | >5280 | >5280 | 181° 396 |
| B2 GM 442-9 | >5280 | >5280 | >5280 | >5280 | >5280 | >5280 | >5280 | 181° 368 |
| B3 GM 312-10 | >5280 | >5280 | >5280 | >5280 | >5280 | >5280 | >5280 | 181° 371 |
| B4 GM 12-10 | >5280 | >5280 | >5280 | >5280 | >5280 | >5280 | >5280 | 181° 373 |
| B5 GM 433-10 | >5280 | >5280 | >5280 | >5280 | >5280 | >5280 | >5280 | 181° 376 |
| B6 GM 511-10 | >5280 | >5280 | >5280 | >5280 | >5280 | >5280 | >5280 | 181° 378 |
| B7 GM 411-10 | >5280 | >5280 | >5280 | >5280 | >5280 | >5280 | >5280 | 181° 381 |
| B8 GM 311-10 | >5280 | >5280 | >5280 | >5280 | >5280 | >5280 | >5280 | 181° 383 |
| B9 GM 11-10 | >5280 | >5280 | >5280 | >5280 | >5280 | >5280 | >5280 | 181° 386 |
| B10 GM 322-10 | >5280 | >5280 | >5280 | >5280 | >5280 | >5280 | >5280 | 181° 388 |
| B11 GM 441-10 | >5280 | >5280 | >5280 | >5280 | >5280 | >5280 | >5280 | 181° 390 |
| B12 GM 422-10 | >5280 | >5280 | >5280 | >5280 | >5280 | >5280 | >5280 | 181° 393 |
| B13 GM 41-10 | >5280 | >5280 | >5280 | >5280 | >5280 | >5280 | >5280 | 181° 395 |
| B14 GM 332-10 | >5280 | >5280 | >5280 | >5280 | >5280 | >5280 | >5280 | 181° 398 |
| B15 GM 341-10 | >5280 | >5280 | >5280 | >5280 | >5280 | >5280 | >5280 | 181° 400 |
| B16 GM 541-10 | >5280 | >5280 | >5280 | >5280 | >5280 | >5280 | >5280 | 181° 403 |
| B17 GM 42-10 | >5280 | >5280 | >5280 | >5280 | >5280 | >5280 | >5280 | 181° 405 |
| | | | | | | | | |
| | | | | | | | | |

Production Equipment

| | | | | | | | | |
|------------|-------|-------|-------|-------|-------|-------|-------|----------|
| Seperators | >5280 | >5280 | >5280 | >5280 | >5280 | >5280 | >5280 | 181° 112 |
| Tanks | >5280 | >5280 | >5280 | >5280 | >5280 | >5280 | >5280 | 181° 267 |

REVISED: 8/31/16

136 East Third Street
Rifle, Colorado 81650
Ph. (970) 625-2720
Fax (970) 625-2773



SCALE: NA
DATE: 9/24/14
PLAT: 6B of 7
PROJECT: Valley
DFT: cs

Construction Plan Prepared for:



TEP Rocky Mountain LLC

*MV 5-10 Drill Pad - Plat 6B
LOCATION TABLE*