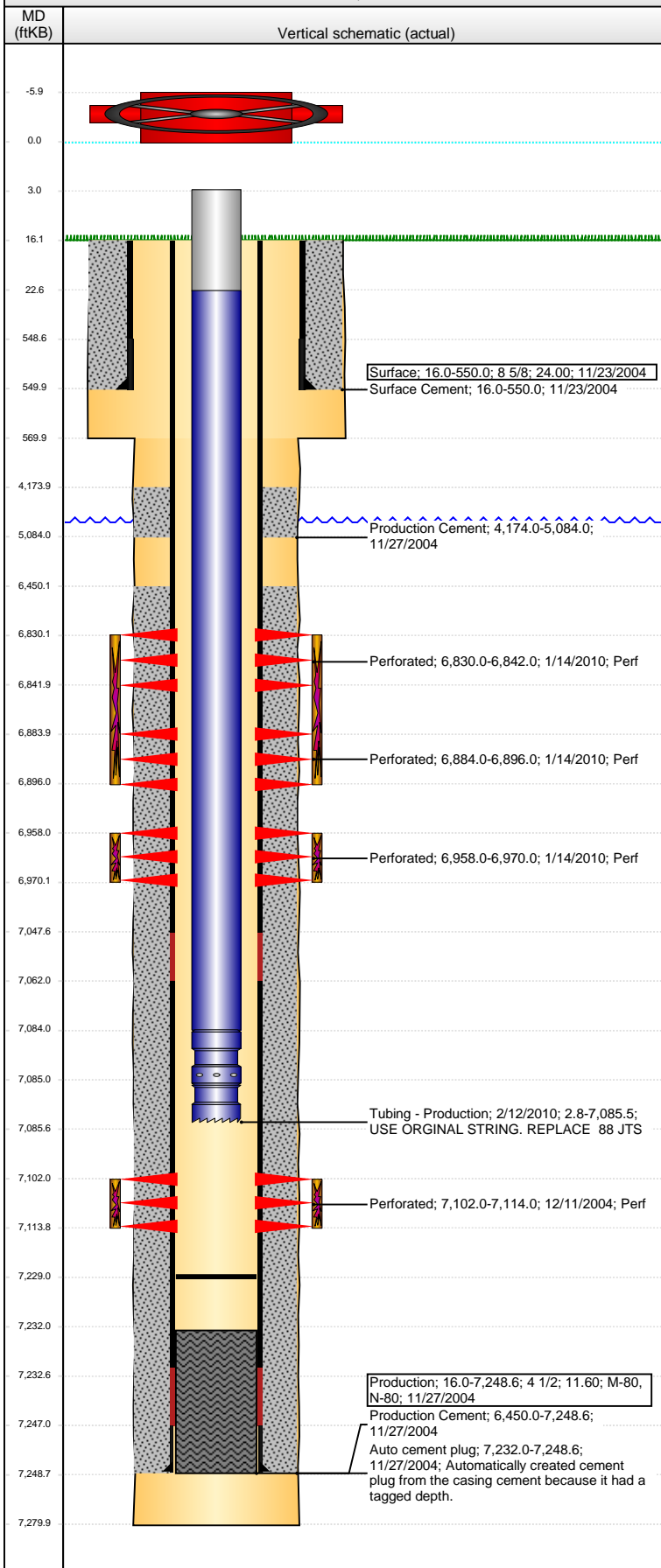


Well Name: **OCOMA G35-23**

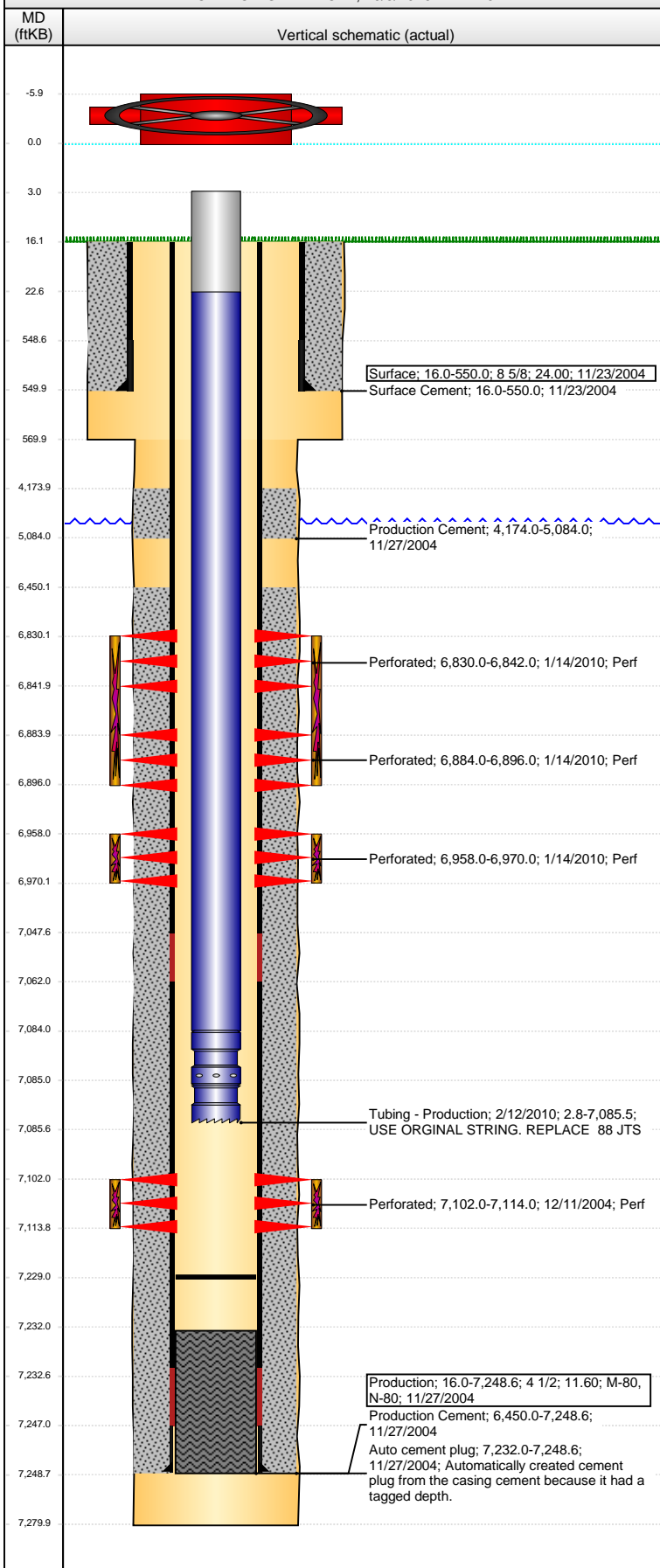
VERTICAL - ORIGINAL HOLE, 10/5/2016 11:44:42 AM



Well Header								
API 05-123-21980		Business Unit DJ BASIN		District 15		Well Config VERTICAL		
Original KB Elevation (ft) 4,811		KB - GL / MSL (ftKB) 16.00		Spud Date 11/22/2004		P & A Date		
Comment								
Directions To Well WCR 40 & WCR 47, SOUTH 0.9 MILES, WEST AND NORTH 0.9 MILES AROUND CROP CIRCLE, EAST 0.3 MILES INTO LOCATION. NEXT TO CENTER PIVOT.								
Congressional Location								
Quarter 3	Quarter 4 SE	Section 35	Township 4	Twtnshp N/S Dir N	Range 65	Range E/W Dir W		
Bottom Hole Location								
North-South Distance (ft)		From N or S Line		East-West Distance (ft)		From E or W Line		
Plug Back Total Depths								
Date	Depth (ftKB)	Method		Com				
11/27/2004	7,232.0	CASING TALLY		CBL CLEAN OUT W/ BIT, SCRAPER AND 223 JTS				
12/10/2004	7,199.0	CASED HOLE LOG						
1/6/2010	7,229.0	TUBING TALLY						
Wellbore Sections								
Section Des		Size (in)		Act Top, MD (ftKB)		Act Btm, MD (ftKB)		
SURFACE		12 1/4		16		570		
PRODUCTION		7 7/8		570		7,280		
Zone Statuses								
Zone Name	Status Date	Status	Fluid Type	Job	Prod Method			
CODELL	12/17/2004	PR	Oil	DRILLING/CO...				
NIOBRARA	1/23/2010	PR		RECOMPLETI...				
Casing Strings								
Surface, 550.0ftKB								
Casing Description Surface		Run Date 11/23/2004	OD (in) 8 5/8	Wt/Len (l... 24.00	Grade	Top, MD (ft... 16.0	MD (ftKB) 550.0	
Production, 7,248.6ftKB								
Casing Description Production		Run Date 11/27/2004	OD (in) 4 1/2	Wt/Len (l... 11.60	Grade M-80	Top, MD (ft... 16.0	MD (ftKB) 7,248.6	
Cement								
Description Surface Cement				Top Depth (ftKB) 16.0		Bottom Depth (ftKB) 550.0		
Description Production Cement				Top Depth (ftKB) 4,174.0		Bottom Depth (ftKB) 5,084.0		
Description Production Cement				Top Depth (ftKB) 6,450.0		Bottom Depth (ftKB) 7,248.6		
Tubing Strings								
Tubing Description Tubing - Production		Run Date 12/13/2004	String... 2 3/8	ID (in) 1.995	Wt (lb/ft) 4.70	Grade J-55	Len (ft) 7,076.00	Set De...
Tubing Description Tubing - Production		Run Date 2/12/2010	String... 2 3/8	ID (in) 1.995	Wt (lb/ft) 4.70	Grade J-55	Len (ft) 7,082.74	Set De...
Tubing Components								
Item Des	OD (in)	Wt (lb/ft)	Grade	Jts	Len (ft)	Btm (ftKB)	Btm (TVD) (ftKB)	
Tubing Pup Joint	2 3/8	4.70	J-55	2	20.00	22.8		
Tubing	2 3/8	4.70	J-55	218	7,061.14	7,083.9		
Seal Nipple	2 3/8			1	1.10	7,085.0		
Notched collar	2 3/8			1	0.50	7,085.5		
Perforation Data								
Zone	Bnch/St g	Entered Shot Total	Top (ftKB)		Btm (ftKB)		Date	
NIOBRARA, ORIGINAL HOLE	A	24	6,830.00		6,842.00		1/14/2010	
NIOBRARA, ORIGINAL HOLE	B	24	6,884.00		6,896.00		1/14/2010	
NIOBRARA, ORIGINAL HOLE			6,958.00		6,970.00		1/14/2010	
CODELL, ORIGINAL HOLE		48	7,102.00		7,114.00		12/11/2004	

**Well Name: OCOMA G35-23**

VERTICAL - ORIGINAL HOLE, 10/5/2016 11:44:45 AM



## Stimulations & Treatments

Date	Zone	Primary Job Type
12/16/2004	CODELL, ORIGINAL HOLE	DRILLING/COMPLETION - ORIGINAL
Technical Result	Tech Result Details	Tech Result Note

Comment

Date	Zone	Primary Job Type
1/14/2010	NIOBRARA, ORIGINAL HOLE	RECOMPLETION
Technical Result	Tech Result Details	Tech Result Note

Comment  
(NIOBRARA C): HAD A FEW ISSUES SUCKING AIR STARTED ACID BEFORE GOING TO FLUSH. JOB WENT WELL WITH NO ISSUES TO REPORT.

Date	Zone	Primary Job Type
1/14/2010	NIOBRARA, ORIGINAL HOLE	RECOMPLETION
Technical Result	Tech Result Details	Tech Result Note

Comment  
(NIOBRARA AB): SHUT DOWN 1560 BBLs INTO JOB BEFORE STARTING SAND BECAUSE PH WAS LESS THAN 3 DURING ALL OF X-LINK PAD. DOWN 1 HOUR TO FIGURE OUT WHY PH IN HYDRATION UNIT WAS AT 3.0. SOMEHOW ACID GOT INTO HYDRATION UNIT. TESTING CROSSLINK AND RESUMED THE JOB WITH A HIGH BUFFER LOADING UNTIL THE PH RETURNED TO NORMAL.

## Other In Hole

Run Date	Des	OD (in)	Top (ftKB)	Btm (ftKB)

## Logs

Date	Type	Top, MD (ftKB)	Btm, MD (ftKB)
11/26/2004	COMPENSATED DENSITY	4,350.0	7,256.0
11/26/2004	INDUCTION	550.0	7,276.0
12/10/2004	CBL/CCL/GR	3,950.0	7,196.0
8/7/2014	GYRO	10.0	7,000.0