

HALLIBURTON

iCem[®] Service

WPX ENERGY ROCKY MOUNTAIN LLC-EBUS

For: Mark Mewshaw

Date: Wednesday, June 22, 2016

GM 411-9 Surface

API # 05-045-22527-00

Sincerely,
Grand Junction Cement Engineering

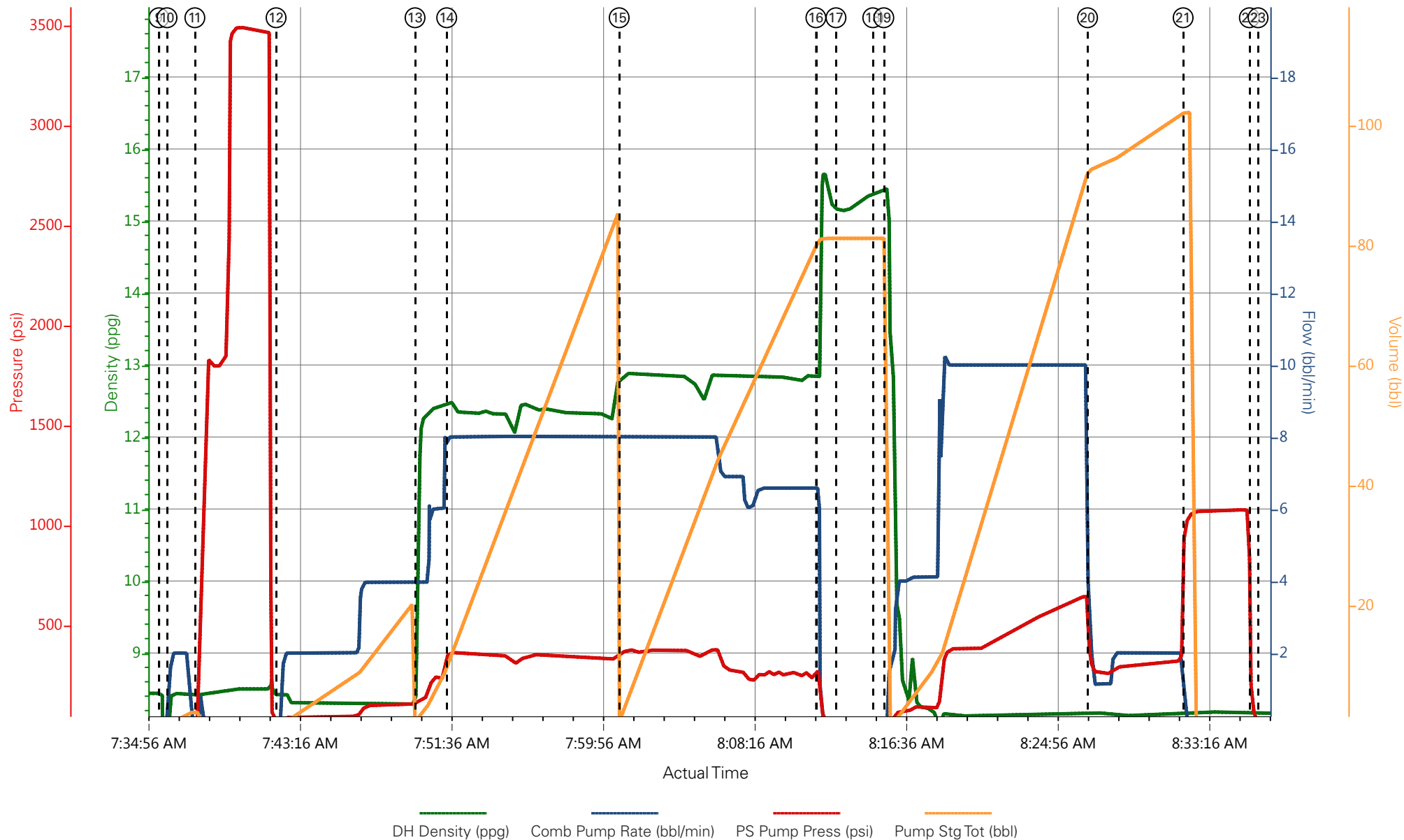
1.0 Real-Time Job Summary

1.1 Job Event Log

Type	Seq. No.	Graph Label	Date	Time	Source	DH Density (ppg)	Comb Pump Rate (bbl/min)	PS Pump Press (psi)	Pump Stg Tot (bbl)	Comments
Event	1	Call Out	6/22/2016	00:00:00	USER					REQUESTER ON LOCATION @ 05:30
Event	2	Pre-Convoy Safety Meeting	6/22/2016	01:45:00	USER					ALL HES PRESENT
Event	3	Crew Leave Yard	6/22/2016	02:00:00	USER					1 550 PU, 2 660 BULK TRUCKS AND 1 ELITE PUMP. ALL TRUCKS LEFT THE YARD TOGETHER
Event	4	Arrive At Loc	6/22/2016	03:30:00	USER					ARRIVED ON LOCATION 2 HOURS EARLY AND WIRELINE WAS IN THE HOLE. LEFT TRUCKS AT PARKING AREA UNTIL LOCATION WAS CLEAR
Event	5	Assessment Of Location Safety Meeting	6/22/2016	03:40:00	USER					MET WITH CO REP AND WENT OVER JOB PROCEDURES AND NUMBERS. OFFERED/RECIEVED SDS. DID A WALKAROUND OF LOCATION. COLLECTED WATER SAMPLE (PH7, CHLO, TEMP 68F) WIRELINE WAS DONE AT 0430 AND CASING CREW STARTED RIGGING UP
Event	6	Pre-Rig Up Safety Meeting	6/22/2016	04:30:00	USER					ALL HES PRESENT. BROUGHT TRUCKS ON TO LOCATION AND RIGGED UP WHAT WE COULD
Event	7	Rig-Up Equipment	6/22/2016	04:45:00	USER					
Event	8	Pre-Job Safety Meeting	6/22/2016	07:15:00	USER					MET WITH RIG CREW TO GO OVER JOB. ALL HES PRESENT
Event	9	Start Job	6/22/2016	07:35:41	COM5					TD 1315', TP 1305', SJ 46', CS 9.625" 32.3 # H-40, OH 13.5", MW 9.7 PPG, VIS 55 HOT 779', TOT 526' CEMENT CALCULATED TO SURFACE
Event	10	Prime Pumps	6/22/2016	07:36:08	USER	8.34	2	50	2	2 BBLS FRESH WATER
Event	11	Test Lines	6/22/2016	07:37:39	COM5			3470		TESTED TO 3470 KO'S FUNCTIONING TESTED GOOD
Event	12	Pump Spacer 1	6/22/2016	07:42:07	COM5	8.34	4	130	20	20 BBLS FRESH WATER
Event	13	Pump Lead Cement	6/22/2016	07:49:46	COM5	12.3	8	375	78.4	185 SKS VariCem GJ1 (78.4 BBLS) 12.3PPG, 2.38 FT3/SK, 13.77 GAL/SK

Event	14	Check weight	6/22/2016	07:51:30	COM5	12.3				12.3 PPG
Event	15	Pump Tail Cement	6/22/2016	08:00:59	COM5	12.8	8	390	71.4	190 SKS VariCem GJ1 (71.4 BBLS) 12.8PPG, 2.11 FT3/SK, 11.78 GAL/SK
Event	16	Shutdown	6/22/2016	08:11:48	USER					END OF CEMENT
Event	17	Wash On Top	6/22/2016	08:12:55	USER	8.34				10 BBLS FRESH WATER
Event	18	Drop Top Plug	6/22/2016	08:14:56	COM5					PLUG WENT. WITNESSED BY DRILLER
Event	19	Pump Displacement	6/22/2016	08:15:32	COM5	8.34	10	670	99.1	99.1 BBLS FRESH WATER
Event	20	Slow Rate	6/22/2016	08:26:45	COM5	8.34	2	270	89	SLOWED TO 2 BBLS/MIN TO LAND PLUG
Event	21	Bump Plug	6/22/2016	08:32:00	COM5	8.34	2	350	99.1	BUMPED AT 350 PSI AND WENT UP TO 1060 PSI
Event	22	Check Floats	6/22/2016	08:35:39	COM5	8.34		350		FLOATS HELD. .5 BBLS FLOWBACK TO TRUCK
Event	23	End Job	6/22/2016	08:36:07	USER					23 BBLS OF GOOD CEMENT TO SURFACE. GREAT RETURNS THROUGHOUT JOB
Event	24	Pre-Rig Down Safety Meeting	6/22/2016	08:40:00	USER					ALL HES PRESENT
Event	25	Rig Down Lines	6/22/2016	08:50:00	USER					
Event	26	Pre-Convoy Safety Meeting	6/22/2016	09:30:00	USER					ALL HES PRESENT
Event	27	Crew Leave Location	6/22/2016	09:45:00	USER					THANK YOU FOR USING HALLIBURTON CEMENT. CLIFF SPARKS AND CREW

WPX FEDERAL GM 411-9 9.625" SURFACE



- | | | | | | | | |
|-----------------------------|-------------------|---|--------------------------|---------------|-----------------|--------------------|-------------|
| ① Call Out | ③ Crew Leave Yard | ⑤ Assessment Of Location Safety Meeting | ⑦ Rig-Up Equipment | ⑨ Start Job | ⑪ Test Lines | ⑬ Pump Lead Cement | ⑮ Pump Tail |
| ② Pre-Convoy Safety Meeting | ④ Arrive At Loc | ⑥ Pre-Rig Up Safety Meeting | ⑧ Pre-Job Safety Meeting | ⑩ Prime Pumps | ⑫ Pump Spacer 1 | ⑭ Check weight | ⑯ Shutdown |

III

HALLIBURTON | iCem® Service

Created: 2016-06-22 04:23:53, Version: 4.2.393

Edit

Customer: WPX ENERGY ROCKY MOUNTAIN LLC-EBUS

Job Date: 6/22/2016 6:38:57 AM

Well: 411-9

Representative: BOBBY BROWN

Sales Order #: 903378918

ELITE 4 : CLIFF SPARKS / BRANDON REEVES

WPX FEDERAL GM 411-9 9.625" SURFACE

