

SlimPulse - Gamma Ray  
1 in / 100 ft True Vertical Depth  
Real-Time Log

Schlumberger

Company:

Noble Energy Inc.

Well: NUGENT LD06-665

Field: Wildcat

County: Weld

State: Colorado

Country: United States of America

Section: 5 UWID: 05-123-40808

Township: 9N Rig Name: Helmerich & Payne 517

Range: 58W Rig Type: Land - Top Drive

FL: NAD83 Colorado State Plane, Northern Zone, US Feet

FL1: Northing: 1,531,566;373 ftUS

FL2: Easting: 3,448,532.706 ftUS

Log Measured From: - Drill Floor: 4791.00 ft  
Ground Level: 4761.00 ft

Permanent Datum: - Mean Sea Level

Acquisition Dates: 23-Jul-2016

Log Interval: 1940.62(ft)TVD -- 5843.24(ft)TVD

Index Types: True Vertical Depth

Index Scales: 1:1200 1" / 100'

Depth Source: Driller's Depth

Depth Sensor: 3rd Party Depth

Print Type: Field

Spud Date: 21-JUN-2016

Other Services:

Directional Drilling

Direction and Inclination

Disclaimer

THE USE OF AND RELIANCE UPON THIS RECORDED-DATA BY THE HEREIN NAMED COMPANY (AND ANY OF ITS AFFILIATES, PARTNERS, REPRESENTATIVES, AGENTS, CONSULTANTS AND EMPLOYEES) IS SUBJECT TO THE TERMS AND CONDITIONS AGREED UPON BETWEEN SCHLUMBERGER AND THE COMPANY, INCLUDING: (a) RESTRICTIONS ON USE OF THE RECORDED-DATA; (b) DISCLAIMERS AND WAIVERS OF WARRANTIES AND REPRESENTATIONS REGARDING COMPANY'S USE AND RELIANCE UPON THE RECORDED-DATA; AND (c) CUSTOMER'S FULL AND SOLE RESPONSIBILITY FOR ANY INFERENCE DRAWN OR DECISION MADE IN CONNECTION WITH THE USE OF THIS RECORDED-DATA.

Contents

- Header
- Disclaimer
- Contents
- Well Composite
  - Integration Summary
  - Software Version
  - Composite Summary
  - Log ( 1 in TVD SlimPulse Gamma Ray RT )
  - Parameter Listing
- Tail

Well Composite

Software Version

Acquisition System	Version
Maxwell 2016 SP2	6.2.64464.3100

Composite Summary

Run Name	Pass Objective	Direction	Top	Bottom	Start	Stop	Include Parallel Data
RUN001	Drilling	Down	1940.67 ft	2024.50 ft	23-Jul-2016 2:37:36 AM	23-Jul-2016 4:21:36 AM	Yes
RUN002	Drilling	Down	2023.67 ft	5100.17 ft	23-Jul-2016 7:39:27 AM	24-Jul-2016 5:23:26 AM	Yes
RUN003	Drilling	Down	5099.25 ft	5679.25 ft	24-Jul-2016 5:51:36 AM	25-Jul-2016 1:52:03 PM	Yes
RUN004	Drilling	Down	5678.67 ft	6276.50 ft	25-Jul-2016 11:25:29 PM	26-Jul-2016 2:45:04 PM	Yes
RUN005	Drilling	Down	6275.58 ft		26-Jul-2016 5:44:20 PM		No

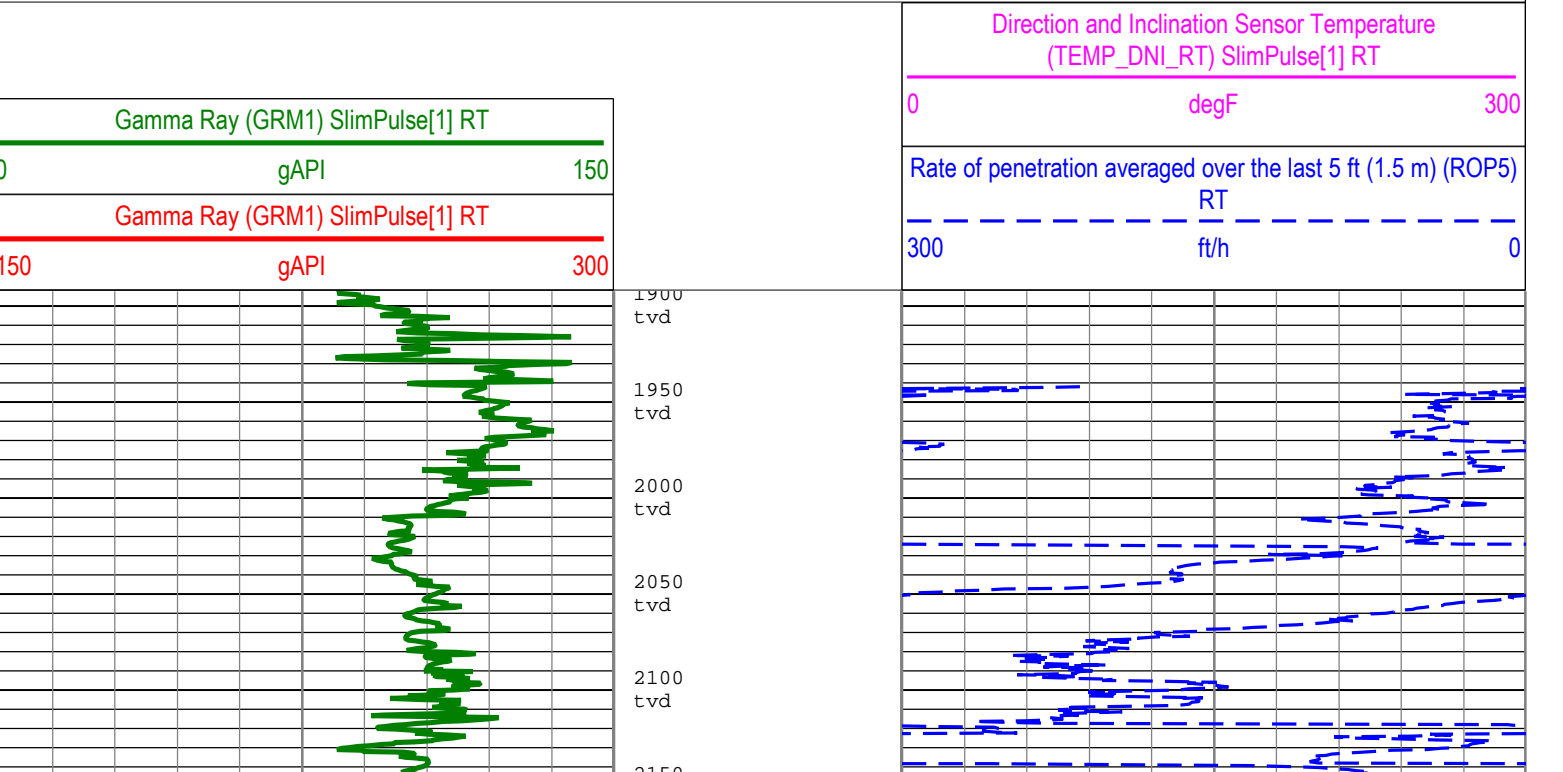
All depths are referenced to toolstring zero

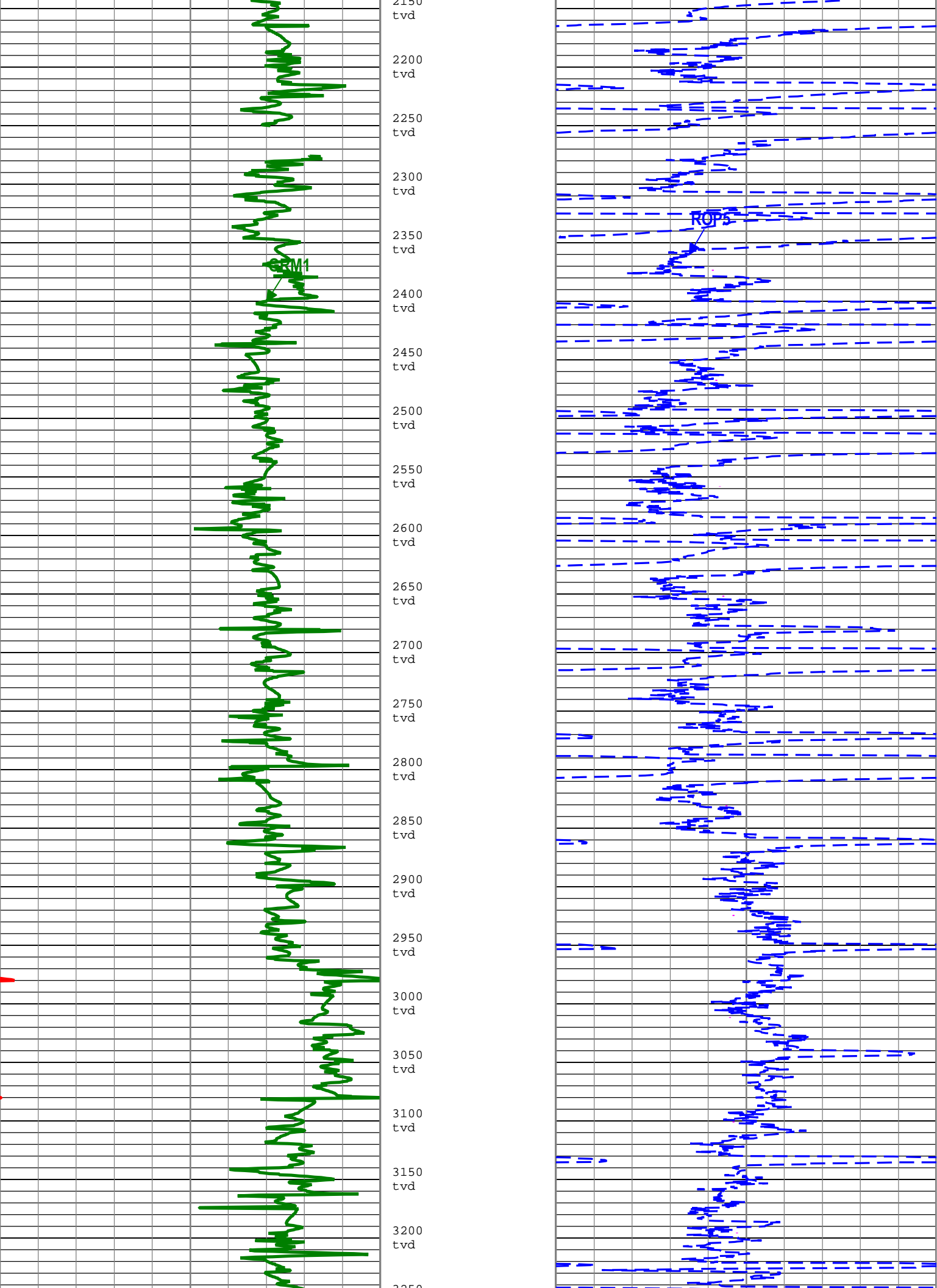
Log

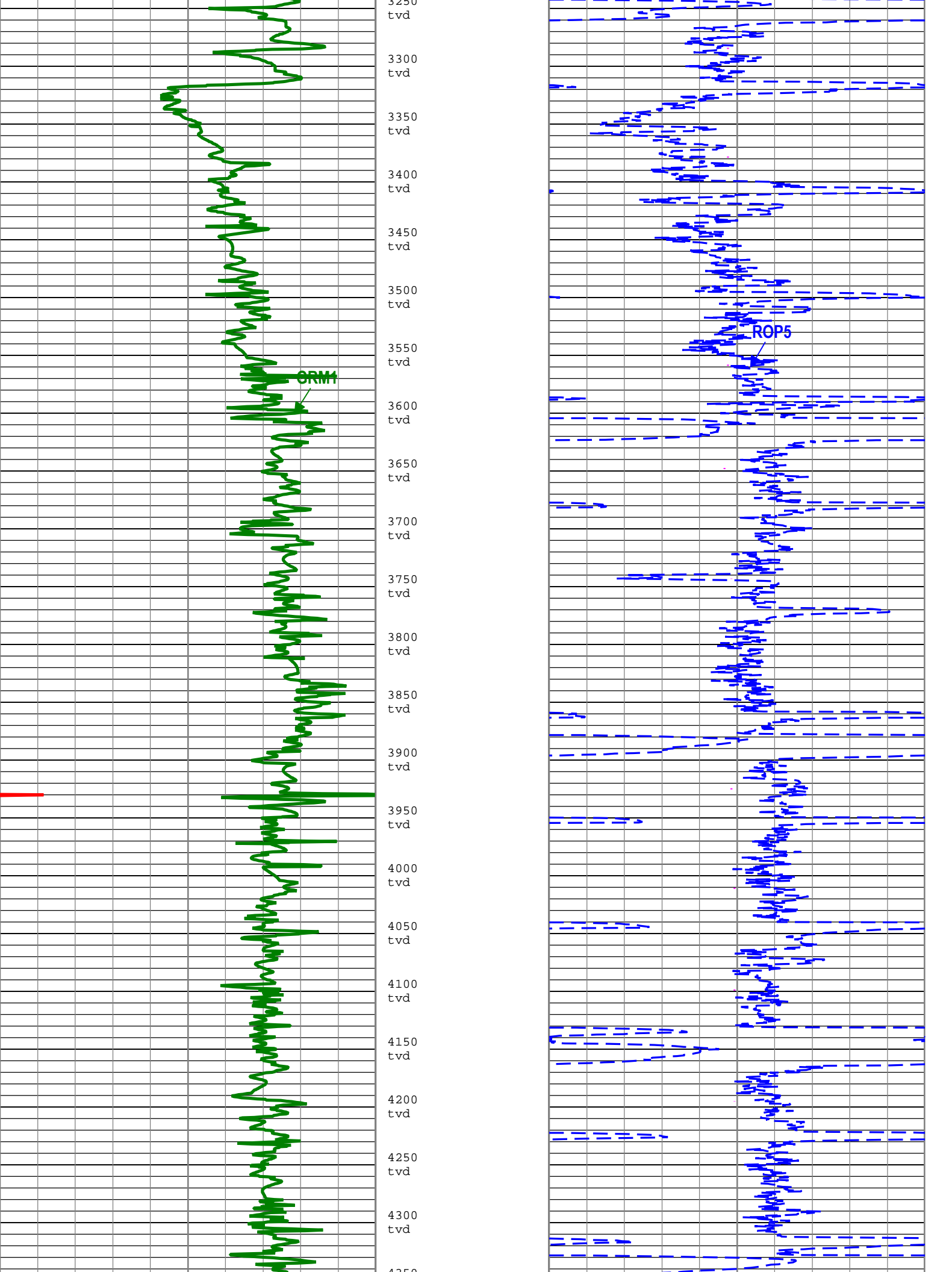
Company: Noble Energy Inc.      Well:NUGENT LD06-665  
Well Composite:S367

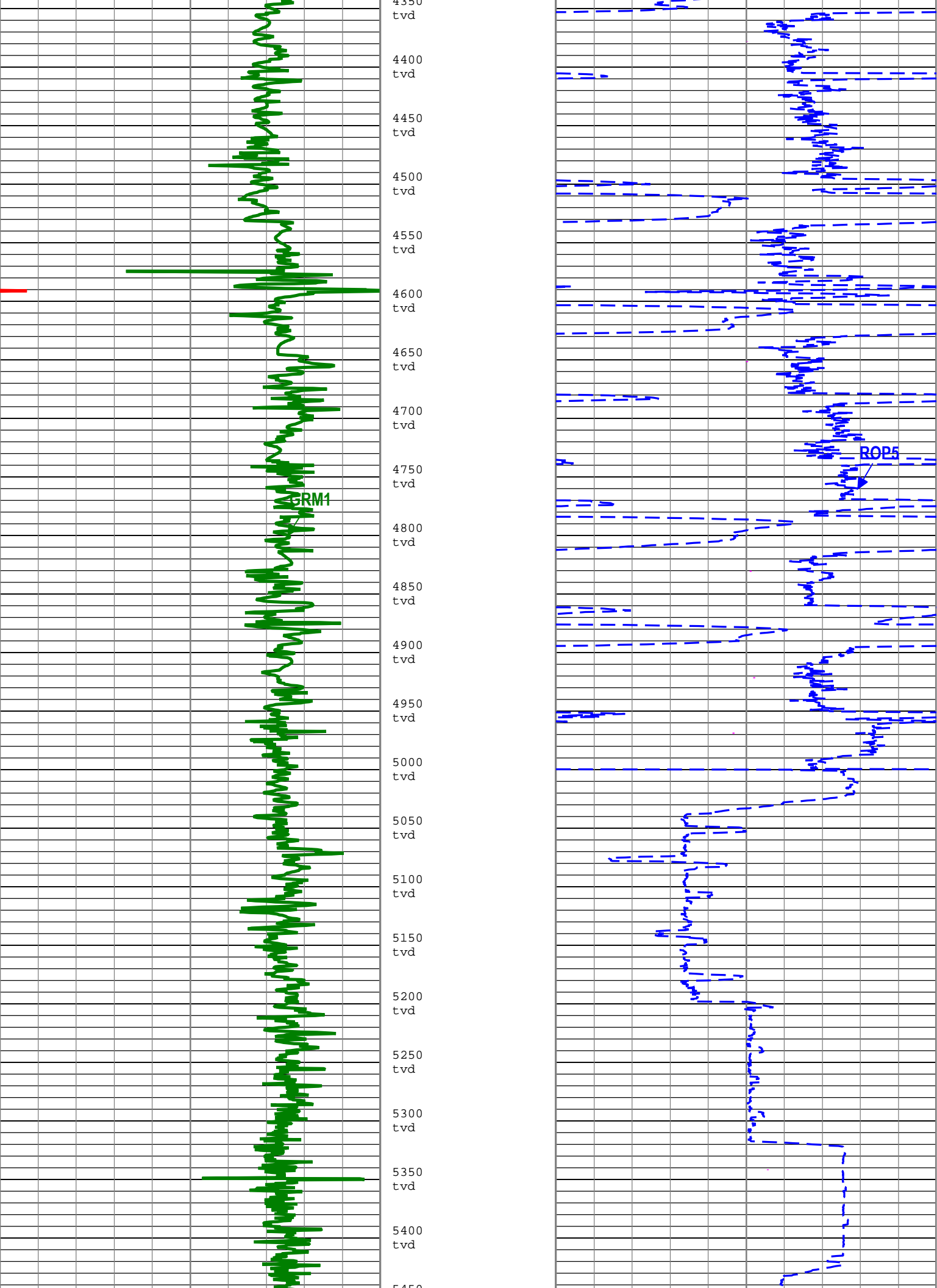
Description: SlimPulse Gamma Ray 1    Format: Log ( 1 in TVD SlimPulse Gamma Ray RT )    Index Scale: 1 in per 100 ft    Index Unit: ft    Index Type: TVD    Creation Date: 29-Jul-2016 20:33:13

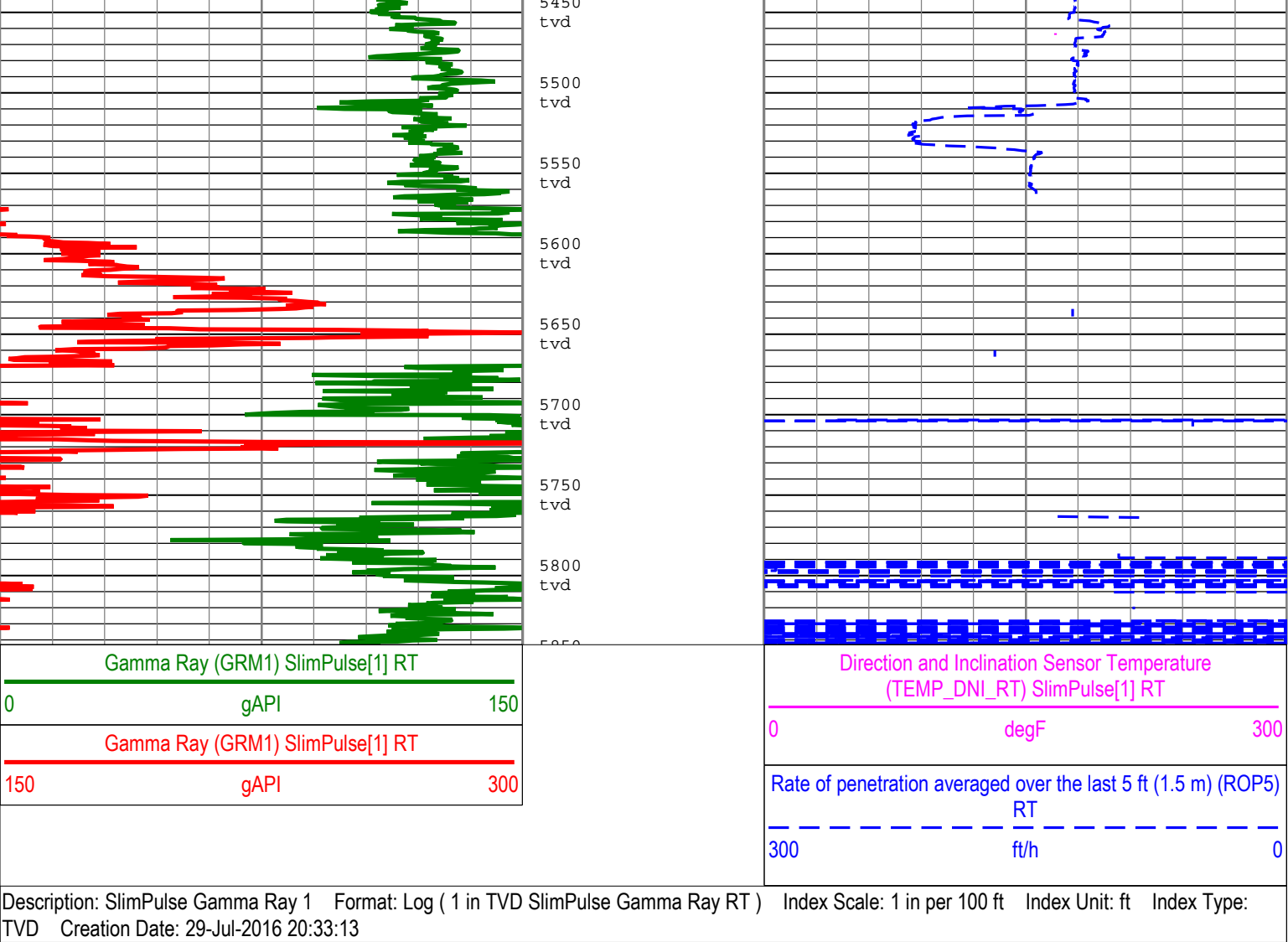
Channel	Source	Sampling
GR	SlimPulse[1]:SlimPulse[1]:SPEC[1]	6in - RT
ROP5	DRILLING_SURFACE	6in - RT
TEMP_DNI	SlimPulse[1]:SlimPulse[1]	6in - RT











## Channel Processing Parameters

### RUN001: Parameters

Parameter	Description	Tool	Value	Unit
BS	Bit Size	DNMSESSION	Depth Zoned	in
DFD	Drilling Fluid Density	Borehole	10	lbm/gal

### RUN001Depth Zoned Parameters

Parameter	Value	Start ( ft )	Stop ( ft )
BS	12.25	1892.54	1940.04
BS	8.5	1940.04	

All depth are actual.

### RUN002: Parameters

Parameter	Description	Tool	Value	Unit
BS	Bit Size	DNMSESSION	Depth Zoned	in
DFD	Drilling Fluid Density	Borehole	10	lbm/gal

### RUN002Depth Zoned Parameters

Parameter	Value	Start ( ft )	Stop ( ft )
BS	12.25	1932.37	1940.04
BS	8.5	1940.04	

All depth are actual.

### RUN003: Parameters

Parameter	Description	Tool	Value	Unit
-----------	-------------	------	-------	------

BS	Bit Size	DNMSESSION	8.5	in
DFD	Drilling Fluid Density	Borehole	10	lbm/gal

## RUN004: Parameters

Parameter	Description	Tool	Value	Unit
BS	Bit Size	DNMSESSION	8.5	in
DFD	Drilling Fluid Density	Borehole	10	lbm/gal

## RUN005: Parameters

Parameter	Description	Tool	Value	Unit
BS	Bit Size	DNMSESSION	8.5	in
DFD	Drilling Fluid Density	Borehole	10	lbm/gal

## Tool Control Parameters

<b>Company:</b>	Noble Energy Inc.
<b>Well:</b>	NUGENT LD06-665
<b>Field:</b>	Wildcat
<b>County:</b>	Weld
<b>State:</b>	Colorado
<b>Country:</b>	United States of America



**Schlumberger**

**SlimPulse - Gamma Ray**  
**1 in / 100 ft True Vertical Depth**  
**Real-Time Log**