

Kyle E. Rutz—On behalf of L&L, Inc.
Colorado Licensed Professional Land Surveyor No. 38307
DATE: 7/29/2015
PROJECT#: 2015083

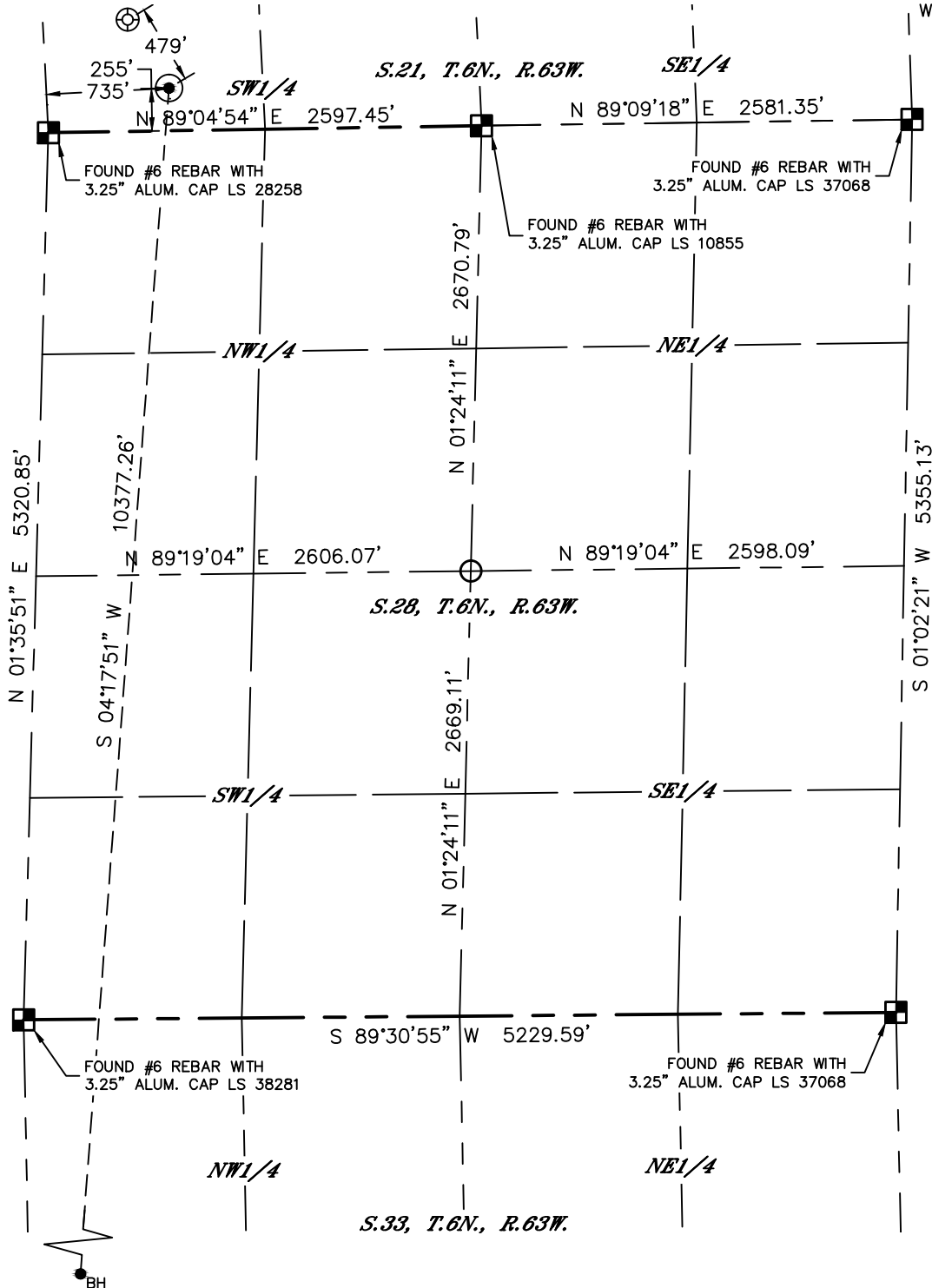


Lat40°, Inc. 6250 W. 10th Street, Unit 2, Greeley, CO 970-515-5294

WELL LOCATION CERTIFICATE

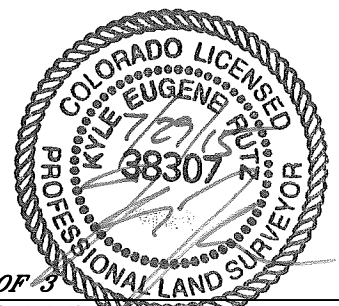
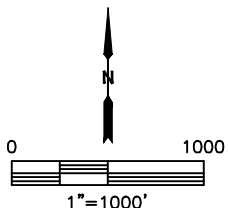
WELLS RANCH STATE AA33-790

SECTION: 21
TOWNSHIP: 6N
RANGE: 63W
6TH. P.M.
WELD COUNTY, CO



LEGEND

- = ALIQUOT MONUMENT AS DESCRIBED
- = CALCULATED POSITION
- = SURFACE HOLE LOCATION (SHL)
- ▲ = ENTRY POINT LOCATION (EP)
- _{BH} = BOTTOM HOLE LOCATION (BHL)
- ⊙ = EXISTING WELL
- ⊗ = ABANDONED WELL



SHEET 2 OF 3

Kyle E. Rutz—On behalf of Lat40°, Inc.
Colorado Licensed Professional Land Surveyor No. 38307
DATE: 7/29/2015
PROJECT#: 2015083

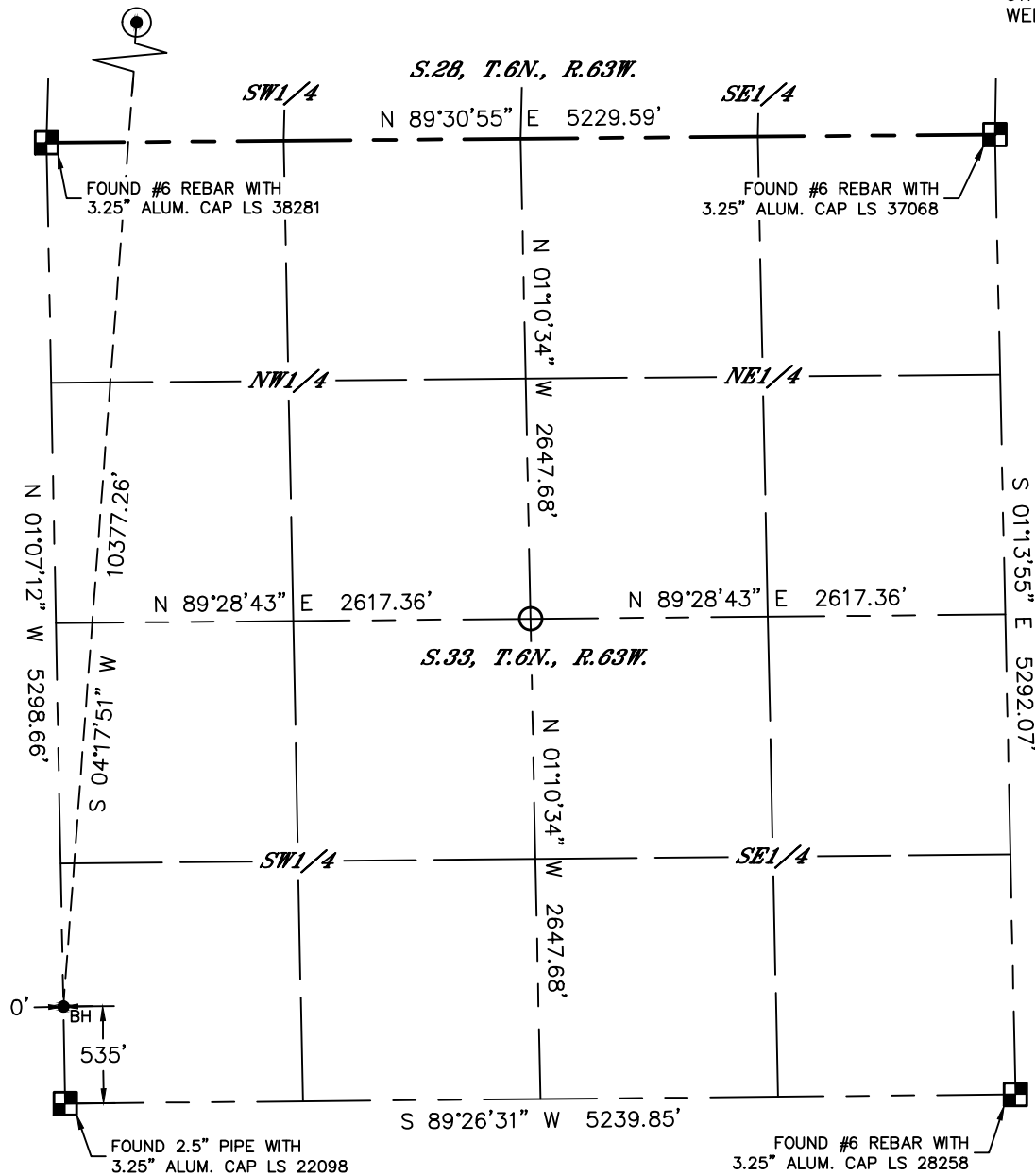


Lat40°, Inc. 6250 W. 10th Street, Unit 2, Greeley, CO 970-515-5294

WELL LOCATION CERTIFICATE

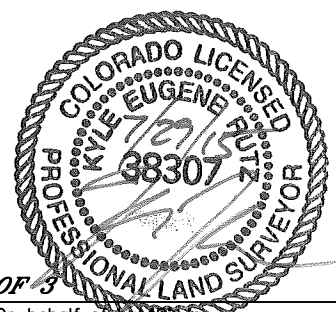
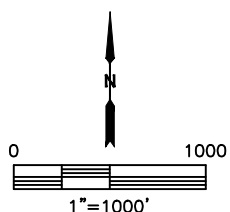
WELLS RANCH STATE AA33-790

SECTION: 21
TOWNSHIP: 6N
RANGE: 63W
6TH. P.M.
WELD COUNTY, CO



LEGEND

- = ALIQUOT MONUMENT AS DESCRIBED
- = CALCULATED POSITION
- = SURFACE HOLE LOCATION (SHL)
- ▲ = ENTRY POINT LOCATION (EP)
- _{BH} = BOTTOM HOLE LOCATION (BHL)
- ⊗ = EXISTING WELL
- ⊗ = ABANDONED WELL



SHEET 3 OF 3

Kyle E. Rutz—On behalf of Lat40, Inc.
Colorado Licensed Professional Land Surveyor No. 38307
DATE: 7/29/2015
PROJECT#: 2015083