

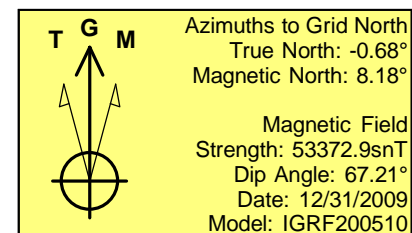
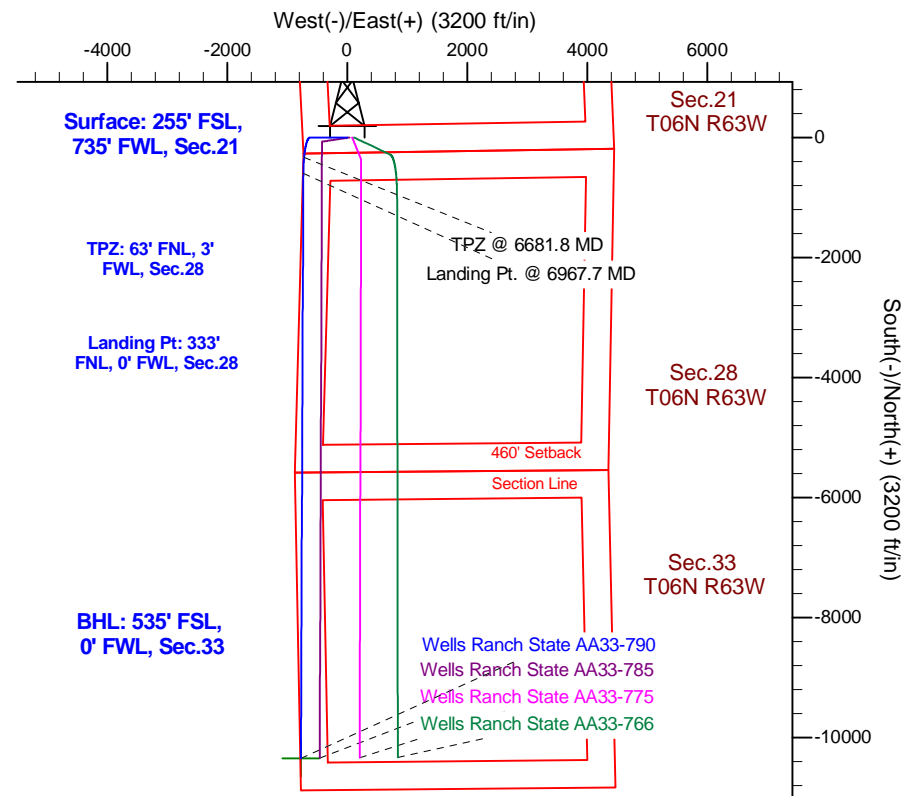
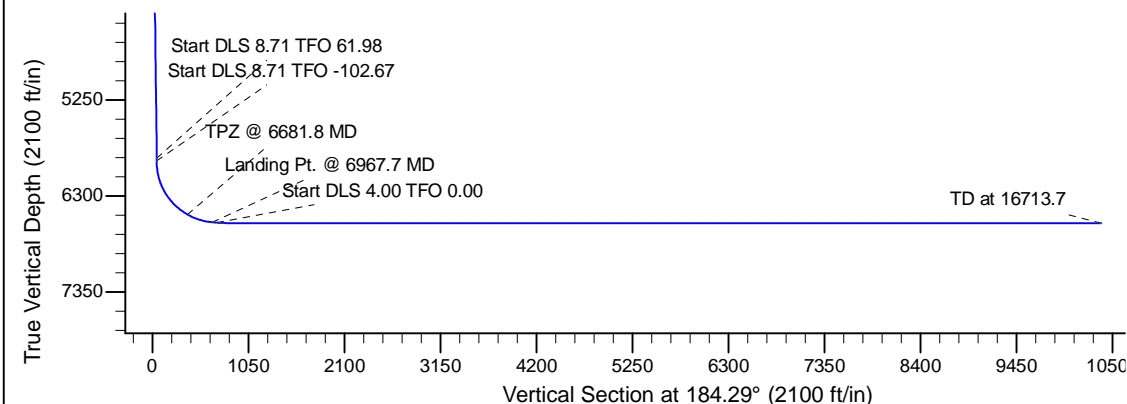
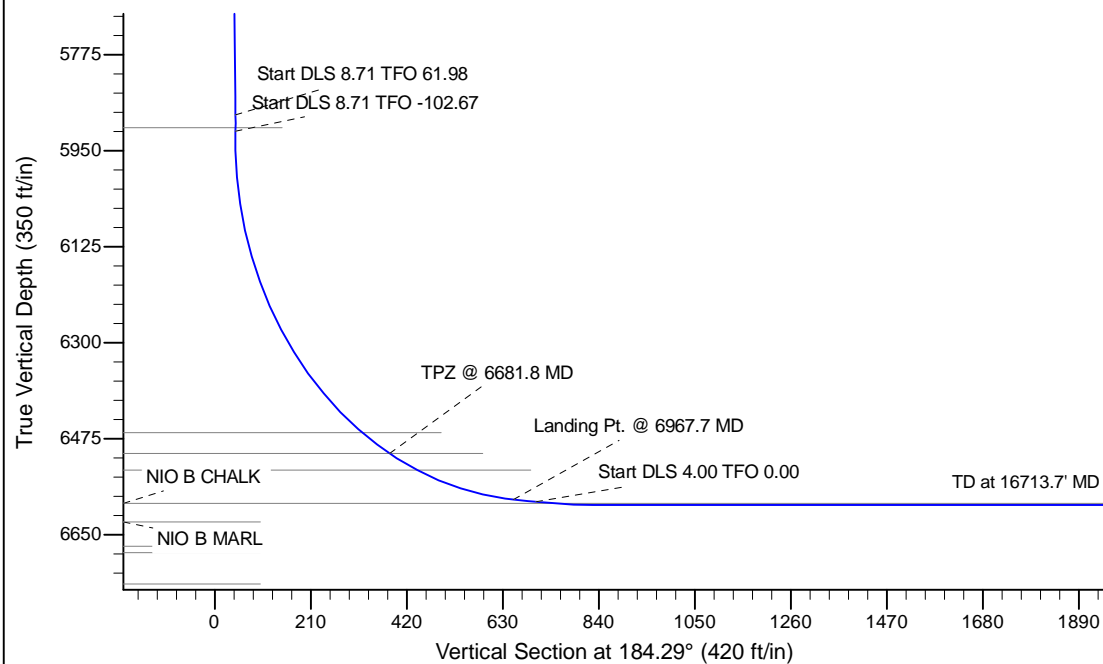
Project: Wattenberg Field
 Site: AA (Sec.21-T06N-R63W) Weld County, CO
 Well: Wells Ranch State AA33-790
 Wellbore: Original Drilling
 Design: APD - Rev 1

Northern Region Drilling - Working

Geodetic System: US State Plane 1983
 Datum: North American Datum 1983
 Ellipsoid: GRS 1980
 Zone: Colorado Northern Zone
 System Datum: Mean Sea Level

SECTION DETAILS

Sec	MD	Inc	Azi	TVD	+N/-S	+E/-W	Dleg	TFace	VSec	Target
1	0.0	0.00	0.00	0.0	0.0	0.0	0.00	0.00	0.0	
2	2000.0	0.00	0.00	2000.0	0.0	0.0	0.00	0.00	0.0	
3	2475.0	9.50	270.00	2472.8	0.0	-39.3	2.00	270.00	2.9	
4	5934.6	9.50	270.00	5885.0	0.0	-610.3	0.00	0.00	45.7	
5	5964.6	10.97	282.19	5914.5	0.6	-615.5	8.71	61.98	45.5	
6	6967.7	85.00	180.24	6586.0	-600.0	-735.0	8.71	-102.67	653.3	
7	7017.7	85.00	180.24	6590.4	-649.8	-735.2	0.00	0.00	703.0	
8	7142.7	90.00	180.24	6595.8	-774.6	-735.7	4.00	0.00	827.5	
9	16713.7	90.00	180.25	6596.0	-10345.5	-776.5	0.00	106.45	10374.6	Wells Ranch State AA33-790 BHL 535'FSL, 0'FWL



WELL DETAILS: Wells Ranch State AA33-790

Ground Level: 4701.0				
Northing	Easting	Latitude	Longitude	
0.0	0.0	1414168.68	3292658.30	40.465530 -104.448160

Plan: APD - Rev 1 (Wells Ranch State AA33-790/Original Drilling)

Created By: Shailey Jewell Date: 9:40, July 08 2016

OK to submit with 2A as per Noble Drilling
7/8/2016 9:44