

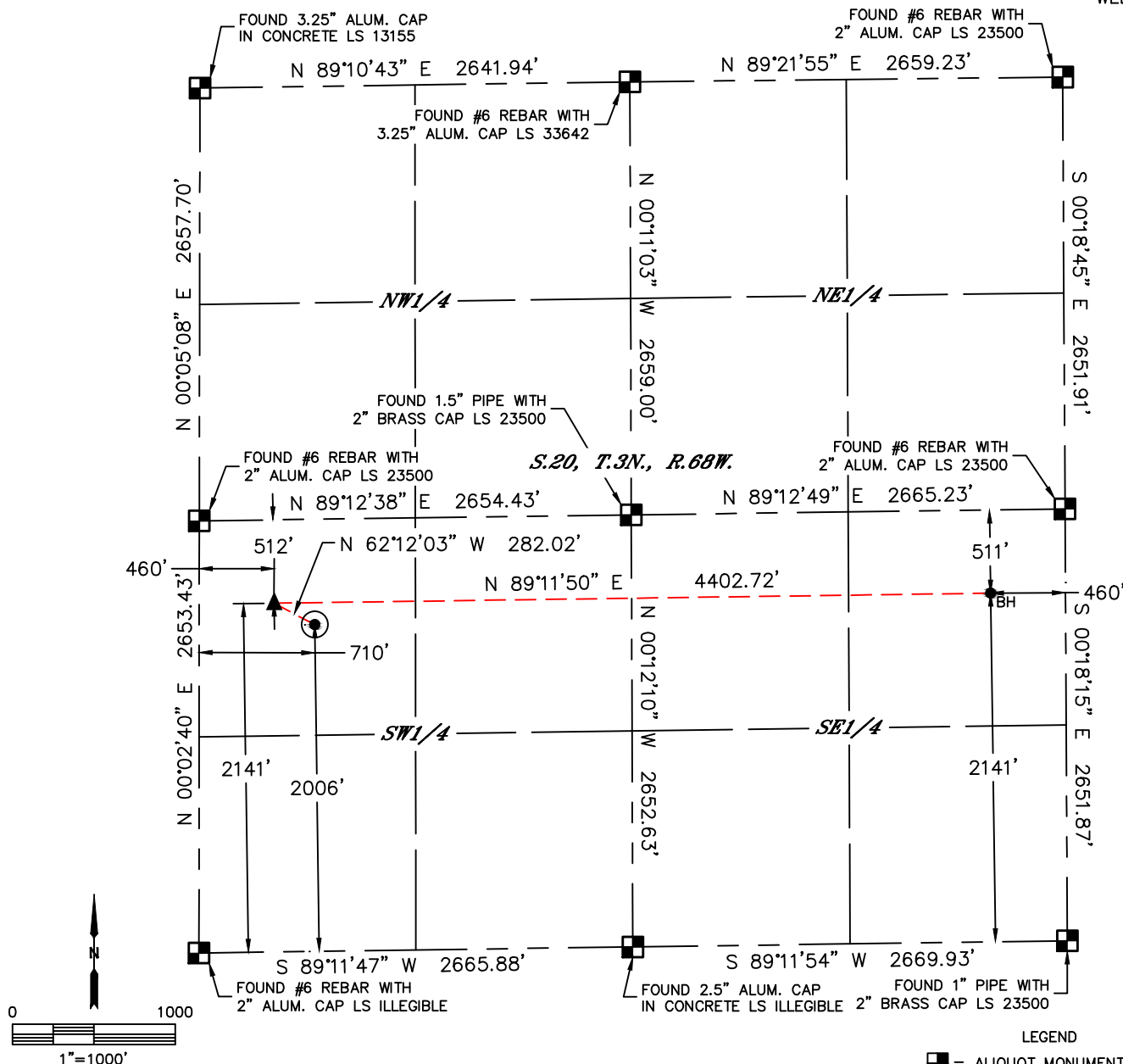


Lat40°, Inc. 6250 W. 10th Street, Unit 2, Greeley, CO 970-515-5294

# WELL LOCATION CERTIFICATE

HALEY 10HZ

SECTION: 20  
TOWNSHIP: 3N  
RANGE: 68W  
6TH. P.M.  
WELD COUNTY, CO



CLIENT: CUB CREEK ENERGY, LLC					LANDMAN: BOB GARDNER					
INSTRUMENT OPERATOR: BRIAN ROTTINGHAUS					SURVEY DATE: 2015/10/16		SURFACE USE: CROP LAND			
SHL FOOTAGE			SHL LAT °		SHL LONG °		SHL PDOP	SHL ELEV (FT.)	SHL 1/4/1/4	SHL S-T-R
2006	FSL	710	FWL	40.20936	-105.03382	1.2	5079	NWSW	20-3-68	

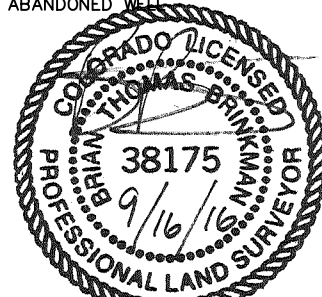
BHL FOOTAGE				BHL LAT°	BHL LONG °	BHL S-T-R	EP LAT°	EP LONG °	EP S-T-R
2141	FSL	460	FEL	40.20983	-105.01895	20-3-68	40.20972	-105.03471	20-3-68

EX. HALEY 3	50' SW
-------------	--------

NEAREST CULTURAL ITEMS	
BUILDING	±654' SW
BUILDING UNIT	±696' SW
HIGH OCCUPANCY BUILDING UNIT	5280'±
DESIGNATED OUTSIDE ACTIVITY AREA	5280'±
PUBLIC ROAD (COUNTY ROAD 3)	±703' W
ABOVE GROUND UTILITY	±671' W
RAILROAD	5280'±
PROPERTY LINE	±647' N

NOTE:  
1) Bearings shown are Grid Bearings of the Colorado State Plane Coordinate System, North Zone, North American Datum 1983. The lineal dimensions as contained herein are based upon the "U.S. Survey Foot."  
2) Distances to section lines measured at 90 degrees from said section lines.  
3) Ground elevations are based on an observed GPS elevation (NAVD 1988 DATUM).  
4) Latitude and Longitude shown are (NAD 83 DATUM).  
5) IMPROVEMENTS: See LOCATION DRAWING for all visible improvements within 500' of oil and gas location.  
6) This map does not represent a boundary survey.

- LEGEND
- = ALIQUOT MONUMENT AS DESCRIBED
  - = CALCULATED POSITION
  - = SURFACE HOLE LOCATION (SHL)
  - ▲ = ENTRY POINT LOCATION (EP)
  - BH = BOTTOM HOLE LOCATION (BHL)
  - ⊕ = EXISTING WELL
  - ⊗ = ABANDONED WELL



Brian T. Brinkman—On behalf of Lat40°, Inc.  
Colorado Licensed Professional Land Surveyor No. 38175  
DATE: 9/16/2016  
PROJECT#: 2015154

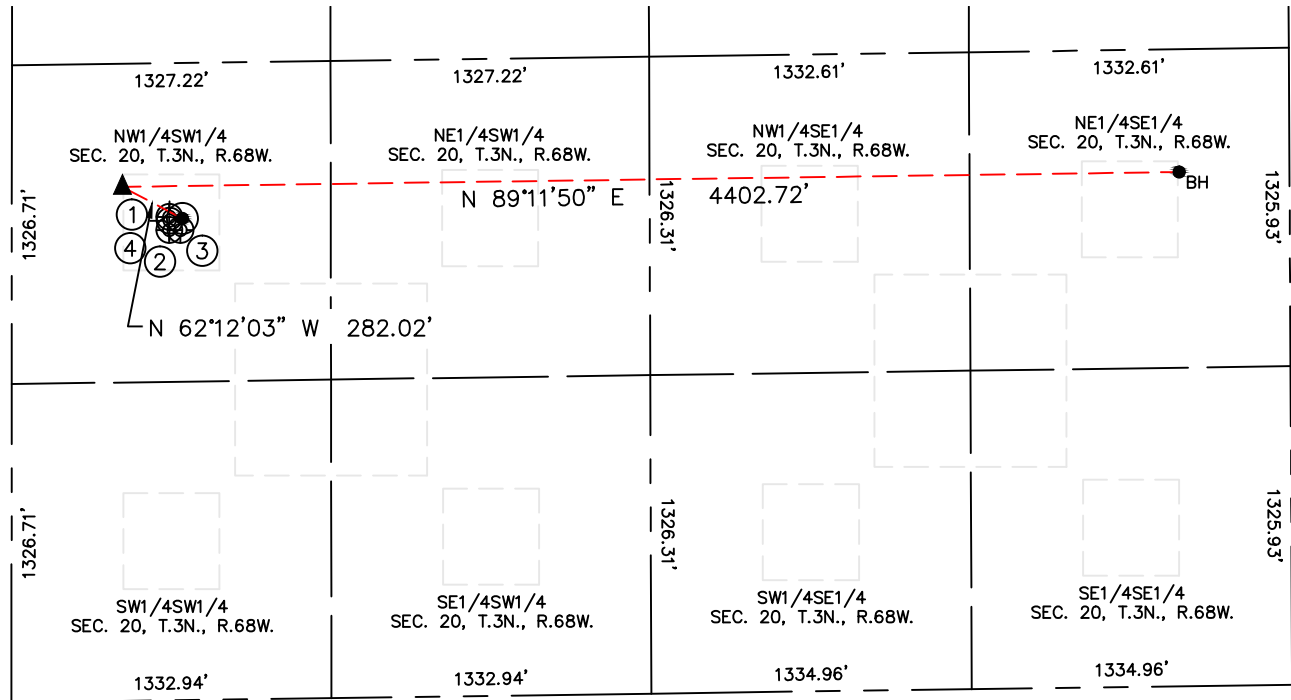


Lat40°, Inc. 6250 W. 10th Street, Unit 2, Greeley, CO 970-515-5294

## SITE SKETCH

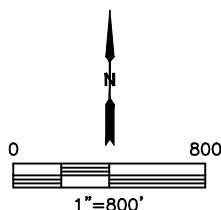
HALEY 10HZ

SECTION: 20  
TOWNSHIP: 3N  
RANGE: 68W  
6TH. P.M.  
WELD COUNTY, CO



WELL NO.	WELL NAME	SHL FOOTAGE				SHL LAT°	SHL LONG°	PDOP	ELEV (FT.)	1/4/1/4
1	HALEY 10	2013	FSL	656	FWL	40.20938	-105.03401	1.4	5079	NWSW
2	HALEY 2	1958	FSL	656	FWL	40.20922	-105.03401	2.6	5078	NWSW
3	HALEY 3	1957	FSL	702	FWL	40.20922	-105.03385	1.9	5078	NWSW
4	HALEY 1	1997	FSL	657	FWL	40.20933	-105.03401	2.6	5079	NWSW

NOTE: THE HALEY 1 HAS BEEN PLUGGED & ABANDONED.



DATE: 9/16/2016  
PROJECT#: 2015154