

EXTRACTION OIL & GAS

WELD COUNTY, COLORADO (NAD 83)

NW SW SEC. 21 T3N R68W 6th P.M.

KITELEY 4

ORIGINAL WELLBORE

24 August, 2016

Plan: PROPOSAL #1





Project: WELD COUNTY, COLORADO (NAD 83)
Site: NW SW SEC. 21 T3N R68W 6th P.M.
Well: KITELEY 4
Wellbore: ORIGINAL WELLBORE
Design: PROPOSAL #1

ANNOTATIONS

TVD	MD	Inc	Azi	+N/-S	+E/-W	VSect	Dep	Annotation
0.0	0.0	0.00	0.00	0.0	0.0	0.0	0.0	SHL: 1468ft FSL & 559ft FWL of Sec 21
400.0	400.0	0.00	0.00	0.0	0.0	0.0	0.0	START NUDGE (2°/100ft BUR)
995.7	1000.1	12.00	295.74	27.2	-56.4	-53.8	62.6	EOB TO 12° INC
3917.3	3987.0	12.00	295.74	296.9	-615.9	-587.0	683.7	END OF TANGENT
4513.0	4587.0	0.00	0.00	324.1	-672.3	-640.7	746.3	EOD TO VERTICAL
6523.0	6597.0	0.00	0.00	324.1	-672.3	-640.7	746.3	KOP (10°/100ft BUR)
7096.0	7497.0	90.00	89.33	330.8	-99.4	-69.5	1319.3	HZ LP: 1800ft FSL & 460ft FWL of Sec 21
7096.0	11859.5	90.00	89.34	381.4	4262.8	4279.8	5681.8	BHL: 1800ft FSL & 460ft FEL of Sec 21

WELLBORE TARGET DETAILS (LAT/LONG)

Name	TVD	+N/-S	+E/-W	Latitude	Longitude
KOP - KITELEY 4	6523.0	324.1	-672.3	40.208900	-105.017708
BHL - KITELEY 4	7096.0	381.4	4262.8	40.209056	-105.000039
HZ LP - KITELEY 4	7096.0	330.8	-99.4	40.208918	-105.015657

FORMATION TOP DETAILS

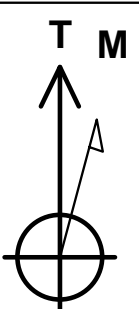
TVDPath	MDPath	Formation
3550.0	3611.5	PARKMAN
4360.0	4434.0	SUSSEX
4602.0	4676.0	SHANNON
6926.0	7044.0	SHARON SPRINGS
6966.0	7103.5	NIOBRARA

PROPOSED LOCAL COORDINATES

SHL: 1468ft FSL & 559ft FWL of Sec 21

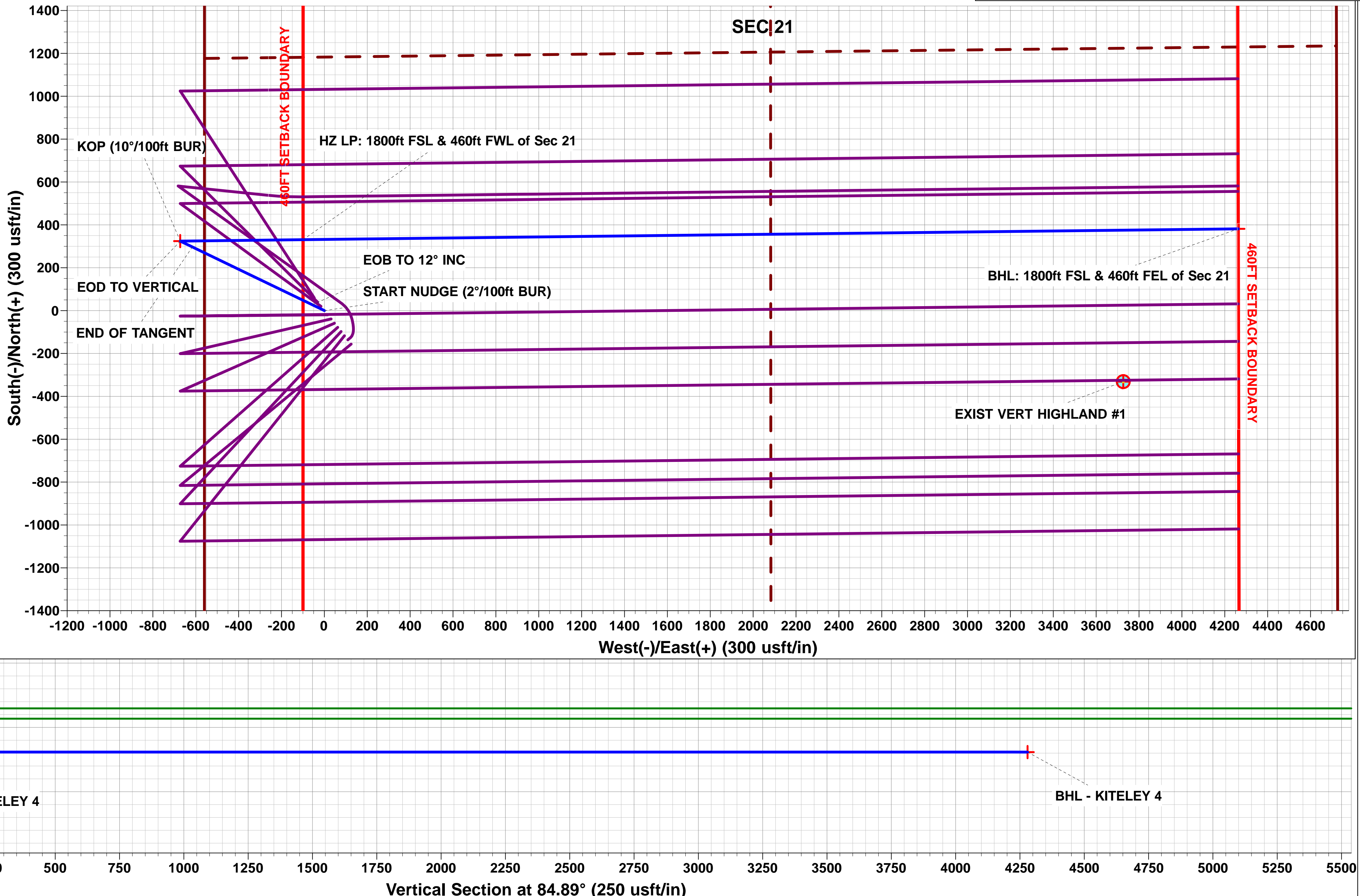
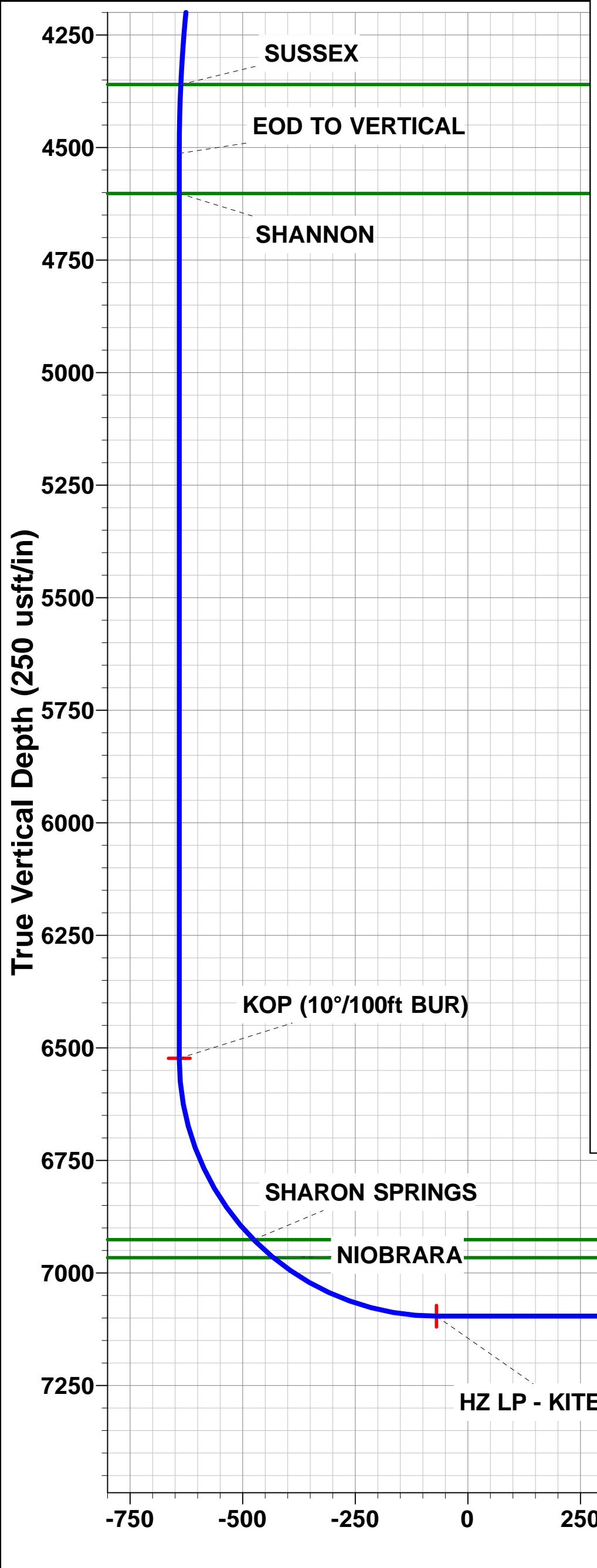
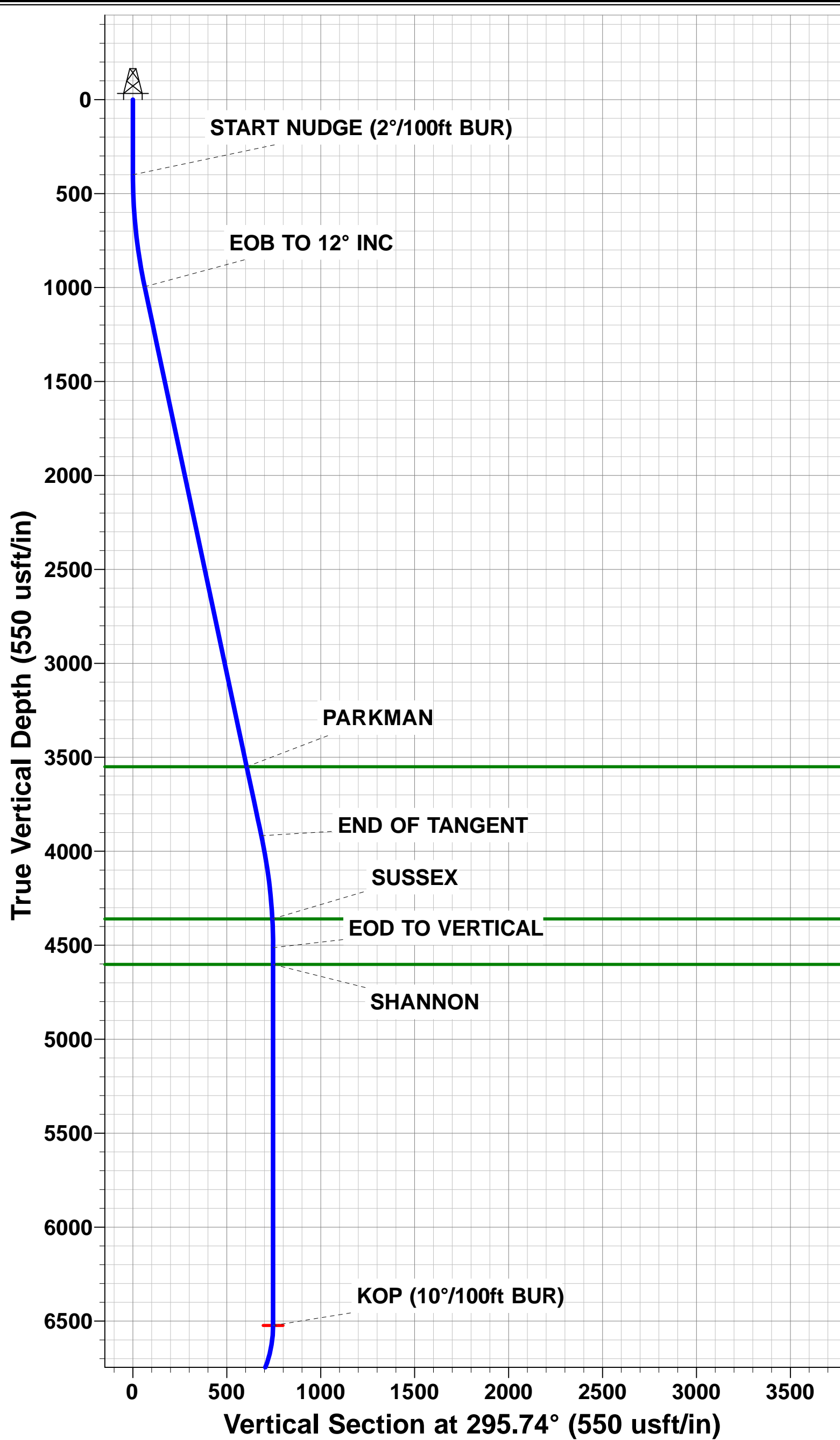
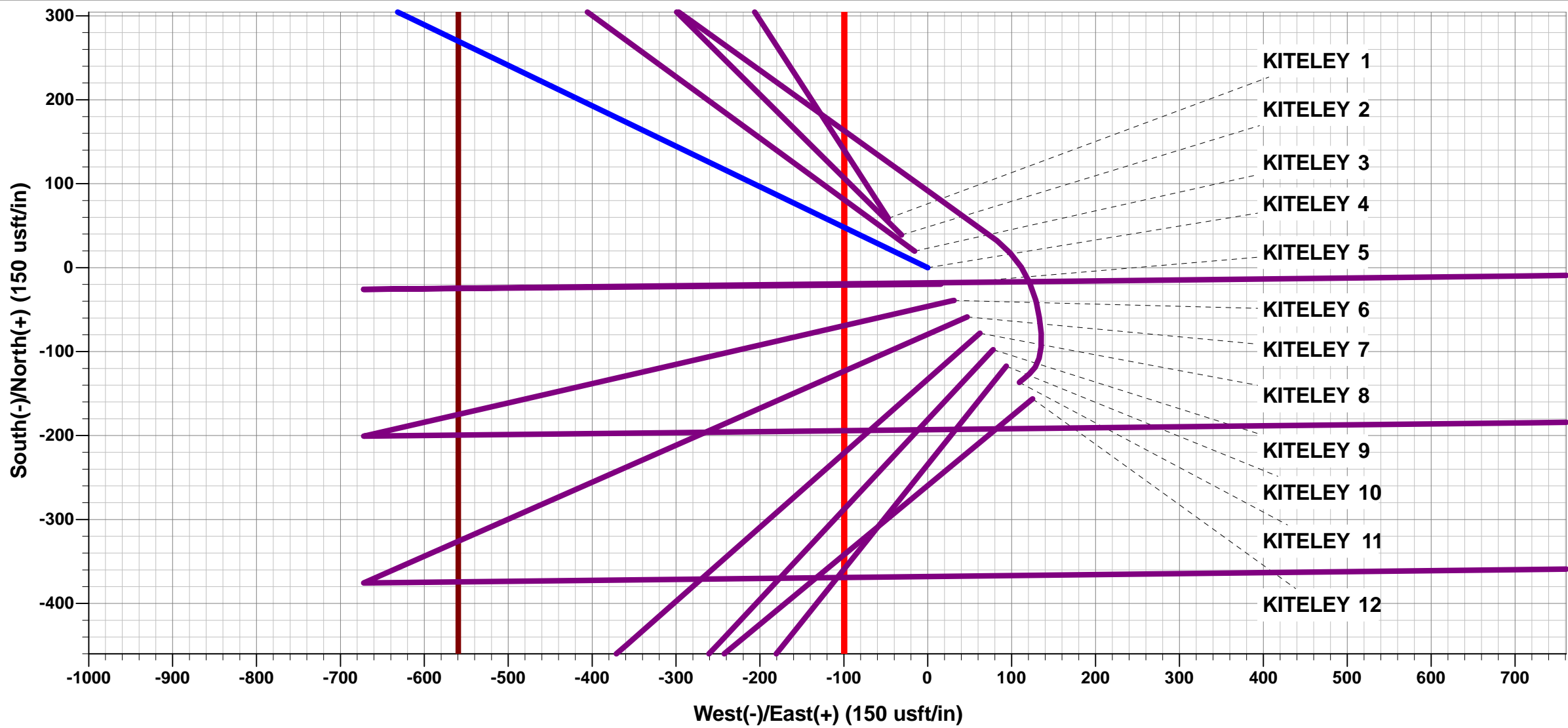
LP: 1800ft FSL & 460ft FWL of Sec 21

BHL: 1800ft FSL & 460ft FEL of Sec 21



Azimuths to True North
Magnetic North: 8.41°

Magnetic Field
Strength: 52356.9snT
Dip Angle: 66.68°
Date: 24/08/2016
Model: IGRF2015



Planning Report



Database:	EDM 5000.1 Single User Db	Local Co-ordinate Reference:	Well KITELEY 4
Company:	EXTRACTION OIL & GAS	TVD Reference:	KB-EST @ 5007.0usft (Original Well Elev)
Project:	WELD COUNTY, COLORADO (NAD 83)	MD Reference:	KB-EST @ 5007.0usft (Original Well Elev)
Site:	NW SW SEC. 21 T3N R68W 6th P.M.	North Reference:	True
Well:	KITELEY 4	Survey Calculation Method:	Minimum Curvature
Wellbore:	ORIGINAL WELLBORE		
Design:	PROPOSAL #1		

Project	WELD COUNTY, COLORADO (NAD 83)		
Map System:	US State Plane 1983	System Datum:	Mean Sea Level
Geo Datum:	North American Datum 1983		
Map Zone:	Colorado Northern Zone		Using geodetic scale factor

Site	NW SW SEC. 21 T3N R68W 6th P.M.		
Site Position:		Northing:	1,319,048.75 usft
From:	Lat/Long	Easting:	3,135,328.07 usft
Position Uncertainty:	0.0 usft	Slot Radius:	1.10000ft
		Latitude:	40.208171
		Longitude:	-105.015469
		Grid Convergence:	0.31 °

Well	KITELEY 4		
Well Position	+N/-S	-58.7 usft	Northing:
	+E/-W	46.9 usft	Easting:
Position Uncertainty		0.0 usft	Wellhead Elevation:
			Latitude:
			Longitude:
			Ground Level:

Wellbore	ORIGINAL WELLBORE				
Magnetics	Model Name	Sample Date	Declination (°)	Dip Angle (°)	Field Strength (nT)
	IGRF2015	24/08/2016	8.41	66.68	52,357

Design	PROPOSAL #1			
Audit Notes:				
Version:	Phase:	PROTOTYPE	Tie On Depth:	0.0
Vertical Section:	Depth From (TVD) (usft)	+N/-S (usft)	+E/-W (usft)	Direction (°)
	7,096.0	0.0	0.0	84.89

Plan Sections											
MD (usft)	Inc (°)	Azi (°)	Vertical Depth	SS (usft)	+N/-S (usft)	+E/-W (usft)	Dogleg Rate (°/100usf)	Build Rate (°/100usf)	Turn Rate (°/100usf)	TFO (°)	Target
0.0	0.00	0.00	0.0	-5,007.0	0.0	0.0	0.00	0.00	0.00	0.00	
400.0	0.00	0.00	400.0	-4,607.0	0.0	0.0	0.00	0.00	0.00	0.00	
1,000.1	12.00	295.74	995.7	-4,011.3	27.2	-56.4	2.00	2.00	0.00	295.74	
3,987.0	12.00	295.74	3,917.3	-1,089.7	296.9	-615.9	0.00	0.00	0.00	0.00	
4,587.0	0.00	0.00	4,513.0	-494.0	324.1	-672.3	2.00	-2.00	0.00	180.00	
6,597.0	0.00	0.00	6,523.0	1,516.0	324.1	-672.3	0.00	0.00	0.00	0.00	KOP - KITELEY 4
7,497.0	90.00	89.33	7,096.0	2,089.0	330.8	-99.4	10.00	10.00	0.00	89.33	
11,859.5	90.00	89.34	7,096.0	2,089.0	381.4	4,262.8	0.00	0.00	0.00	96.34	BHL - KITELEY 4

Database:	EDM 5000.1 Single User Db	Local Co-ordinate Reference:	Well KITELEY 4
Company:	EXTRACTION OIL & GAS	TVD Reference:	KB-EST @ 5007.0usft (Original Well Elev)
Project:	WELD COUNTY, COLORADO (NAD 83)	MD Reference:	KB-EST @ 5007.0usft (Original Well Elev)
Site:	NW SW SEC. 21 T3N R68W 6th P.M.	North Reference:	True
Well:	KITELEY 4	Survey Calculation Method:	Minimum Curvature
Wellbore:	ORIGINAL WELLBORE		
Design:	PROPOSAL #1		

Planned Survey

MD (usft)	Inc (°)	Azi (°)	TVD (usft)	SS (usft)	+N/-S (usft)	+E/-W (usft)	Vertical Section (usft)	Dogleg Rate (°/100usft)	Build Rate (°/100usft)	Turn Rate (°/100usft)
SHL: 1468ft FSL & 559ft FWL of Sec 21										
0.0	0.00	0.00	0.0	5,007.00	0.0	0.0	0.0	0.00	0.00	0.00
100.0	0.00	0.00	100.0	4,907.00	0.0	0.0	0.0	0.00	0.00	0.00
200.0	0.00	0.00	200.0	4,807.00	0.0	0.0	0.0	0.00	0.00	0.00
300.0	0.00	0.00	300.0	4,707.00	0.0	0.0	0.0	0.00	0.00	0.00
START NUDGE (2°/100ft BUR)										
400.0	0.00	0.00	400.0	4,607.00	0.0	0.0	0.0	0.00	0.00	0.00
500.0	2.00	295.74	500.0	4,507.02	0.8	-1.6	-1.5	2.00	2.00	0.00
600.0	4.00	295.74	599.8	4,407.16	3.0	-6.3	-6.0	2.00	2.00	0.00
700.0	6.00	295.74	699.5	4,307.55	6.8	-14.1	-13.5	2.00	2.00	0.00
800.0	8.00	295.74	798.7	4,208.30	12.1	-25.1	-23.9	2.00	2.00	0.00
900.0	10.00	295.74	897.5	4,109.53	18.9	-39.2	-37.4	2.00	2.00	0.00
1,000.0	12.00	295.74	995.6	4,011.38	27.2	-56.4	-53.7	2.00	2.00	0.00
EOB TO 12° INC										
1,000.1	12.00	295.74	995.7	4,011.28	27.2	-56.4	-53.8	2.00	2.00	0.00
1,100.0	12.00	295.74	1,093.4	3,913.56	36.2	-75.1	-71.6	0.00	0.00	0.00
1,200.0	12.00	295.74	1,191.3	3,815.75	45.2	-93.9	-89.4	0.00	0.00	0.00
1,300.0	12.00	295.74	1,289.1	3,717.93	54.3	-112.6	-107.3	0.00	0.00	0.00
1,400.0	12.00	295.74	1,386.9	3,620.12	63.3	-131.3	-125.2	0.00	0.00	0.00
1,500.0	12.00	295.74	1,484.7	3,522.31	72.3	-150.0	-143.0	0.00	0.00	0.00
1,600.0	12.00	295.74	1,582.5	3,424.49	81.4	-168.8	-160.9	0.00	0.00	0.00
1,700.0	12.00	295.74	1,680.3	3,326.68	90.4	-187.5	-178.7	0.00	0.00	0.00
1,800.0	12.00	295.74	1,778.1	3,228.86	99.4	-206.2	-196.6	0.00	0.00	0.00
1,900.0	12.00	295.74	1,875.9	3,131.05	108.5	-225.0	-214.4	0.00	0.00	0.00
2,000.0	12.00	295.74	1,973.8	3,033.24	117.5	-243.7	-232.3	0.00	0.00	0.00
2,100.0	12.00	295.74	2,071.6	2,935.42	126.5	-262.4	-250.1	0.00	0.00	0.00
2,200.0	12.00	295.74	2,169.4	2,837.61	135.5	-281.2	-268.0	0.00	0.00	0.00
2,300.0	12.00	295.74	2,267.2	2,739.79	144.6	-299.9	-285.8	0.00	0.00	0.00
2,400.0	12.00	295.74	2,365.0	2,641.98	153.6	-318.6	-303.7	0.00	0.00	0.00
2,500.0	12.00	295.74	2,462.8	2,544.17	162.6	-337.4	-321.5	0.00	0.00	0.00
2,600.0	12.00	295.74	2,560.6	2,446.35	171.7	-356.1	-339.4	0.00	0.00	0.00
2,700.0	12.00	295.74	2,658.5	2,348.54	180.7	-374.8	-357.2	0.00	0.00	0.00
2,800.0	12.00	295.74	2,756.3	2,250.72	189.7	-393.6	-375.1	0.00	0.00	0.00
2,900.0	12.00	295.74	2,854.1	2,152.91	198.8	-412.3	-392.9	0.00	0.00	0.00
3,000.0	12.00	295.74	2,951.9	2,055.10	207.8	-431.0	-410.8	0.00	0.00	0.00
3,100.0	12.00	295.74	3,049.7	1,957.28	216.8	-449.8	-428.6	0.00	0.00	0.00
3,200.0	12.00	295.74	3,147.5	1,859.47	225.8	-468.5	-446.5	0.00	0.00	0.00
3,300.0	12.00	295.74	3,245.3	1,761.65	234.9	-487.2	-464.3	0.00	0.00	0.00
3,400.0	12.00	295.74	3,343.2	1,663.84	243.9	-505.9	-482.2	0.00	0.00	0.00
3,500.0	12.00	295.74	3,441.0	1,566.02	252.9	-524.7	-500.0	0.00	0.00	0.00
3,600.0	12.00	295.74	3,538.8	1,468.21	262.0	-543.4	-517.9	0.00	0.00	0.00
PARKMAN										
3,611.5	12.00	295.74	3,550.0	1,457.00	263.0	-545.6	-519.9	0.00	0.00	0.00
3,700.0	12.00	295.74	3,636.6	1,370.40	271.0	-562.1	-535.8	0.00	0.00	0.00
3,800.0	12.00	295.74	3,734.4	1,272.58	280.0	-580.9	-553.6	0.00	0.00	0.00
3,900.0	12.00	295.74	3,832.2	1,174.77	289.1	-599.6	-571.5	0.00	0.00	0.00
END OF TANGENT										
3,987.0	12.00	295.74	3,917.3	1,089.72	296.9	-615.9	-587.0	0.00	0.00	0.00
4,000.0	11.74	295.74	3,930.1	1,076.95	298.1	-618.3	-589.3	2.00	-2.00	0.00
4,100.0	9.74	295.74	4,028.3	978.71	306.2	-635.1	-605.3	2.00	-2.00	0.00
4,200.0	7.74	295.74	4,127.1	879.87	312.8	-648.8	-618.3	2.00	-2.00	0.00
4,300.0	5.74	295.74	4,226.4	780.57	317.9	-659.4	-628.4	2.00	-2.00	0.00
4,400.0	3.74	295.74	4,326.1	680.92	321.4	-666.8	-635.5	2.00	-2.00	0.00

Database:	EDM 5000.1 Single User Db	Local Co-ordinate Reference:	Well KITELEY 4
Company:	EXTRACTION OIL & GAS	TVD Reference:	KB-EST @ 5007.0usft (Original Well Elev)
Project:	WELD COUNTY, COLORADO (NAD 83)	MD Reference:	KB-EST @ 5007.0usft (Original Well Elev)
Site:	NW SW SEC. 21 T3N R68W 6th P.M.	North Reference:	True
Well:	KITELEY 4	Survey Calculation Method:	Minimum Curvature
Wellbore:	ORIGINAL WELLBORE		
Design:	PROPOSAL #1		

Planned Survey

MD (usft)	Inc (°)	Azi (°)	TVD (usft)	SS (usft)	+N/-S (usft)	+E/-W (usft)	Vertical Section (usft)	Dogleg Rate (°/100usft)	Build Rate (°/100usft)	Turn Rate (°/100usft)
SUSSEX										
4,434.0	3.06	295.74	4,360.0	647.00	322.3	-668.6	-637.2	2.00	-2.00	0.00
4,500.0	1.74	295.74	4,426.0	581.03	323.5	-671.1	-639.6	2.00	-2.00	0.00
EOD TO VERTICAL										
4,587.0	0.00	0.00	4,513.0	494.00	324.1	-672.3	-640.7	2.00	-2.00	0.00
4,600.0	0.00	0.00	4,526.0	481.05	324.1	-672.3	-640.7	0.00	0.00	0.00
SHANNON										
4,676.0	0.00	0.00	4,602.0	405.00	324.1	-672.3	-640.7	0.00	0.00	0.00
4,700.0	0.00	0.00	4,626.0	381.05	324.1	-672.3	-640.7	0.00	0.00	0.00
4,800.0	0.00	0.00	4,726.0	281.05	324.1	-672.3	-640.7	0.00	0.00	0.00
4,900.0	0.00	0.00	4,826.0	181.05	324.1	-672.3	-640.7	0.00	0.00	0.00
5,000.0	0.00	0.00	4,926.0	81.05	324.1	-672.3	-640.7	0.00	0.00	0.00
5,100.0	0.00	0.00	5,026.0	-18.95	324.1	-672.3	-640.7	0.00	0.00	0.00
5,200.0	0.00	0.00	5,126.0	-118.95	324.1	-672.3	-640.7	0.00	0.00	0.00
5,300.0	0.00	0.00	5,226.0	-218.95	324.1	-672.3	-640.7	0.00	0.00	0.00
5,400.0	0.00	0.00	5,326.0	-318.95	324.1	-672.3	-640.7	0.00	0.00	0.00
5,500.0	0.00	0.00	5,426.0	-418.95	324.1	-672.3	-640.7	0.00	0.00	0.00
5,600.0	0.00	0.00	5,526.0	-518.95	324.1	-672.3	-640.7	0.00	0.00	0.00
5,700.0	0.00	0.00	5,626.0	-618.95	324.1	-672.3	-640.7	0.00	0.00	0.00
5,800.0	0.00	0.00	5,726.0	-718.95	324.1	-672.3	-640.7	0.00	0.00	0.00
5,900.0	0.00	0.00	5,826.0	-818.95	324.1	-672.3	-640.7	0.00	0.00	0.00
6,000.0	0.00	0.00	5,926.0	-918.95	324.1	-672.3	-640.7	0.00	0.00	0.00
6,100.0	0.00	0.00	6,026.0	-1,018.95	324.1	-672.3	-640.7	0.00	0.00	0.00
6,200.0	0.00	0.00	6,126.0	-1,118.95	324.1	-672.3	-640.7	0.00	0.00	0.00
6,300.0	0.00	0.00	6,226.0	-1,218.95	324.1	-672.3	-640.7	0.00	0.00	0.00
6,400.0	0.00	0.00	6,326.0	-1,318.95	324.1	-672.3	-640.7	0.00	0.00	0.00
6,500.0	0.00	0.00	6,426.0	-1,418.95	324.1	-672.3	-640.7	0.00	0.00	0.00
KOP (10°/100ft BUR)										
6,597.0	0.00	0.00	6,523.0	-1,516.00	324.1	-672.3	-640.7	0.00	0.00	0.00
6,600.0	0.30	89.33	6,526.0	-1,518.95	324.1	-672.3	-640.7	10.00	10.00	0.00
6,700.0	10.30	89.33	6,625.4	-1,618.40	324.2	-663.1	-631.5	10.00	10.00	0.00
6,800.0	20.30	89.33	6,721.7	-1,714.73	324.5	-636.7	-605.3	10.00	10.00	0.00
6,900.0	30.30	89.33	6,812.0	-1,805.03	325.0	-594.1	-562.7	10.00	10.00	0.00
7,000.0	40.30	89.33	6,893.5	-1,886.55	325.7	-536.4	-505.2	10.00	10.00	0.00
SHARON SPRINGS										
7,044.0	44.70	89.33	6,926.0	-1,919.00	326.0	-506.6	-475.6	10.00	10.00	0.00
7,100.0	50.30	89.33	6,963.8	-1,956.80	326.5	-465.4	-434.4	10.00	10.00	0.00
NIOBRARA										
7,103.5	50.64	89.33	6,966.0	-1,959.00	326.6	-462.7	-431.8	10.00	10.00	0.00
7,200.0	60.30	89.33	7,020.7	-2,013.67	327.5	-383.3	-352.6	10.00	10.00	0.00
7,300.0	70.30	89.33	7,062.4	-2,055.41	328.5	-292.6	-262.1	10.00	10.00	0.00
7,400.0	80.30	89.33	7,087.8	-2,080.76	329.7	-196.0	-165.8	10.00	10.00	0.00
HZ LP: 1800ft FSL & 460ft FWL of Sec 21										
7,497.0	90.00	89.33	7,096.0	-2,088.96	330.8	-99.4	-69.5	10.00	10.00	0.00
7,500.0	90.00	89.33	7,096.0	-2,088.96	330.8	-96.4	-66.6	0.00	0.00	0.00
7,600.0	90.00	89.33	7,096.0	-2,088.96	332.0	3.6	33.1	0.00	0.00	0.00
7,700.0	90.00	89.33	7,096.0	-2,088.96	333.2	103.6	132.8	0.00	0.00	0.00
7,800.0	90.00	89.33	7,096.0	-2,088.96	334.3	203.5	232.5	0.00	0.00	0.00
7,900.0	90.00	89.33	7,096.0	-2,088.96	335.5	303.5	332.2	0.00	0.00	0.00
8,000.0	90.00	89.33	7,096.0	-2,088.96	336.7	403.5	431.9	0.00	0.00	0.00
8,100.0	90.00	89.33	7,096.0	-2,088.96	337.8	503.5	531.6	0.00	0.00	0.00
8,200.0	90.00	89.33	7,096.0	-2,088.96	339.0	603.5	631.3	0.00	0.00	0.00
8,300.0	90.00	89.33	7,096.0	-2,088.96	340.2	703.5	731.0	0.00	0.00	0.00

Database:	EDM 5000.1 Single User Db	Local Co-ordinate Reference:	Well KITELEY 4
Company:	EXTRACTION OIL & GAS	TVD Reference:	KB-EST @ 5007.0usft (Original Well Elev)
Project:	WELD COUNTY, COLORADO (NAD 83)	MD Reference:	KB-EST @ 5007.0usft (Original Well Elev)
Site:	NW SW SEC. 21 T3N R68W 6th P.M.	North Reference:	True
Well:	KITELEY 4	Survey Calculation Method:	Minimum Curvature
Wellbore:	ORIGINAL WELLBORE		
Design:	PROPOSAL #1		

Planned Survey

MD (usft)	Inc (°)	Azi (°)	TVD (usft)	SS (usft)	+N/-S (usft)	+E/-W (usft)	Vertical Section (usft)	Dogleg Rate (°/100usft)	Build Rate (°/100usft)	Turn Rate (°/100usft)
8,400.0	90.00	89.33	7,096.0	-2,088.96	341.3	803.5	830.7	0.00	0.00	0.00
8,500.0	90.00	89.33	7,096.0	-2,088.96	342.5	903.5	930.4	0.00	0.00	0.00
8,600.0	90.00	89.33	7,096.0	-2,088.96	343.7	1,003.5	1,030.1	0.00	0.00	0.00
8,700.0	90.00	89.33	7,096.0	-2,088.96	344.8	1,103.5	1,129.8	0.00	0.00	0.00
8,800.0	90.00	89.33	7,096.0	-2,088.96	346.0	1,203.5	1,229.5	0.00	0.00	0.00
8,900.0	90.00	89.33	7,096.0	-2,088.96	347.2	1,303.5	1,329.2	0.00	0.00	0.00
9,000.0	90.00	89.33	7,096.0	-2,088.96	348.3	1,403.5	1,428.9	0.00	0.00	0.00
9,100.0	90.00	89.33	7,096.0	-2,088.96	349.5	1,503.5	1,528.6	0.00	0.00	0.00
9,200.0	90.00	89.33	7,096.0	-2,088.96	350.7	1,603.5	1,628.3	0.00	0.00	0.00
9,300.0	90.00	89.33	7,096.0	-2,088.97	351.8	1,703.4	1,728.0	0.00	0.00	0.00
9,400.0	90.00	89.33	7,096.0	-2,088.97	353.0	1,803.4	1,827.7	0.00	0.00	0.00
9,500.0	90.00	89.33	7,096.0	-2,088.97	354.1	1,903.4	1,927.4	0.00	0.00	0.00
9,600.0	90.00	89.33	7,096.0	-2,088.97	355.3	2,003.4	2,027.1	0.00	0.00	0.00
9,700.0	90.00	89.34	7,096.0	-2,088.97	356.5	2,103.4	2,126.8	0.00	0.00	0.00
9,800.0	90.00	89.34	7,096.0	-2,088.97	357.6	2,203.4	2,226.5	0.00	0.00	0.00
9,900.0	90.00	89.34	7,096.0	-2,088.97	358.8	2,303.4	2,326.2	0.00	0.00	0.00
10,000.0	90.00	89.34	7,096.0	-2,088.97	359.9	2,403.4	2,425.9	0.00	0.00	0.00
10,100.0	90.00	89.34	7,096.0	-2,088.97	361.1	2,503.4	2,525.6	0.00	0.00	0.00
10,200.0	90.00	89.34	7,096.0	-2,088.97	362.3	2,603.4	2,625.3	0.00	0.00	0.00
10,300.0	90.00	89.34	7,096.0	-2,088.98	363.4	2,703.4	2,725.0	0.00	0.00	0.00
10,400.0	90.00	89.34	7,096.0	-2,088.98	364.6	2,803.4	2,824.7	0.00	0.00	0.00
10,500.0	90.00	89.34	7,096.0	-2,088.98	365.7	2,903.4	2,924.4	0.00	0.00	0.00
10,600.0	90.00	89.34	7,096.0	-2,088.98	366.9	3,003.4	3,024.1	0.00	0.00	0.00
10,700.0	90.00	89.34	7,096.0	-2,088.98	368.0	3,103.4	3,123.8	0.00	0.00	0.00
10,800.0	90.00	89.34	7,096.0	-2,088.98	369.2	3,203.3	3,223.5	0.00	0.00	0.00
10,900.0	90.00	89.34	7,096.0	-2,088.98	370.4	3,303.3	3,323.2	0.00	0.00	0.00
11,000.0	90.00	89.34	7,096.0	-2,088.99	371.5	3,403.3	3,422.9	0.00	0.00	0.00
11,100.0	90.00	89.34	7,096.0	-2,088.99	372.7	3,503.3	3,522.6	0.00	0.00	0.00
11,200.0	90.00	89.34	7,096.0	-2,088.99	373.8	3,603.3	3,622.3	0.00	0.00	0.00
11,300.0	90.00	89.34	7,096.0	-2,088.99	375.0	3,703.3	3,722.0	0.00	0.00	0.00
11,400.0	90.00	89.34	7,096.0	-2,088.99	376.1	3,803.3	3,821.7	0.00	0.00	0.00
11,500.0	90.00	89.34	7,096.0	-2,088.99	377.3	3,903.3	3,921.4	0.00	0.00	0.00
11,600.0	90.00	89.34	7,096.0	-2,089.00	378.4	4,003.3	4,021.1	0.00	0.00	0.00
11,700.0	90.00	89.34	7,096.0	-2,089.00	379.6	4,103.3	4,120.8	0.00	0.00	0.00
11,800.0	90.00	89.34	7,096.0	-2,089.00	380.7	4,203.3	4,220.5	0.00	0.00	0.00
BHL: 1800ft FSL & 460ft FEL of Sec 21										
11,859.5	90.00	89.34	7,096.0	-2,089.00	381.4	4,262.8	4,279.8	0.00	0.00	0.00

Formations

MD (usft)	TVD (usft)	Name	Lithology	Dip (°)	Dip Direction (°)
3,611.5	3,550.0	PARKMAN			
4,434.0	4,360.0	SUSSEX			
4,676.0	4,602.0	SHANNON			
7,044.0	6,926.0	SHARON SPRINGS			
7,103.5	6,966.0	NIOBRARA			

Database:	EDM 5000.1 Single User Db	Local Co-ordinate Reference:	Well KITELEY 4
Company:	EXTRACTION OIL & GAS	TVD Reference:	KB-EST @ 5007.0usft (Original Well Elev)
Project:	WELD COUNTY, COLORADO (NAD 83)	MD Reference:	KB-EST @ 5007.0usft (Original Well Elev)
Site:	NW SW SEC. 21 T3N R68W 6th P.M.	North Reference:	True
Well:	KITELEY 4	Survey Calculation Method:	Minimum Curvature
Wellbore:	ORIGINAL WELLBORE		
Design:	PROPOSAL #1		

Plan Annotations

MD (usft)	TVD (usft)	Local Coordinates		Comment
		+N/-S (usft)	+E/-W (usft)	
0.0	0.0	0.0	0.0	SHL: 1468ft FSL & 559ft FWL of Sec 21
400.0	400.0	0.0	0.0	START NUDGE (2°/100ft BUR)
1,000.1	995.7	27.2	-56.4	EOB TO 12° INC
3,987.0	3,917.3	296.9	-615.9	END OF TANGENT
4,587.0	4,513.0	324.1	-672.3	EOD TO VERTICAL
6,597.0	6,523.0	324.1	-672.3	KOP (10°/100ft BUR)
7,497.0	7,096.0	330.8	-99.4	HZ LP: 1800ft FSL & 460ft FWL of Sec 21
11,859.5	7,096.0	381.4	4,262.8	BHL: 1800ft FSL & 460ft FEL of Sec 21