



TEMPERATURE CCL LOG

QUICK LOOK

Company **TEP ROCKY MOUNTAIN LLC**

Well RU 323-7

Field **RULISON**

County **GARFIELD** State **COLORADO**

Location:	API #:	05-045-23133-00	Other Services
-----------	--------	-----------------	----------------

QtrQtr; SENW

LAI: 39.436937

-OG. -107.819689

SEC	/	IMP	/S	RGE	93W
-----	---	-----	----	-----	-----

Permanent Datum	G.L.	Elevation
		7339

log Measured From	K.B.	Ft Above PD	24.0

Drilling Measured From K.B. G.L. / 339

Date	09-02-2016
------	------------

Run Number	ON
------------	----

Depth Driller	956
---------------	-----

Present Depth Driller	952
-----------------------	-----

Depth Logger	952
--------------	-----

Bottom Logged Interval	952
------------------------	-----

Top Log Interval	SURF
------------------	------

Fluid Level	FULL
-------------	------

Type Fluid	Wall
------------	------

Max. Recorded Temp.	78.1.7
---------------------	--------

Estimated Cement 1 op	384
-----------------------	-----

Equipment Number	216
------------------	-----

LOCATION	GRADE
----------	-------

Recorded by	IMCBK
-------------	-------

Willesseu by	MR. BR
--------------	--------

Borehole Record

Run Number	Bit	From	To
------------	-----	------	----

4.50

Casing Record

Weight

SURFACE

To

<<< Fold Here >>>

All interpretations are opinions based on inferences from electrical or other measurements and we cannot and do not guarantee the accuracy or correctness of any interpretation, and we shall not, except in the case of gross or willful negligence on our part, be liable or responsible for any loss, costs, damages, or expenses incurred or sustained by anyone resulting from any interpretation made by any of our officers, agents or employees. These interpretations are also subject to our general terms and conditions set out in our current Price Schedule.

WARRIOR 7.0 SOFTWARE - Comments

NOTE; THERE WAS NO LOG FOR DEPTH CONTROL.
SCALE MAIN PASS 5"= 100'.
NOTE; SHORT JOINT AT 5534' TO 5556'.

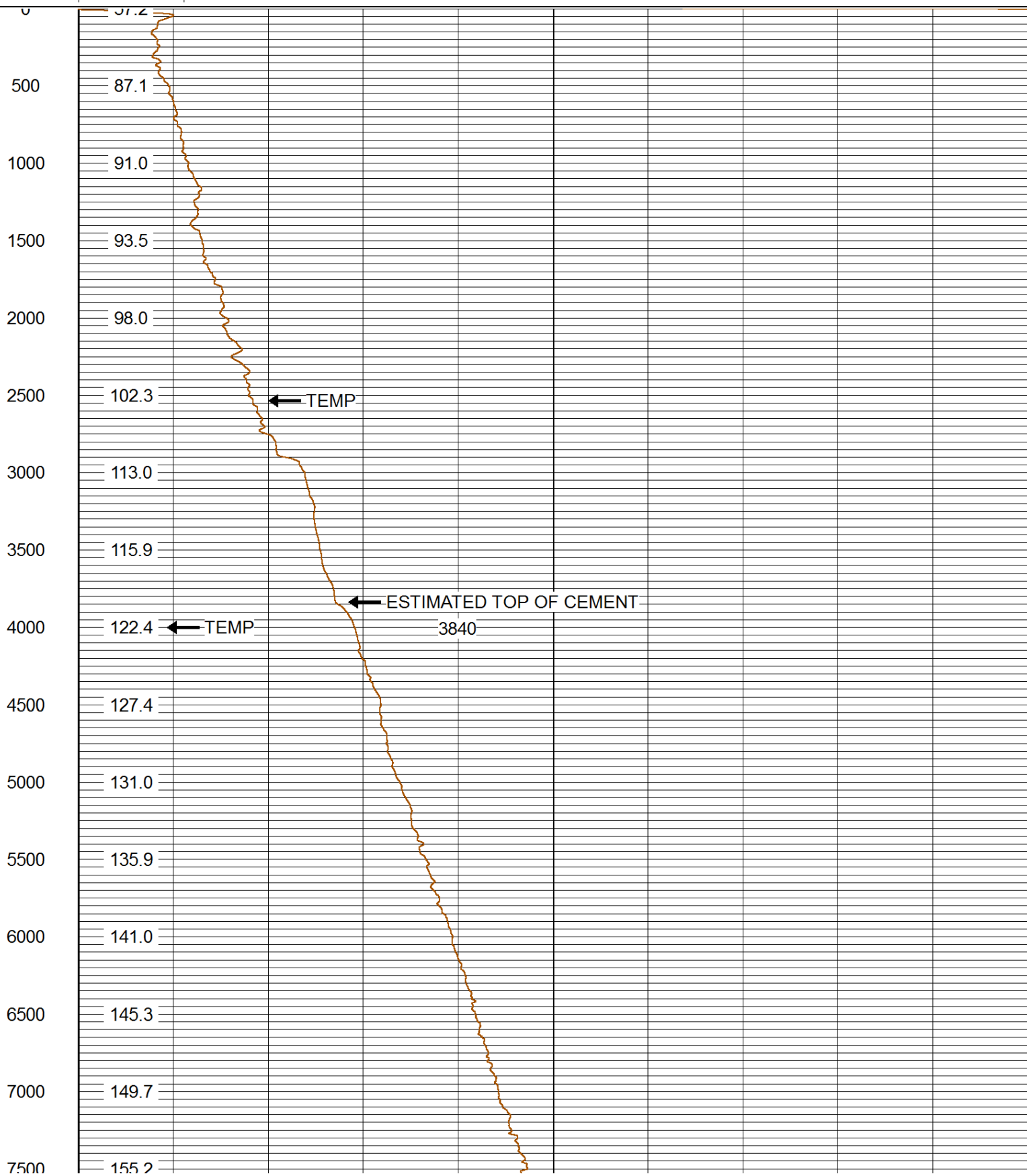


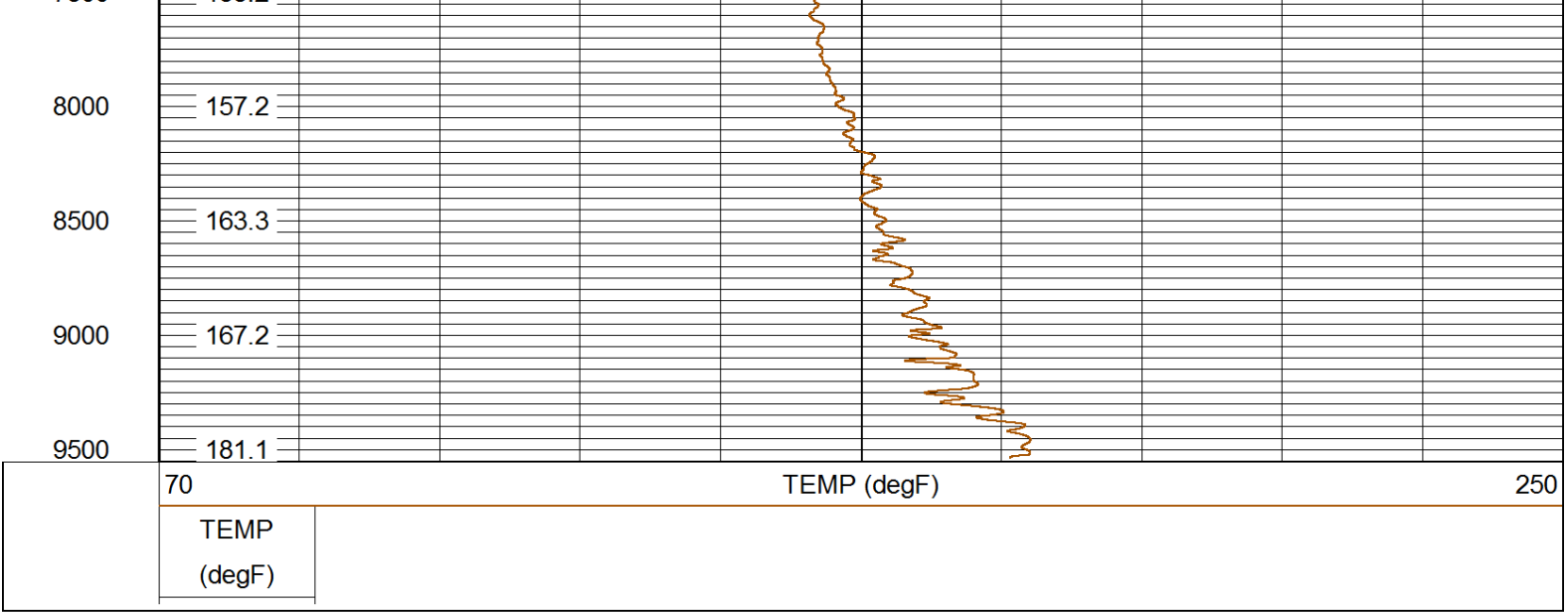
MAIN PASS QUICK LOOK

Database File: 09022016_tep_ru 323-7.db
 Dataset Pathname: mainpass/pass1
 Presentation Format: rmtemp_q
 Dataset Creation: Fri Sep 02 02:05:26 2016 by Log SCH 120430
 Charted by: Depth in Feet scaled 1:10000

70 TEMP (degF) 250

TEMP
(degF)





Company	TEP ROCKY MOUNTAIN LLC
Well	RU 323-7
Field	RULISON
County	GARFIELD
State	COLORADO