

<div><div><div><div>RMWS</div><div>ROCKY MOUNTAIN WIRELINE SERVICE</div></div></div></div> <div>TEMPERATURE CCL LOG QUICK LOOK</div>									
Company		TEP ROCKY MOUNTAIN LLC							
Well		RU 422-7							
Field		RULISON							
County		GARFIELD		State		COLORADO			
Location:		API # : 05-045-23231-00				Other Services			
		QtrQtr: SENW LAT. 39.456946 LOG. -107.819730							
SEC 7		TWP 7S		RGE 93W		Elevation			
Permanent Datum		G.L.		Elevation		7339'		K.B. 7363'	
Log Measured From		K.B.		Ft Above PD		24.0'		D.F.	
Drilling Measured From		K.B.						G.L. 7339'	
Date		08-21-2016							
Run Number		ONE							
Depth Driller		9435'							
Present Depth Driller		9394.2'							
Depth Logger		9391'							
Bottom Logged Interval		9391'							
Top Log Interval		SURFACE							
Fluid Level		FULL							
Type Fluid		WATER							
Max. Recorded Temp.		177.2 ° F							
Estimated Cement Top		4150'							
Equipment Number		218							
Location		GRAND JCT.							
Recorded By		MCBROOM							
Witnessed By		MR. ABBEY							
Borehole Record				Casing Record					
Run Number		Bit From To		Size		Weight		From To	
				4.50"		11.6#		SURFACE 9425'	

<<< Fold Here >>>

All interpretations are opinions based on inferences from electrical or other measurements and we cannot and do not guarantee the accuracy or correctness of any interpretation, and we shall not, except in the case of gross or willful negligence on our part, be liable or responsible for any loss, costs, damages, or expenses incurred or sustained by anyone resulting from any interpretation made by any of our officers, agents or employees. These interpretations are also subject to our general terms and conditions set out in our current Price Schedule.

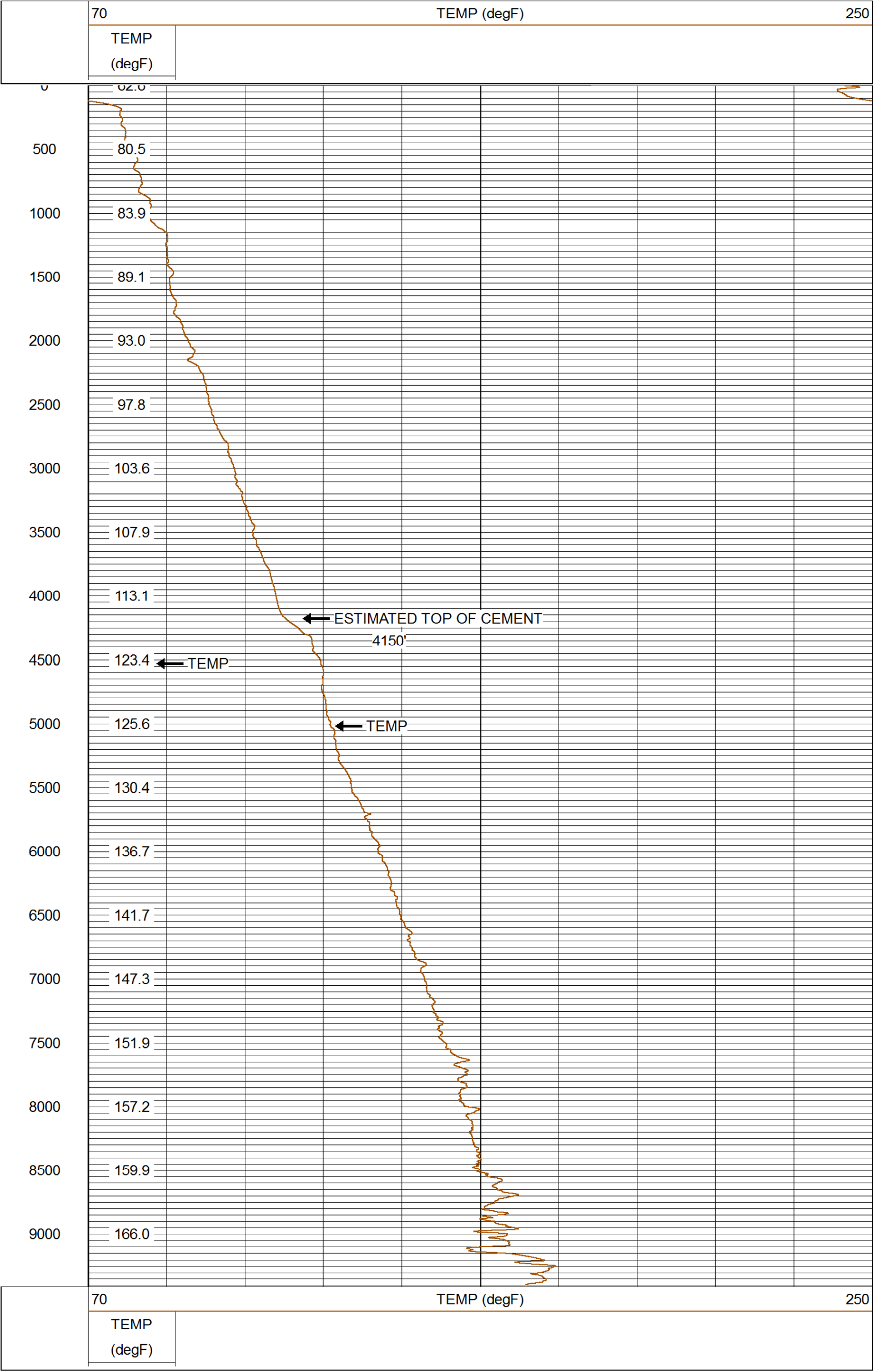
WARRIOR 7.0 SOFTWARE - Comments

NOTE; THERE WAS NO LOG FOR DEPTH CONTROL.
SCALE MAIN PASS 5"= 100'.
NOTE; SHORT JOINT AT 5602' to 5625'.



MAIN PASS QUICK LOOK

Database File: 08212016_tep_ru 422-7.db
Dataset Pathname: downpass/pass1.1
Presentation Format: rmtemp_q
Dataset Creation: Sun Aug 21 14:27:22 2016 by Calc SCH 120430
Charted by: Depth in Feet scaled 1:10000



Company TEP ROCKY MOUNTAIN LLC
Well RU 422-7
Field RULISON
County GARFIELD
State COLORADO