

T7N, R66W, 6th P.M.

GREAT WESTERN OPERATING COMPANY

EVENSTAR EE 01-039HC
SW 1/4 SW 1/4, SECTION 2, T7N, R66W, 6th P.M.
WELD COUNTY, COLORADO

BASIS OF BEARINGS

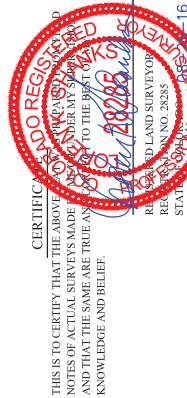
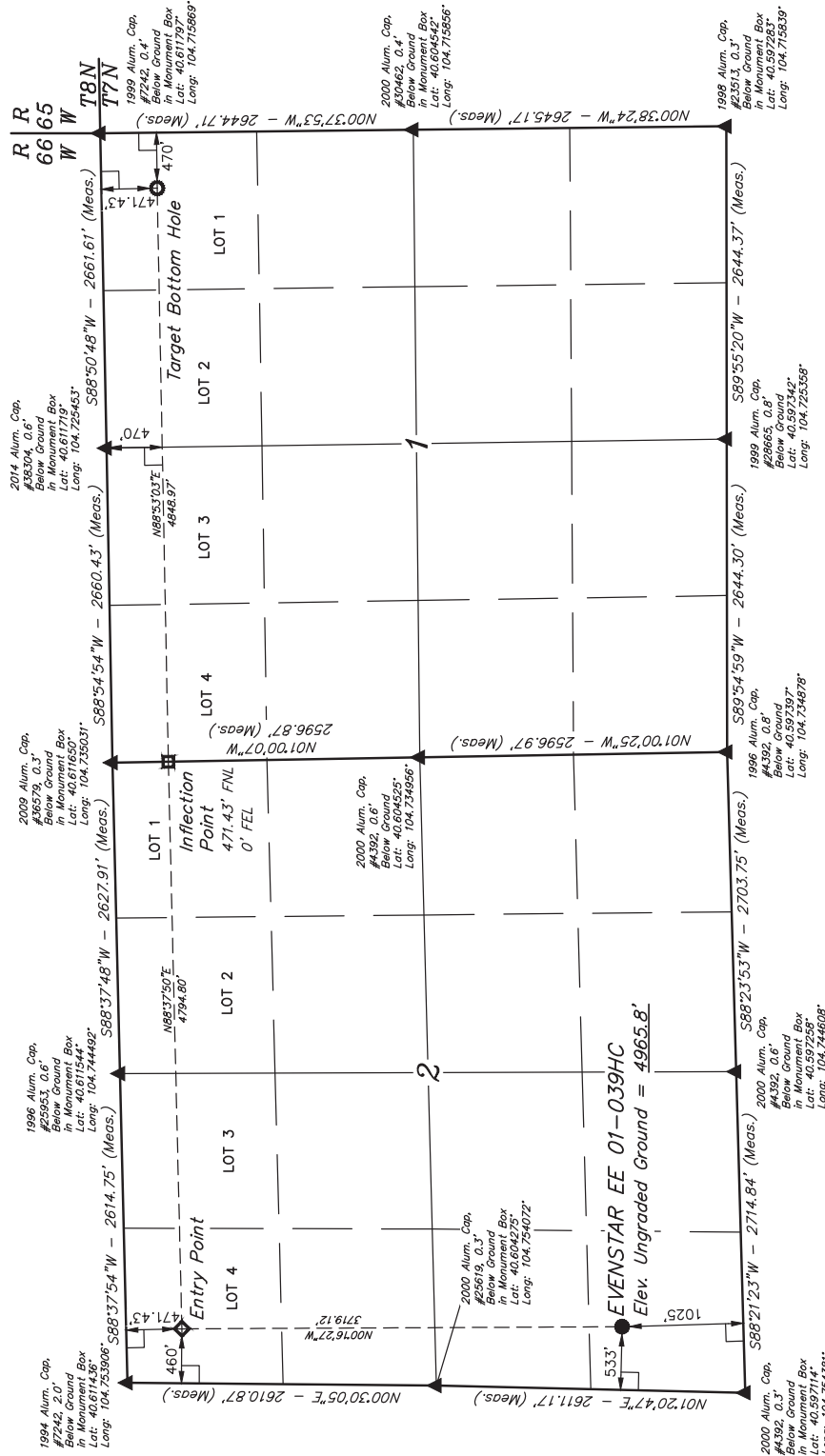
2014 Alum. Cap.
#25963, 0.6"
Below Ground
In Monument Box
Lat: 40.611719°
Long: 104.725463°

USGS COOPERATIVE BASE NETWORK CONTROL STATION:
DESIGNATION "VERMILYEA"; NGSD DATA SHEET LISTS THE NAVD
88 ELEVATION AS BEING 5026 FEET.

BASIS OF ELEVATION

USGS COOPERATIVE BASE NETWORK CONTROL STATION:
DESIGNATION "VERMILYEA"; NGSD DATA SHEET LISTS THE NAVD
88 ELEVATION AS BEING 5026 FEET.

N



CERTIFICATE AND REGISTERED
THIS IS TO CERTIFY THAT THE ABOVE SURVEY WAS MADE BY ME OR UNDER MY SUPERVISION
AND THAT THE SAME ARE TRUE AND CORRECT TO THE BEST OF MY KNOWLEDGE AND BELIEF.

RECEIVED BY LAND SURVEYOR
JARED CHRISTOPHER, D.S.
STATE OF COLORADO, NO. 28285
COMMISSION EXPIRES 12-31-16

REV: 1 08-24-16 K.B. (SL MOVE)

LEGEND:

- 90° SYMBOL
- PROPOSED WELLHEAD.
- ENTRY POINT.
- INFLECTION POINT.
- TARGET BOTTOM HOLE.
- SECTION CORNERS LOCATED. (NAD 83)

PDOP = 1.3



UELS, LLC
Corporate Office * 85 South 200 East
Vernal, UT 84078 * (435) 789-1017

SURVEYED BY	JARED CHRISTOPHER, D.S.	08-23-16	SCALE
DRAWN BY	C.D.L.	07-26-16	1" = 1000'

WELL LOCATION PLAT