

LARAMIE ENERGY, LLC

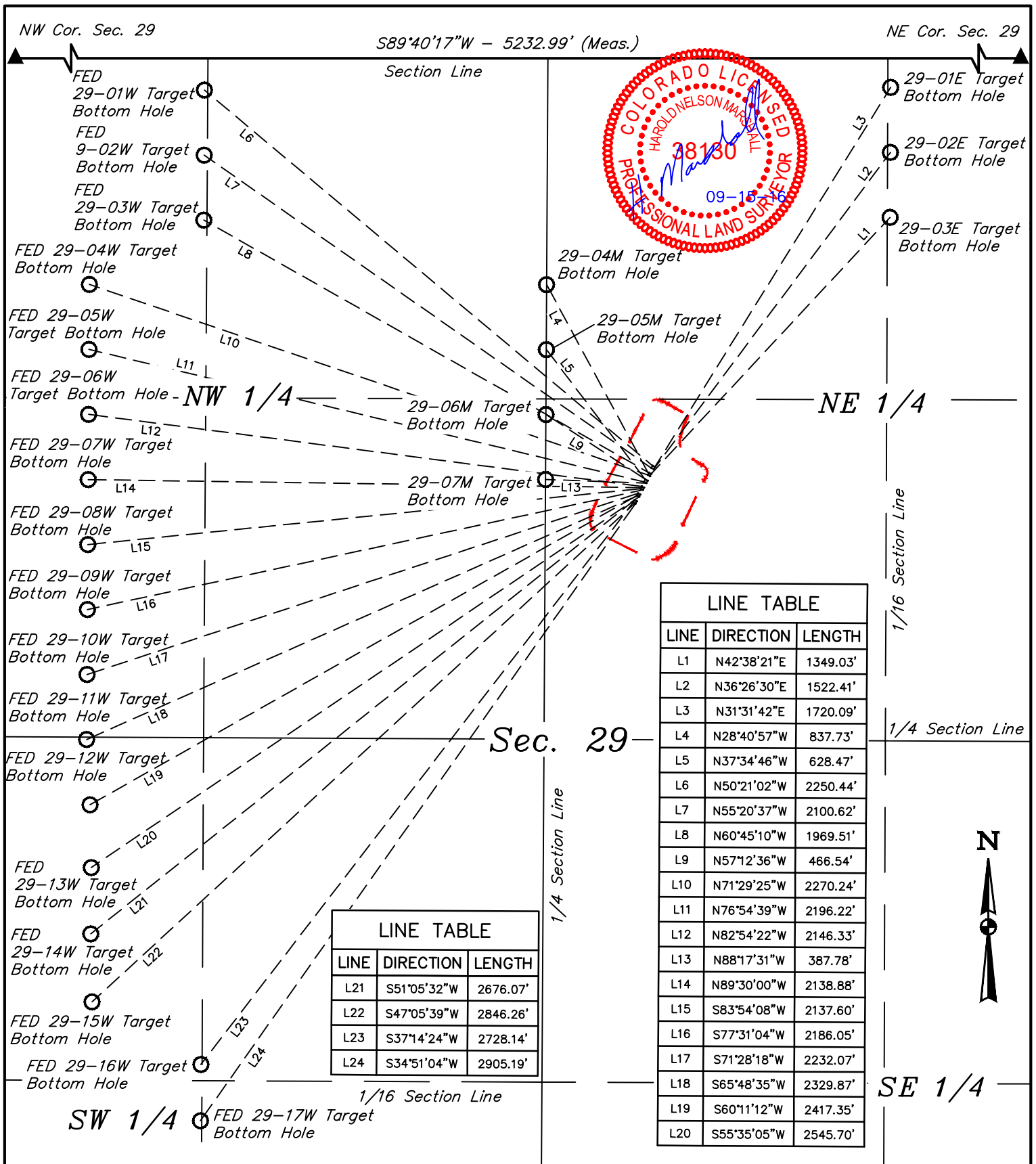
PICEANCE 29-07 PAD
SW 1/4 NE 1/4, SECTION 29, T9S, R93W, 6th P.M.
MESA COUNTY, COLORADO

UELS, LLC

Corporate Office * 85 South 200 East
Vernal, UT 84078 * (435) 789-1017

SURVEYED BY	BRIAN BAKER, B.B.	02-27-15	SCALE
DRAWN BY	S.S.	09-13-16	1" = 100'
TARGET BOTTOM HOLE DRAWING		FIGURE #6	





NOTES:

LARAMIE ENERGY, LLC

PICEANCE 29-07 PAD
SW 1/4 NE 1/4, SECTION 29, T9S, R93W, 6th P.M.
MESA COUNTY, COLORADO



UELS, LLC
Corporate Office * 85 South 200 East
Vernal, UT 84078 * (435) 789-1017

SURVEYED BY	BRIAN BAKER, B.B.	02-27-15	SCALE
DRAWN BY	S.S.	09-13-16	1" = 500'
MULTI-WELL PLAN		FIGURE #7	