

# HALLIBURTON

iCem<sup>®</sup> Service

## **WPX ENERGY ROCKY MOUNTAIN LLC-EBUS**

**For: Mark Mewshaw**

Date: Friday, June 17, 2016

**GM 42-8 Surface**

**API # 05-045-22532-00**

**Sincerely,**

**Grand Junction Cement Engineering**

## 2.0 Real-Time Job Summary

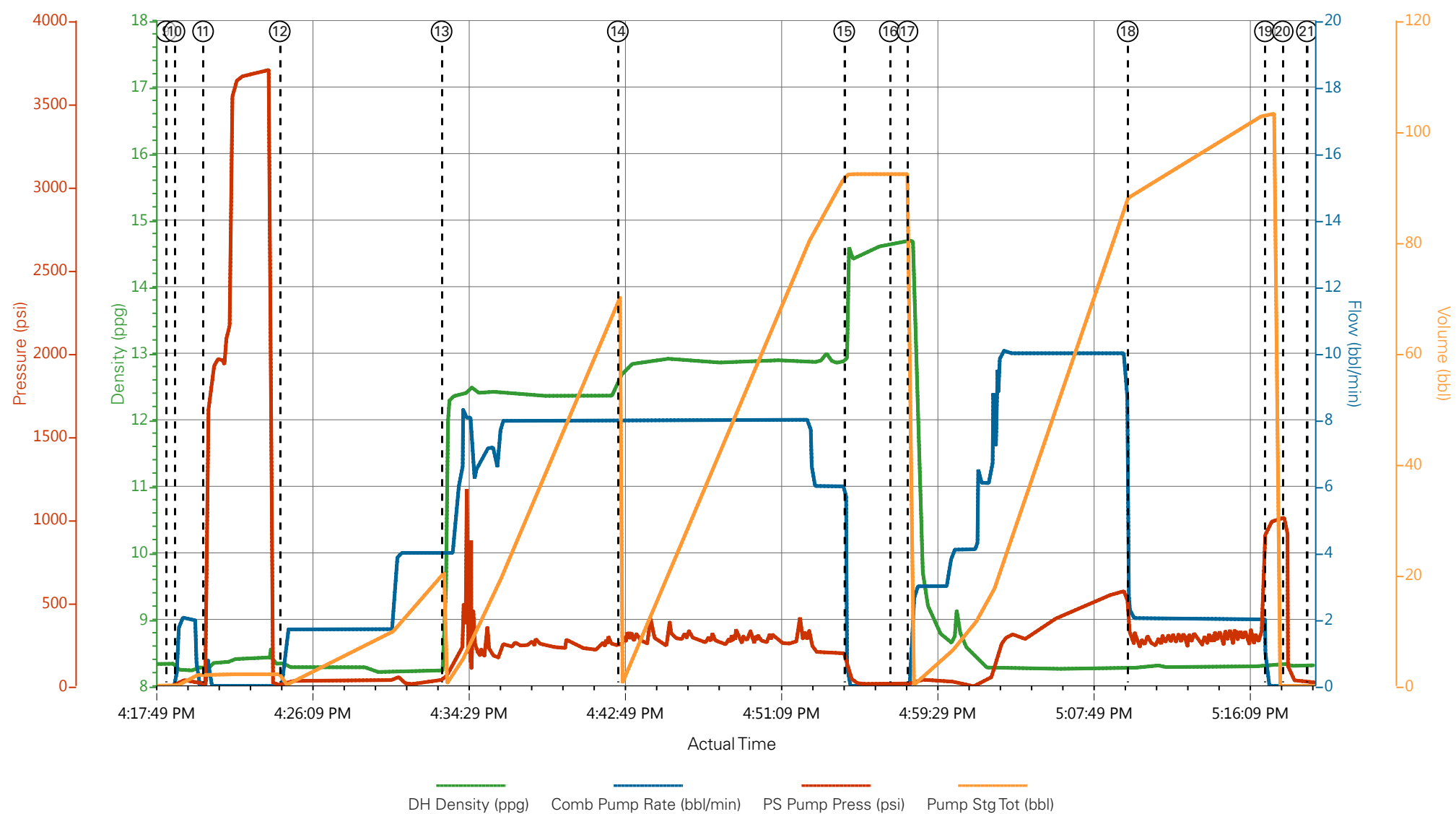
## 2.1 Job Event Log

Type	Seq. No.	Graph Label	Date	Time	Source	DH Density (ppg)	Comb Pump Rate (bbl/min)	PS Pump Press (psi)	Pump Stg Tot (bbl)	Comments
Event	1	Call Out	6/17/2016	08:30:00	USER					ELITE #8
Event	2	Pre-Convoy Safety Meeting	6/17/2016	10:30:00	USER					ALL HES EMPLOYEES
Event	3	Arrive At Loc	6/17/2016	12:30:00	USER					ARRIVED ON LOCATION 1 1/2 HOURS EARLY. DIDNT START CHARGING TIME UNTIL REQUESTED ON LOCATION TIME RIG POOH W/ DP UPON HES ARRIVAL
Event	4	Meet With Company Rep	6/17/2016	13:00:00	USER					COMPANY REP OFFERED SDS WATER TEST: TEMP: 65 PH: 7 CHLORIDES: 0
Event	5	Assessment Of Location Safety Meeting	6/17/2016	15:00:00	USER					ALL HES EMPLOYEES
Event	6	Pre-Rig Up Safety Meeting	6/17/2016	15:15:00	USER					ALL HES EMPLOYEES
Event	7	Rig-Up Equipment	6/17/2016	15:30:00	USER					1 HT-400 PUMP TRUCK (ELITE #8) 1 660 BULK TRUCK 1 F-550 PICKUP
Event	8	Pre-Job Safety Meeting	6/17/2016	16:00:00	USER					ALL HES EMPLOYEES AND RIG CREW RIG CIRCULATED @ 15.8 BPM PRIOR TO THE JOB
Event	9	Start Job	6/17/2016	16:18:30	COM5					TD: 1185 TP: 1175 SJ: 46 CSG: 9 5/8 32.2# H-40 OH: 13 1/2 18" CONDUCTOR@ 87' MUD WT: 9.0 PPG
Event	10	Prime Lines	6/17/2016	16:18:57	COM5	8.33	2.0	40	2.0	PRIME LINES WITH 2 BBLS FRESH WATER
Event	11	Test Lines	6/17/2016	16:20:28	COM5	8.33	0.0	3694	2.0	PRESSURE TEST OK
Event	12	Pump Fresh Water Spacer	6/17/2016	16:24:34	COM5	8.33	4.0	30	20	PUMP 20 BBL FRESH WATER SPACER
Event	13	Pump Lead Cement	6/17/2016	16:33:12	COM5	12.3	8.0	250	61.5	145 SKS VariCem GJ1 12.3 PPG 2.38 YIELD 13.77 GAL/SK LEAD CEMENT WEIGHT VERIFIED VIA PRESSURIZED MUD SCALES
Event	14	Pump Tail Cement	6/17/2016	16:42:36	COM5	12.8	8.0	288	71.4	190 SKS VariCem GJ1 12.8 PPG 2.11 YIELD 11.78 GAL/SK

TAIL CEMENT WEIGHT VERIFIED VIA PRESSURIZED MUD  
SCALES

Event	15	Shutdown	6/17/2016	16:54:40	USER					SHUTDOWN TO DROP PLUG
Event	16	Drop Top Plug	6/17/2016	16:57:06	COM5					PLUG AWAY NO PROBLEMS WASHED UP ON TOP OF PLUG AS PER COMPANY REP
Event	17	Pump Displacement	6/17/2016	16:58:03	COM5	8.33	10.0	570	88.9	FRESH WATER DISPLACEMENT
Event	18	Slow Rate	6/17/2016	17:09:48	COM5	8.33	2.0	300	78	SLOW RATE
Event	19	Bump Plug	6/17/2016	17:17:07	COM5	8.33	2.0	1013	88.9	PSI BEFORE BUMPING PLUG @ 300 BUMPED PLUG UP TO 1013 PSI
Event	20	Check Floats	6/17/2016	17:18:04	COM5					FLOATS HELD 1/2 BBL BACK TO DISPLACEMENT TANKS
Event	21	End Job	6/17/2016	17:19:21	COM5					GOOD RETURNS THROUGHOUT JOB 20 BBLs CEMENT TO SURFACE RIG USED 40#s OF SUGAR
Event	22	Pre-Rig Down Safety Meeting	6/17/2016	17:25:00	USER					ALL HES EMPLOYEEES
Event	23	Rig-Down Equipment	6/17/2016	17:35:00	USER					
Event	24	Pre-Convoy Safety Meeting	6/17/2016	17:50:00	USER					ALL HES EMPLOYEES
Event	25	Crew Leave Location	6/17/2016	18:00:00	USER					THANK YOU FOR USING HALLIBURTON CEMENT, DUSTIN SMITH AND CREW

WPX - FEDERAL GM 42-8 - 9 5/8 SURFACE



① Call Out	⑥ Pre-Rig Up Safety Meeting	⑪ Test Lines	⑯ DropTop Plug	21 End Job
② Pre-Convoy Safety Meeting	⑦ Rig-Up Equipment	⑫ Pump Fresh Water Spacer	⑰ Pump Displacement	22 Pre-Rig Down Safety Meeting
③ Arrive At Loc	⑧ Pre-Job Safety Meeting	⑬ Pump Lead Cement	⑱ Slow Rate	23 Rig-Down Equipment
④ Meet With Company Rep	⑨ Start Job	⑭ PumpTail Cement	⑲ Bump Plug	24 Pre-Convoy Safety Meeting
⑤ Assessment Of Location Safety Meeting	⑩ Prime Lines	⑮ Shutdown	20 Check Floats	25 Crew Leave Location

# WPX - FEDERAL GM 42-8 - 9 5/8 SURFACE

