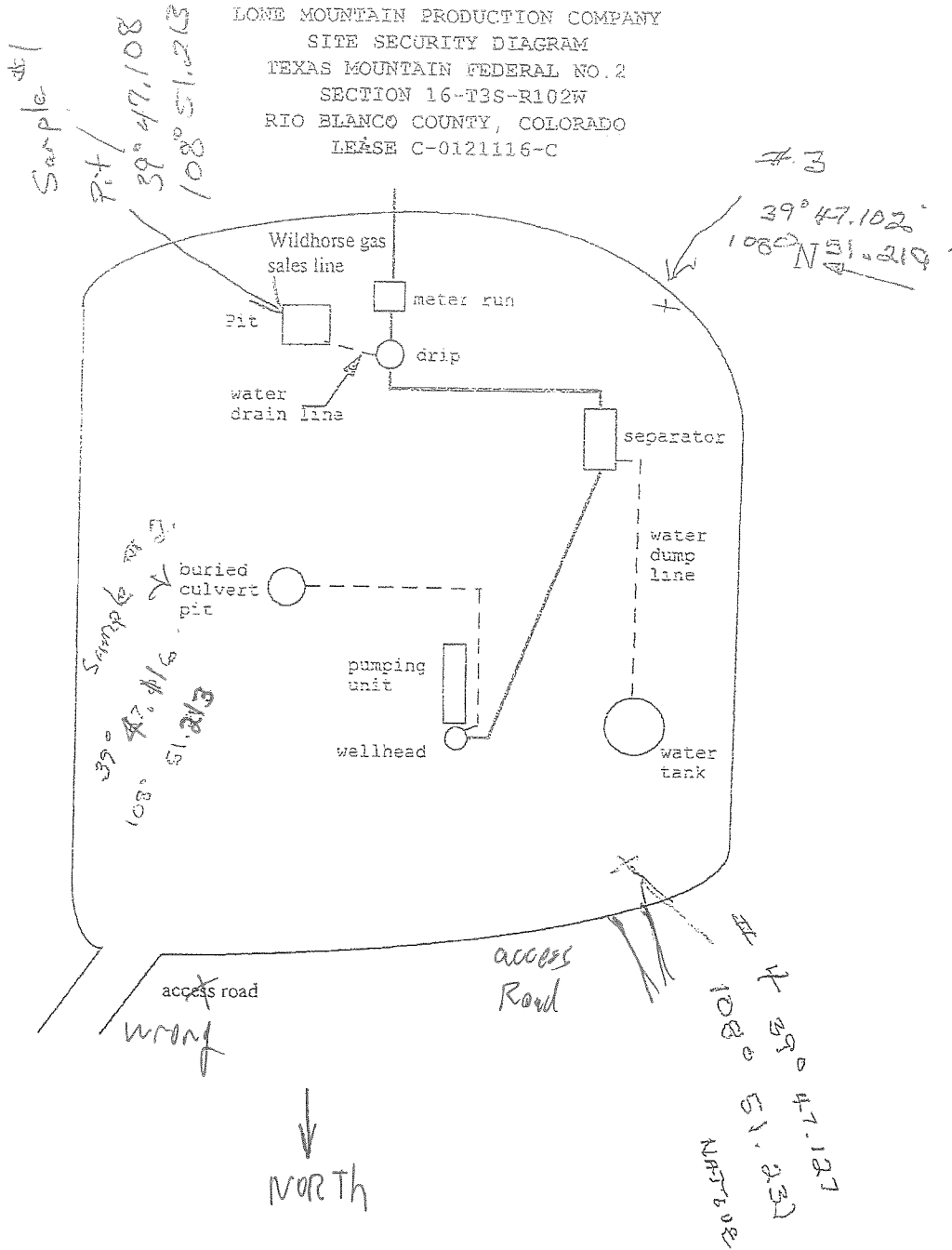


LONE MOUNTAIN PRODUCTION COMPANY
 SITE SECURITY DIAGRAM
 TEXAS MOUNTAIN FEDERAL NO. 2
 SECTION 16--T3S-R102W
 RIO BLANCO COUNTY, COLORADO
 LEASE C-0121116-C





Texas Min No. 2 samples take September 13, 2016

<u>Sample No.</u>	<u>Latitude</u> <u>degrees</u>	<u>minutes</u>	<u>seconds</u>	<u>longitude</u> <u>degrees</u>	<u>minutes</u>	<u>seconds</u>	<u>Latitude</u> <u>decimal</u>	<u>longitude</u> <u>decimal</u>
1	39	47	6.48	108	51	12.78	39.785133	108.853550
2	39	47	6.96	108	51	12.78	39.785267	108.853550
3	39	47	6.12	108	51	13.14	39.785033	108.853650
4	39	47	7.62	108	51	13.86	39.785450	108.853850

Sample No. 1 is from pit No. 107470 , taken from approximately 4'-4 1/2' deep.

Sample No. 2 is from pit No. 112693, taken from approximately 4'-4 1/2' deep.

Sample No. 3 is a control sample from the fill side of the location, taken from approximately 4'-4 1/2' deep.

Sample No. 4 is a control sample from the cut side of the location, taken from approximately 1' deep.

