



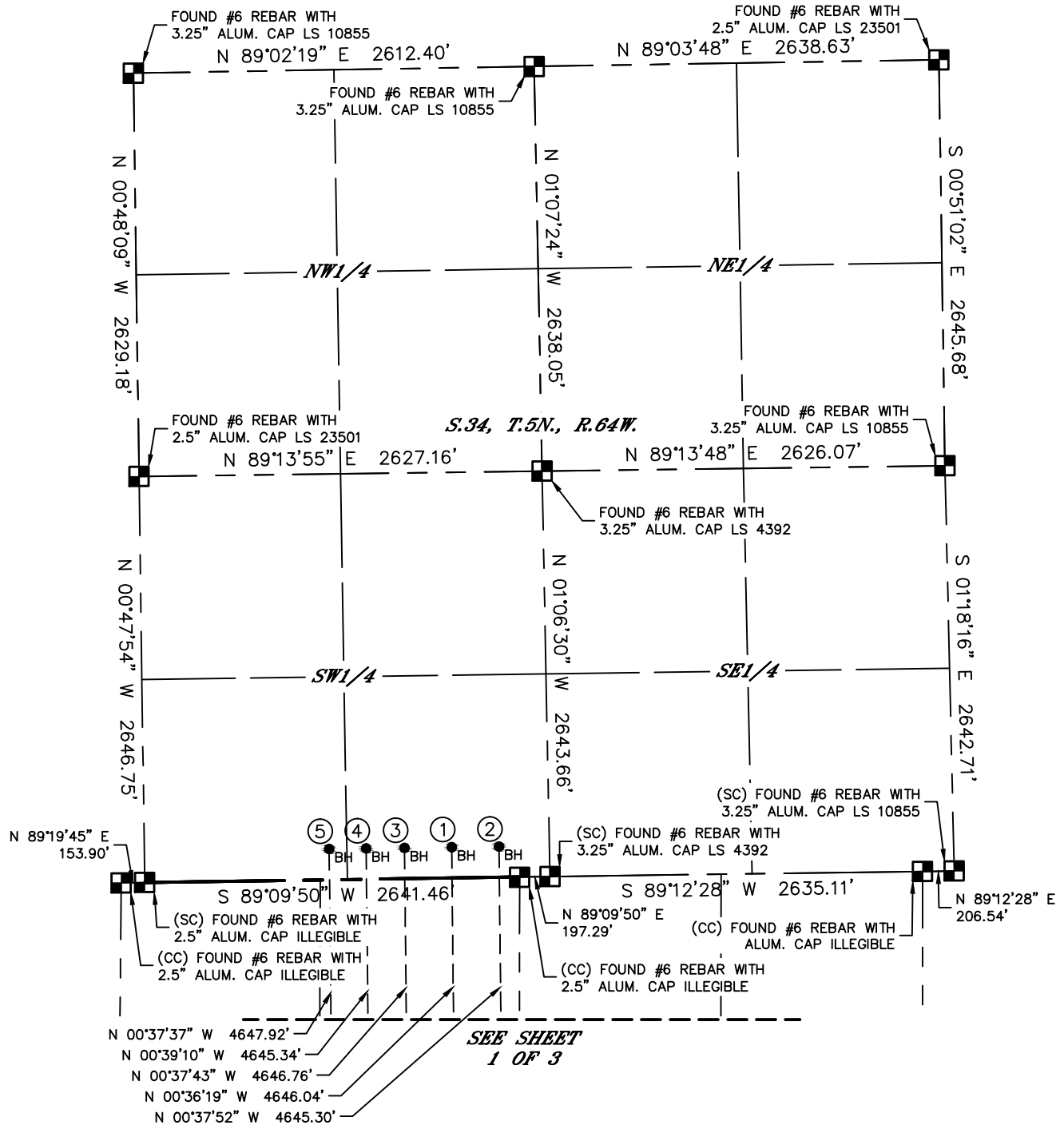
Lat40°, Inc. 6250 W. 10th Street, Unit 2, Greeley, CO 970-515-5294

MULTI-WELL PLAN

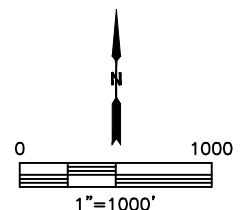
POPHAM 4N64W3Q PAD

SECTION: 3
TOWNSHIP: 4N
RANGE: 64W
6TH. P.M.
WELD COUNTY, CO

THIS MAP DOES NOT REPRESENT A BOUNDARY SURVEY



#	WELL NAME	BHL FOOTAGE				BHL LAT °	BHL LONG °	BHL S-T-R
1	POPHAM 3P-341	200	FSL	2004	FWL	40.34912	-104.53794	34-5-64
2	POPHAM 3P-241	200	FSL	2312	FWL	40.34913	-104.53683	34-5-64
3	POPHAM 3B-221	200	FSL	1696	FWL	40.34912	-104.53904	34-5-64
4	POPHAM 3B-301	200	FSL	1446	FWL	40.34912	-104.53994	34-5-64
5	POPHAM 3B-201	200	FSL	1205	FWL	40.34911	-104.54081	34-5-64





Lat40°, Inc. 6250 W. 10th Street, Unit 2, Greeley, CO 970-515-5294

MULTI-WELL PLAN

POPHAM 4N64W3Q PAD

SECTION: 3
TOWNSHIP: 4N
RANGE: 64W
6TH. P.M.
WELD COUNTY, CO

