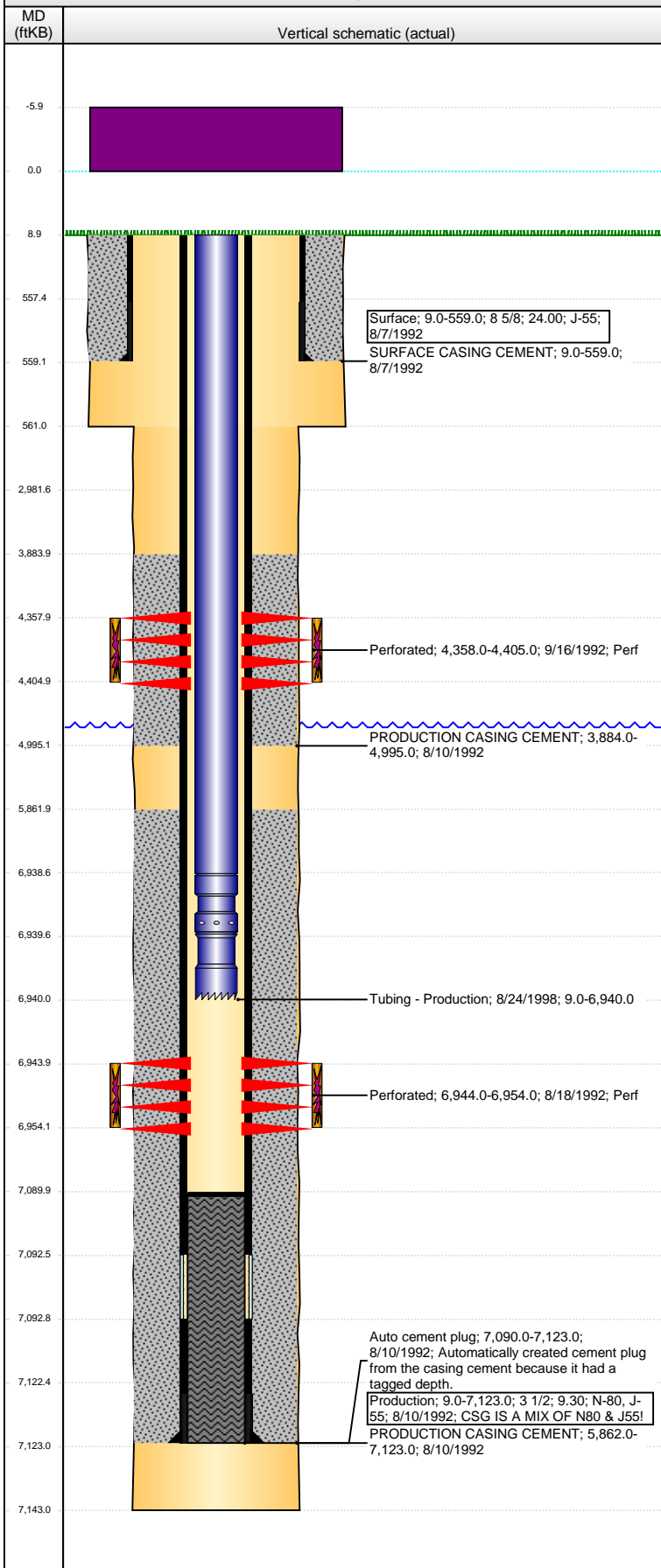


Well Name: SPIKE STATE D14-14

VERTICAL - ORIGINAL HOLE, 9/26/2016 10:34:46 AM



Well Header						
API 05-123-16034	Business Unit DJ BASIN		District 15		Well Config VERTICAL	
Original KB Elevation (ft) 4,829	KB - GL / MSL (ftKB) 9.00		Spud Date 8/6/1992		P & A Date	
Comment CASING IS A MIXTURE OF N-80 & J-55						
Directions To Well						
Congressional Location						
Quarter 3 SE	Quarter 4 SW	Section 14	Township 3	TwNShp N/S Dir N	Range 64	Range E/W Dir W
Bottom Hole Location						
North-South Distance (ft)		From N or S Line		East-West Distance (ft)		From E or W Line
Plug Back Total Depths						
Date	Depth (ftKB)	Method		Com		
8/10/1992	7,090.0	CASING TALLY		GUIDE SHOE		
Wellbore Sections						
Section Des		Size (in)		Act Top, MD (ftKB)		Act Btm, MD (ftKB)
SURFACE		12 1/4		9		561
PRODUCTION		7 7/8		561		7,143
Zone Statuses						
Zone Name	Status Date	Status	Fluid Type	Job	Prod Method	
SUSSEX	10/8/1992	PR	Oil	DRILLING/CO...		
SUSSEX	3/22/1993	PR	Oil	COMMINGLE...		
CODELL	9/4/1992	SI	Oil	DRILLING/CO...		
CODELL	3/22/1993	PR	Oil	COMMINGLE...		
Casing Strings						
Surface, 559.0ftKB						
Casing Description Surface	Run Date 8/7/1992	OD (in) 8 5/8	Wt/Len (l... 24.00	Grade J-55	Top, MD (ft... 9.0	MD (ftKB) 559.0
Production, 7,123.0ftKB						
Casing Description Production	Run Date 8/10/1992	OD (in) 3 1/2	Wt/Len (l... 9.30	Grade N-80	Top, MD (ft... 9.0	MD (ftKB) 7,123.0
Cement						
Description SURFACE CASING CEMENT				Top Depth (ftKB) 9.0		Bottom Depth (ftKB) 559.0
Description PRODUCTION CASING CEMENT				Top Depth (ftKB) 3,884.0		Bottom Depth (ftKB) 4,995.0
Description PRODUCTION CASING CEMENT				Top Depth (ftKB) 5,862.0		Bottom Depth (ftKB) 7,123.0
Tubing Strings						
Tubing Description Tubing - Production	Run Date 8/24/1998	String... 2 1/16	ID (in) 1.751	Wt (lb/ft) 3.25	Grade J-55	Len (ft) 6,931.00
Tubing Components						
Item Des	OD (in)	Wt (lb/ft)	Grade	Jts	Len (ft)	Btm (TVD) (ftKB)
Tubing	2 1/16	3.25	J-55	217	6,929.60	6,938.6
Seal Nipple	2 1/16			1	1.00	6,939.6
Notched collar	2 1/16			1	0.40	6,940.0
Perforation Data						
Zone	Bnch/St g	Entered Shot Total	Top (ftKB)		Btm (ftKB)	Date
SUSSEX, ORIGINAL HOLE		60	4,358.00		4,405.00	9/16/1992
CODELL, ORIGINAL HOLE		40	6,944.00		6,954.00	8/18/1992
Stimulations & Treatments						
Date 8/27/1992	Zone CODELL, ORIGINAL HOLE		Primary Job Type DRILLING/COMPLETION - ORIGINAL			
Technical Result		Tech Result Details			Tech Result Note	
Comment						

Well Name: SPIKE STATE D14-14

VERTICAL - ORIGINAL HOLE, 9/26/2016 10:34:47 AM

Stimulations & Treatments

Date 9/16/1992	Zone SUSSEX, ORIGINAL HOLE	Primary Job Type DRILLING/COMPLETION - ORIGINAL
Technical Result	Tech Result Details	Tech Result Note
Comment		

Other In Hole

Run Date	Des	OD (in)	Top (ftKB)	Btm (ftKB)

Logs

Date	Type	Top, MD (ftKB)	Btm, MD (ftKB)
8/9/1992	COMPENSATED DENSITY	440.0	7,130.0
8/9/1992	INDUCTION	4,200.0	4,600.0
8/18/1992	CEMENT BOND	3,750.0	7,022.0

