

T6N, R81W, 6th P.M.

Sandridge Exploration & Production, LLC

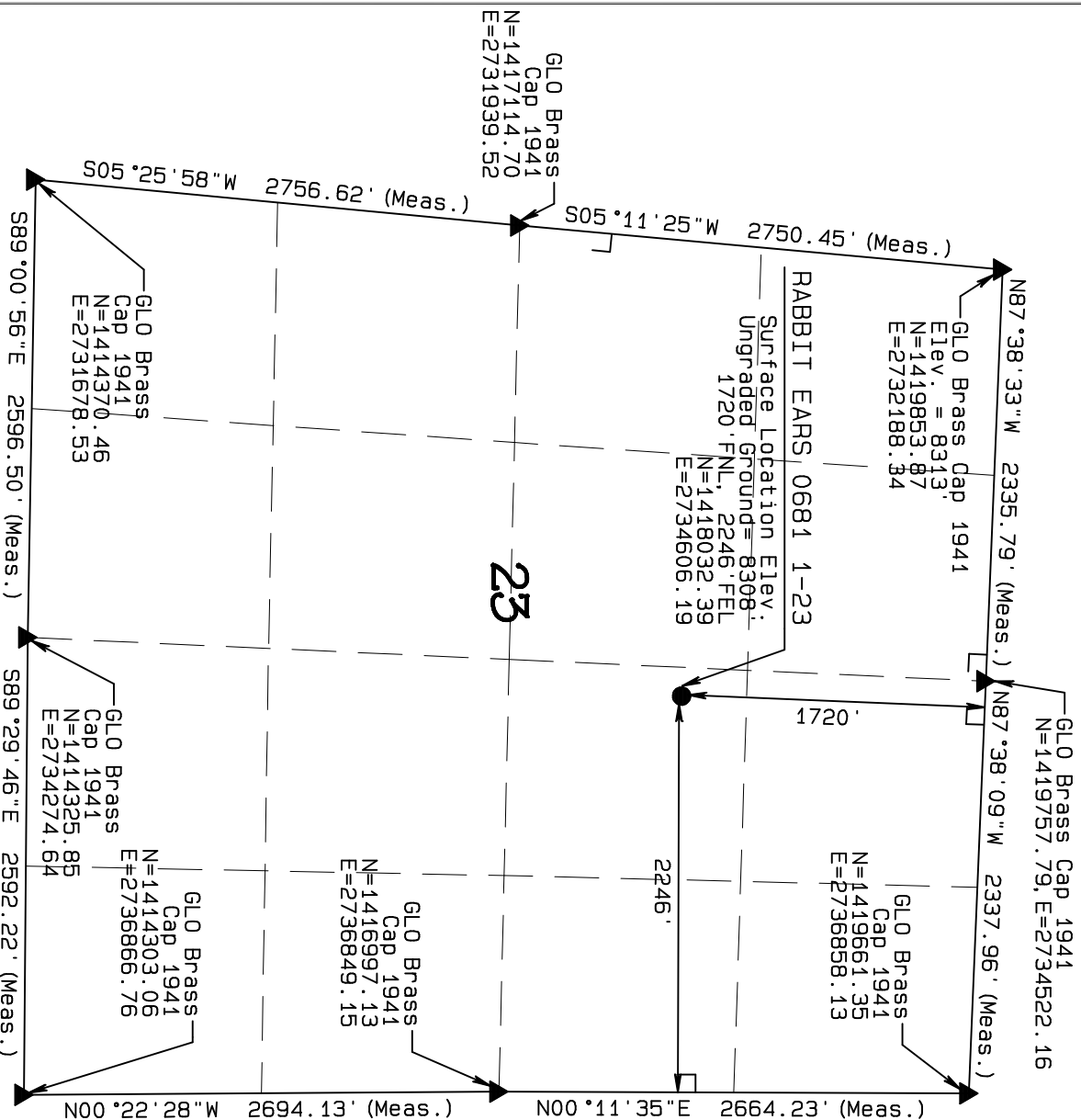
Well location, RABBIT EARS UNIT 0681 1-23 located as shown in the SW1/4NE1/4 of Section 23, T6N, R81W, 6th P.M., Jackson County, Colorado.

BASIS OF BEARINGS:

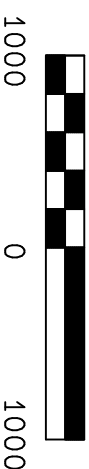
US STATE PLANE 1983
CO NORTH 0501 GRID

BASIS OF ELEVATION

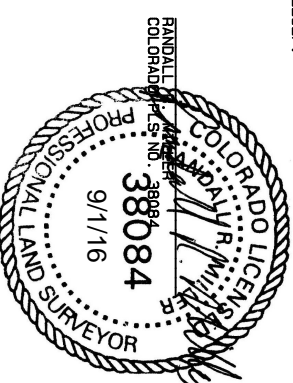
SPOT ELEVATION AT THE NW CORNER OF SECTION 23, T6N, R81W, 6TH PM, TAKEN FROM THE SPICER PEAK QUADRANGLE, USGS 7.5 MIN QUAD (TOPOGRAPHIC MAP) WITH SAID ELEVATION MARKED AS BEING 8313 FEET.



GRAPHIC SCALE 1"=1000'



THIS IS TO CERTIFY THAT THE ABOVE PLAT WAS PREPARED FROM THE RECORDS OF ACTUAL SURVEYS MADE BY ME OR UNDER MY SUPERVISION AND THAT THE SAME ARE TRUE AND CORRECT TO THE BEST OF MY KNOWLEDGE AND BELIEF.



NORTH PARK ENGINEERING & CONSULTING, INC.

P.O. BOX 395
WALDEN, CO 80480
(970) 723-3725

NAD 83 (SURFACE LOCATION)

LATITUDE=40.476982°N
LONGITUDE=106.454006°W
PDOP = 1.270

LEGEND
90° SYMBOL
FOUND CORNER
PROPOSED WELL
PROPOSED BHL/LPL

DATE OF FIELD WORK: MAR 20, 2016
DRAWING COMPLETION: MAY 26, 2016
SURVEYED BY: ADL
DRAWN BY: TKH
CHECKED BY: RHM
REVISED: 9/1/2016