

PDC ENERGY

**WELD COUNTY, COLORADO
SW NW SEC. 6 T6N R64W 6th P.M.
BENNETT 6F-332**

ORIGINAL WELLBORE

13 April, 2016

Plan: PROPOSAL #1





Project: WELD COUNTY, COLORADO
Site: SW NW SEC. 6 T6N R64W 6th P.M.
Well: BENNETT 6F-332
Wellbore: ORIGINAL WELLBORE
Design: PROPOSAL #1

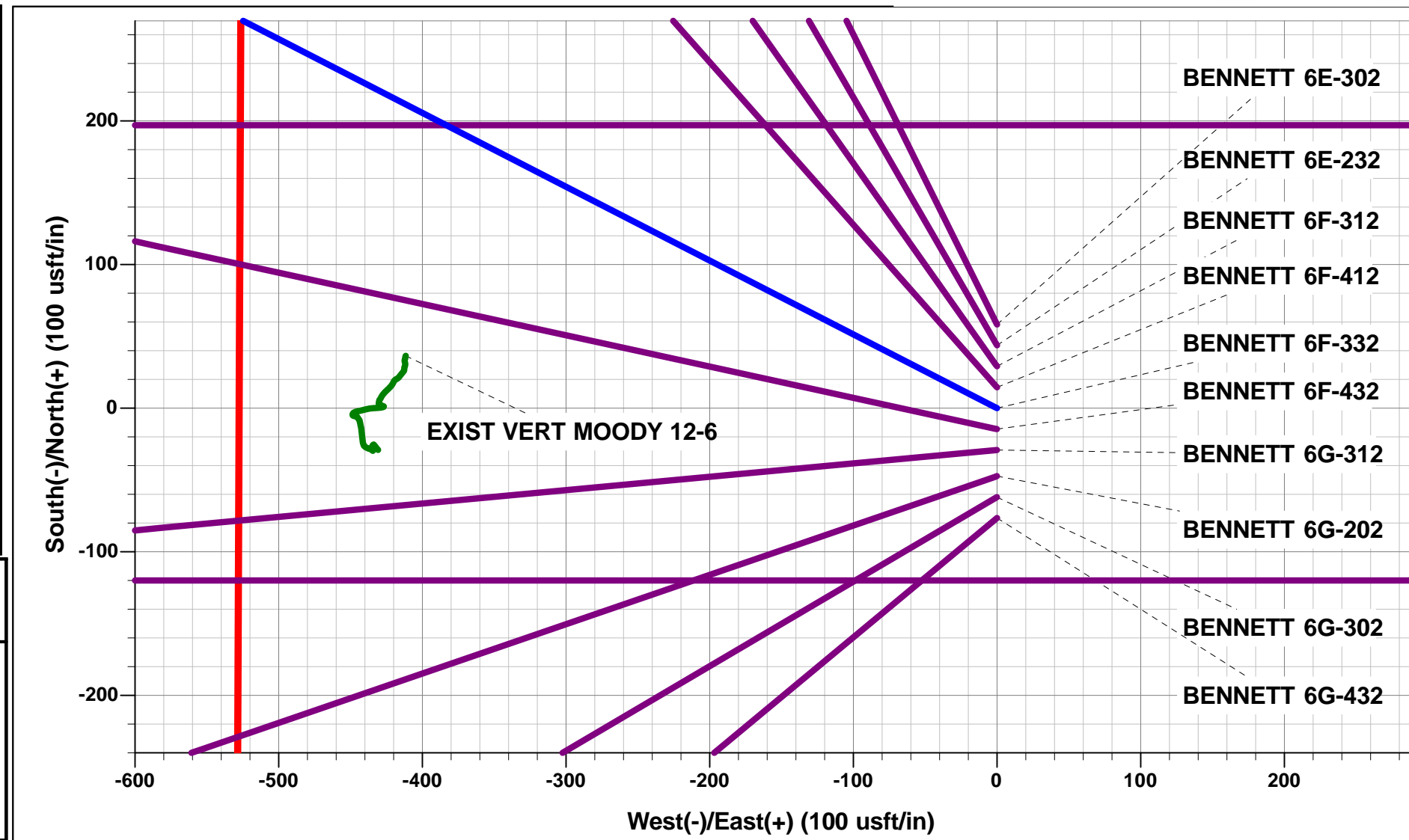


ANNOTATIONS

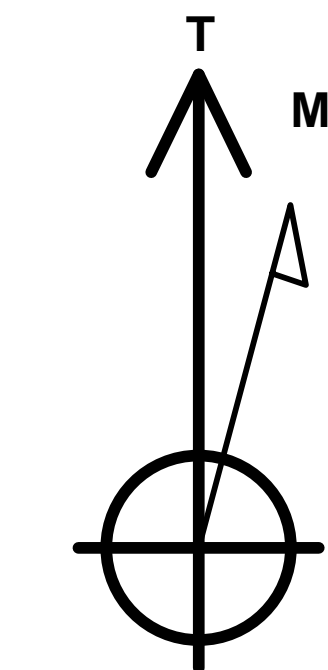
TVD	MD	Inc	Azi	+N/-S	+E/-W	VSec	Dep	Annotation
0.0	0.0	0.00	0.00	0.0	0.0	0.0	0.0	SHL: 2125ft FNL & 98ft FWL of Sec 6
700.0	700.0	0.00	0.00	0.0	0.0	0.0	0.0	START NUDGE (2°/100ft BUR)
1313.7	1318.5	12.37	297.20	30.4	-59.2	-54.3	66.5	EOB TO 12.37° INC
5688.2	5796.9	12.37	297.20	469.0	-912.4	-837.1	1025.9	END OF TANGENT
6301.9	6415.5	0.00	0.00	499.4	-971.6	-891.4	1092.4	EOD TO VERTICAL
6331.9	6445.5	0.00	0.00	499.4	-971.6	-891.4	1092.4	KOP (8°/100ft BUR)
7048.0	7580.0	90.76	90.00	499.4	-245.9	-173.0	1818.1	HZ LANDING PNT *NEW*: 1618.1ft FNL & 740.7ft FWL of Sec 6
6998.0	11329.5	90.77	90.00	499.4	3503.3	3538.7	5567.3	BHL: 1673ft FNL & 500ft FEL of Sec 6

WELLBORE TARGET DETAILS (LAT/LONG)

Name	TVD	+N/-S	+E/-W	Latitude	Longitude
KOP - BENNETT 6F-332	6331.9	499.4	-971.6	40.517681	-104.601515
BHL - BENNETT 6F-332	6998.0	499.4	3503.3	40.517680	-104.585420
HZ LANDING PNT *NEW* - BENNETT 6F-332	7048.0	499.4	-245.9	40.517681	-104.598904

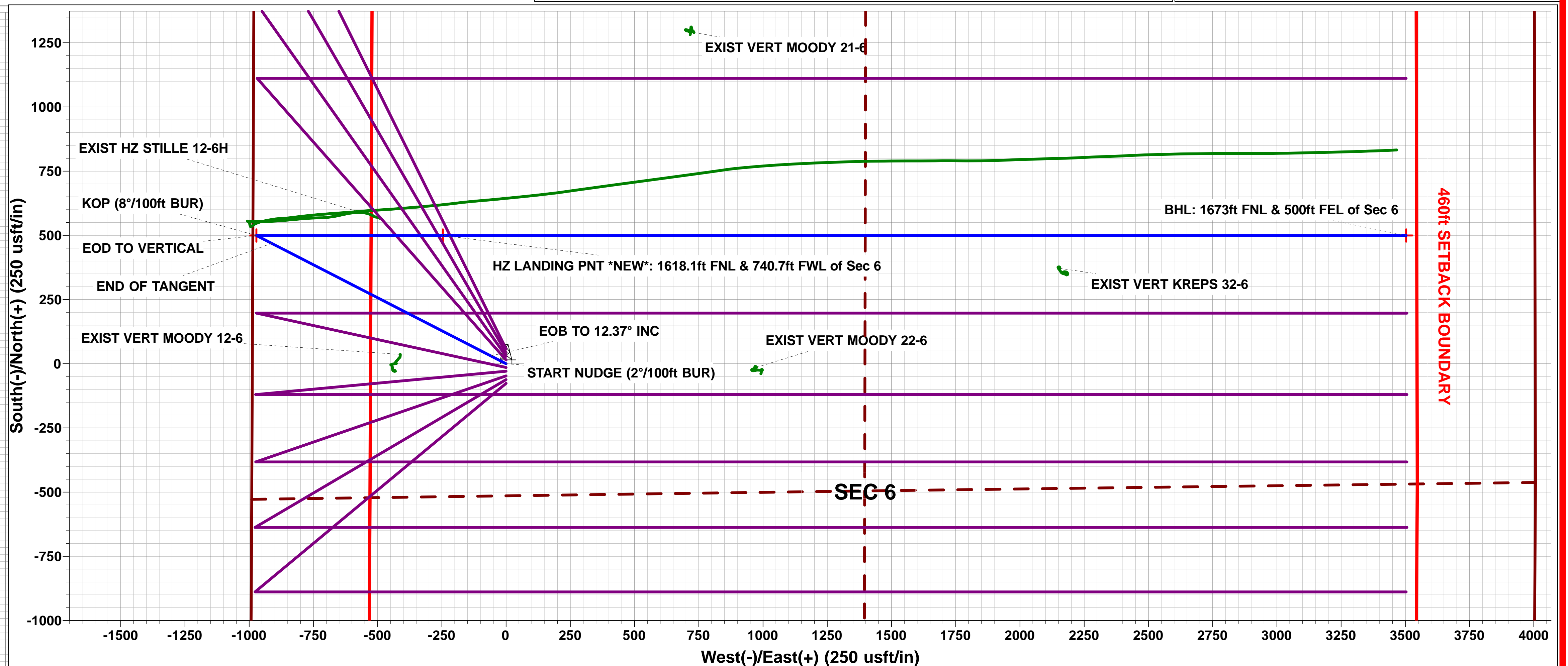
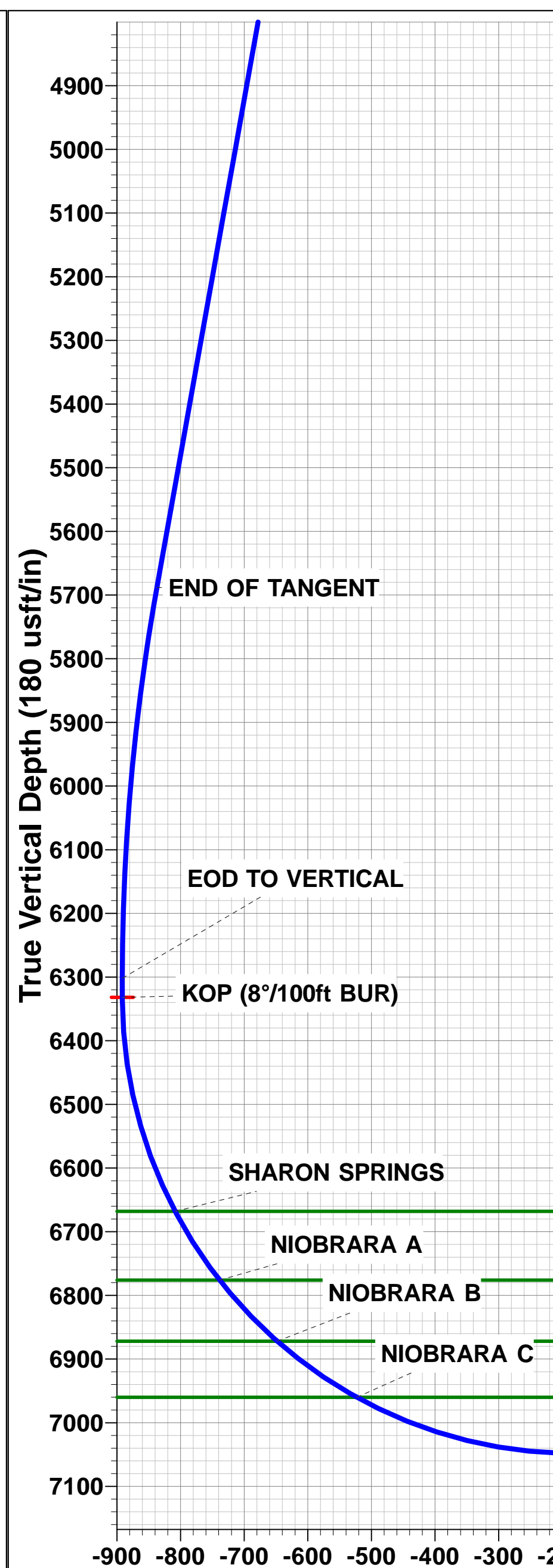
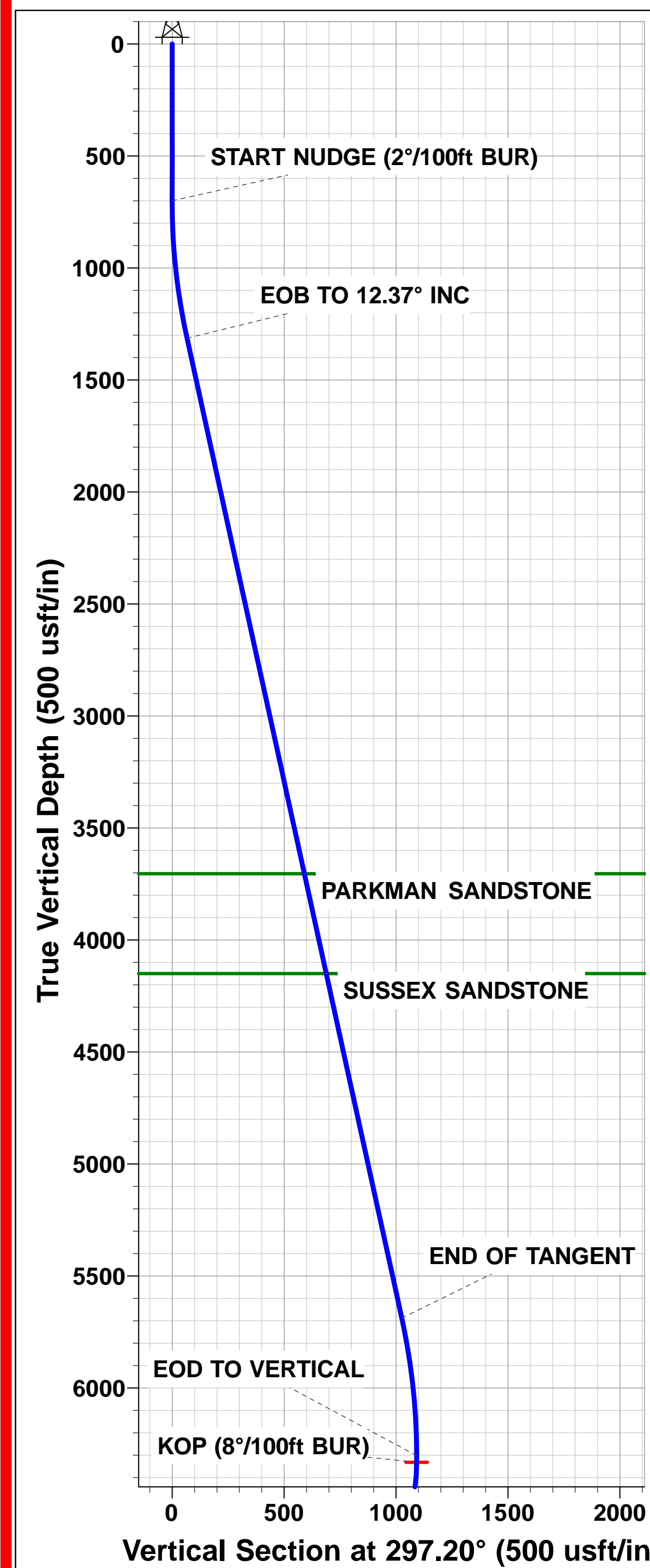


PROPOSED LOCAL COORDINATES:
SHL: 2125ft FNL & 988ft FWL of Sec 6
HZ LP *NEW*: 1618.1ft FNL & 740.7ft FWL of Sec 6
BHL: 1673ft FNL & 500ft FEL of Sec 6



Azimuths to True North
Magnetic North: 8.26°

Magnetic Field
Strength: 52604.8snT
Dip Angle: 67.00°
Date: 13/04/2016
Model: IGRF2015



Planning Report



Database:	EDM 5000.1 Single User Db	Local Co-ordinate Reference:	Well BENNETT 6F-332
Company:	PDC ENERGY	TVD Reference:	KB-EST @ 4797.0usft (Original Well Elev)
Project:	WELD COUNTY, COLORADO	MD Reference:	KB-EST @ 4797.0usft (Original Well Elev)
Site:	SW NW SEC. 6 T6N R64W 6th P.M.	North Reference:	True
Well:	BENNETT 6F-332	Survey Calculation Method:	Minimum Curvature
Wellbore:	ORIGINAL WELLBORE		
Design:	PROPOSAL #1		

Project	WELD COUNTY, COLORADO		
Map System:	US State Plane 1983	System Datum:	Mean Sea Level
Geo Datum:	North American Datum 1983		
Map Zone:	Colorado Northern Zone		Using geodetic scale factor

Site	SW NW SEC. 6 T6N R64W 6th P.M.		
Site Position:		Northing:	1,432,131.26usft
From:	Lat/Long	Easting:	3,250,776.23usft
Position Uncertainty:	0.0 usft	Slot Radius:	1.10000ft
		Latitude:	40.516100
		Longitude:	-104.598020
		Grid Convergence:	0.58 °

Well	BENNETT 6F-332		
Well Position	+N/-S	76.5 usft	Northing:
	+E/-W	0.0 usft	Easting:
Position Uncertainty	0.0 usft		Wellhead Elevation:
			Latitude:
			Longitude:
			Ground Level:

Wellbore	ORIGINAL WELLBORE				
Magnetics	Model Name	Sample Date	Declination (°)	Dip Angle (°)	Field Strength (nT)
	IGRF2015	13/04/2016	8.26	67.00	52,605

Design	PROPOSAL #1				
Audit Notes:					
Version:	Phase:	PROTOTYPE	Tie On Depth:	0.0	
Vertical Section:	Depth From (TVD) (usft)	+N/-S (usft)	+E/-W (usft)	Direction (°)	
	6,998.0	0.0	0.0	81.89	

Plan Sections											
MD (usft)	Inc (°)	Azi (°)	Vertical Depth	SS (usft)	+N/-S (usft)	+E/-W (usft)	Dogleg Rate (°/100usf)	Build Rate (°/100usf)	Turn Rate (°/100usf)	TFO (°)	Target
0.0	0.00	0.00	0.0	-4,797.0	0.0	0.0	0.00	0.00	0.00	0.00	
700.0	0.00	0.00	700.0	-4,097.0	0.0	0.0	0.00	0.00	0.00	0.00	
1,318.5	12.37	297.20	1,313.7	-3,483.3	30.4	-59.2	2.00	2.00	0.00	297.20	
5,796.9	12.37	297.20	5,688.2	891.2	469.0	-912.4	0.00	0.00	0.00	0.00	
6,415.5	0.00	0.00	6,301.9	1,504.9	499.4	-971.6	2.00	-2.00	0.00	180.00	
6,445.5	0.00	0.00	6,331.9	1,534.9	499.4	-971.6	0.00	0.00	0.00	0.00	KOP - BENNETT 6F
7,580.0	90.76	90.00	7,048.0	2,251.0	499.4	-245.9	8.00	8.00	0.00	90.00	
11,329.5	90.77	90.00	6,998.0	2,201.0	499.4	3,503.3	0.00	0.00	0.00	4.99	BHL - BENNETT 6F

Planning Report



Database:	EDM 5000.1 Single User Db	Local Co-ordinate Reference:	Well BENNETT 6F-332
Company:	PDC ENERGY	TVD Reference:	KB-EST @ 4797.0usft (Original Well Elev)
Project:	WELD COUNTY, COLORADO	MD Reference:	KB-EST @ 4797.0usft (Original Well Elev)
Site:	SW NW SEC. 6 T6N R64W 6th P.M.	North Reference:	True
Well:	BENNETT 6F-332	Survey Calculation Method:	Minimum Curvature
Wellbore:	ORIGINAL WELLBORE		
Design:	PROPOSAL #1		

Planned Survey

MD (usft)	Inc (°)	Azi (°)	TVD (usft)	SS (usft)	+N/-S (usft)	+E/-W (usft)	Vertical Section (usft)	Dogleg Rate (°/100usft)	Build Rate (°/100usft)	Turn Rate (°/100usft)
SHL: 2125ft FNL & 98ft FWL of Sec 6										
0.0	0.00	0.00	0.0	4,797.00	0.0	0.0	0.0	0.00	0.00	0.00
100.0	0.00	0.00	100.0	4,697.00	0.0	0.0	0.0	0.00	0.00	0.00
200.0	0.00	0.00	200.0	4,597.00	0.0	0.0	0.0	0.00	0.00	0.00
300.0	0.00	0.00	300.0	4,497.00	0.0	0.0	0.0	0.00	0.00	0.00
400.0	0.00	0.00	400.0	4,397.00	0.0	0.0	0.0	0.00	0.00	0.00
500.0	0.00	0.00	500.0	4,297.00	0.0	0.0	0.0	0.00	0.00	0.00
600.0	0.00	0.00	600.0	4,197.00	0.0	0.0	0.0	0.00	0.00	0.00
START NUDGE (2°/100ft BUR)										
700.0	0.00	0.00	700.0	4,097.00	0.0	0.0	0.0	0.00	0.00	0.00
800.0	2.00	297.20	800.0	3,997.02	0.8	-1.6	-1.4	2.00	2.00	0.00
900.0	4.00	297.20	899.8	3,897.16	3.2	-6.2	-5.7	2.00	2.00	0.00
1,000.0	6.00	297.20	999.5	3,797.55	7.2	-14.0	-12.8	2.00	2.00	0.00
1,100.0	8.00	297.20	1,098.7	3,698.30	12.7	-24.8	-22.7	2.00	2.00	0.00
1,200.0	10.00	297.20	1,197.5	3,599.53	19.9	-38.7	-35.5	2.00	2.00	0.00
1,300.0	12.00	297.20	1,295.6	3,501.38	28.6	-55.7	-51.1	2.00	2.00	0.00
EOB TO 12.37° INC										
1,318.5	12.37	297.20	1,313.7	3,483.28	30.4	-59.2	-54.3	2.00	2.00	0.00
1,400.0	12.37	297.20	1,393.3	3,403.69	38.4	-74.7	-68.5	0.00	0.00	0.00
1,500.0	12.37	297.20	1,491.0	3,306.01	48.2	-93.7	-86.0	0.00	0.00	0.00
1,600.0	12.37	297.20	1,588.7	3,208.33	58.0	-112.8	-103.5	0.00	0.00	0.00
1,700.0	12.37	297.20	1,686.3	3,110.65	67.8	-131.8	-121.0	0.00	0.00	0.00
1,800.0	12.37	297.20	1,784.0	3,012.97	77.6	-150.9	-138.4	0.00	0.00	0.00
1,900.0	12.37	297.20	1,881.7	2,915.29	87.4	-169.9	-155.9	0.00	0.00	0.00
2,000.0	12.37	297.20	1,979.4	2,817.62	97.1	-189.0	-173.4	0.00	0.00	0.00
2,100.0	12.37	297.20	2,077.1	2,719.94	106.9	-208.1	-190.9	0.00	0.00	0.00
2,200.0	12.37	297.20	2,174.7	2,622.26	116.7	-227.1	-208.4	0.00	0.00	0.00
2,300.0	12.37	297.20	2,272.4	2,524.58	126.5	-246.2	-225.8	0.00	0.00	0.00
2,400.0	12.37	297.20	2,370.1	2,426.90	136.3	-265.2	-243.3	0.00	0.00	0.00
2,500.0	12.37	297.20	2,467.8	2,329.22	146.1	-284.3	-260.8	0.00	0.00	0.00
2,600.0	12.37	297.20	2,565.5	2,231.55	155.9	-303.3	-278.3	0.00	0.00	0.00
2,700.0	12.37	297.20	2,663.1	2,133.87	165.7	-322.4	-295.8	0.00	0.00	0.00
2,800.0	12.37	297.20	2,760.8	2,036.19	175.5	-341.4	-313.2	0.00	0.00	0.00
2,900.0	12.37	297.20	2,858.5	1,938.51	185.3	-360.5	-330.7	0.00	0.00	0.00
3,000.0	12.37	297.20	2,956.2	1,840.83	195.1	-379.5	-348.2	0.00	0.00	0.00
3,100.0	12.37	297.20	3,053.8	1,743.15	204.9	-398.6	-365.7	0.00	0.00	0.00
3,200.0	12.37	297.20	3,151.5	1,645.48	214.7	-417.6	-383.2	0.00	0.00	0.00
3,300.0	12.37	297.20	3,249.2	1,547.80	224.5	-436.7	-400.6	0.00	0.00	0.00
3,400.0	12.37	297.20	3,346.9	1,450.12	234.3	-455.7	-418.1	0.00	0.00	0.00
3,500.0	12.37	297.20	3,444.6	1,352.44	244.0	-474.8	-435.6	0.00	0.00	0.00
3,600.0	12.37	297.20	3,542.2	1,254.76	253.8	-493.9	-453.1	0.00	0.00	0.00
3,700.0	12.37	297.20	3,639.9	1,157.08	263.6	-512.9	-470.6	0.00	0.00	0.00
PARKMAN SANDSTONE										
3,765.6	12.37	297.20	3,704.0	1,093.00	270.1	-525.4	-482.0	0.00	0.00	0.00
3,800.0	12.37	297.20	3,737.6	1,059.41	273.4	-532.0	-488.1	0.00	0.00	0.00
3,900.0	12.37	297.20	3,835.3	961.73	283.2	-551.0	-505.5	0.00	0.00	0.00
4,000.0	12.37	297.20	3,933.0	864.05	293.0	-570.1	-523.0	0.00	0.00	0.00
4,100.0	12.37	297.20	4,030.6	766.37	302.8	-589.1	-540.5	0.00	0.00	0.00
4,200.0	12.37	297.20	4,128.3	668.69	312.6	-608.2	-558.0	0.00	0.00	0.00
SUSSEX SANDSTONE										
4,222.2	12.37	297.20	4,150.0	647.00	314.8	-612.4	-561.9	0.00	0.00	0.00
4,300.0	12.37	297.20	4,226.0	571.01	322.4	-627.2	-575.5	0.00	0.00	0.00
4,400.0	12.37	297.20	4,323.7	473.34	332.2	-646.3	-592.9	0.00	0.00	0.00
4,500.0	12.37	297.20	4,421.3	375.66	342.0	-665.3	-610.4	0.00	0.00	0.00

Planning Report



Database:	EDM 5000.1 Single User Db	Local Co-ordinate Reference:	Well BENNETT 6F-332
Company:	PDC ENERGY	TVD Reference:	KB-EST @ 4797.0usft (Original Well Elev)
Project:	WELD COUNTY, COLORADO	MD Reference:	KB-EST @ 4797.0usft (Original Well Elev)
Site:	SW NW SEC. 6 T6N R64W 6th P.M.	North Reference:	True
Well:	BENNETT 6F-332	Survey Calculation Method:	Minimum Curvature
Wellbore:	ORIGINAL WELLBORE		
Design:	PROPOSAL #1		

Planned Survey

MD (usft)	Inc (°)	Azi (°)	TVD (usft)	SS (usft)	+N/-S (usft)	+E/-W (usft)	Vertical Section (usft)	Dogleg Rate (°/100usft)	Build Rate (°/100usft)	Turn Rate (°/100usft)
4,600.0	12.37	297.20	4,519.0	277.98	351.8	-684.4	-627.9	0.00	0.00	0.00
4,700.0	12.37	297.20	4,616.7	180.30	361.6	-703.4	-645.4	0.00	0.00	0.00
4,800.0	12.37	297.20	4,714.4	82.62	371.4	-722.5	-662.9	0.00	0.00	0.00
4,900.0	12.37	297.20	4,812.1	-15.06	381.2	-741.5	-680.3	0.00	0.00	0.00
5,000.0	12.37	297.20	4,909.7	-112.73	390.9	-760.6	-697.8	0.00	0.00	0.00
5,100.0	12.37	297.20	5,007.4	-210.41	400.7	-779.7	-715.3	0.00	0.00	0.00
5,200.0	12.37	297.20	5,105.1	-308.09	410.5	-798.7	-732.8	0.00	0.00	0.00
5,300.0	12.37	297.20	5,202.8	-405.77	420.3	-817.8	-750.3	0.00	0.00	0.00
5,400.0	12.37	297.20	5,300.4	-503.45	430.1	-836.8	-767.7	0.00	0.00	0.00
5,500.0	12.37	297.20	5,398.1	-601.13	439.9	-855.9	-785.2	0.00	0.00	0.00
5,600.0	12.37	297.20	5,495.8	-698.80	449.7	-874.9	-802.7	0.00	0.00	0.00
5,700.0	12.37	297.20	5,593.5	-796.48	459.5	-894.0	-820.2	0.00	0.00	0.00
END OF TANGENT										
5,796.9	12.37	297.20	5,688.2	-891.18	469.0	-912.4	-837.1	0.00	0.00	0.00
5,800.0	12.31	297.20	5,691.2	-894.16	469.3	-913.0	-837.7	2.00	-2.00	0.00
5,900.0	10.31	297.20	5,789.2	-992.21	478.3	-930.5	-853.7	2.00	-2.00	0.00
6,000.0	8.31	297.20	5,887.9	-1,090.89	485.7	-944.9	-866.9	2.00	-2.00	0.00
6,100.0	6.31	297.20	5,987.1	-1,190.08	491.5	-956.2	-877.2	2.00	-2.00	0.00
6,200.0	4.31	297.20	6,086.6	-1,289.64	495.7	-964.4	-884.8	2.00	-2.00	0.00
6,300.0	2.31	297.20	6,186.5	-1,389.47	498.3	-969.5	-889.5	2.00	-2.00	0.00
6,400.0	0.31	297.20	6,286.4	-1,489.44	499.4	-971.6	-891.4	2.00	-2.00	0.00
EOD TO VERTICAL										
6,415.5	0.00	0.00	6,301.9	-1,504.90	499.4	-971.6	-891.4	2.00	-2.00	0.00
KOP (8°/100ft BUR)										
6,445.5	0.00	0.00	6,331.9	-1,534.90	499.4	-971.6	-891.4	0.00	0.00	0.00
6,500.0	4.36	90.00	6,386.4	-1,589.39	499.4	-969.5	-889.3	8.00	8.00	0.00
6,600.0	12.36	90.00	6,485.2	-1,688.24	499.4	-955.0	-875.0	8.00	8.00	0.00
6,700.0	20.36	90.00	6,581.1	-1,784.11	499.4	-926.8	-847.1	8.00	8.00	0.00
SHARON SPRINGS										
6,795.3	27.99	90.00	6,668.0	-1,871.00	499.4	-887.8	-808.5	8.00	8.00	0.00
6,800.0	28.36	90.00	6,672.1	-1,875.13	499.4	-885.6	-806.3	8.00	8.00	0.00
6,900.0	36.36	90.00	6,756.5	-1,959.53	499.4	-832.1	-753.3	8.00	8.00	0.00
NIOBRARA A										
6,924.5	38.32	90.00	6,776.0	-1,979.00	499.4	-817.3	-738.6	8.00	8.00	0.00
7,000.0	44.36	90.00	6,832.7	-2,035.67	499.4	-767.4	-689.3	8.00	8.00	0.00
NIOBRARA B										
7,057.3	48.95	90.00	6,872.0	-2,075.00	499.4	-725.8	-648.0	8.00	8.00	0.00
7,100.0	52.36	90.00	6,899.1	-2,102.05	499.4	-692.8	-615.3	8.00	8.00	0.00
7,200.0	60.36	90.00	6,954.4	-2,157.40	499.4	-609.6	-533.0	8.00	8.00	0.00
NIOBRARA C										
7,211.5	61.28	90.00	6,960.0	-2,163.00	499.4	-599.5	-523.1	8.00	8.00	0.00
7,300.0	68.36	90.00	6,997.6	-2,200.63	499.4	-519.5	-443.8	8.00	8.00	0.00
7,400.0	76.36	90.00	7,027.9	-2,230.91	499.4	-424.3	-349.5	8.00	8.00	0.00
7,500.0	84.36	90.00	7,044.6	-2,247.63	499.4	-325.8	-252.0	8.00	8.00	0.00
HZ LANDING PNT *NEW*: 1618.1ft FNL & 740.7ft FWL of Sec 6										
7,580.0	90.76	90.00	7,048.0	-2,251.03	499.4	-245.9	-173.0	8.00	8.00	0.00
7,600.0	90.76	90.00	7,047.8	-2,250.77	499.4	-225.9	-153.1	0.00	0.00	0.00
7,700.0	90.76	90.00	7,046.4	-2,249.44	499.4	-125.9	-54.1	0.00	0.00	0.00
7,800.0	90.76	90.00	7,045.1	-2,248.11	499.4	-25.9	44.8	0.00	0.00	0.00
7,900.0	90.76	90.00	7,043.8	-2,246.79	499.4	74.1	143.8	0.00	0.00	0.00
8,000.0	90.76	90.00	7,042.5	-2,245.46	499.4	174.1	242.8	0.00	0.00	0.00
8,100.0	90.76	90.00	7,041.1	-2,244.13	499.4	274.1	341.8	0.00	0.00	0.00
8,200.0	90.76	90.00	7,039.8	-2,242.80	499.4	374.1	440.8	0.00	0.00	0.00

Planning Report



Database:	EDM 5000.1 Single User Db	Local Co-ordinate Reference:	Well BENNETT 6F-332
Company:	PDC ENERGY	TVD Reference:	KB-EST @ 4797.0usft (Original Well Elev)
Project:	WELD COUNTY, COLORADO	MD Reference:	KB-EST @ 4797.0usft (Original Well Elev)
Site:	SW NW SEC. 6 T6N R64W 6th P.M.	North Reference:	True
Well:	BENNETT 6F-332	Survey Calculation Method:	Minimum Curvature
Wellbore:	ORIGINAL WELLBORE		
Design:	PROPOSAL #1		

Planned Survey

MD (usft)	Inc (°)	Azi (°)	TVD (usft)	SS (usft)	+N/-S (usft)	+E/-W (usft)	Vertical Section (usft)	Dogleg Rate (°/100usft)	Build Rate (°/100usft)	Turn Rate (°/100usft)
8,300.0	90.76	90.00	7,038.5	-2,241.47	499.4	474.1	539.8	0.00	0.00	0.00
8,400.0	90.76	90.00	7,037.1	-2,240.14	499.4	574.1	638.8	0.00	0.00	0.00
8,500.0	90.76	90.00	7,035.8	-2,238.81	499.4	674.1	737.8	0.00	0.00	0.00
8,600.0	90.76	90.00	7,034.5	-2,237.48	499.4	774.0	836.8	0.00	0.00	0.00
8,700.0	90.76	90.00	7,033.2	-2,236.15	499.4	874.0	935.8	0.00	0.00	0.00
8,800.0	90.76	90.00	7,031.8	-2,234.82	499.4	974.0	1,034.8	0.00	0.00	0.00
8,900.0	90.76	90.00	7,030.5	-2,233.49	499.4	1,074.0	1,133.7	0.00	0.00	0.00
9,000.0	90.76	90.00	7,029.2	-2,232.16	499.4	1,174.0	1,232.7	0.00	0.00	0.00
9,100.0	90.76	90.00	7,027.8	-2,230.82	499.4	1,274.0	1,331.7	0.00	0.00	0.00
9,200.0	90.76	90.00	7,026.5	-2,229.49	499.4	1,374.0	1,430.7	0.00	0.00	0.00
9,300.0	90.76	90.00	7,025.2	-2,228.16	499.4	1,474.0	1,529.7	0.00	0.00	0.00
9,400.0	90.76	90.00	7,023.8	-2,226.82	499.4	1,574.0	1,628.7	0.00	0.00	0.00
9,500.0	90.76	90.00	7,022.5	-2,225.49	499.4	1,674.0	1,727.7	0.00	0.00	0.00
9,600.0	90.76	90.00	7,021.2	-2,224.15	499.4	1,774.0	1,826.7	0.00	0.00	0.00
9,700.0	90.77	90.00	7,019.8	-2,222.82	499.4	1,873.9	1,925.7	0.00	0.00	0.00
9,800.0	90.77	90.00	7,018.5	-2,221.48	499.4	1,973.9	2,024.7	0.00	0.00	0.00
9,900.0	90.77	90.00	7,017.1	-2,220.15	499.4	2,073.9	2,123.6	0.00	0.00	0.00
10,000.0	90.77	90.00	7,015.8	-2,218.81	499.4	2,173.9	2,222.6	0.00	0.00	0.00
10,100.0	90.77	90.00	7,014.5	-2,217.47	499.4	2,273.9	2,321.6	0.00	0.00	0.00
10,200.0	90.77	90.00	7,013.1	-2,216.13	499.4	2,373.9	2,420.6	0.00	0.00	0.00
10,300.0	90.77	90.00	7,011.8	-2,214.80	499.4	2,473.9	2,519.6	0.00	0.00	0.00
10,400.0	90.77	90.00	7,010.5	-2,213.46	499.4	2,573.9	2,618.6	0.00	0.00	0.00
10,500.0	90.77	90.00	7,009.1	-2,212.12	499.4	2,673.9	2,717.6	0.00	0.00	0.00
10,600.0	90.77	90.00	7,007.8	-2,210.78	499.4	2,773.9	2,816.6	0.00	0.00	0.00
10,700.0	90.77	90.00	7,006.4	-2,209.44	499.4	2,873.9	2,915.6	0.00	0.00	0.00
10,800.0	90.77	90.00	7,005.1	-2,208.10	499.4	2,973.8	3,014.6	0.00	0.00	0.00
10,900.0	90.77	90.00	7,003.8	-2,206.76	499.4	3,073.8	3,113.6	0.00	0.00	0.00
11,000.0	90.77	90.00	7,002.4	-2,205.42	499.4	3,173.8	3,212.5	0.00	0.00	0.00
11,100.0	90.77	90.00	7,001.1	-2,204.08	499.4	3,273.8	3,311.5	0.00	0.00	0.00
11,200.0	90.77	90.00	6,999.7	-2,202.74	499.4	3,373.8	3,410.5	0.00	0.00	0.00
11,300.0	90.77	90.00	6,998.4	-2,201.40	499.4	3,473.8	3,509.5	0.00	0.00	0.00
BHL: 1673ft FNL & 500ft FEL of Sec 6										
11,329.5	90.77	90.00	6,998.0	-2,201.00	499.4	3,503.3	3,538.7	0.00	0.00	0.00

Formations

MD (usft)	TVD (usft)	Name	Lithology	Dip (°)	Dip Direction (°)
3,765.6	3,704.0	PARKMAN SANDSTONE			
4,222.2	4,150.0	SUSSEX SANDSTONE			
6,795.3	6,668.0	SHARON SPRINGS			
6,924.5	6,776.0	NIOBRARA A			
7,057.3	6,872.0	NIOBRARA B			
7,211.5	6,960.0	NIOBRARA C			

Planning Report



Database:	EDM 5000.1 Single User Db	Local Co-ordinate Reference:	Well BENNETT 6F-332
Company:	PDC ENERGY	TVD Reference:	KB-EST @ 4797.0usft (Original Well Elev)
Project:	WELD COUNTY, COLORADO	MD Reference:	KB-EST @ 4797.0usft (Original Well Elev)
Site:	SW NW SEC. 6 T6N R64W 6th P.M.	North Reference:	True
Well:	BENNETT 6F-332	Survey Calculation Method:	Minimum Curvature
Wellbore:	ORIGINAL WELLBORE		
Design:	PROPOSAL #1		

Plan Annotations

MD (usft)	TVD (usft)	Local Coordinates		Comment
		+N/-S (usft)	+E/-W (usft)	
0.0	0.0	0.0	0.0	SHL: 2125ft FNL & 98ft FWL of Sec 6
700.0	700.0	0.0	0.0	START NUDGE (2°/100ft BUR)
1,318.5	1,313.7	30.4	-59.2	EOB TO 12.37° INC
5,796.9	5,688.2	469.0	-912.4	END OF TANGENT
6,415.5	6,301.9	499.4	-971.6	EOD TO VERTICAL
6,445.5	6,331.9	499.4	-971.6	KOP (8°/100ft BUR)
7,580.0	7,048.0	499.4	-245.9	HZ LANDING PNT *NEW*: 1618.1ft FNL & 740.7ft FWL of Sec 6
11,329.5	6,998.0	499.4	3,503.3	BHL: 1673ft FNL & 500ft FEL of Sec 6