

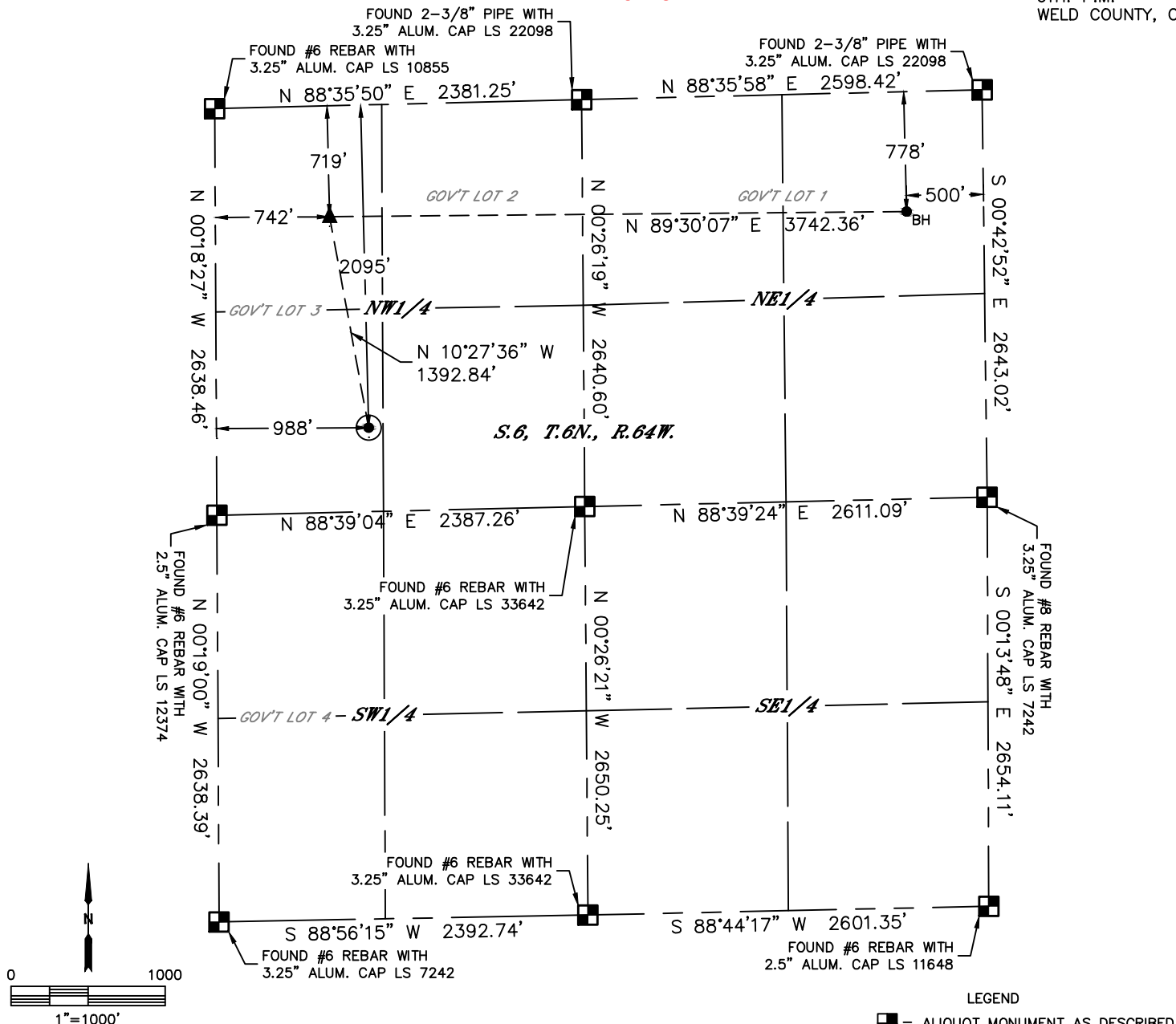


Lat40°, Inc. 6250 W. 10th Street, Unit 2, Greeley, CO 970-515-5294

# WELL LOCATION CERTIFICATE

**BENNETT 6F-312**

SECTION: 6  
TOWNSHIP: 6N  
RANGE: 64W  
6TH. P.M.  
WELD COUNTY, CO



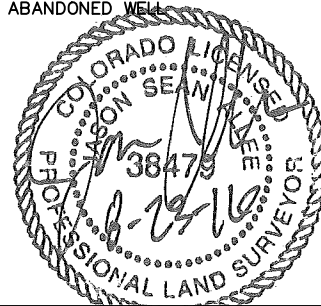
CLIENT: PDC ENERGY				LANDMAN: MARK ALESSI			
INSTRUMENT OPERATOR: CASEY KOHOUT				SURVEY DATE: 2/3/2016		SURFACE USE: CROP LAND	
SHL FOOTAGE	SHL LAT°	SHL LONG°	SHL PDOP	SHL ELEV	SHL 1/4/1/4	SHL S-T-R	
2095 FNL 988 FWL	40.51639	-104.59802	1.7	4775	SWNW	6-6-64	

BHL FOOTAGE	BHL LAT°	BHL LONG°	BHL S-T-R	EP LAT°	EP LONG°	EP S-T-R
778 FNL 500 FEL	40.52014	-104.58542	6-6-64	40.52016	-104.59888	6-6-64

NOTE:  
1) Bearings shown are Grid Bearings of the Colorado State Plane Coordinate System, North Zone, North American Datum 1983. The lineal dimensions as contained herein are based upon the "U.S. Survey Foot."  
2) Distances to section lines measured at 90 degrees from said section lines.  
3) Ground elevations are based on an observed GPS elevation (NAVD 1988 DATUM).  
4) Latitude and Longitude shown are (NAD 83 DATUM).  
5) IMPROVEMENTS: See LOCATION DRAWING for all visible improvements within 500' of oil and gas location.  
6) This map does not represent a boundary survey.

NEAREST CULTURAL ITEMS	
BUILDING	±663' SW
BUILDING UNIT	±689' NW
HIGH OCCUPANCY BUILDING UNIT	±2910' NE
DESIGNATED OUTSIDE ACTIVITY AREA	5280'+
PUBLIC ROAD (COUNTY ROAD 49)	±977' W
ABOVE GROUND UTILITY	±968' NW
RAILROAD	5280'+
PROPERTY LINE	±231' W

- LEGEND
- = ALIQUOT MONUMENT AS DESCRIBED
  - = CALCULATED POSITION
  - = SURFACE HOLE LOCATION (SHL)
  - ▲ = ENTRY POINT LOCATION (EP)
  - BH = BOTTOM HOLE LOCATION (BHL)
  - ⊕ = EXISTING WELL
  - ⊗ = ABANDONED WELL



Jason S. Allee—On behalf of Lat40°, Inc.  
Colorado Licensed Professional Land Surveyor No. 38479  
DATE: 8/23/2016  
PROJECT#: 2015157