

T7N, R80W, 6th P.M.

SandRidge Exploration & Production, LLC

Well location, Castle 0780 8-17H20 located as shown in the SW1/4SW1/4 of Section 9, T7N, R80W, 6th P.M., Jackson County, Colorado.

BASIS OF BEARINGS:

US STATE PLANE 1983
CO NORTH 0501 GRID

BASIS OF ELEVATION

SPOT ELEVATION AT THE NW CORNER OF SECTION 9, T7N, R80W, 6TH PM, TAKEN FROM THE COALMONT QUADRANGLE, USGS 7.5 MIN QUAD (TOPOGRAPHIC MAP) WITH SAID ELEVATION MARKED AS BEING 8091 FEET.

GRAPHIC SCALE 1"=1000'

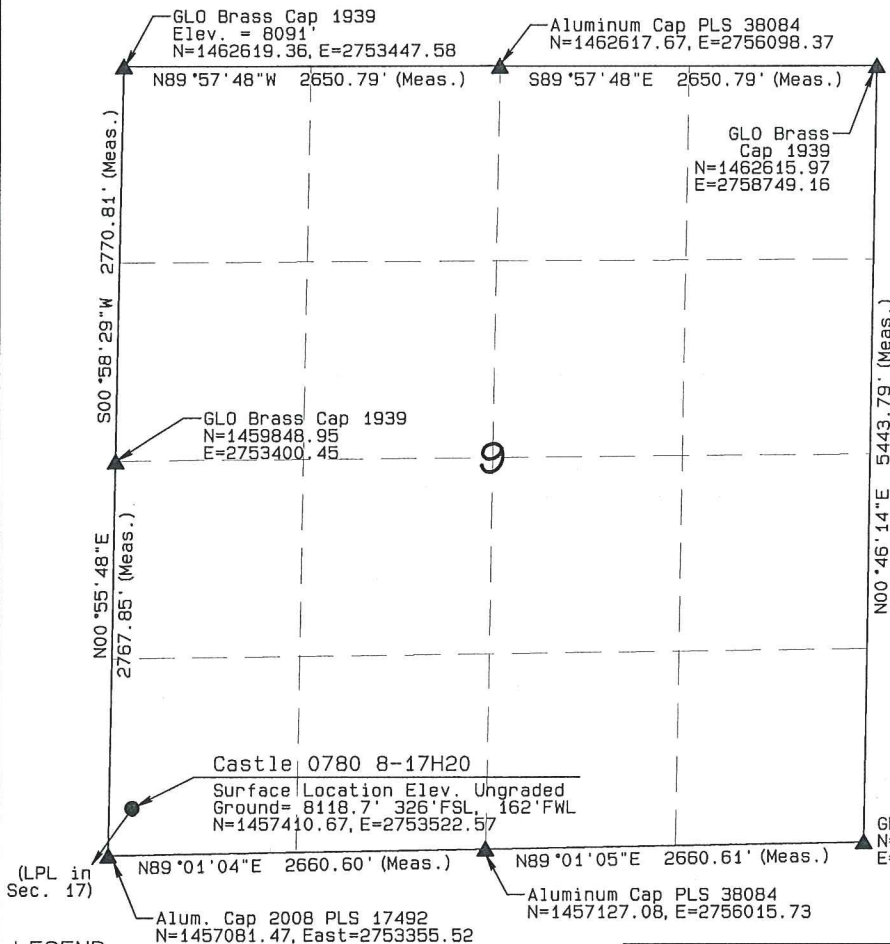
1000 0 1000

I RANDALL R. MILLER, BEING A REGISTERED LAND SURVEYOR IN THE STATE OF COLORADO, DO HEREBY CERTIFY THAT THIS PLAT WAS MADE BY ME AND/OR UNDER MY DIRECT SUPERVISION AND THAT IT IS ACCURATE TO THE BEST OF MY KNOWLEDGE.

DATED THIS _____ DAY OF _____

RANDALL R. MILLER, COLORADO PLS NO. 38084

8/30/2016



LEGEND

90° SYMBOL
FOUND CORNER
PROPOSED WELL
PROPOSED BHL/LPL



NAD 83 (SURFACE LOCATION)

LATITUDE=40.585605°N
LONGITUDE=106.387429°W PDOP = 1.341

NAD 83 (TARGET BOTTOM HOLE)

LATITUDE=40.556633°N
LONGITUDE=106.389450°W

NAD 83 (LANDING POINT LOCATION)

LATITUDE=40.583675°N
LONGITUDE=106.389217°W

NORTH PARK ENGINEERING & CONSULTING, INC.

P.O. BOX 395
WALDEN, CO 80480
(970) 723-3725

DATE OF FIELD WORK: FEB 19, 2016 DRAWING COMPLETION: MAR 16, 2016
SURVEYED BY: RFM DRAWN BY: TKH CHECKED BY: RFM
REVISED: 8/22/16

T7N, R80W, 6th P.M.

SandRidge Exploration & Production, LLC

Well location, Castle 0780 8-17H20 located as shown in the SE1/4SE1/4 of Section 8, T7N, R80W, 6th P.M., Jackson County, Colorado.

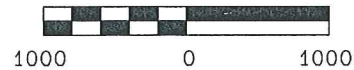
BASIS OF BEARINGS:

US STATE PLANE 1983
CO NORTH 0501 GRID

BASIS OF ELEVATION

SPOT ELEVATION AT THE NW CORNER OF SECTION 9, T7N, R80W, 6TH PM, TAKEN FROM THE COALMONT QUADRANGLE, USGS 7.5 MIN QUAD (TOPOGRAPHIC MAP) WITH SAID ELEVATION MARKED AS BEING 8091 FEET.

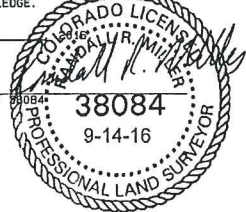
GRAPHIC SCALE 1"=1000'



I RANDALL R. MILLER, BEING A REGISTERED LAND SURVEYOR IN THE STATE OF COLORADO, DO HEREBY CERTIFY THAT THIS PLAN WAS MADE BY ME AND/OR UNDER MY DIRECT SUPERVISION AND IS ACCURATE TO THE BEST OF MY KNOWLEDGE.

DATED THIS _____ DAY OF _____

RANDALL R. MILLER, COLORADO PLS NO. 38084



NORTH PARK ENGINEERING & CONSULTING, INC.

P.O. BOX 395
WALDEN, CO 80480
(970) 723-3725

LEGEND

90° SYMBOL
FOUND CORNER
PROPOSED WELL
PROPOSED BHL/LPL



NAD 83 (SURFACE LOCATION)

LATITUDE=40.585605°N
LONGITUDE=106.387429°W PDOP = 1.341

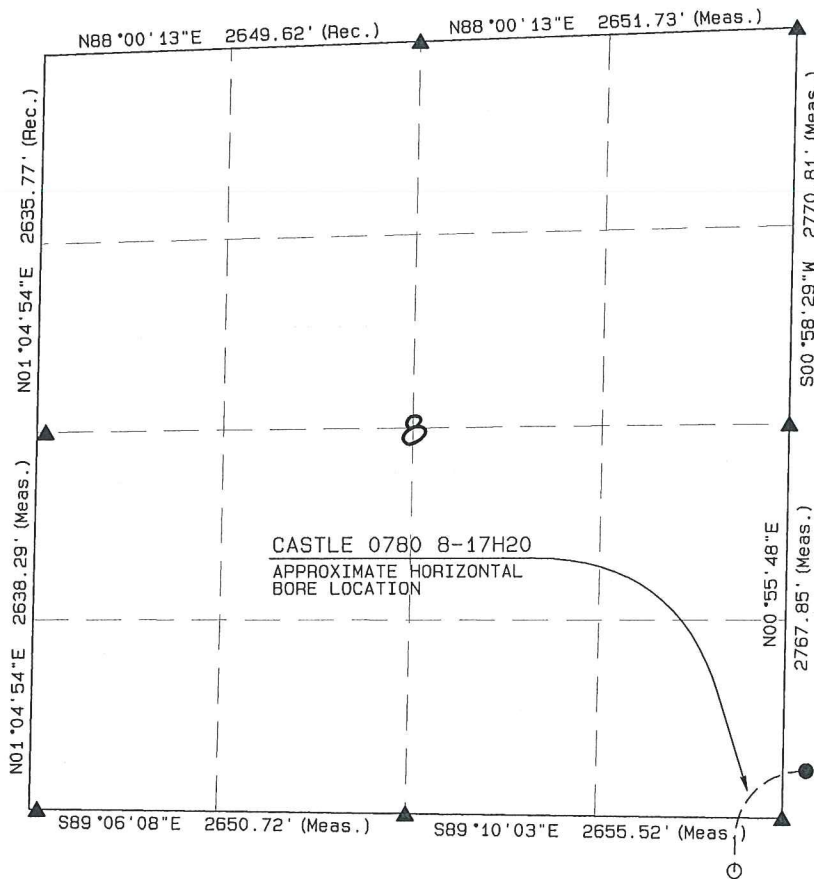
NAD 83 (TARGET BOTTOM HOLE)

LATITUDE=40.556633°N
LONGITUDE=106.389450°W

NAD 83 (LANDING POINT LOCATION)

LATITUDE=40.583675°N
LONGITUDE=106.389217°W

DATE OF FIELD WORK: FEB 19, 2016 DRAWING COMPLETION: MAR 16, 2016
SURVEYED BY: RFM DRAWN BY: TKH CHECKED BY: RFM
REVISED: 9/14/16



CASTLE 0780 8-17H20
APPROXIMATE HORIZONTAL
BORE LOCATION

T7N, R80W, 6th P.M.

SandRidge Exploration & Production, LLC

Landing Point Location, Castle 0780 8-17H20
as shown in the NE1/4NE1/4 of Section 17, T7N,
R80W, 6th P.M., Jackson County, Colorado.

BASIS OF BEARINGS:

US STATE PLANE 1983
CO NORTH 0501 GRID

BASIS OF ELEVATION

SPOT ELEVATION AT THE NW CORNER OF SECTION 9,
T7N, R80W, 6TH PM, TAKEN FROM THE COALMONT
QUADRANGLE, USGS 7.5 MIN QUAD (TOPOGRAPHIC MAP)
WITH SAID ELEVATION MARKED AS BEING 8091 FEET.

Alum. Cap 2008
PLS 17492
N=1454453.54,
E=2753310.02

GRAPHIC SCALE 1"=1000'



I RANDALL R. MILLER, BEING A REGISTERED LAND SURVEYOR IN THE
STATE OF COLORADO, DO HEREBY CERTIFY THAT THE
MADE BY ME AND/OR UNDER MY DIRECT SUPERVISION
IS ACCURATE TO THE BEST OF MY KNOWLEDGE.

DATED THIS _____ DAY OF _____

RANDALL R. MILLER, COLORADO PLS NO. 38084

8/30/2016



GLO Brass Cap 1939
N=1451814.71, E=2753283.04

NORTH PARK ENGINEERING & CONSULTING, INC.

P.O. BOX 395
WALDEN, CO 80480
(970) 723-3725

DATE OF FIELD WORK: FEB 19, 2016 DRAWING COMPLETION: MAR 16, 2016
SURVEYED BY: RFM DRAWN BY: TKH CHECKED BY: RFM
REVISED: 8/22/16

GLO Brass Cap 1939
N=1457120.05, E=2750700.28

Alum. Cap 2008 PLS 17492
N=1457081.47, E=2753355.52

S89°06'08"E 2650.72' (Meas.)

S89°10'03"E 2655.52' (Meas.)

GLO Brass Cap 1939
Witness Corner
N=1459799.39, E=2748161.07

(SHL in
Sec. 9)

Castle 0780 7-17H20

Landing Point Location
374' FNL, 330' FEL
N=1456712.32, E=2753019.08

GLO Brass Cap 1939
Witness Corner
N=1454498.55,
E=2747969.21

17

N00°57'07"E 9851.96'

(BHL in
Sec. 20)

N89°47'47"W 2635.59' (Meas.)

S89°47'35"E 2636.09' (Meas.)

GLO Brass Cap 1939
Witness Corner
N=1451833.71, E=2747978.40

BLM Aluminum Cap 1981
N=1451824.22, E=2750646.97

LEGEND

90° SYMBOL
FOUND CORNER
PROPOSED WELL
PROPOSED BHL/LPL



NAD 83 (SURFACE LOCATION)

LATITUDE=40.585605°N
LONGITUDE=106.387429°W PDOP = 1.341

NAD 83 (TARGET BOTTOM HOLE)

LATITUDE=40.556633°N
LONGITUDE=106.389450°W

NAD 83 (LANDING POINT LOCATION)

LATITUDE=40.583675°N
LONGITUDE=106.389217°W

T7N, R80W, 6th P.M.

SandRidge Exploration & Production, LLC

Bottom Hole Location, Castle 0780 8-17H20
as shown in the SE1/4SE1/4 of Section 20, T7N,
R80W, 6th P.M., Jackson County, Colorado.

BASIS OF BEARINGS:

US STATE PLANE 1983
CO NORTH 0501 GRID

BASIS OF ELEVATION

SPOT ELEVATION AT THE NW CORNER OF SECTION 9,
T7N, R80W, 6TH PM, TAKEN FROM THE COALMONT
QUADRANGLE, USGS 7.5 MIN QUAD (TOPOGRAPHIC MAP)
WITH SAID ELEVATION MARKED AS BEING 8091 FEET.

GRAPHIC SCALE 1"=1000'



I RANDALL R. MILLER, BEING A REGISTERED LAND SURVEYOR
STATE OF COLORADO, DO HEREBY CERTIFY THAT THIS MAP WAS
MADE BY ME AND/OR UNDER MY DIRECT SUPERVISION AND THAT
IT IS ACCURATE TO THE BEST OF MY KNOWLEDGE.

DATED THIS _____ DAY OF _____

RANDALL R. MILLER, COLORADO PLS NO. 38084

8/30/2016



GLO Brass Cap 1939
N=1446537.26, E=2753178.10

Castle 0780 8-17H20
Bottom Hole Location
300' FSL, 330' FEL
N=1446861.72, E=2752855.40

Aluminum Cap 2007
N=1446490.99, E=2750507.79

Aluminum Cap 2007
(monument below road surface)
N=1446519.97, E=2747840.26

LEGEND

90° SYMBOL
FOUND CORNER
PROPOSED WELL
PROPOSED BHL/LPL



NAD 83 (SURFACE LOCATION)

LATITUDE=40.585605°N
LONGITUDE=106.387429°W PDOP = 1.341

NAD 83 (TARGET BOTTOM HOLE)

LATITUDE=40.556633°N
LONGITUDE=106.389450°W

NAD 83 (LANDING POINT LOCATION)

LATITUDE=40.583675°N
LONGITUDE=106.389217°W

NORTH PARK ENGINEERING & CONSULTING, INC.

P.O. BOX 395
WALDEN, CO 80480
(970) 723-3725

DATE OF FIELD WORK: FEB 19, 2016 DRAWING COMPLETION: MAR 16, 2016
SURVEYED BY: FRM DRAWN BY: TKH CHECKED BY: FRM
REVISED: 8/22/16