

T7N, R80W, 6th P.M.

## SandRidge Exploration & Production, LLC

Well location, Castle 0780 7-17H20 located as shown in the SW1/4SW1/4 of Section 9, T7N, R80W, 6th P.M., Jackson County, Colorado.

### BASIS OF BEARINGS:

US STATE PLANE 1983  
CO NORTH 0501 GRID

### BASIS OF ELEVATION

SPOT ELEVATION AT THE NW CORNER OF SECTION 9, T7N, R80W, 6TH PM, TAKEN FROM THE COALMONT QUADRANGLE, USGS 7.5 MIN QUAD (TOPOGRAPHIC MAP) WITH SAID ELEVATION MARKED AS BEING 8091 FEET.

GRAPHIC SCALE 1"=1000'



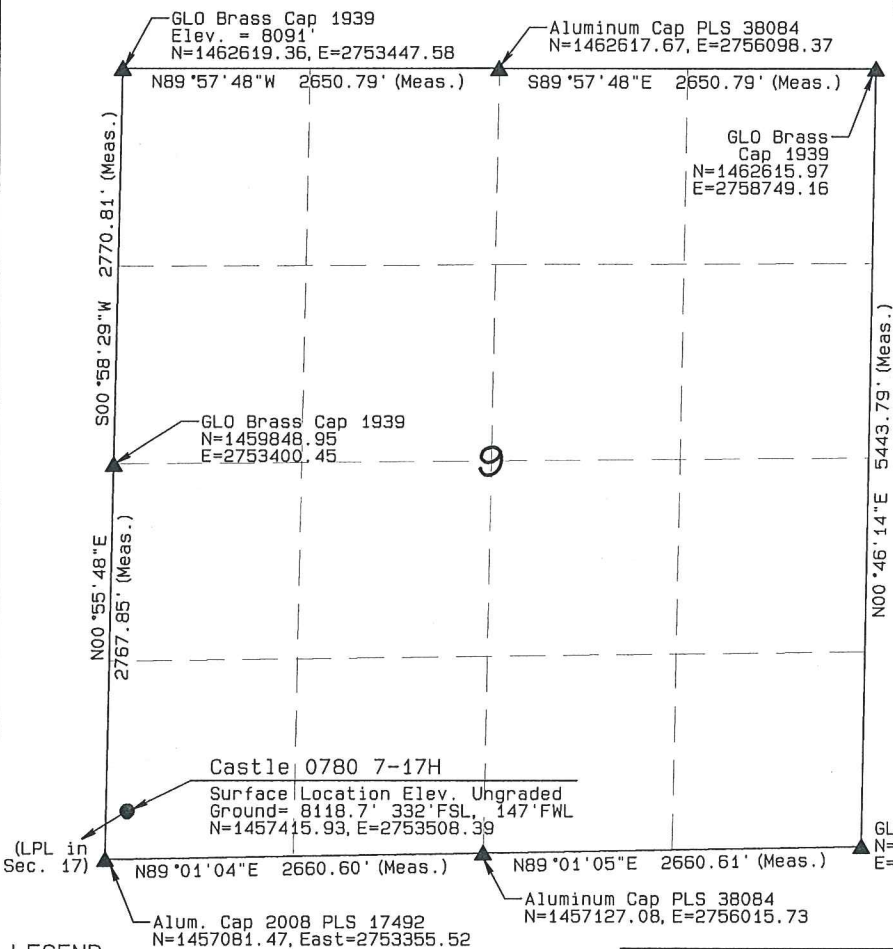
I RANDALL R. MILLER, BEING A REGISTERED LAND SURVEYOR IN THE STATE OF COLORADO, DO HEREBY CERTIFY THAT THE SURVEY MADE BY ME AND/OR UNDER MY DIRECT SUPERVISION AND CONTROL IS ACCURATE TO THE BEST OF MY KNOWLEDGE.

DATED THIS \_\_\_\_\_ DAY OF \_\_\_\_\_

RANDALL R. MILLER, COLORADO PLS NO. 38084

8/30/2016

PROFESSIONAL LAND SURVEYOR



### LEGEND

90° SYMBOL  
FOUND CORNER  
PROPOSED WELL  
PROPOSED BHL/LPL



### NAD 83 (SURFACE LOCATION)

LATITUDE=40.585619°N  
LONGITUDE=106.387480°W PDOP = 1.411

### NAD 83 (TARGET BOTTOM HOLE)

LATITUDE=40.556583°N  
LONGITUDE=106.391826°W

### NAD 83 (LANDING POINT LOCATION)

LATITUDE=40.583699°N  
LONGITUDE=106.391593°W

## NORTH PARK ENGINEERING & CONSULTING, INC.

P.O. BOX 395  
WALDEN, CO 80480  
(970) 723-3725

DATE OF FIELD WORK: FEB 19, 2016 DRAWING COMPLETION: MAR 16, 2016  
SURVEYED BY: RFM DRAINED BY: TKH CHECKED BY: RFM  
REVISED: 8/22/16

T7N, R80W, 6th P.M.

## SandRidge Exploration & Production, LLC

Well location, Castle 0780 7-17H20 located as shown in the SE1/4SE1/4 of Section 8, T7N, R80W, 6th P.M., Jackson County, Colorado.

### BASIS OF BEARINGS:

US STATE PLANE 1983  
CO NORTH 0501 GRID

### BASIS OF ELEVATION

SPOT ELEVATION AT THE NW CORNER OF SECTION 9, T7N, R80W, 6TH PM, TAKEN FROM THE COALMONT QUADRANGLE, USGS 7.5 MIN QUAD (TOPOGRAPHIC MAP) WITH SAID ELEVATION MARKED AS BEING 8091 FEET.

GRAPHIC SCALE 1"=1000'



I RANDALL R. MILLER, BEING A REGISTERED LAND SURVEYOR IN THE STATE OF COLORADO, DO HEREBY CERTIFY THAT THIS PLAN WAS MADE BY ME AND/OR UNDER MY DIRECT SUPERVISION AND IS ACCURATE TO THE BEST OF MY KNOWLEDGE.

DATED THIS \_\_\_\_\_ DAY OF \_\_\_\_\_

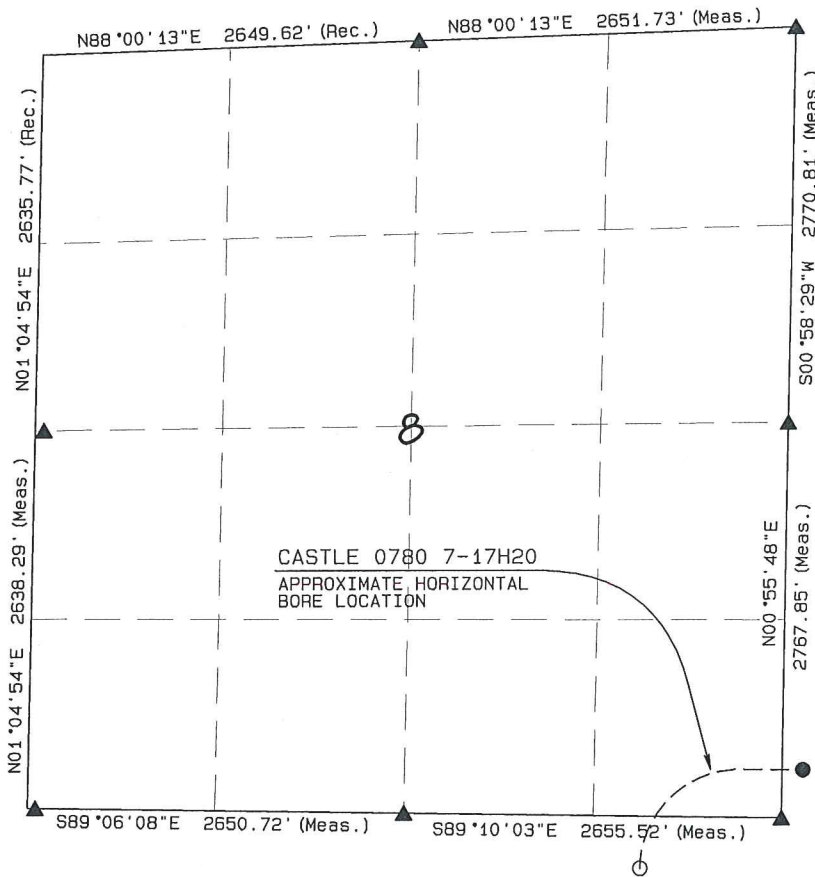
RANDALL R. MILLER, COLORADO PLS NO. 38084



NORTH PARK ENGINEERING & CONSULTING, INC.

P.O. BOX 395  
WALDEN, CO 80480  
(970) 723-3725

DATE OF FIELD WORK: FEB 19, 2016 DRAWING COMPLETION: MAR 16, 2016  
SURVEYED BY: RFM DRAWN BY: TKH CHECKED BY: RFM  
REVISED: 9/14/16



### LEGEND

90° SYMBOL  
FOUND CORNER  
PROPOSED WELL  
PROPOSED BHL/LPL



### NAD 83 (SURFACE LOCATION)

LATITUDE=40.585619°N  
LONGITUDE=106.387480°W PDOP = 1.411

### NAD 83 (TARGET BOTTOM HOLE)

LATITUDE=40.556583°N  
LONGITUDE=106.391826°W

### NAD 83 (LANDING POINT LOCATION)

LATITUDE=40.583699°N  
LONGITUDE=106.391593°W

T7N, R80W, 6th P.M.

## SandRidge Exploration & Production, LLC

Landing Point Location, Castle 0780 7-17H20  
as shown in the NE1/4NE1/4 of Section 17, T7N,  
R80W, 6th P.M., Jackson County, Colorado.

### BASIS OF BEARINGS:

US STATE PLANE 1983  
CO NORTH 0501 GRID

### BASIS OF ELEVATION

SPOT ELEVATION AT THE NW CORNER OF SECTION 9,  
T7N, R80W, 6TH PM, TAKEN FROM THE COALMONT  
QUADRANGLE, USGS 7.5 MIN QUAD (TOPOGRAPHIC MAP)  
WITH SAID ELEVATION MARKED AS BEING 8091 FEET.

Alum. Cap 2008  
PLS 17492  
N=1454453.54,  
E=2753310.02

GRAPHIC SCALE 1"=1000'



I RANDALL R. MILLER, BEING A REGISTERED LAND SURVEYOR IN THE  
STATE OF COLORADO, DO HEREBY CERTIFY THAT THIS SURVEY WAS  
MADE BY ME AND/OR UNDER MY DIRECT SUPERVISION, AND THAT THE  
IS ACCURATE TO THE BEST OF MY KNOWLEDGE.

DATED THIS \_\_\_\_\_ DAY OF \_\_\_\_\_

RANDALL R. MILLER, COLORADO PLS NO. 38084



GLO Brass Cap 1939  
N=1451814.71, E=2753283.04

NORTH PARK ENGINEERING &  
CONSULTING, INC.

P.O. BOX 395  
WALDEN, CO 80480  
(970) 723-3725

DATE OF FIELD WORK: FEB 19, 2016 DRAWING COMPLETION: MAR 16, 2016  
SURVEYED BY: RFM DRAWN BY: TKH CHECKED BY: RFM  
REVISED: 8/22/16

GLO Brass Cap 1939  
N=1457120.05, E=2750700.28

Alum. Cap 2008 PLS 17492  
N=1457081.47, E=2753355.52

S89°06'08"E 2650.72' (Meas.)

S89°10'03"E 2655.52' (Meas.)

GLO Brass Cap 1939  
Witness Corner  
N=1459799.39, E=2748161.07

Castle 0780 7-17H20

Landing Point Location  
368' FNL, 990' FEL  
N=1456727.90, E=2752359.25

GLO Brass Cap 1939  
Witness Corner  
N=1454498.55,  
E=2747969.21

17

S00°57'10"W 9879.00'

S00°59'31"W 2628.32' (Meas.)

S00°35'09"W 2638.97' (Meas.)

(BHL in  
Sec. 20)

N89°47'47"W 2635.59' (Meas.)

S89°47'35"E 2636.09' (Meas.)

GLO Brass Cap 1939  
Witness Corner  
N=1451833.71, E=2747978.40

BLM Aluminum Cap 1981  
N=1451824.22, E=2750646.97

### LEGEND

90° SYMBOL  
FOUND CORNER  
PROPOSED WELL  
PROPOSED BHL/LPL



### NAD 83 (SURFACE LOCATION)

LATITUDE=40.585619°N  
LONGITUDE=106.387480°W PDOP = 1.411

### NAD 83 (TARGET BOTTOM HOLE)

LATITUDE=40.556583°N  
LONGITUDE=106.391826°W

### NAD 83 (LANDING POINT LOCATION)

LATITUDE=40.583699°N  
LONGITUDE=106.391593°W

T7N, R80W, 6th P.M.

## SandRidge Exploration & Production, LLC

Bottom Hole Location, Castle 0780 7-17H20  
as shown in the SE1/4SE1/4 of Section 20, T7N,  
R80W, 6th P.M., Jackson County, Colorado.

### BASIS OF BEARINGS:

US STATE PLANE 1983  
CO NORTH 0501 GRID

### BASIS OF ELEVATION

SPOT ELEVATION AT THE NW CORNER OF SECTION 9,  
T7N, R80W, 6TH PM, TAKEN FROM THE COALMONT  
QUADRANGLE, USGS 7.5 MIN QUAD (TOPOGRAPHIC MAP)  
WITH SAID ELEVATION MARKED AS BEING 8091 FEET.

GRAPHIC SCALE 1"=1000'



I RANDALL R. MILLER, BEING A REGISTERED LAND SURVEYOR IN THE  
STATE OF COLORADO, DO HEREBY CERTIFY THAT THE SURVEY  
MADE BY ME AND/OR UNDER MY DIRECT SUPERVISION AND  
IS ACCURATE TO THE BEST OF MY KNOWLEDGE.

DATED THIS \_\_\_\_\_ DAY OF \_\_\_\_\_

RANDALL R. MILLER, COLORADO PLS NO. 38084

38084  
8/30/2016



## NORTH PARK ENGINEERING & CONSULTING, INC.

P.O. BOX 395  
WALDEN, CO 80480  
(970) 723-3725

DATE OF FIELD WORK: FEB 19, 2016 DRAWING COMPLETION: MAR 16, 2016  
SURVEYED BY: FFM DRAWN BY: TKH CHECKED BY: FFM  
REVISED: 8/22/16

### LEGEND

90° SYMBOL  
FOUND CORNER  
PROPOSED WELL  
PROPOSED BHL/LPL



### NAD 83 (SURFACE LOCATION)

LATITUDE=40.585619°N  
LONGITUDE=106.387480°W PDOP = 1.411

### NAD 83 (TARGET BOTTOM HOLE)

LATITUDE=40.556583°N  
LONGITUDE=106.391826°W

### NAD 83 (LANDING POINT LOCATION)

LATITUDE=40.583699°N  
LONGITUDE=106.391593°W

