

T7N, R80W, 6th P.M.

# SandRidge Exploration & Production, LLC

Well 1 location, Castle 0780 6-17H20 located as shown in the SW1/4SW1/4 of Section 9, T7N, R80W, 6th P.M., Jackson County, Colorado.

## BASIS OF BEARINGS:

US STATE PLANE 1983  
CO NORTH 0501 GRID

## BASIS OF ELEVATION

SPOT ELEVATION AT THE NW CORNER OF SECTION 9, T7N, R80W, 6TH PM, TAKEN FROM THE COALMONT QUADRANGLE, USGS 7.5 MIN QUAD (TOPOGRAPHIC MAP) WITH SAID ELEVATION MARKED AS BEING 8091 FEET.

GRAPHIC SCALE 1"=1000'

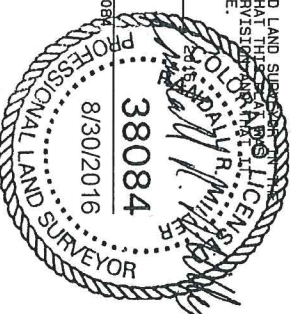
1000 0 1000



I RANDALL R. MILLER, BEING A REGISTERED LAND SURVEYOR IN THE STATE OF COLORADO, DO HEREBY CERTIFY THAT THIS SURVEY WAS MADE BY ME AND/OR UNDER MY DIRECT SUPERVISION AND THAT IT IS ACCURATE TO THE BEST OF MY KNOWLEDGE.

DATED THIS \_\_\_\_\_ DAY OF \_\_\_\_\_

RANDALL R. MILLER, COLORADO PLS NO. 38084



NORTH PARK ENGINEERING & CONSULTING, INC.

P.O. BOX 395  
WALDEN, CO 80480  
(970) 723-3725

DATE OF FIELD WORK: FEB 19, 2016 DRAWING COMPLETION: MAR 16, 2016

SURVEYED BY: RRM

DRAWN BY: TKH

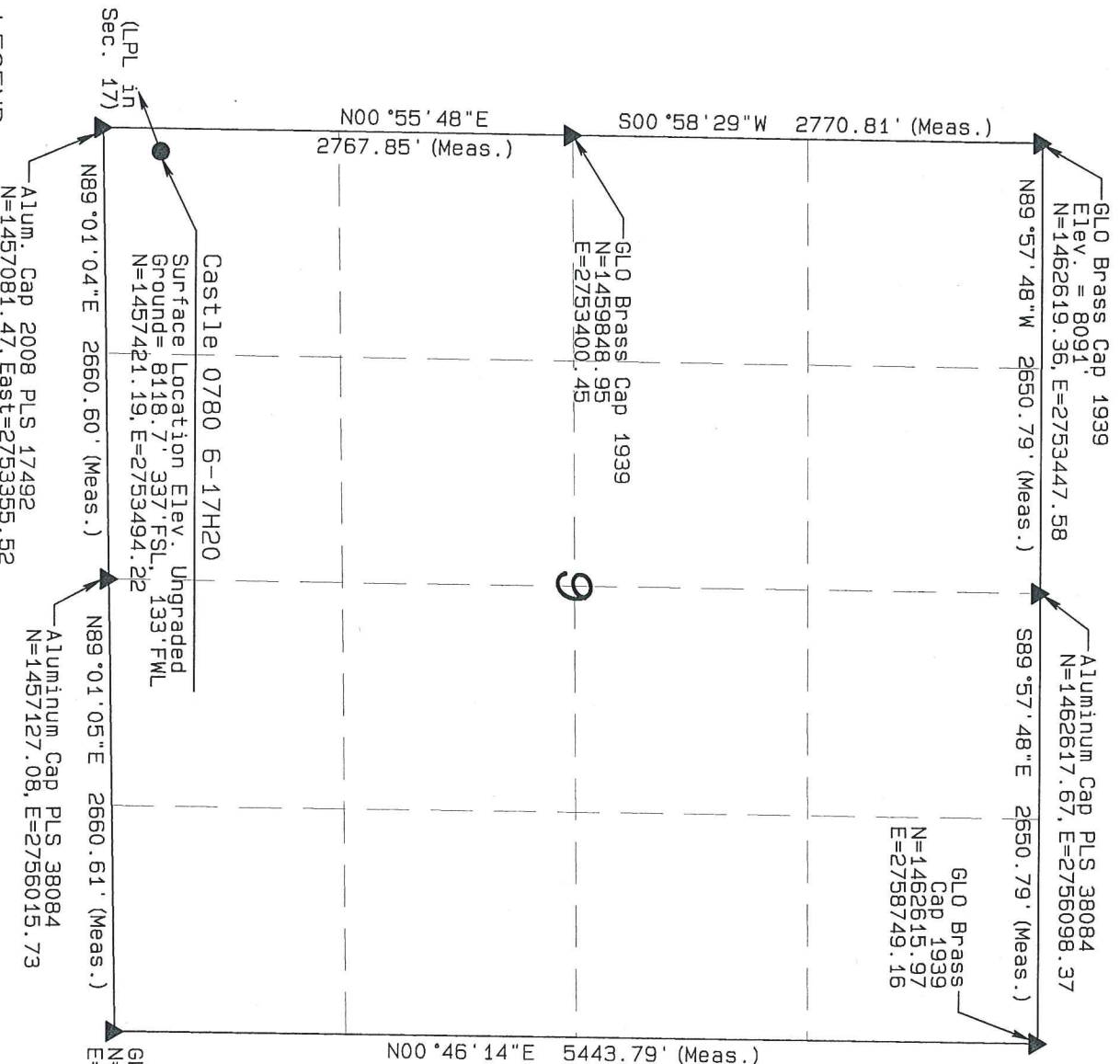
CHECKED BY: RRM

REVISED: 8/22/16

## LEGEND

90° SYMBOL  
FOUND CORNER  
PROPOSED WELL  
PROPOSED BHL/LPL

NAD 83 (TARGET BOTTOM HOLE)	NAD 83 (SURFACE LOCATION)
LATITUDE=40.556533°N LONGITUDE=106.394203°W	LATITUDE=40.585633°N LONGITUDE=106.387532°W
	PDOP = 1.422
NAD 83 (LANDING POINT LOCATION)	
LATITUDE=40.563721°N LONGITUDE=106.393969°W	



T7N, R80W, 6th P.M.

**SandRidge Exploration & Production, LLC**

Well location, Castle 0780 6-17H20 located as shown in the S1/2SE1/4 of Section 8, T7N, R80W, 6th P.M., Jackson County, Colorado.

**BASIS OF BEARINGS:**

US STATE PLANE 1983  
CO NORTH 0501 GRID

**BASIS OF ELEVATION**

SPOT ELEVATION AT THE NW CORNER OF SECTION 9, T7N, R80W, 6TH PM, TAKEN FROM THE COALMONT QUADRANGLE, USGS 7.5 MIN QUAD (TOPOGRAPHIC MAP) WITH SAID ELEVATION MARKED AS BEING 8091 FEET.

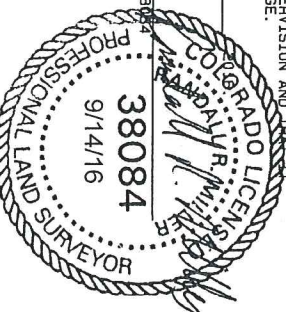
GRAPHIC SCALE 1"=1000'



I, RANDALL R. MILLER, BEING A REGISTERED LAND SURVEYOR IN THE STATE OF COLORADO, DO HEREBY CERTIFY THAT THIS PLAT WAS MADE BY ME, AND/OR UNDER MY DIRECT SUPERVISION AND THAT IT IS ACCURATE TO THE BEST OF MY KNOWLEDGE.

DATED THIS \_\_\_\_\_ DAY OF \_\_\_\_\_

RANDALL R. MILLER, COLORADO PLS NO. 38084



**NORTH PARK ENGINEERING & CONSULTING, INC.**  
P.O. Box 395  
WALDEN, CO 80480  
(970) 723-3725

DATE OF FIELD WORK: FEB 19, 2016  
DRAWING COMPLETION: MAR 16, 2016

SURVEYED BY: RHM  
DRAWN BY: TGH  
CHECKED BY: RHM  
REVISED: 9/14/16

**LEGEND**

90° SYMBOL  
FOUND CORNER  
PROPOSED WELL  
PROPOSED BHL/LPL

NAD 83 (SURFACE LOCATION)	NAD 83 (TARGET BOTTOM HOLE)
LATITUDE=40.585633°N LONGITUDE=106.384532°W PDOP = 1.422	LATITUDE=40.556533°N LONGITUDE=106.394203°W
NAD 83 (LANDING POINT LOCATION)	
LATITUDE=40.563721°N LONGITUDE=106.393989°W	

T7N, R80W, 6th P.M.

## SandRidge Exploration & Production, LLC

Landing Point Location, Castle 0780 6-17H20  
as shown in the NW1/4NE1/4 of Section 17, T7N,  
R80W, 6th P.M., Jackson County, Colorado.

### BASIS OF BEARINGS:

US STATE PLANE 1983  
CO NORTH 0501 GRID

### BASIS OF ELEVATION

SPOT ELEVATION AT THE NW CORNER OF SECTION 9,  
T7N, R80W, 6TH PM, TAKEN FROM THE COALMONT  
QUADRANGLE, USGS 7.5 MIN QUAD (TOPOGRAPHIC MAP)  
WITH SAID ELEVATION MARKED AS BEING 8091 FEET.

Alum. Cap 2008  
PLS 17492  
N=1454453.54,  
E=2753310.02

GRAPHIC SCALE 1"=1000'



I RANDALL R. MILLER, BEING A REGISTERED LAND SURVEYOR IN THE  
STATE OF COLORADO, DO HEREBY CERTIFY THAT THE SURVEY  
MADE BY ME AND/OR UNDER MY DIRECT SUPERVISION AND THAT THIS  
IS ACCURATE TO THE BEST OF MY KNOWLEDGE.

DATED THIS \_\_\_\_\_ DAY OF \_\_\_\_\_

RANDALL R. MILLER, COLORADO PLS NO. 38084



GLO Brass Cap 1939  
N=1451814.71, E=2753283.04

NORTH PARK ENGINEERING &  
CONSULTING, INC.

P.O. BOX 395  
WALDEN, CO 80480  
(970) 723-3725

DATE OF FIELD WORK: FEB 19, 2016 DRAWING COMPLETION: MAR 16, 2016  
SURVEYED BY: FFM DRAWN BY: TKH CHECKED BY: FFM  
REVISED: 8/22/16

### LEGEND

90° SYMBOL  
FOUND CORNER  
PROPOSED WELL  
PROPOSED BHL/LPL



### NAD 83 (SURFACE LOCATION)

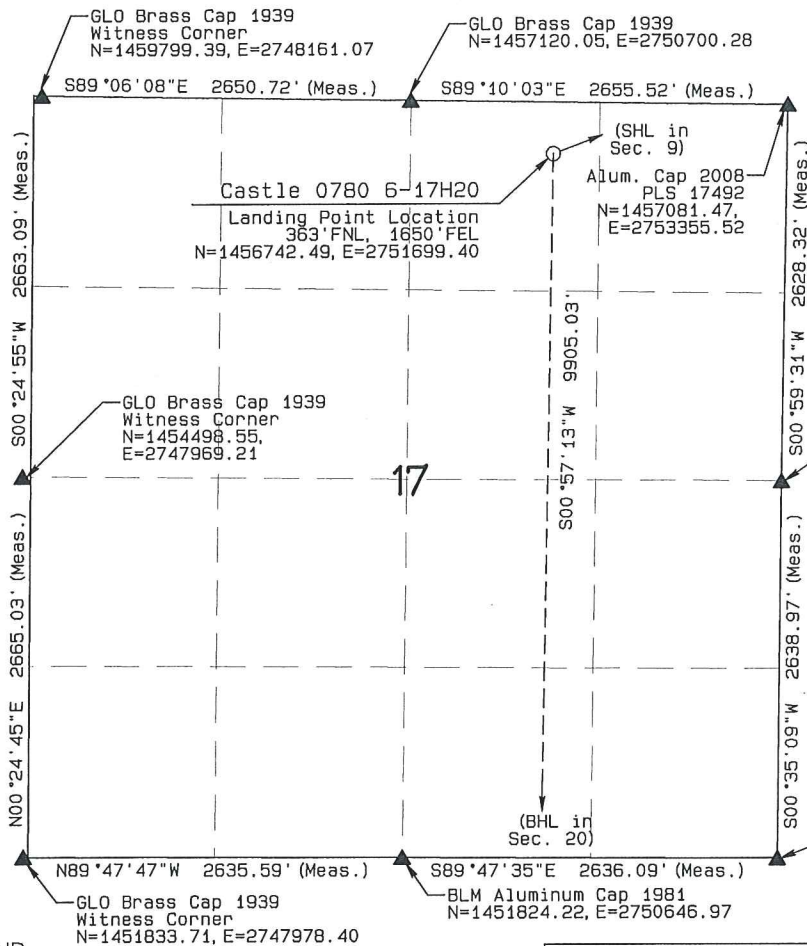
LATITUDE=40.585633°N  
LONGITUDE=106.387532°W PDOP = 1.422

### NAD 83 (TARGET BOTTOM HOLE)

LATITUDE=40.556533°N  
LONGITUDE=106.394203°W

### NAD 83 (LANDING POINT LOCATION)

LATITUDE=40.583721°N  
LONGITUDE=106.393969°W





T7N, R80W, 6th P.M.

## SandRidge Exploration & Production, LLC

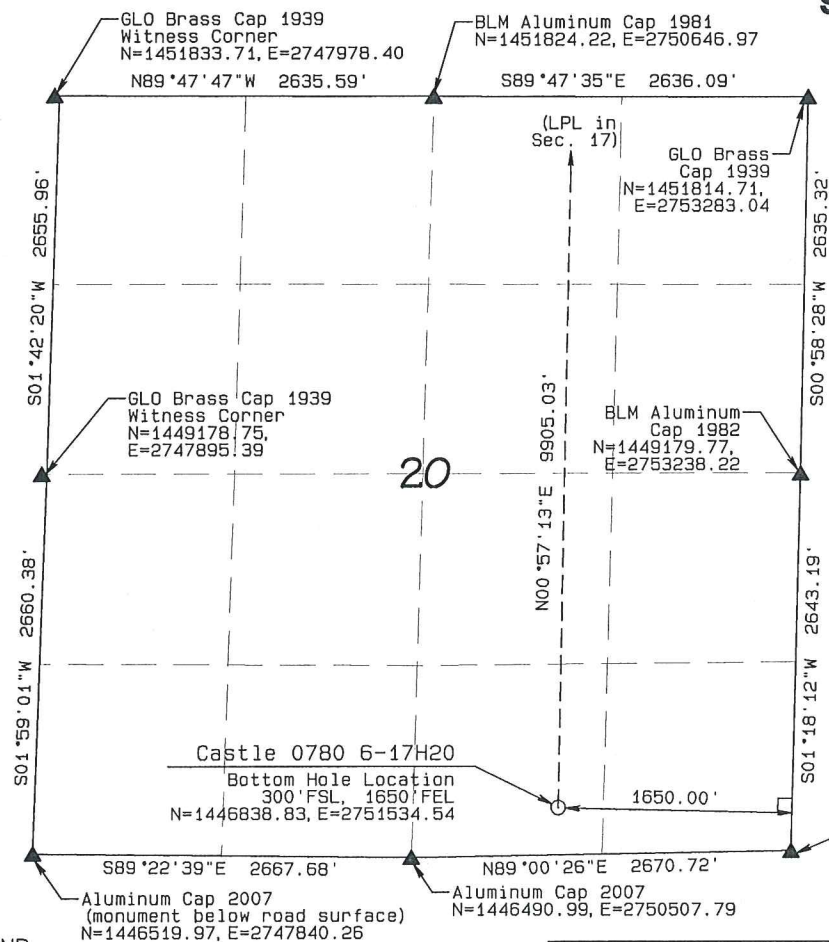
Bottom Hole Location, Castle 0780 6-17H20  
as shown in the SW1/4SE1/4 of Section 20, T7N,  
R80W, 6th P.M., Jackson County, Colorado.

### BASIS OF BEARINGS:

US STATE PLANE 1983  
CO NORTH 0501 GRID

### BASIS OF ELEVATION

SPOT ELEVATION AT THE NW CORNER OF SECTION 9,  
T7N, R80W, 6TH PM, TAKEN FROM THE COALMONT  
QUADRANGLE, USGS 7.5 MIN QUAD (TOPOGRAPHIC MAP)  
WITH SAID ELEVATION MARKED AS BEING 8091 FEET.



GRAPHIC SCALE 1"=1000'



I RANDALL R. MILLER, BEING A REGISTERED LAND SURVEYOR OF THE  
STATE OF COLORADO, DO HEREBY CERTIFY THAT THE SURVEY  
MADE BY ME AND/OR UNDER MY DIRECT SUPERVISION AND THAT  
IS ACCURATE TO THE BEST OF MY KNOWLEDGE.

DATED THIS \_\_\_\_\_ DAY OF \_\_\_\_\_

RANDALL R. MILLER, COLORADO PLS NO. 38084



GLO Brass Cap 1939  
N=1446537.26, E=2753178.10

### LEGEND

90° SYMBOL  
FOUND CORNER  
PROPOSED WELL  
PROPOSED BHL/LPL



### NAD 83 (SURFACE LOCATION)

LATITUDE=40.585633°N  
LONGITUDE=106.387532°W PDOP = 1.422

### NAD 83 (TARGET BOTTOM HOLE)

LATITUDE=40.556533°N  
LONGITUDE=106.394203°W

### NAD 83 (LANDING POINT LOCATION)

LATITUDE=40.583721°N  
LONGITUDE=106.393969°W

## NORTH PARK ENGINEERING & CONSULTING, INC.

P.O. BOX 395  
WALDEN, CO 80480  
(970) 723-3725

DATE OF FIELD WORK: FEB 19, 2016 DRAWING COMPLETION: MAR 16, 2016  
SURVEYED BY: RFM DRAWN BY: TKH CHECKED BY: RFM  
REVISED: 8/22/16