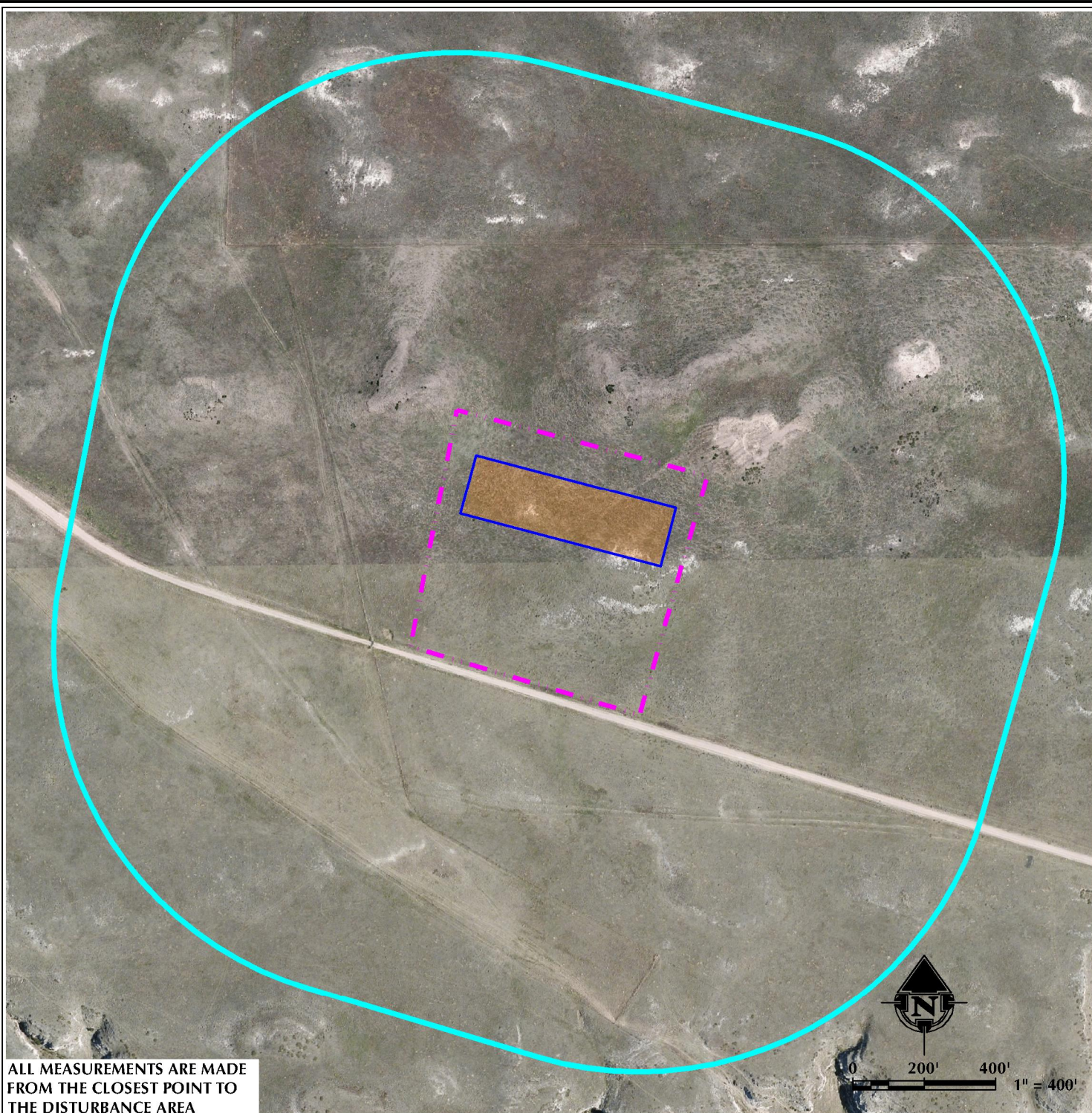


K:\GRYNBERG PETROLEUM\2015\_127\_GRYNBERG STATELINE FED. 24-12-65-4-JH\DWG\LOCATION DWG\STATELINE FED. 24-12-65-4-JH - 1000'.dwg, 2/26/2016 3:45:21 PM, .pnn



<div>LEGEND</div> <div><div><div></div></div> DISTURBANCE AREA</div> <div><div></div> 1000' BUFFER</div> <div><div></div> PROPOSED FACILITY</div> <div><div></div> EXISTING BUILDINGS</div> <div><div></div> RESIDENCE/BUILDING UNIT</div>	<div>BUILDINGS</div> <div>NO BUILDINGS WITHIN 1000'</div>	<div>BUILDING UNITS</div> <div>NO BUILDING UNITS WITHIN 1000'</div>
<div>NOTIFICATION DRAWING - GRYNBERG STATELINE FEDERAL 24-12-65-4-JH</div> <div><div>WELL PAD - NOTIFICATION DRAWING</div><div>GRYNBERG STATELINE FEDERAL 24-12-65-4-JH</div><div>LOCATED IN NW1/4 NW1/4</div><div>SECTION 24, T12N, R65W, 6TH P.M.</div><div>WELD COUNTY, COLORADO</div></div>	<div>Grynberg Jack J DBA</div> <div>Grynberg Petroleum Co.</div> <div>3600 S. Yosemite, Suite 900</div> <div>Denver, Colorado 80237</div>	<div><div><div></div></div><div>609</div><div>CONSULTING, LLC</div><div><div>SHERIDAN OFFICE</div><div>1095 Saberton Avenue</div><div>Sheridan, Wyoming 82801</div><div>Phone 307-674-0609</div></div><div><div>LOVELAND OFFICE</div><div>1635 Foxtrail Drive, Suite 204</div><div>Loveland, Colorado 80538</div><div>Phone 970-776-4331</div></div></div> <div><div><div>DATA SOURCES:</div><div>- AERIAL COURTESY OF</div><div>ESRI, INC.</div></div><div><div>DATE:</div><div>2/24/16</div></div><div><div>INITIALS:</div><div>RAL</div></div><div><div>SCALE:</div><div>1"=400'</div></div><div><div>REVISED:</div><div></div></div><div><div>SHEET NO:</div><div>1</div><div>1 OF 1</div></div></div>