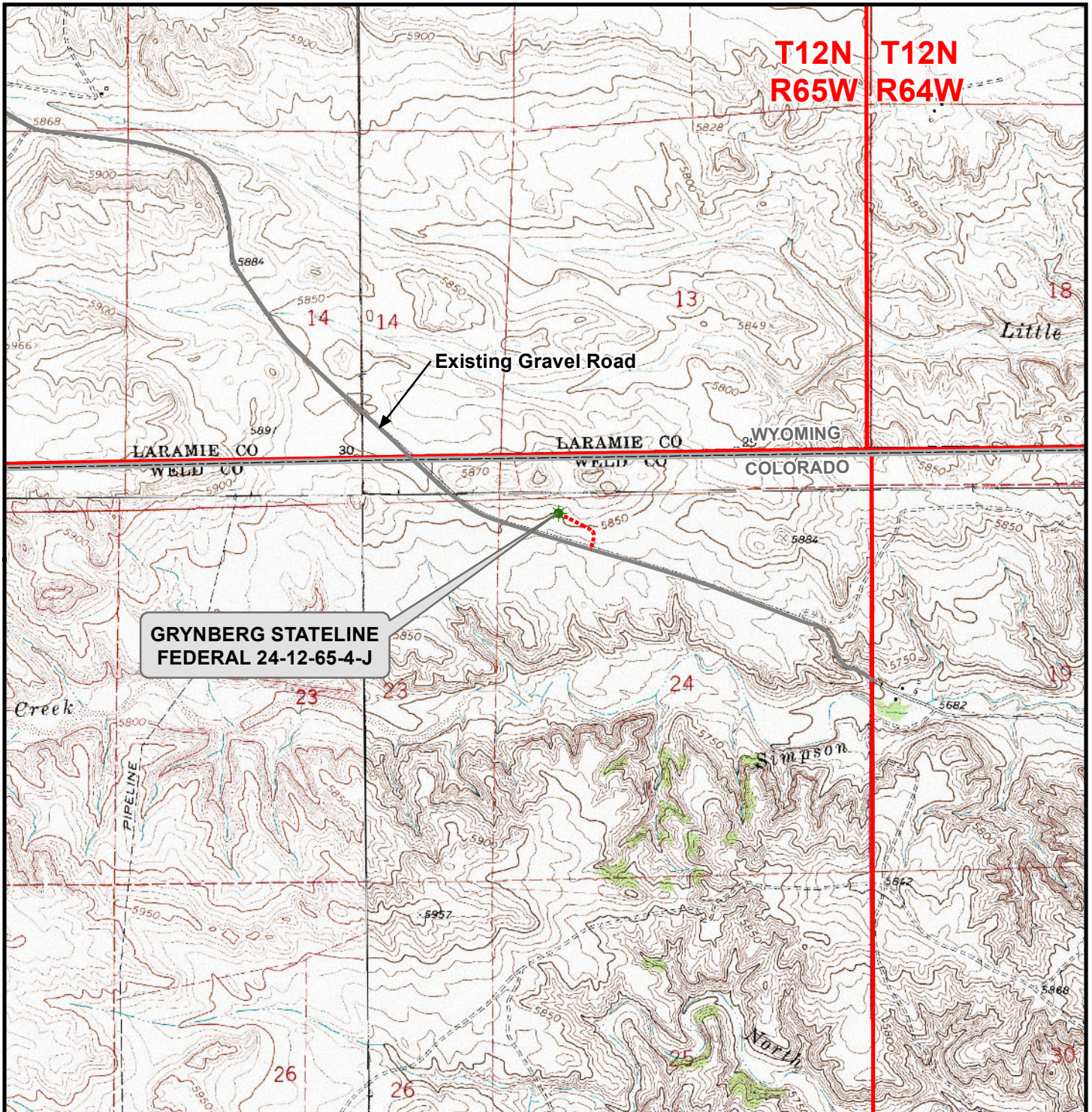


K:\GRYNBERG_PETROLEUM\2015_127_GRYNBERG STATELINE FED. 24-12-61-1-J\GIS\Maps_ABC\Grynberg 24-12-65-4-J.mxd 7/29/2016 10:52:05 AM



Legend

- ★ Well - Federal - Proposed === Road - Primitive - Existing — Road - County - Existing
..... Road - Proposed — Road - Improved - Existing — Road - Highway - Existing

WELL PAD - GRYNBERG STATELINE FEDERAL 24-12-65-4-J

GENERAL LOCATION MAP
GRYNBERG STATELINE FEDERAL 24-12-65-4-J
LOCATED IN SECTION 24
T12N, R65W, 6th P.M.
WELD COUNTY, COLORADO

**Grynberg Jack J DBA
Grynberg Petroleum Co.**

**3600 S. Yosemite, Suite 900
Denver, Colorado 80237**



CONSULTING, LLC

SHERIDAN OFFICE 1095 Saberton Avenue
Sheridan, Wyoming 82801 Phone 307-674-0609
LOVELAND OFFICE 1635 Foxtail Drive, Suite 204
Loveland, Colorado 80538 Phone 970-776-4331



SCALE: 1" = 2,000ft

NAD83 CO-Nft

DRAWN: JELO

DATE: 29 July 2016

REVISED:

DATE: