

T7N, R66W, 6th P.M.

GREAT WESTERN OPERATING COMPANY

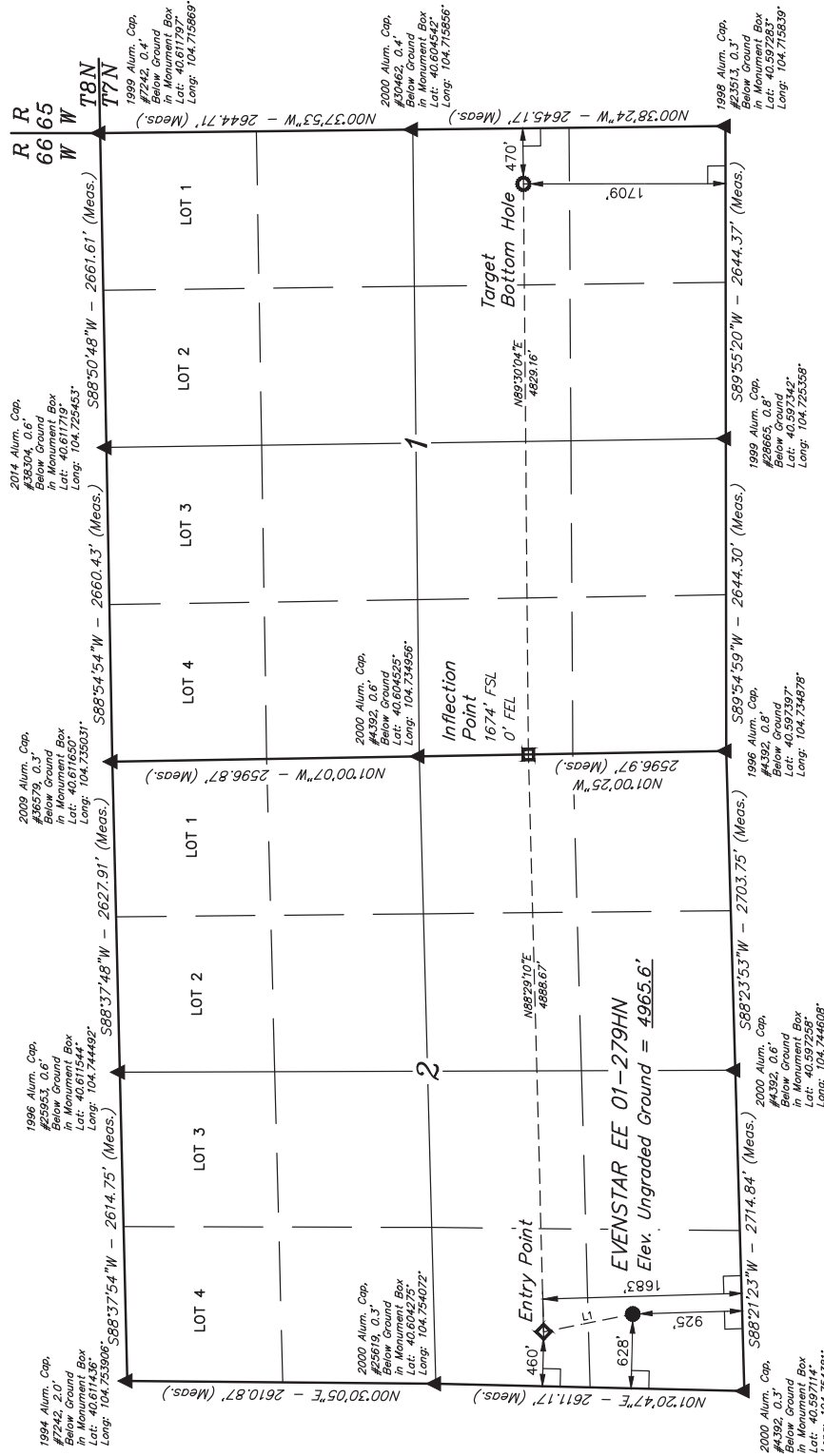
EVENSTAR EE 01-279HN  
SW 1/4 SW 1/4, SECTION 2, 17N, R66W, 6th P.M.  
WELD COUNTY, COLORADO

BASIS OF BEARINGS

BASIS OF BEARINGS IS A GPS OBSERVATION

BASIS OF ELEVATION

USGS COOPERATIVE BASE NETWORK CONTROL STATION:  
DESIGNATION "VERMILYEA"; NGS DATA SHEET LISTS THE NAVD  
88 ELEVATION AS BEING 5026 FEET.



LINE TABLE		
LINE	DIRECTION	LENGTH
L1	N11°18'30"W	768.89'

LEGEND:

- 90° SYMBOL
- PROPOSED WELLHEAD.
- ENTRY POINT.
- INFLECTION POINT.
- TARGET BOTTOM HOLE.
- SECTION CORNERS LOCATED. (NAD 83)

PDOP = 1.2

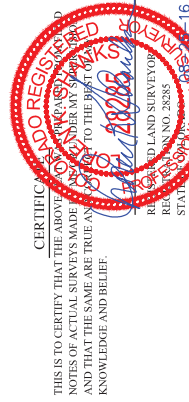


UELS, LLC  
Corporate Office \* 85 South 200 East  
Vernal, UT 84078 \* (435) 789-1017

SURVEYED BY	JARED CHRISTOPHER, D.S.	08-23-16	SCALE
DRAWN BY	C.C.	09-11-15	1" = 1000'

(NAD 83)

WELL LOCATION PLAT



REV: 2 08-24-16 K.B. (SL MOVE)