

T7N, R66W, 6th P.M.

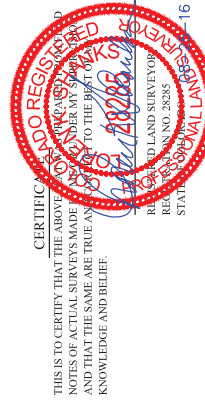
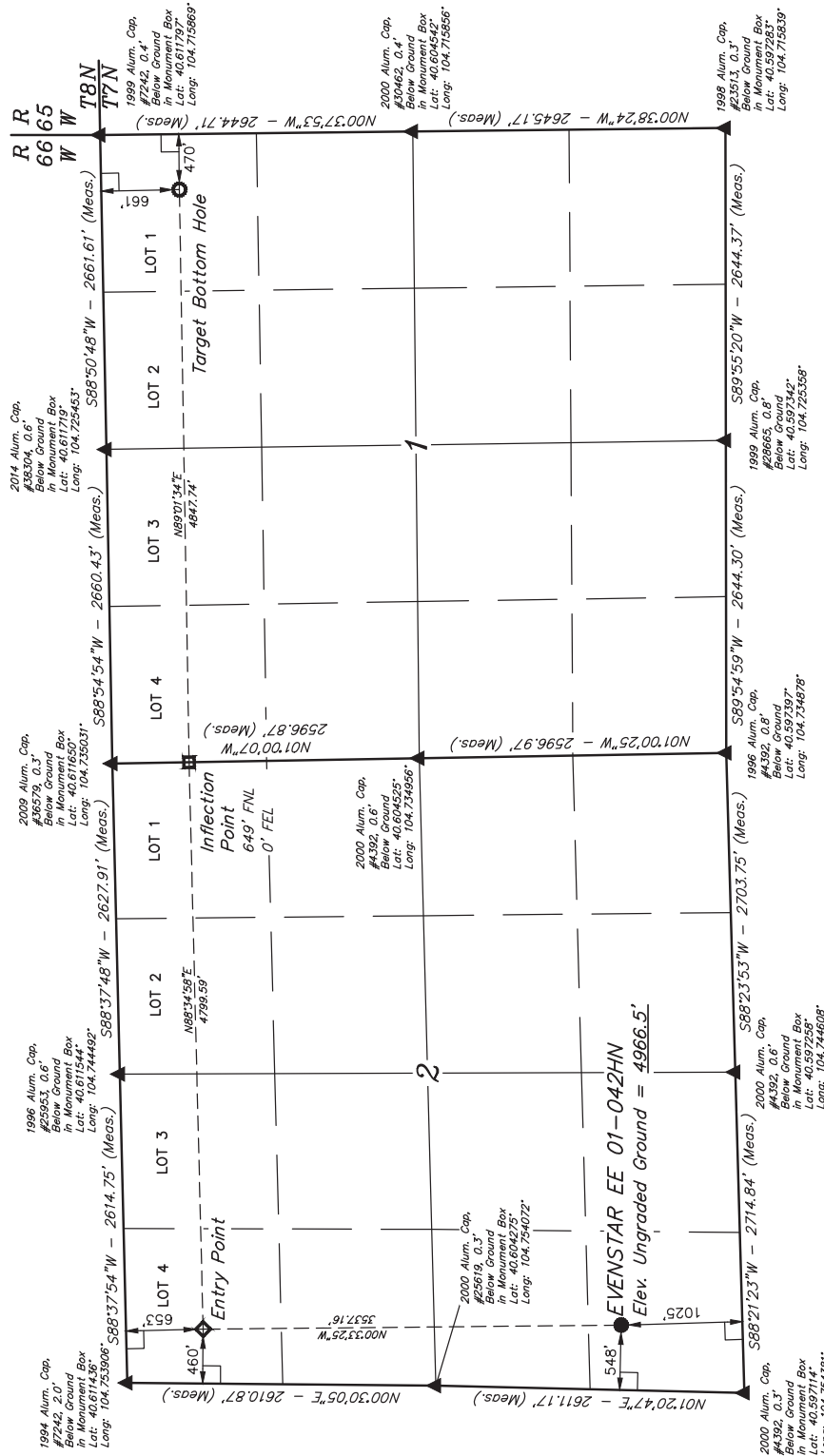
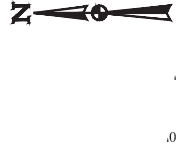
GREAT WESTERN OPERATING COMPANY

EVENSTAR EE 01-042HN
SW 1/4 SW 1/4, SECTION 2, 17N, R66W, 6th P.M.
WELD COUNTY, COLORADO

BASIS OF BEARINGS

BASIS OF ELEVATION

USGS COOPERATIVE BASE NETWORK CONTROL STATION:
DESIGNATION "VERMILYEA"; NGS DATA SHEET LISTS THE NAVD
88 ELEVATION AS BEING 5026 FEET.



REV:1 08-24-16 K.B. (SL MOVE)

LEGEND:

- 90° SYMBOL
- PROPOSED WELLHEAD.
- ENTRY POINT.
- INFLECTION POINT.
- TARGET BOTTOM HOLE.
- SECTION CORNERS LOCATED. (NAD 83)

PDOP = 1.3



UELS, LLC
Corporate Office * 85 South 200 East
Vernal, UT 84078 * (435) 789-1017

SURVEYED BY	JARED CHRISTOPHER, D.S.	08-23-16	SCALE
DRAWN BY	C.D.L.	07-26-16	1" = 1000'

WELL LOCATION PLAT