

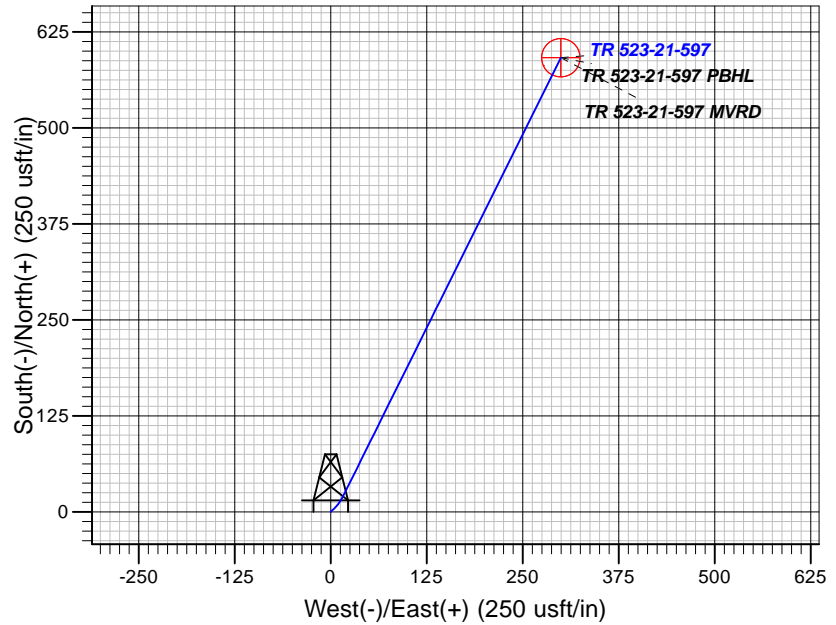
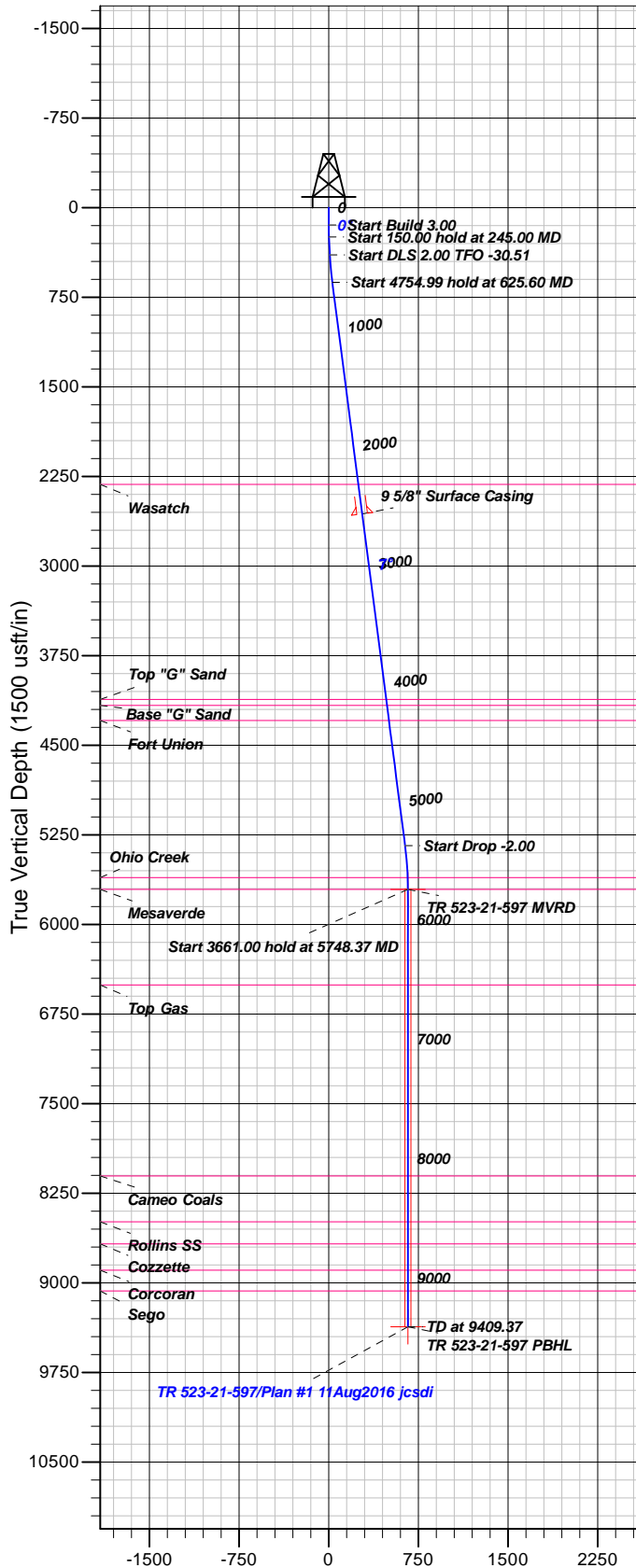
Well Details: TR 523-21-597

GL 8292' & RKB 24' @ 8316.00usft (H&P 318)

+N/-S	+E/-W	Northing	Easting	Latitude	Longitude	Slot
0.00	0.00	1653237.80	2215079.60	39.5938887	-108.2857387	B2

T M Azimuths to True North
Magnetic North: 9.83°

Magnetic Field
Strength: 51638.4snT
Dip Angle: 65.67°
Date: 8/11/2016
Model: BGGM2016



FORMATION TOP DETAILS

TVDP	MD	Formation
2316.00	2331.27	Wasatch
4116.00	4146.21	Top "G" Sand
4166.00	4196.62	Base "G" Sand
4292.00	4323.67	Fort Union
5607.00	5648.35	Ohio Creek
5707.00	5748.37	Mesaverde
6506.00	6547.37	Top Gas
8105.00	8146.37	Cameo Coals
8488.00	8529.37	Rollins SS
8673.00	8714.37	Cozzette
8894.00	8935.37	Corcoran
9068.00	9109.37	Sego

Plan: Plan #1 11Aug2016 jcsdi

10:13, August 19 2016
Created By: Janie Collins

PROJECT DETAILS: Garfield County, CO NAD83

Geodetic System: US State Plane 1983
Datum: North American Datum 1983
Ellipsoid: GRS 1980
Zone: Colorado Central Zone

System Datum: Mean Sea Level

CASING DETAILS

TVD	MD	Name	Size
2563.67	2581.09	5/8" Surface Casing	9.62

SECTION DETAILS

Sec	MD	Inc	Azi	TVD	+N/-S	+E/-W	Dleg	TFace	VSec	Target
1	0.00	0.00	0.00	0.00	0.00	0.00	0.00	0.00	0.00	
2	145.00	0.00	0.00	145.00	0.00	0.00	0.00	0.00	0.00	
3	245.00	3.00	45.00	244.95	1.85	1.85	3.00	45.00	2.49	
4	395.00	3.00	45.00	394.75	7.40	7.40	0.00	0.00	9.95	
5	625.60	7.36	26.41	624.37	24.90	18.24	2.00	-30.51	30.45	
6	5380.59	7.36	26.41	5340.23	570.15	288.99	0.00	0.00	639.21	
7	5748.37	0.00	0.00	5707.00	591.27	299.47	2.00	180.00	662.78	TR 523-21-597 MVRD
8	9409.37	0.00	0.00	9368.00	591.27	299.47	0.00	0.00	662.78	TR 523-21-597 PBHL

DESIGN TARGET DETAILS

Name	TVD	+N/-S	+E/-W	Northing	Easting	Latitude	Longitude	Shape
TR 523-21-597 MVRD5707.00	591.27	299.471653819.61	2215397.06	39.5955120	-108.2846760	Circle (Radius: 25.00)		
- plan hits target center								
TR 523-21-597 PBHL 9368.00	591.27	299.471653819.61	2215397.06	39.5955120	-108.2846760	Point		
- plan hits target center								



Terra Energy Partners

Garfield County, CO NAD83

TR 24-21-597 Pad

TR 523-21-597 - Slot B2

OH

Plan: Plan #1 11Aug2016 jcsdi

Standard Planning Report

19 August, 2016



Database:	Grand Junction District	Local Co-ordinate Reference:	Well TR 523-21-597 - Slot B2
Company:	Terra Energy Partners	TVD Reference:	GL 8292' & RKB 24' @ 8316.00usft (H&P 318)
Project:	Garfield County, CO NAD83	MD Reference:	GL 8292' & RKB 24' @ 8316.00usft (H&P 318)
Site:	TR 24-21-597 Pad	North Reference:	True
Well:	TR 523-21-597	Survey Calculation Method:	Minimum Curvature
Wellbore:	OH		
Design:	Plan #1 11Aug2016 jcsdi		

Project	Garfield County, CO NAD83		
Map System:	US State Plane 1983	System Datum:	Mean Sea Level
Geo Datum:	North American Datum 1983		
Map Zone:	Colorado Central Zone		

Site		TR 24-21-597 Pad			
Site Position:		Northing:	1,653,248.80 usft	Latitude:	39.5939185
From:	Map	Easting:	2,215,073.70 usft	Longitude:	-108.2857609
Position Uncertainty:	0.00 usft	Slot Radius:	13.20 in	Grid Convergence:	-1.76 °

Well	TR 523-21-597 - Slot B2					
Well Position	+N/-S	-10.81 usft	Northing:	1,653,237.80 usft	Latitude:	39.5938888
	+E/-W	6.23 usft	Easting:	2,215,079.60 usft	Longitude:	-108.2857387
Position Uncertainty		0.00 usft	Wellhead Elevation:	0.00 usft	Ground Level:	8,292.00 usft

Wellbore	OH				
Magnetics	Model Name	Sample Date	Declination (°)	Dip Angle (°)	Field Strength (nT)
	BGGM2016	8/11/2016	9.83	65.67	51,638

Design	Plan #1 11Aug2016 jcsdi			
Audit Notes:				
Version:	Phase:	PLAN	Tie On Depth:	0.00
Vertical Section:	Depth From (TVD) (usft)	+N/-S (usft)	+E/-W (usft)	Direction (°)
	0.00	0.00	0.00	26.86

Plan Sections										
Measured Depth (usft)	Inclination (°)	Azimuth (°)	Vertical Depth (usft)	+N/-S (usft)	+E/-W (usft)	Dogleg Rate (°/100usft)	Build Rate (°/100usft)	Turn Rate (°/100usft)	TFO (°)	Target
0.00	0.00	0.00	0.00	0.00	0.00	0.00	0.00	0.00	0.00	
145.00	0.00	0.00	145.00	0.00	0.00	0.00	0.00	0.00	0.00	
245.00	3.00	45.00	244.95	1.85	1.85	3.00	3.00	0.00	45.00	
395.00	3.00	45.00	394.75	7.40	7.40	0.00	0.00	0.00	0.00	
625.60	7.36	26.41	624.37	24.90	18.24	2.00	1.89	-8.06	-30.51	
5,380.59	7.36	26.41	5,340.23	570.15	288.99	0.00	0.00	0.00	0.00	
5,748.37	0.00	0.00	5,707.00	591.27	299.47	2.00	-2.00	0.00	180.00	TR 523-21-597 MVR
9,409.38	0.00	0.00	9,368.00	591.27	299.47	0.00	0.00	0.00	0.00	TR 523-21-597 PBHL

Database:	Grand Junction District	Local Co-ordinate Reference:	Well TR 523-21-597 - Slot B2
Company:	Terra Energy Partners	TVD Reference:	GL 8292' & RKB 24' @ 8316.00usft (H&P 318)
Project:	Garfield County, CO NAD83	MD Reference:	GL 8292' & RKB 24' @ 8316.00usft (H&P 318)
Site:	TR 24-21-597 Pad	North Reference:	True
Well:	TR 523-21-597	Survey Calculation Method:	Minimum Curvature
Wellbore:	OH		
Design:	Plan #1 11Aug2016 jcsdi		

Planned Survey										
Measured Depth (usft)	Inclination (°)	Azimuth (°)	Vertical Depth (usft)	+N/-S (usft)	+E/-W (usft)	Vertical Section (usft)	Dogleg Rate (°/100usft)	Build Rate (°/100usft)	Turn Rate (°/100usft)	
0.00	0.00	0.00	0.00	0.00	0.00	0.00	0.00	0.00	0.00	
100.00	0.00	0.00	100.00	0.00	0.00	0.00	0.00	0.00	0.00	
145.00	0.00	0.00	145.00	0.00	0.00	0.00	0.00	0.00	0.00	
200.00	1.65	45.00	199.99	0.56	0.56	0.75	3.00	3.00	0.00	
245.00	3.00	45.00	244.95	1.85	1.85	2.49	3.00	3.00	0.00	
300.00	3.00	45.00	299.88	3.89	3.89	5.22	0.00	0.00	0.00	
395.00	3.00	45.00	394.75	7.40	7.40	9.95	0.00	0.00	0.00	
400.00	3.09	44.06	399.74	7.59	7.59	10.20	2.00	1.73	-18.86	
500.00	4.93	32.49	499.49	13.15	11.77	17.05	2.00	1.84	-11.57	
600.00	6.86	27.30	598.96	22.07	16.81	27.29	2.00	1.93	-5.19	
625.60	7.36	26.41	624.37	24.90	18.24	30.45	2.00	1.95	-3.48	
700.00	7.36	26.41	698.15	33.43	22.48	39.98	0.00	0.00	0.00	
800.00	7.36	26.41	797.33	44.90	28.17	52.78	0.00	0.00	0.00	
900.00	7.36	26.41	896.51	56.37	33.86	65.58	0.00	0.00	0.00	
1,000.00	7.36	26.41	995.68	67.83	39.56	78.39	0.00	0.00	0.00	
1,100.00	7.36	26.41	1,094.86	79.30	45.25	91.19	0.00	0.00	0.00	
1,200.00	7.36	26.41	1,194.04	90.77	50.95	103.99	0.00	0.00	0.00	
1,300.00	7.36	26.41	1,293.22	102.23	56.64	116.79	0.00	0.00	0.00	
1,400.00	7.36	26.41	1,392.39	113.70	62.33	129.60	0.00	0.00	0.00	
1,500.00	7.36	26.41	1,491.57	125.17	68.03	142.40	0.00	0.00	0.00	
1,600.00	7.36	26.41	1,590.75	136.63	73.72	155.20	0.00	0.00	0.00	
1,700.00	7.36	26.41	1,689.92	148.10	79.42	168.00	0.00	0.00	0.00	
1,800.00	7.36	26.41	1,789.10	159.57	85.11	180.81	0.00	0.00	0.00	
1,900.00	7.36	26.41	1,888.28	171.03	90.80	193.61	0.00	0.00	0.00	
2,000.00	7.36	26.41	1,987.46	182.50	96.50	206.41	0.00	0.00	0.00	
2,100.00	7.36	26.41	2,086.63	193.97	102.19	219.21	0.00	0.00	0.00	
2,200.00	7.36	26.41	2,185.81	205.44	107.89	232.02	0.00	0.00	0.00	
2,300.00	7.36	26.41	2,284.99	216.90	113.58	244.82	0.00	0.00	0.00	
2,331.27	7.36	26.41	2,316.00	220.49	115.36	248.82	0.00	0.00	0.00	
Wasatch										
2,400.00	7.36	26.41	2,384.16	228.37	119.27	257.62	0.00	0.00	0.00	
2,500.00	7.36	26.41	2,483.34	239.84	124.97	270.42	0.00	0.00	0.00	
2,581.00	7.36	26.41	2,563.67	249.13	129.58	280.79	0.00	0.00	0.00	
9 5/8" Surface Casing										
2,600.00	7.36	26.41	2,582.52	251.30	130.66	283.23	0.00	0.00	0.00	
2,700.00	7.36	26.41	2,681.69	262.77	136.36	296.03	0.00	0.00	0.00	
2,800.00	7.36	26.41	2,780.87	274.24	142.05	308.83	0.00	0.00	0.00	
2,900.00	7.36	26.41	2,880.05	285.70	147.74	321.63	0.00	0.00	0.00	
3,000.00	7.36	26.41	2,979.23	297.17	153.44	334.44	0.00	0.00	0.00	
3,100.00	7.36	26.41	3,078.40	308.64	159.13	347.24	0.00	0.00	0.00	
3,200.00	7.36	26.41	3,177.58	320.11	164.83	360.04	0.00	0.00	0.00	
3,300.00	7.36	26.41	3,276.76	331.57	170.52	372.84	0.00	0.00	0.00	
3,400.00	7.36	26.41	3,375.93	343.04	176.21	385.65	0.00	0.00	0.00	
3,500.00	7.36	26.41	3,475.11	354.51	181.91	398.45	0.00	0.00	0.00	
3,600.00	7.36	26.41	3,574.29	365.97	187.60	411.25	0.00	0.00	0.00	
3,700.00	7.36	26.41	3,673.47	377.44	193.30	424.05	0.00	0.00	0.00	
3,800.00	7.36	26.41	3,772.64	388.91	198.99	436.86	0.00	0.00	0.00	
3,900.00	7.36	26.41	3,871.82	400.37	204.68	449.66	0.00	0.00	0.00	
4,000.00	7.36	26.41	3,971.00	411.84	210.38	462.46	0.00	0.00	0.00	
4,100.00	7.36	26.41	4,070.17	423.31	216.07	475.26	0.00	0.00	0.00	
4,146.21	7.36	26.41	4,116.00	428.61	218.70	481.18	0.00	0.00	0.00	
Top "G" Sand										

Database:	Grand Junction District	Local Co-ordinate Reference:	Well TR 523-21-597 - Slot B2
Company:	Terra Energy Partners	TVD Reference:	GL 8292' & RKB 24' @ 8316.00usft (H&P 318)
Project:	Garfield County, CO NAD83	MD Reference:	GL 8292' & RKB 24' @ 8316.00usft (H&P 318)
Site:	TR 24-21-597 Pad	North Reference:	True
Well:	TR 523-21-597	Survey Calculation Method:	Minimum Curvature
Wellbore:	OH		
Design:	Plan #1 11Aug2016 jcsdi		

Planned Survey									
Measured Depth (usft)	Inclination (°)	Azimuth (°)	Vertical Depth (usft)	+N/-S (usft)	+E/-W (usft)	Vertical Section (usft)	Dogleg Rate (°/100usft)	Build Rate (°/100usft)	Turn Rate (°/100usft)
4,196.62	7.36	26.41	4,166.00	434.39	221.57	487.63	0.00	0.00	0.00
Base "G" Sand									
4,200.00	7.36	26.41	4,169.35	434.78	221.76	488.07	0.00	0.00	0.00
4,300.00	7.36	26.41	4,268.53	446.24	227.46	500.87	0.00	0.00	0.00
4,323.67	7.36	26.41	4,292.00	448.96	228.81	503.90	0.00	0.00	0.00
Fort Union									
4,400.00	7.36	26.41	4,367.70	457.71	233.15	513.67	0.00	0.00	0.00
4,500.00	7.36	26.41	4,466.88	469.18	238.85	526.47	0.00	0.00	0.00
4,600.00	7.36	26.41	4,566.06	480.64	244.54	539.27	0.00	0.00	0.00
4,700.00	7.36	26.41	4,665.24	492.11	250.23	552.08	0.00	0.00	0.00
4,800.00	7.36	26.41	4,764.41	503.58	255.93	564.88	0.00	0.00	0.00
4,900.00	7.36	26.41	4,863.59	515.04	261.62	577.68	0.00	0.00	0.00
5,000.00	7.36	26.41	4,962.77	526.51	267.32	590.48	0.00	0.00	0.00
5,100.00	7.36	26.41	5,061.94	537.98	273.01	603.29	0.00	0.00	0.00
5,200.00	7.36	26.41	5,161.12	549.45	278.70	616.09	0.00	0.00	0.00
5,300.00	7.36	26.41	5,260.30	560.91	284.40	628.89	0.00	0.00	0.00
5,380.59	7.36	26.41	5,340.23	570.15	288.99	639.21	0.00	0.00	0.00
5,400.00	6.97	26.41	5,359.48	572.32	290.06	641.63	2.00	-2.00	0.00
5,500.00	4.97	26.41	5,458.94	581.63	294.69	652.02	2.00	-2.00	0.00
5,600.00	2.97	26.41	5,558.69	587.83	297.76	658.94	2.00	-2.00	0.00
5,648.35	2.00	26.41	5,607.00	589.71	298.70	661.04	2.00	-2.00	0.00
Ohio Creek									
5,700.00	0.97	26.41	5,658.63	590.90	299.29	662.38	2.00	-2.00	0.00
5,748.37	0.00	0.00	5,707.00	591.27	299.47	662.78	2.00	-2.00	0.00
Mesaverde - TR 523-21-597 MVRD									
5,800.00	0.00	0.00	5,758.63	591.27	299.47	662.78	0.00	0.00	0.00
5,900.00	0.00	0.00	5,858.63	591.27	299.47	662.78	0.00	0.00	0.00
6,000.00	0.00	0.00	5,958.63	591.27	299.47	662.78	0.00	0.00	0.00
6,100.00	0.00	0.00	6,058.63	591.27	299.47	662.78	0.00	0.00	0.00
6,200.00	0.00	0.00	6,158.63	591.27	299.47	662.78	0.00	0.00	0.00
6,300.00	0.00	0.00	6,258.63	591.27	299.47	662.78	0.00	0.00	0.00
6,400.00	0.00	0.00	6,358.63	591.27	299.47	662.78	0.00	0.00	0.00
6,500.00	0.00	0.00	6,458.63	591.27	299.47	662.78	0.00	0.00	0.00
6,547.38	0.00	0.00	6,506.00	591.27	299.47	662.78	0.00	0.00	0.00
Top Gas									
6,600.00	0.00	0.00	6,558.63	591.27	299.47	662.78	0.00	0.00	0.00
6,700.00	0.00	0.00	6,658.63	591.27	299.47	662.78	0.00	0.00	0.00
6,800.00	0.00	0.00	6,758.63	591.27	299.47	662.78	0.00	0.00	0.00
6,900.00	0.00	0.00	6,858.63	591.27	299.47	662.78	0.00	0.00	0.00
7,000.00	0.00	0.00	6,958.63	591.27	299.47	662.78	0.00	0.00	0.00
7,100.00	0.00	0.00	7,058.63	591.27	299.47	662.78	0.00	0.00	0.00
7,200.00	0.00	0.00	7,158.63	591.27	299.47	662.78	0.00	0.00	0.00
7,300.00	0.00	0.00	7,258.63	591.27	299.47	662.78	0.00	0.00	0.00
7,400.00	0.00	0.00	7,358.63	591.27	299.47	662.78	0.00	0.00	0.00
7,500.00	0.00	0.00	7,458.63	591.27	299.47	662.78	0.00	0.00	0.00
7,600.00	0.00	0.00	7,558.63	591.27	299.47	662.78	0.00	0.00	0.00
7,700.00	0.00	0.00	7,658.63	591.27	299.47	662.78	0.00	0.00	0.00
7,800.00	0.00	0.00	7,758.63	591.27	299.47	662.78	0.00	0.00	0.00
7,900.00	0.00	0.00	7,858.63	591.27	299.47	662.78	0.00	0.00	0.00
8,000.00	0.00	0.00	7,958.63	591.27	299.47	662.78	0.00	0.00	0.00
8,100.00	0.00	0.00	8,058.63	591.27	299.47	662.78	0.00	0.00	0.00

Database:	Grand Junction District	Local Co-ordinate Reference:	Well TR 523-21-597 - Slot B2
Company:	Terra Energy Partners	TVD Reference:	GL 8292' & RKB 24' @ 8316.00usft (H&P 318)
Project:	Garfield County, CO NAD83	MD Reference:	GL 8292' & RKB 24' @ 8316.00usft (H&P 318)
Site:	TR 24-21-597 Pad	North Reference:	True
Well:	TR 523-21-597	Survey Calculation Method:	Minimum Curvature
Wellbore:	OH		
Design:	Plan #1 11Aug2016 jcsdi		

Planned Survey									
Measured Depth (usft)	Inclination (°)	Azimuth (°)	Vertical Depth (usft)	+N/-S (usft)	+E/-W (usft)	Vertical Section (usft)	Dogleg Rate (°/100usft)	Build Rate (°/100usft)	Turn Rate (°/100usft)
8,146.38	0.00	0.00	8,105.00	591.27	299.47	662.78	0.00	0.00	0.00
Cameo Coals									
8,200.00	0.00	0.00	8,158.63	591.27	299.47	662.78	0.00	0.00	0.00
8,300.00	0.00	0.00	8,258.63	591.27	299.47	662.78	0.00	0.00	0.00
8,400.00	0.00	0.00	8,358.63	591.27	299.47	662.78	0.00	0.00	0.00
8,500.00	0.00	0.00	8,458.63	591.27	299.47	662.78	0.00	0.00	0.00
8,529.38	0.00	0.00	8,488.00	591.27	299.47	662.78	0.00	0.00	0.00
Rollins SS									
8,600.00	0.00	0.00	8,558.63	591.27	299.47	662.78	0.00	0.00	0.00
8,700.00	0.00	0.00	8,658.63	591.27	299.47	662.78	0.00	0.00	0.00
8,714.38	0.00	0.00	8,673.00	591.27	299.47	662.78	0.00	0.00	0.00
Cozzette									
8,800.00	0.00	0.00	8,758.63	591.27	299.47	662.78	0.00	0.00	0.00
8,900.00	0.00	0.00	8,858.63	591.27	299.47	662.78	0.00	0.00	0.00
8,935.38	0.00	0.00	8,894.00	591.27	299.47	662.78	0.00	0.00	0.00
Corcoran									
9,000.00	0.00	0.00	8,958.63	591.27	299.47	662.78	0.00	0.00	0.00
9,100.00	0.00	0.00	9,058.63	591.27	299.47	662.78	0.00	0.00	0.00
9,109.38	0.00	0.00	9,068.00	591.27	299.47	662.78	0.00	0.00	0.00
Sego									
9,200.00	0.00	0.00	9,158.63	591.27	299.47	662.78	0.00	0.00	0.00
9,300.00	0.00	0.00	9,258.63	591.27	299.47	662.78	0.00	0.00	0.00
9,400.00	0.00	0.00	9,358.63	591.27	299.47	662.78	0.00	0.00	0.00
9,409.38	0.00	0.00	9,368.00	591.27	299.47	662.78	0.00	0.00	0.00
TR 523-21-597 PBHL									

Design Targets									
Target Name	Dip Angle (°)	Dip Dir. (°)	TVD (usft)	+N/-S (usft)	+E/-W (usft)	Northing (usft)	Easting (usft)	Latitude	Longitude
- hit/miss target									
- Shape									
TR 523-21-597 MVRD	0.00	0.00	5,707.00	591.27	299.47	1,653,819.61	2,215,397.06	39.5955120	-108.2846760
- plan hits target center									
- Circle (radius 25.00)									
TR 523-21-597 PBHL	0.00	0.00	9,368.00	591.27	299.47	1,653,819.61	2,215,397.06	39.5955120	-108.2846760
- plan hits target center									
- Point									

Casing Points				
Measured Depth (usft)	Vertical Depth (usft)	Name	Casing Diameter (in)	Hole Diameter (in)
2,581.00	2,563.67	9 5/8" Surface Casing	9.62	13.50

Database:	Grand Junction District	Local Co-ordinate Reference:	Well TR 523-21-597 - Slot B2
Company:	Terra Energy Partners	TVD Reference:	GL 8292' & RKB 24' @ 8316.00usft (H&P 318)
Project:	Garfield County, CO NAD83	MD Reference:	GL 8292' & RKB 24' @ 8316.00usft (H&P 318)
Site:	TR 24-21-597 Pad	North Reference:	True
Well:	TR 523-21-597	Survey Calculation Method:	Minimum Curvature
Wellbore:	OH		
Design:	Plan #1 11Aug2016 jcsdi		

Formations					
Measured Depth (usft)	Vertical Depth (usft)	Name	Lithology	Dip (°)	Dip Direction (°)
2,331.27	2,316.00	Wasatch		0.00	0.00
4,146.21	4,116.00	Top "G" Sand		0.00	0.00
4,196.62	4,166.00	Base "G" Sand		0.00	0.00
4,323.67	4,292.00	Fort Union		0.00	0.00
5,648.35	5,607.00	Ohio Creek		0.00	0.00
5,748.37	5,707.00	Mesaverde		0.00	0.00
6,547.38	6,506.00	Top Gas		0.00	0.00
8,146.38	8,105.00	Cameo Coals		0.00	0.00
8,529.38	8,488.00	Rollins SS		0.00	0.00
8,714.38	8,673.00	Cozzette		0.00	0.00
8,935.38	8,894.00	Corcoran		0.00	0.00
9,109.38	9,068.00	Sego		0.00	0.00