



Photo#1: Overview of Location from Entry to SE; APDs were not Drilled.

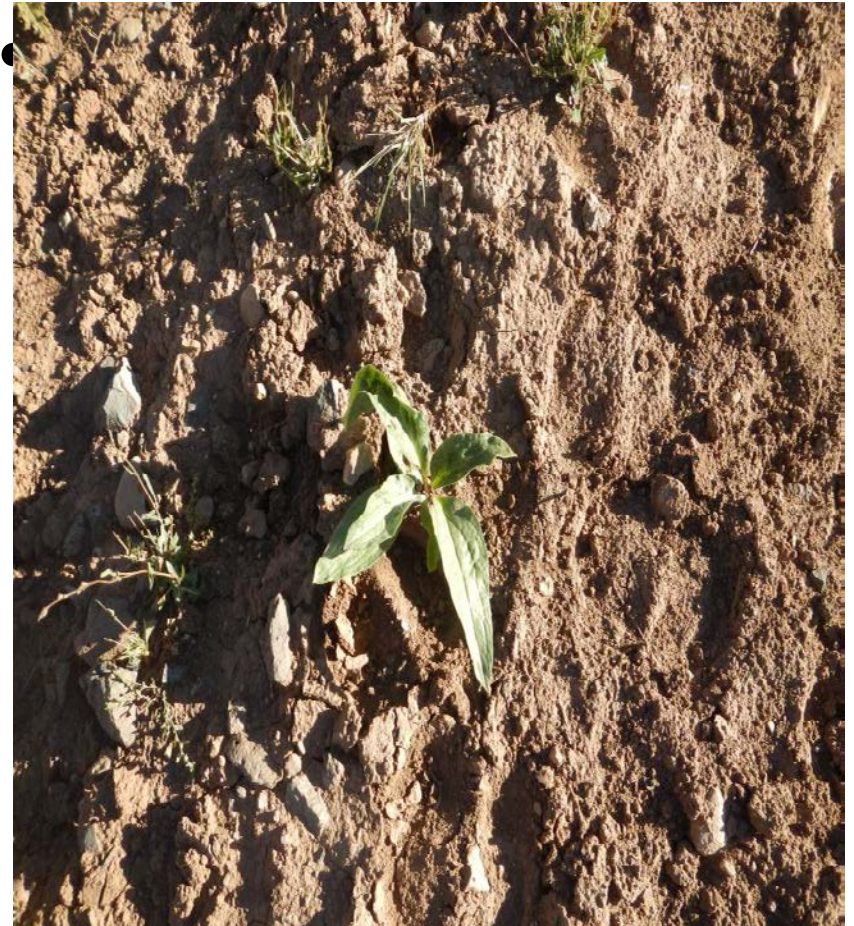


Photo#2: Rocked Drain leading from access Road; neighboring Vega Reservoir in background

September 5, 2016

Inspection Photos: Laramie Vega Loc#334439 & ALs

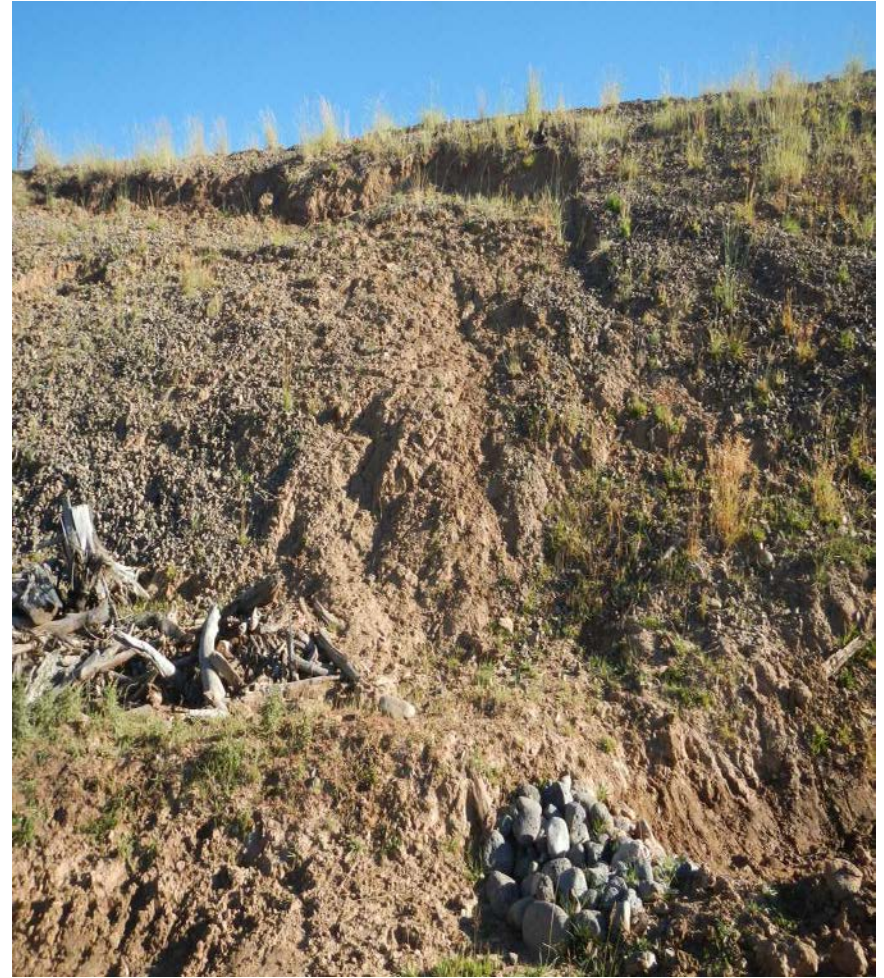
Photos 3 & 4: Canada Thistle and Houndstongue noted on Location.



September 5, 2016

Inspection Photos: Laramie Vega Loc#334439 & ALs

Photos 5 & 6: Erosion of Fill Slope on NW side of Location



September 5, 2016

Inspection Photos: Laramie Vega Loc#334439 & ALs