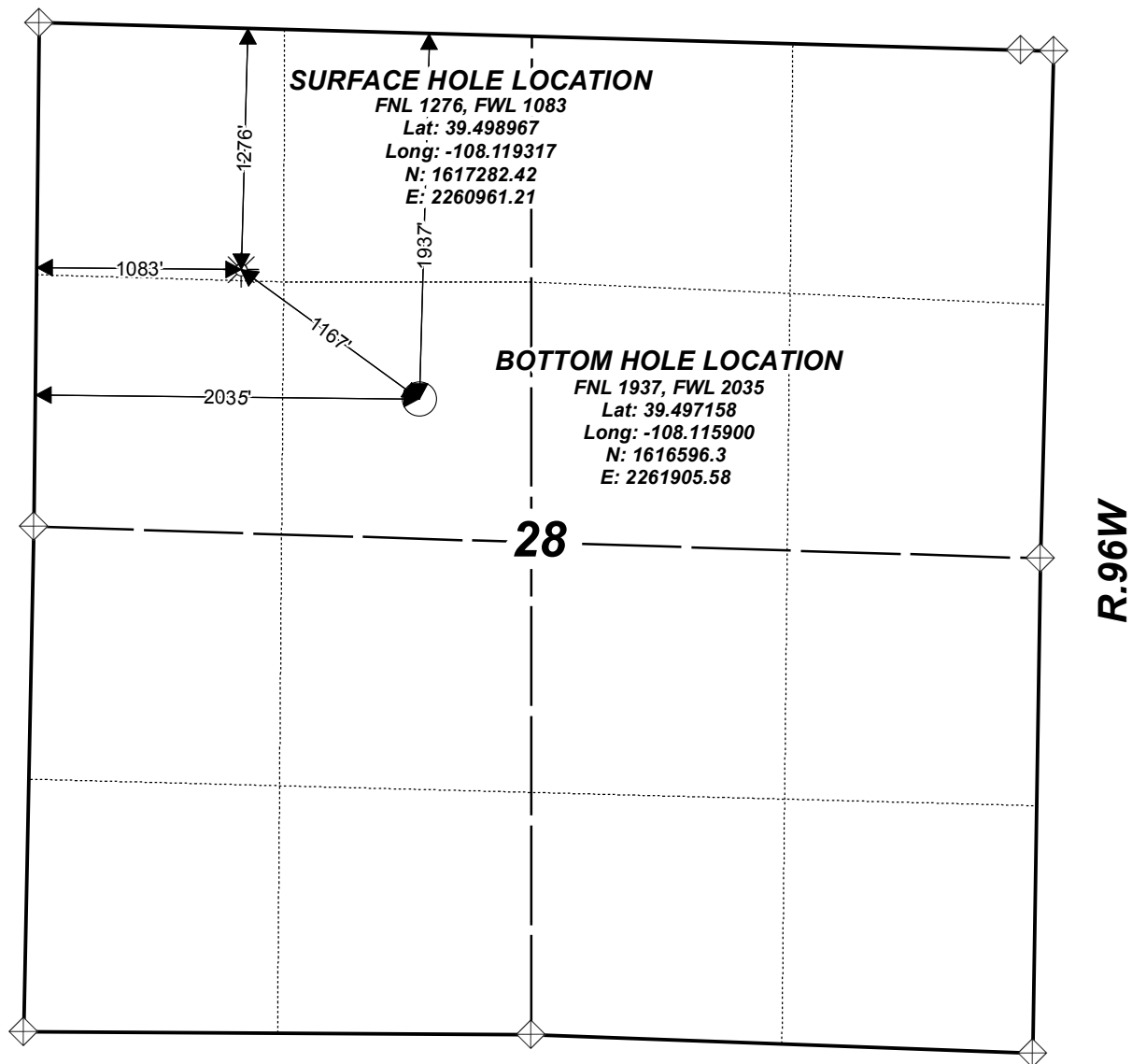





Puckett GM 422-28

T.6S.



0 500 1,000
Feet
1 in. = 950 ft.

Legend

-  Section Monument
-  Surface Hole Location
-  Bottom Hole Location



Map Date: 9/15/2016

Scale: 1" = 950'

Page 1 of 1

Well Location Plat

TEP Rocky Mountain LLC

NW1/4 NW1/4, SECTION 28,
T.6S., R.96W, of the 6th. P.M.
GARFIELD COUNTY, COLORADO