

T5N, R90W, 6th P.M.

GRMR Oil & Gas, LLC

1914 Brass Cap  
LATITUDE: 40°21'49.61"  
LONGITUDE: 107°31'43.05"

N00°31'51"W - 2745.92' (Meas.)

Lot 5

Lot 12

30

1914 Brass Cap  
LATITUDE: 40°21'22.48"  
LONGITUDE: 107°31'42.72"

Lot 13

29

WELL LOCATION:  
BERT FEDERAL 29-13

ELEV. UNGRADED GROUND = 6915.6'

Lot 1

Top of  
Producing  
Interval

Top of  
Hole

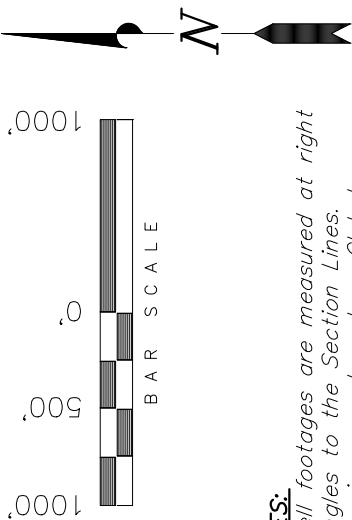
Lot 2

1914 Brass Cap  
LATITUDE: 40°20'55.72"  
LONGITUDE: 107°31'07.78"

S89°33'04"W - 2676.30' (Meas.)

1914 Brass Cap  
LATITUDE: 40°20'55.51"  
LONGITUDE: 107°31'42.33"

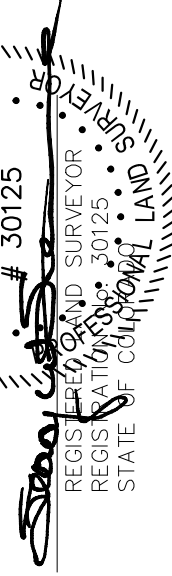
3933.41'  
N86°00'42"W  
4485.16'  
Meas. to  
Bottom Hole



NOTES:

1. Well footages are measured at right angles to the Section Lines.
2. Bearings are based on Global Positioning Satellite Observations.
3. G.P.S. Operator: D. PETTY., (PDOP) = 1.4

THIS IS TO CERTIFY THAT THE ABOVE PLAT WAS PREPARED FROM FIELD NOTES OF REAL SURVEYS MADE BY ME OR UNDER MY SUPERVISION. THE LOCATION HAS BEEN STATIONED ON THE CORNERS AS SHOWN ON THE PLAT, AND THAT THE SAME ARE TRUE AND CORRECT TO THE BEST OF MY KNOWLEDGE AND BELIEF. 05-31-16 # 30125



TRI STATE LAND SURVEYING & CONSULTING

180 NORTH VERNAL AVE. - VERNAL, UTAH 84078  
(435) 781-2501

DATE SURVEYED: 02-18-16	SURVEYED BY: D.P.
DATE DRAWN: 02-19-16	DRAWN BY: F.T.M.
REVISED: 05-31-16 F.T.M.	SCALE: 1" = 1000'

◆ = SECTION CORNERS LOCATED

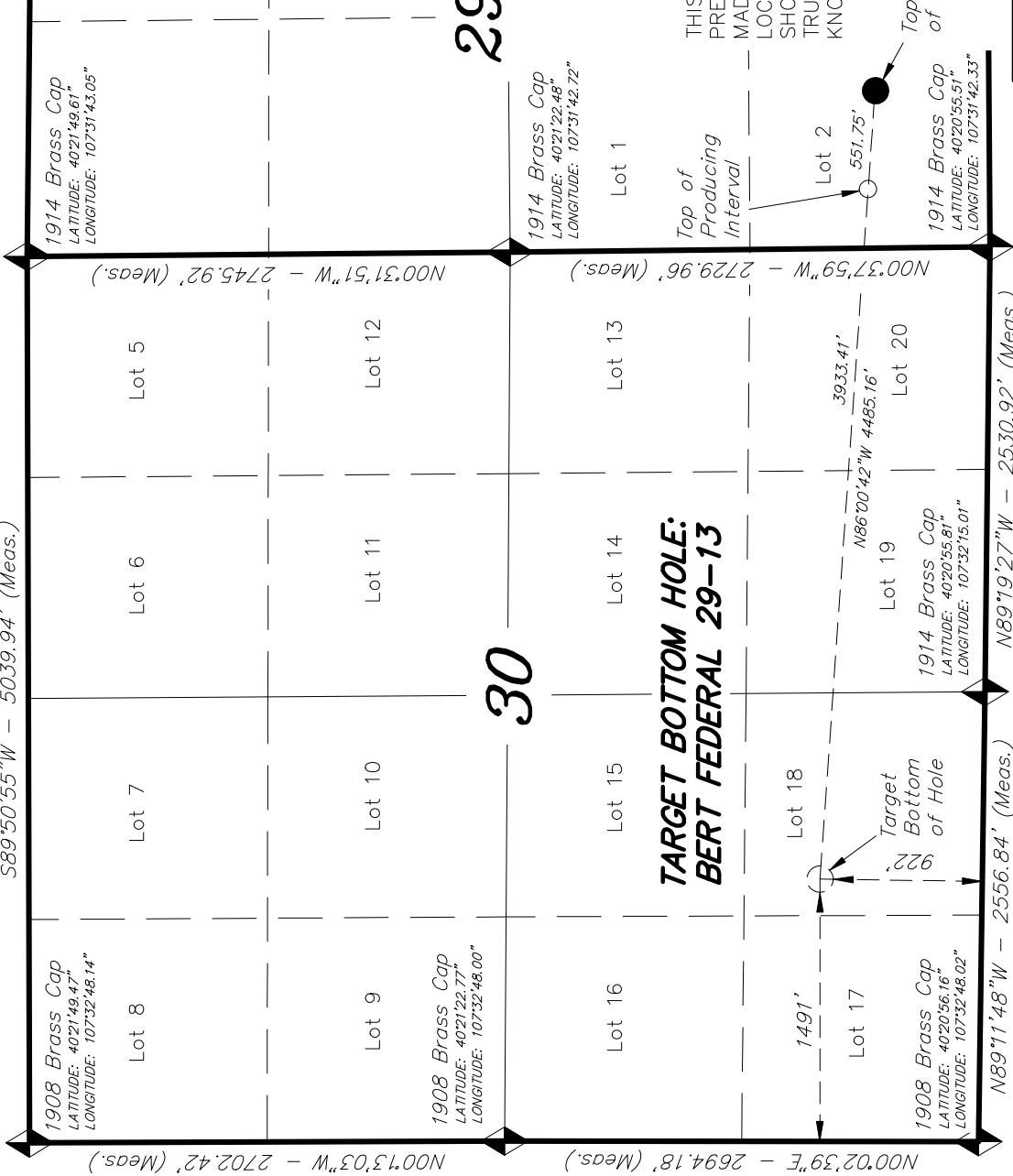
BASIS OF ELEV; Elevations are based on an N.G.S. OPUS Correction. LOCATION: LAT. 40°20'35.28" LONG. 107°31'32.83" (Tristate Aluminum Cap) Elev. 6627'

NAD 83 (SURFACE LOCATION)	
LATITUDE = 40°21'01.99"	(40.350551°)
LONGITUDE = 107°31'30.99"	(107.525274°)
NAD 83 (TOP OF PROD. INTERVAL)	
LATITUDE = 40°21'02.36"	(40.350657°)
LONGITUDE = 107°31'38.09"	(107.527248°)

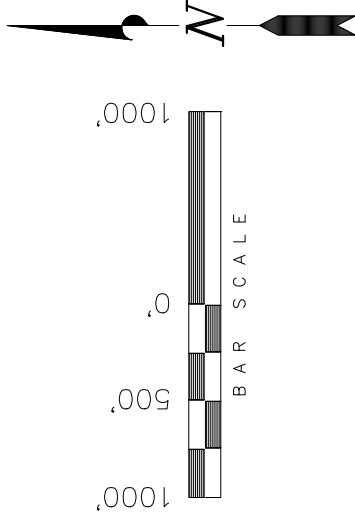
T5N, R90W, 6th P.M.

GRMR Oil & Gas, LLC

S89°50'55"W - 5039.94' (Meas.)



TARGET BOTTOM HOLE, BERT  
FEDERAL 29-13, LOCATED AS  
SHOWN IN LOT 18 (SE 1/4 SW 1/4)  
OF SECTION 30, T5N, R90W, 6th  
P.M. MOFFAT COUNTY, COLORADO.



NOTES:

1. Well footages are measured at right angles to the Section Lines.
2. Bearings are based on Global Positioning Satellite Observations.

TARGET BOTTOM HOLE:  
BERT FEDERAL 29-13

THIS IS TO CERTIFY THAT THE ABOVE PLAT WAS  
PREPARED FROM FIELD NOTES OF REGULAR SURVEYS  
MADE BY ME OR UNDER MY SUPERVISION. THE  
LOCATION HAS BEEN STAKED ON THE GROUND AS  
SHOWN ON THE PLAT AND THAT THE SAME ARE  
TRUE AND CORRECT TO THE BEST OF MY  
KNOWLEDGE AND BELIEF. 05-31-16  
# 30125

REGISTERED LAND SURVEYOR  
REGISTRATION NO. 30125  
STATE OF COLORADO  
LAND SURVEYOR

◆ = SECTION CORNERS LOCATED

BASIS OF ELEV.; Elevations are based on  
an N.G.S. OPUS Correction. LOCATION:  
LAT. 40°20'35.28" LONG. 107°31'32.83"  
(Tristate Aluminum Cap) Elev. 6627'

NAD 83 (TARGET BOTTOM HOLE LOCATION)  
LATITUDE = 40°21'05.06" (40.351406°)  
LONGITUDE = 107°32'28.76" (107.541322°)

TRI STATE LAND SURVEYING & CONSULTING  
180 NORTH VERNAL AVE. - VERNAL, UTAH 84078  
(435) 781-2501

DATE SURVEYED: 02-18-16	SURVEYED BY: D.P.
DATE DRAWN: 02-19-16	DRAWN BY: F.T.M.
REVISED: 05-31-16 F.T.M.	SCALE: 1" = 1000'