

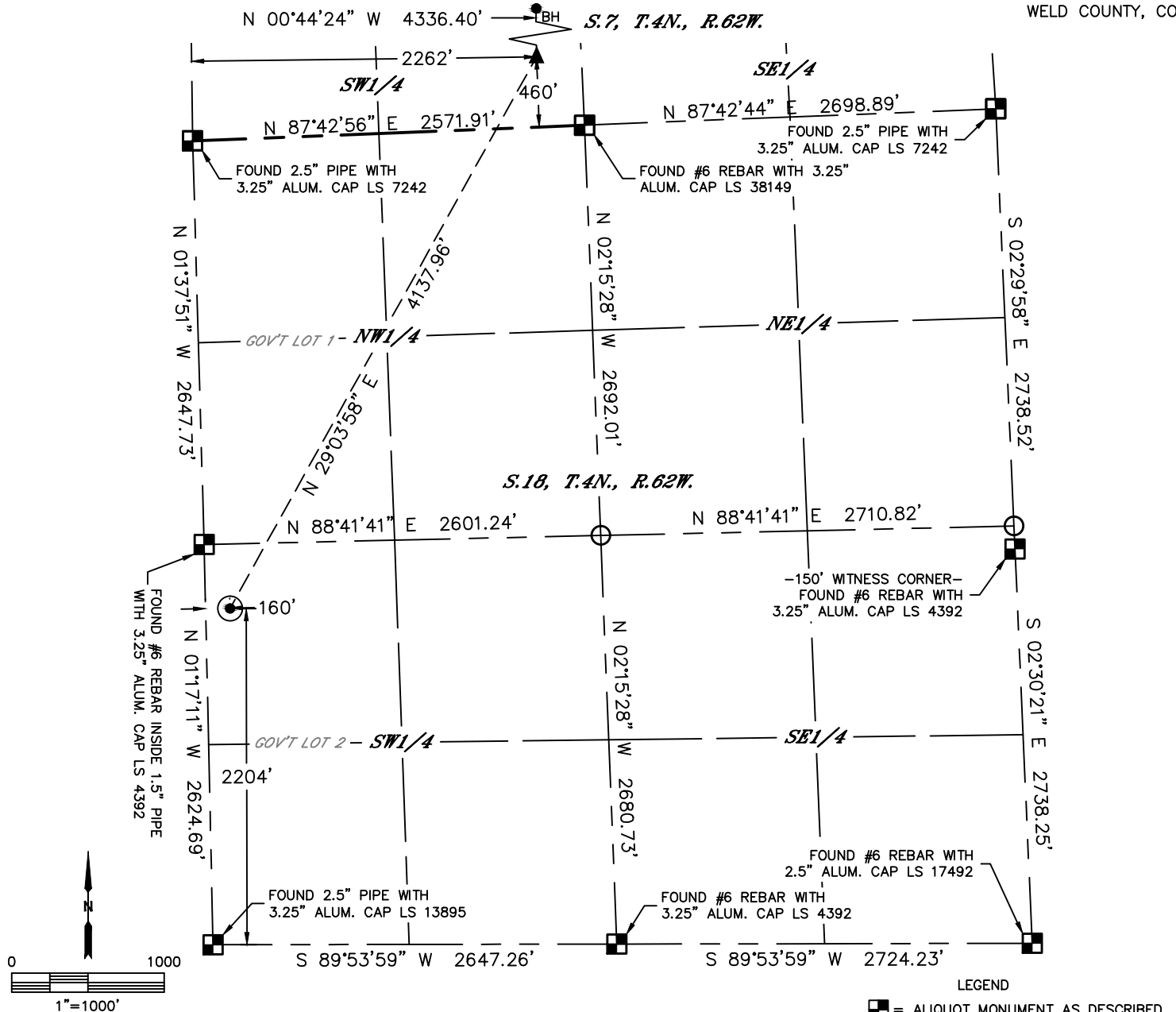


Lat40°, Inc. 6250 W. 10th Street, Unit 2, Greeley, CO 970-515-5294

# WELL LOCATION CERTIFICATE

FLAHERTY 18-7-10NBH

SECTION: 18  
TOWNSHIP: 4N  
RANGE: 62W  
6TH. P.M.  
WELD COUNTY, CO



CLIENT: EDGE ENERGY				LANDMAN: ERIK LARSEN			
INSTRUMENT OPERATOR: BRIAN ROTTINGHAUS				SURVEY DATE: 9/14/2016		SURFACE USE: RANGELAND	
SHL FOOTAGE	SHL LAT °	SHL LONG °	SHL PDOP	SHL ELEV (FT.)	SHL 1/4/1/4	SHL S-T-R	
2204 FSL 160 FWL	40.31127	-104.37604	1.1	4549	NWSW	18-4-62	

BHL FOOTAGE	BHL LAT °	BHL LONG °	BHL S-T-R	EP LAT °	EP LONG °	EP S-T-R
460 FNL 2262 FWL	40.33303	-104.36867	7-4-62	40.32113	-104.36867	7-4-62

NOTE:

- 1) Bearings shown are Grid Bearings of the Colorado State Plane Coordinate System, North Zone, North American Datum 1983. The lineal dimensions as contained herein are based upon the "U.S. Survey Foot."
- 2) Distances to section lines measured at 90 degrees from said section lines.
- 3) Ground elevations are based on an observed GPS elevation (NAVD 1988 DATUM).
- 4) Latitude and Longitude shown are (NAD 83 DATUM).
- 5) IMPROVEMENTS: See LOCATION DRAWING for all visible improvements within 500' of oil and gas location.
- 6) This map does not represent a boundary survey.

NEAREST CULTURAL ITEMS	
BUILDING	±1144' NW
BUILDING UNIT	±1776' NW
HIGH OCCUPANCY BUILDING UNIT	5280'+
DESIGNATED OUTSIDE ACTIVITY AREA	5280'+
PUBLIC ROAD (HIGHWAY 34)	±431' SW
ABOVE GROUND UTILITY	±403' SW
RAILROAD	5280'+
PROPERTY LINE	±160' W

- LEGEND
- = ALIQUOT MONUMENT AS DESCRIBED
  - = CALCULATED POSITION
  - = SURFACE HOLE LOCATION (SHL)
  - ▲ = ENTRY POINT LOCATION (EP)
  - BH = BOTTOM HOLE LOCATION (BHL)
  - ⊕ = EXISTING WELL
  - ⊙ = ABANDONED WELL



SHEET 1 OF 2

Kyle E. Rutz-On behalf of Lat40°, Inc.  
Colorado Licensed Professional Land Surveyor No. 38307  
DATE: 9/14/2016  
PROJECT#: 2015129

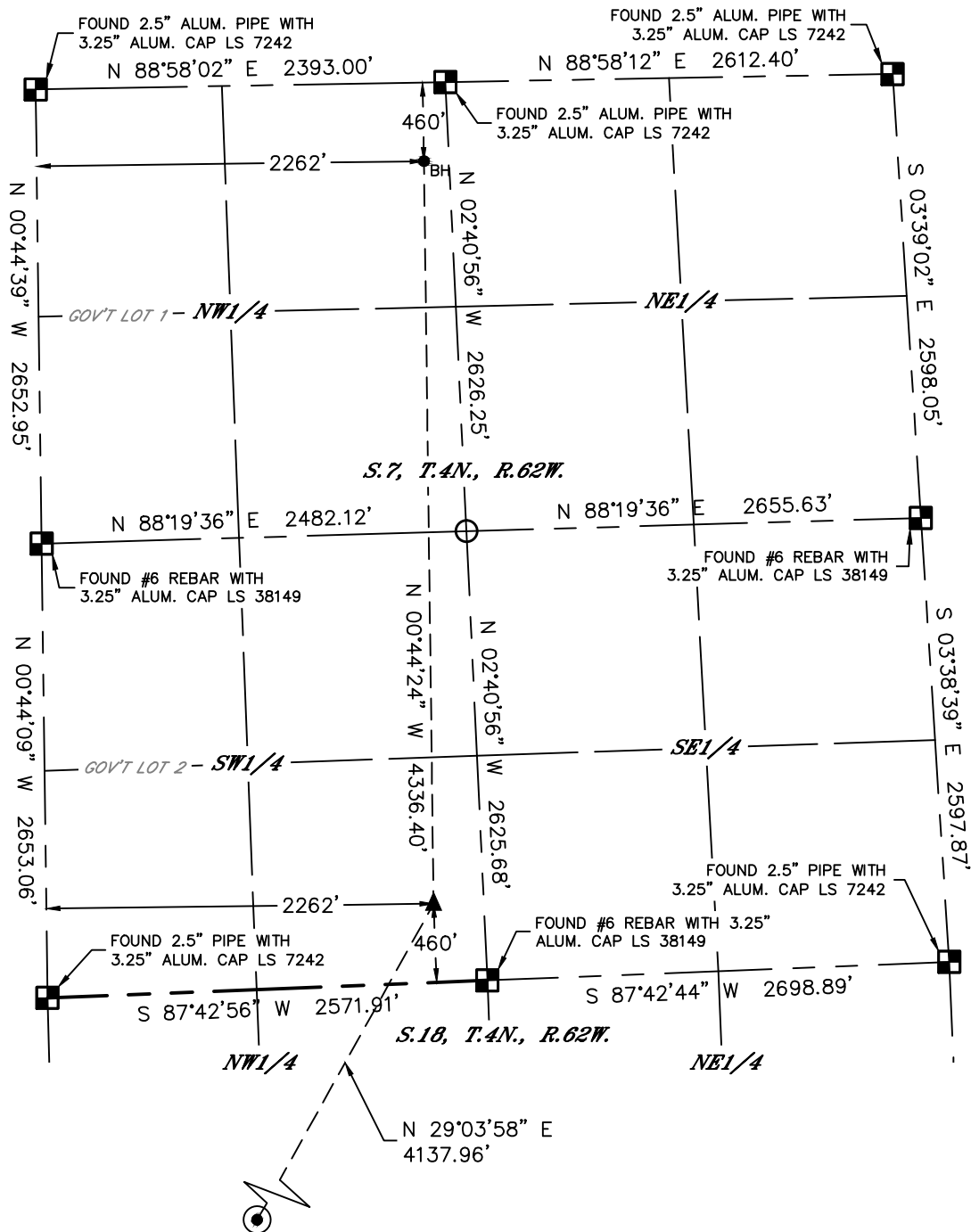


Lat40°, Inc. 6250 W. 10th Street, Unit 2, Greeley, CO 970-515-5294

# WELL LOCATION CERTIFICATE

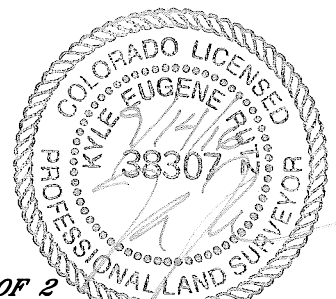
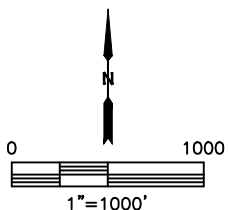
FLAHERTY 18-7-10NBH

SECTION: 18  
TOWNSHIP: 4N  
RANGE: 62W  
6TH. P.M.  
WELD COUNTY, CO



## LEGEND

- = ALIQUOT MONUMENT AS DESCRIBED
- = CALCULATED POSITION
- ⊙ = SURFACE HOLE LOCATION (SHL)
- ▲ = ENTRY POINT LOCATION (EP)
- = BOTTOM HOLE LOCATION (BHL)
- ⊕ = EXISTING WELL
- ⊖ = ABANDONED WELL



**SHEET 2 OF 2**

Kyle E. Rutz—On behalf of Lat40°, Inc.  
Colorado Licensed Professional Land Surveyor No. 38307  
DATE: 9/14/2016  
PROJECT#: 2015129