

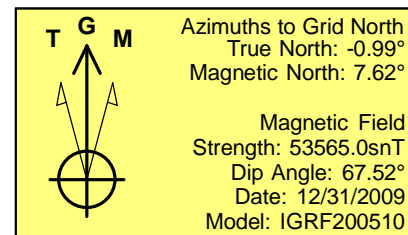
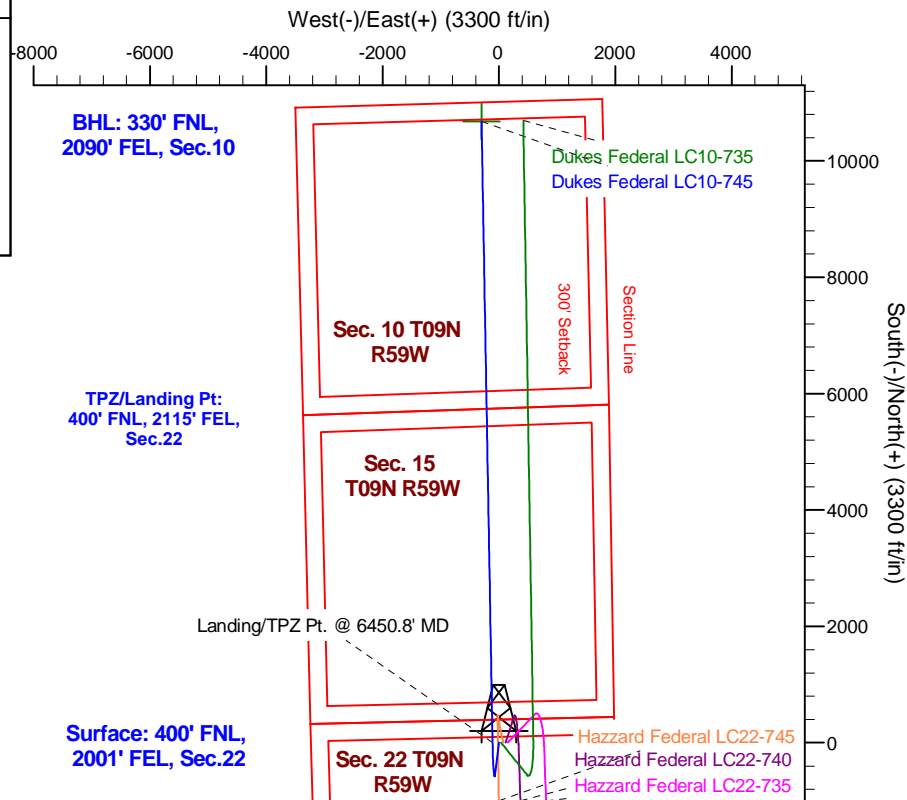
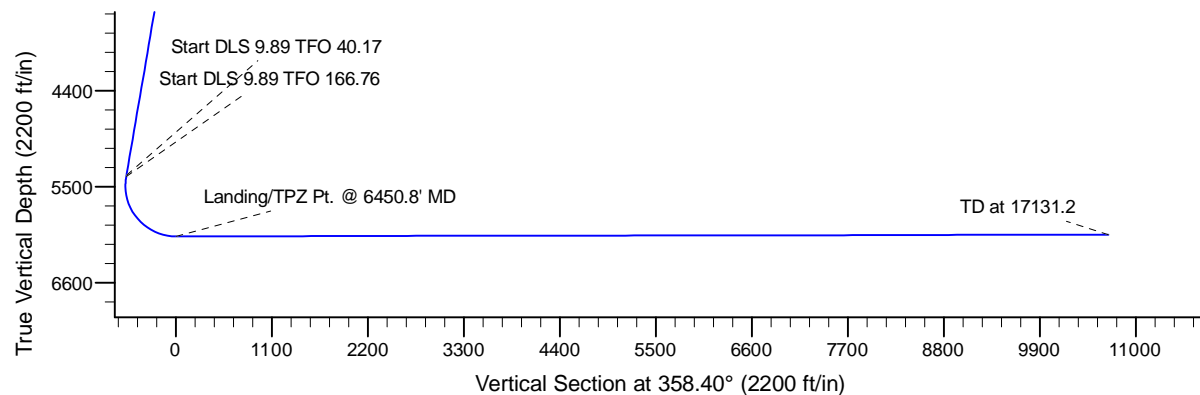
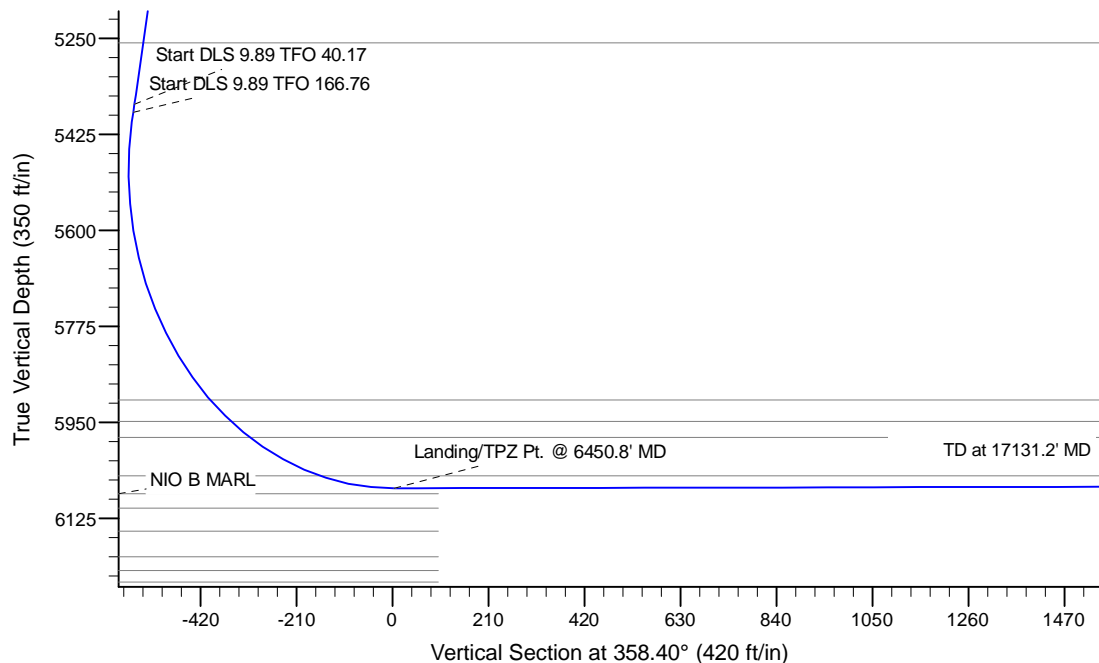
Project: Wattenberg Field  
 Site: LC (Sec.12-T09N-R59W) Weld County, CO  
 Well: Dukes Federal LC10-745  
 Wellbore: Original Drilling  
 Design: APD - Rev 1

# Northern Region Drilling - Working

Geodetic System: US State Plane 1983  
 Datum: North American Datum 1983  
 Ellipsoid: GRS 1980  
 Zone: Colorado Northern Zone  
 System Datum: Mean Sea Level

## SECTION DETAILS

Sec	MD	Inc	Azi	TVD	+N/-S	+E/-W	Dleg	TFace	VSec	Target
1	0.0	0.00	0.00	0.0	0.0	0.0	0.00	0.00	0.0	
2	1800.0	0.00	0.00	1800.0	0.0	0.0	0.00	0.00	0.0	
3	2287.5	9.75	187.00	2285.2	-41.1	-5.0	2.00	187.00	-40.9	
4	5417.6	9.75	187.00	5370.0	-567.2	-69.6	0.00	0.00	-565.0	
5	5432.3	10.91	191.98	5384.5	-569.8	-70.1	9.89	40.17	-567.6	
6	6450.8	90.10	358.98	6070.0	0.0	-110.0	9.89	166.76	3.1	
7	17131.2	90.10	358.99	6050.9	10678.8	-298.8	0.00	70.73	10682.9	Dukes Federal LC10-745 BHL 330'FNL, 2090'FEL



## WELL DETAILS: Dukes Federal LC10-745

Ground Level	North	East	Lat	Long
894.0	1516985.92	3426161.44	40.742370	-103.962010

Plan: APD - Rev 1 (Dukes Federal LC10-745/Original Drilling)

Created By: Shailey Jewell Date: 7:54, September 09 2016

Checked: \_\_\_\_\_ Date: \_\_\_\_\_

Reviewed: \_\_\_\_\_ Date: \_\_\_\_\_

Approved: \_\_\_\_\_ Date: \_\_\_\_\_