

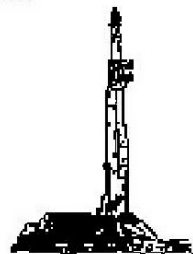
GOOLSBY BROTHERS
and associates, inc.

575 Union Blvd, Suite 208
Lakewood, CO 80228
303-945-2860 Office



Geological Wellsite
Supervision

www.goolsbybrothers.com



Scale 1:240 (5"=100') Imperial
Measured Depth Log

Well Name: SRC VISTA 44-2N-A

API: 05-123-41055

Location: Section 2, T4N, R68W, Weld County, CO.

License Number:

Spud Date: November 07, 2015

Surface Coordinates: NWSW Sec 2 T4N R68W; 2083' FSL 254' FWL

Lat 40.341228 Long -104.978904

Bottom Hole Coordinates: SESE Sec 2 T4N R68W; N-S: -1061.2'; E-W: 4580.2'

Ground Elevation (ft): 5000'

Logged Interval (ft): 6900'

To: 11550'

Formation: Pierre Shales/Sands, Niobrara "A" Chalk Target

Type of Drilling Fluid: LSND

K.B. Elevation (ft): 5013'

Total Depth (ft): 11550' DMTD

Region: Wattenberg

Drilling Completed: December 04, 2015

Printed by HORIZONTAL.LOG from WellSight Systems 1-800-447-1534 www.WellSight.com

OPERATOR

Company: Synergy Resources Corporation

Address: 20203 Highway 60
Platteville, CO 80651

GEOLOGIST

Name: Ryan Scribner

Company: Goolsby Brothers & Assoc. (GBA), Inc. (www.goolsbybrothers.com)

Address: 575 Union Blvd.
Suite 208,
Lakewood CO. 80228

E-logs

MWD GR from 701'-11501'

Casing

9 5/8" Surface Casing set @ 651' MD'


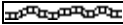
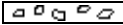


7" Intermediate Casing set @ 7410' MD






4 1/2" Production Liner hung 12/06/2015, landed @ 11543'






Comments






- 1) Drilling Contractor: Ensign US Drilling, Rig #131
Toolpusher: Samuel Mikesell
Daniel Batchlor
- 2) Company Man: Sean Devereaux
Kevin Brakovec
- 3) Mud Comapny : Halliburton Baroid 41
Engineer: Cory Armstrong
- 4) Directional Drilling: Scientific Drilling
Drillers: Derek Daugherty, Jeff Cavazos
MWD: Calvin Collins, Chris Jaques
- 5) Gas Equipment: Pason Gas Analyzer (Spectrometer)
- 6) Wellsite Geologist: Ryan Scribner

ROCK TYPES

 Anhy
 Bent
 Brec
 Cht
 Clyst

 Coal
 Oil sat.
 Congl
 Dol
 Gyp

 Lmst
 Mrlst
 Salt
 Shale
 Shcol

 Shgy
 Ss
 Sltst
 Ss
 Chalk

 Carb sh
 Sltty sh

ACCESSORIES

MINERAL

Anhy
 Arggrn
 Arg
 Bent
 Bit
 Brecfrag
 Calc
 Carb
 Chtdk
 Chtlt
 Dol
 Feldspar
 Ferrpel
 Ferr
 Glau

Gyp
 Hvymin
 Kaol
 Marl
 Minxl
 Nodule
 Phos
 Pyr
 Salt
 Sandy
 Silt
 Sil
 Sulphur
 Tuff

FOSSIL

Algae
 Amph
 Belm
 Bioclst
 Brach
 Bryozoa
 Cephal
 Coral
 Crin
 Echin
 Fish
 Foram
 Fossil
 Gastro
 Oolite

Ostra
 Pelec
 Pellet
 Pisolite
 Plant
 Strom

STRINGER

Chlkstg
 Anhy
 Arg
 Bent
 Coal
 Dol
 Gyp
 Ls

Mrst
 Sltstgr
 Ssstgr

TEXTURE

Boundst
 Chalky
 Cryxln
 Earthy
 Finexln
 Grainst
 Lithogr
 Microxln
 Mudst
 Packst
 Wackest

OTHER SYMBOLS

OIL SHOWS

Even
 Spotted
 Ques
 Dead
 Vspotty

near even

POROSITY TYPE

Earthy
 Fenest
 Fracture

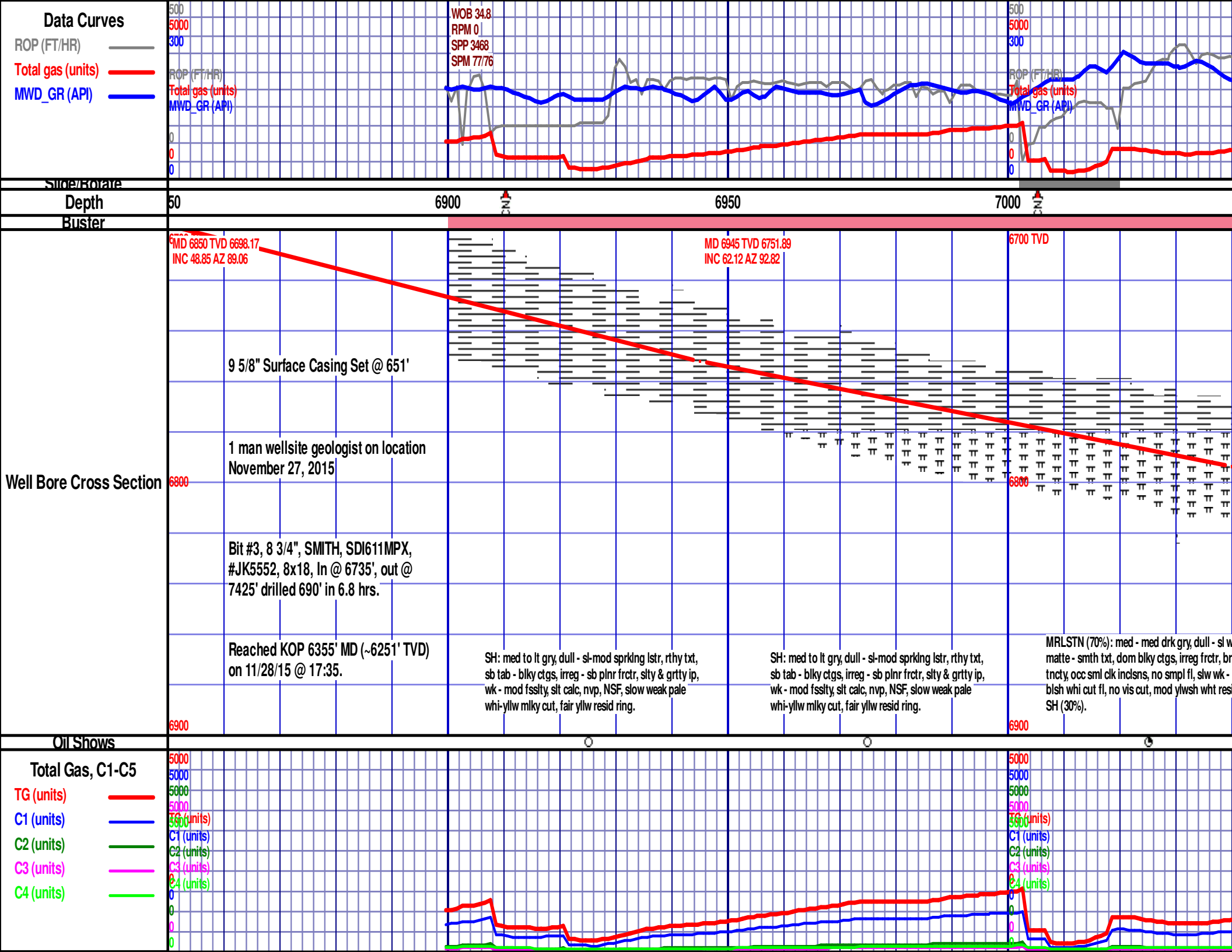
Inter
 Moldic
 Organic
 Pinpoint
 Vuggy

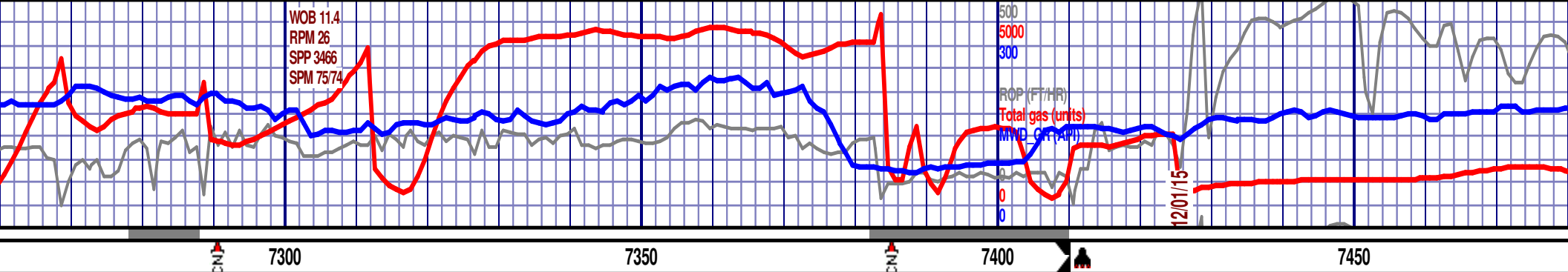
ROUNDING

Rounded
 Subrnd
 Subang
 Angular

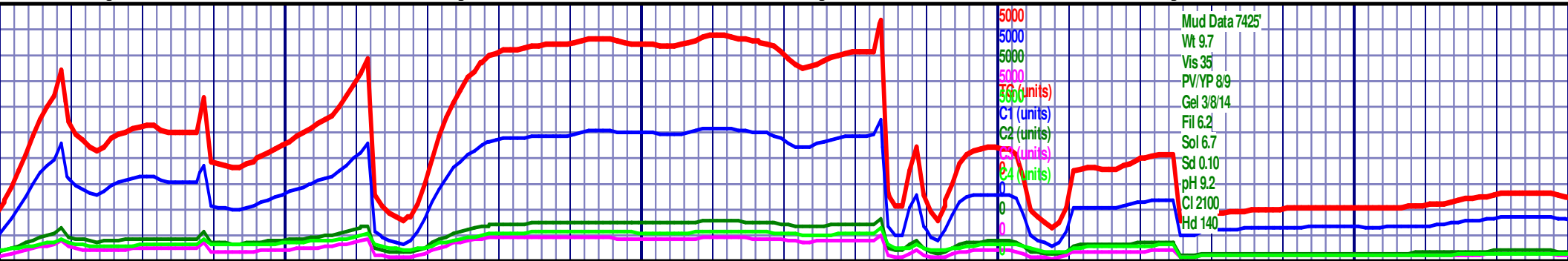
SORTING

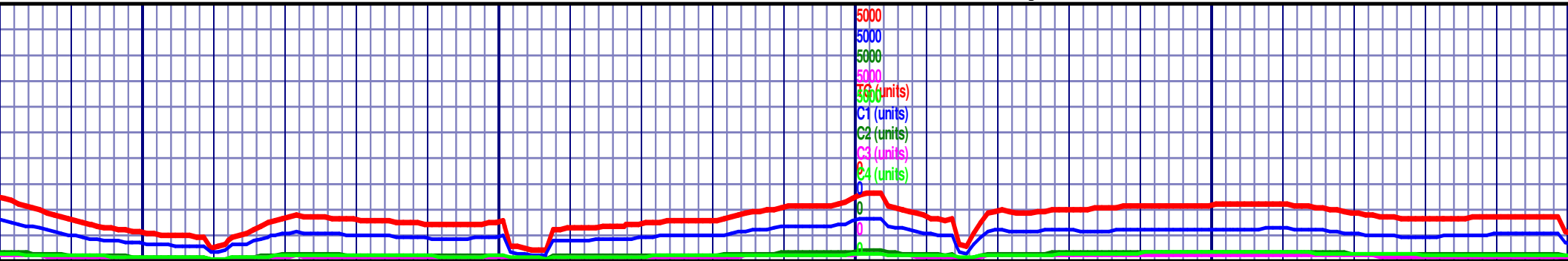
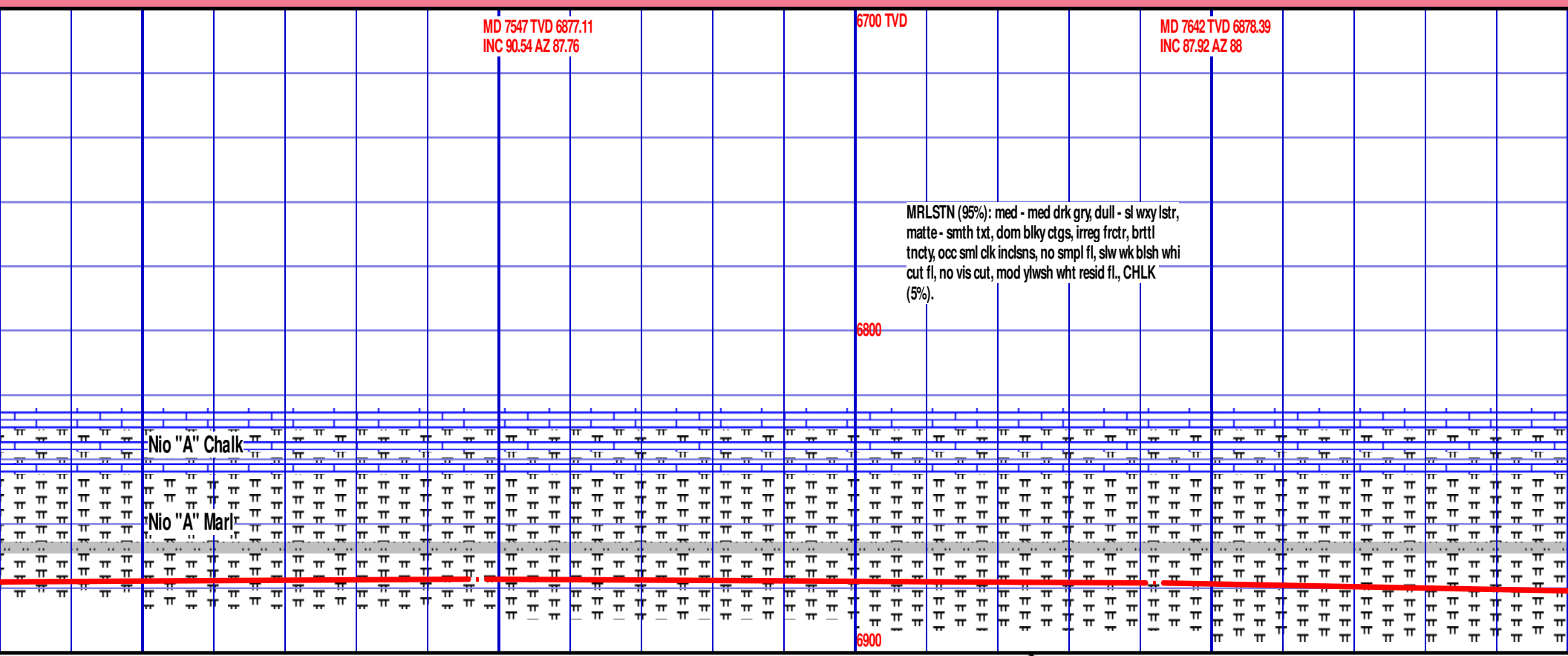
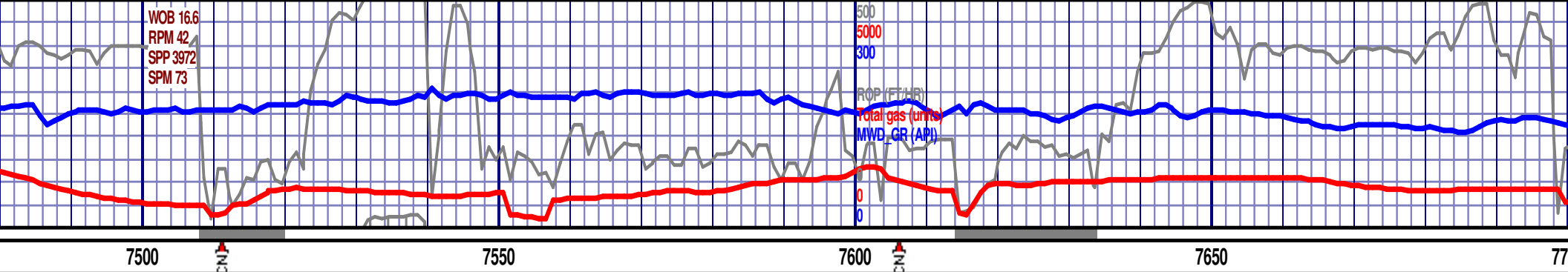
Well
 Moderate
 Poor



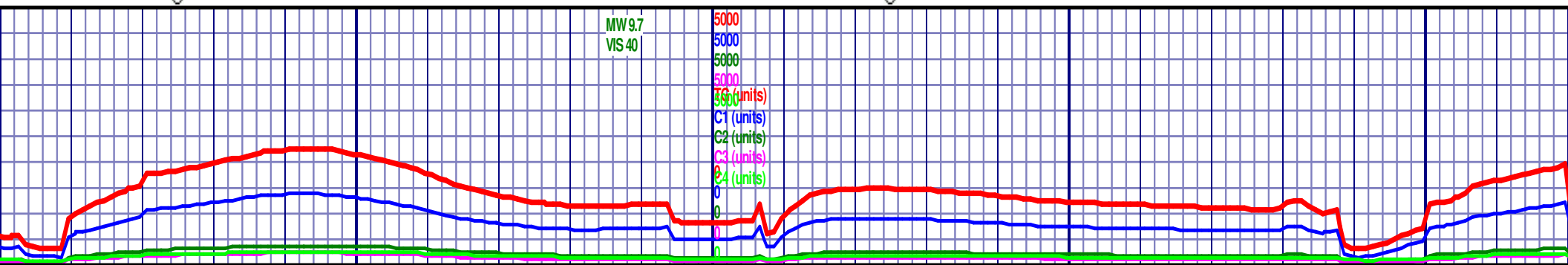


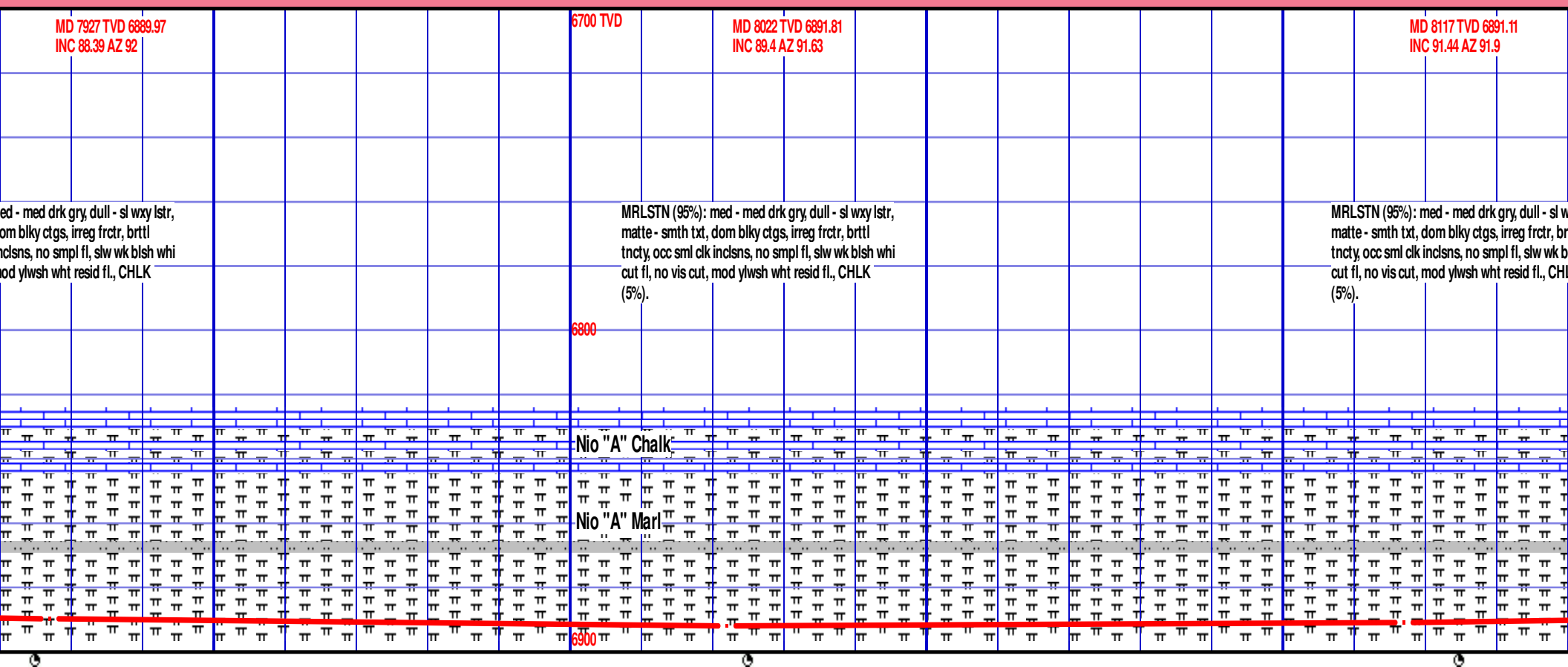
<p>STN (70%): med - med drk gry, dull - sl wxy lstr, e - smth txt, dom blk y ctgs, irreg frctr, brttl tncy, occ sml clk inclns, no smpl fl, slw wk blsh whi cut fl, no vis cut, mod ylwsh wht resid fl, CHLK (25%).</p>	<p>MD 7325 TVD 6869.25 INC 83.16 AZ 87.04</p> <p>MRLSTN (75%): med - med drk gry, dull - sl wxy lstr, matte - smth txt, dom blk y ctgs, irreg frctr, brttl tncy, occ sml clk inclns, no smpl fl, slw wk blsh whi cut fl, no vis cut, mod ylwsh wht resid fl, CHLK (25%).</p>	<p>MD 7365 TVD 6873.9 INC 83.64 AZ 86.48</p> <p>MRLSTN (80%): med - med drk gry, dull - sl wxy lstr, matte - smth txt, dom blk y ctgs, irreg frctr, brttl tncy, occ sml clk inclns, no smpl fl, slw wk blsh whi cut fl, no vis cut, mod ylwsh wht resid fl, CHLK (20%).</p>	<p>6700 TVD</p>	<p>MD 7425 TVD 6877.5 INC 89.49 AZ 89.37</p> <p>Reached ICPL @ 7425' 06:34 hrs 11/30/2015. pmp high vis swps, condition hole, Run 7" csg to 7410' MD, Bit #4, 6 1/8", REED, SKH1519S-A1, #A211905, 5x18, In @ 7425', out @ 10236' drilled 2811' in 17.3 hrs.</p> <p>MRLSTN (85%): med - med drk gry, dull - sl wxy lstr, matte - smth txt, dom blk y ctgs, irreg frctr, brttl tncy, occ sml clk inclns, no smpl fl, slw wk blsh whi cut fl, no vis cut, mod ylwsh wht resid fl, CHLK (15%).</p>	<p>MD 7452 TVD 6878.14 INC 90.71 AZ 86.44</p>
---	--	---	-----------------	---	---

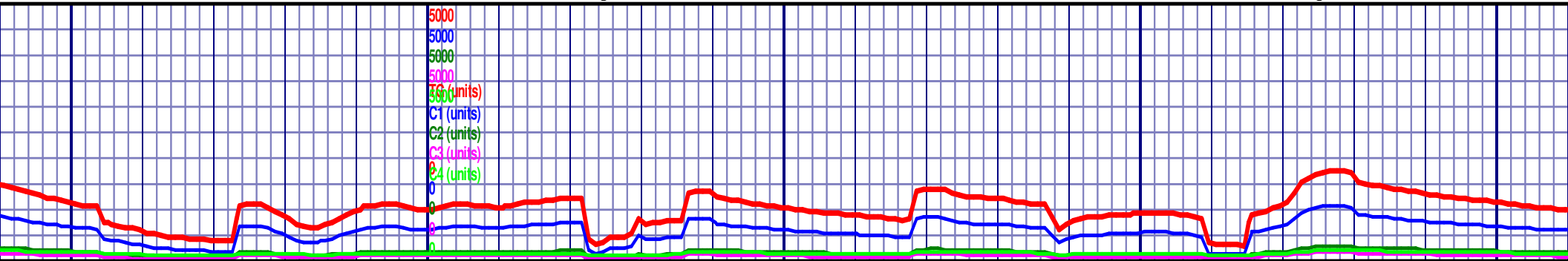
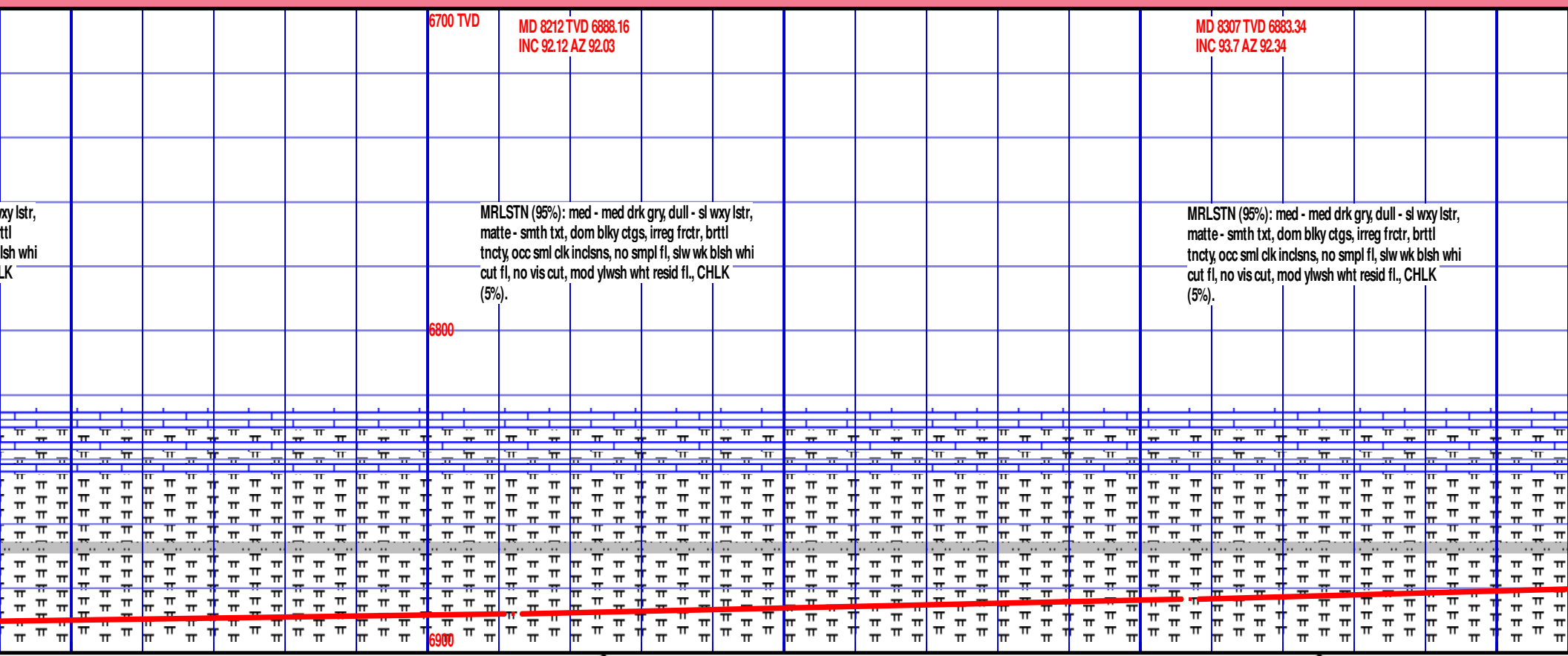
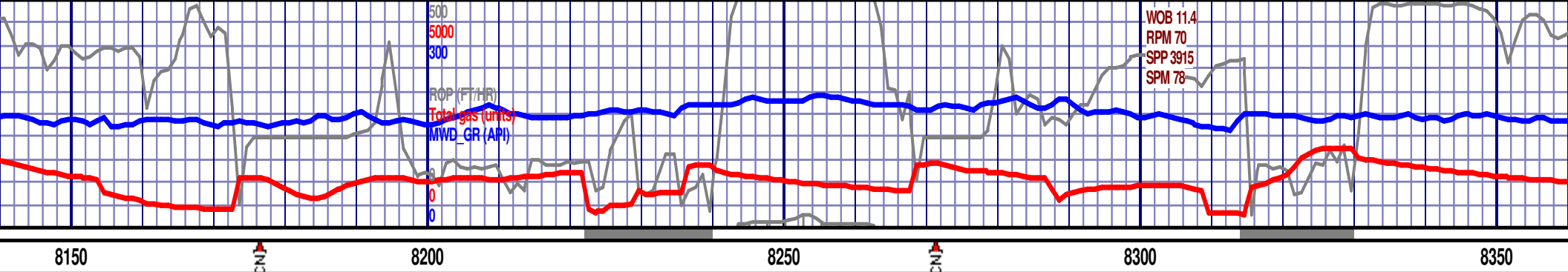


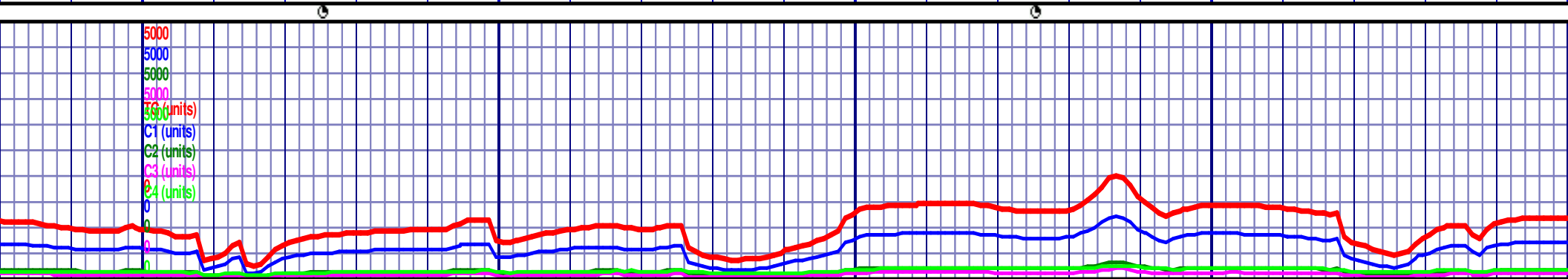
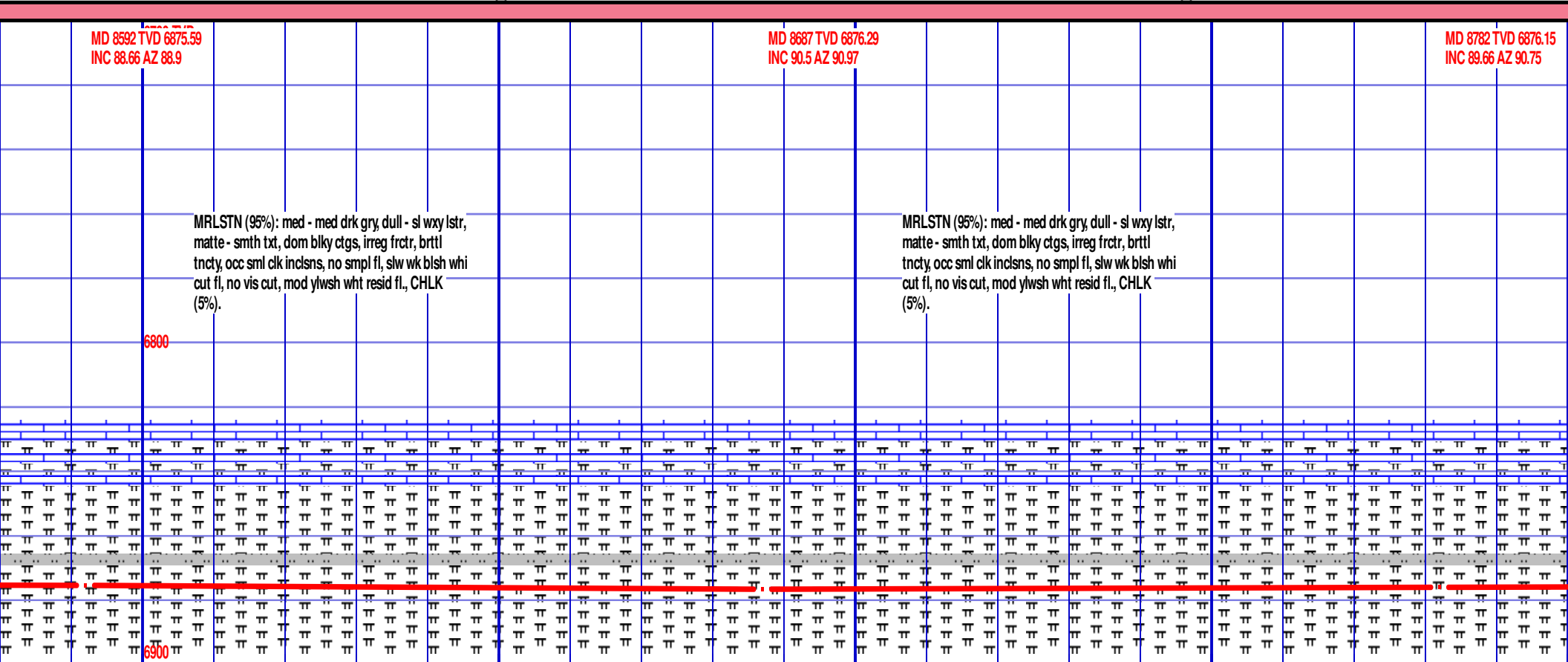


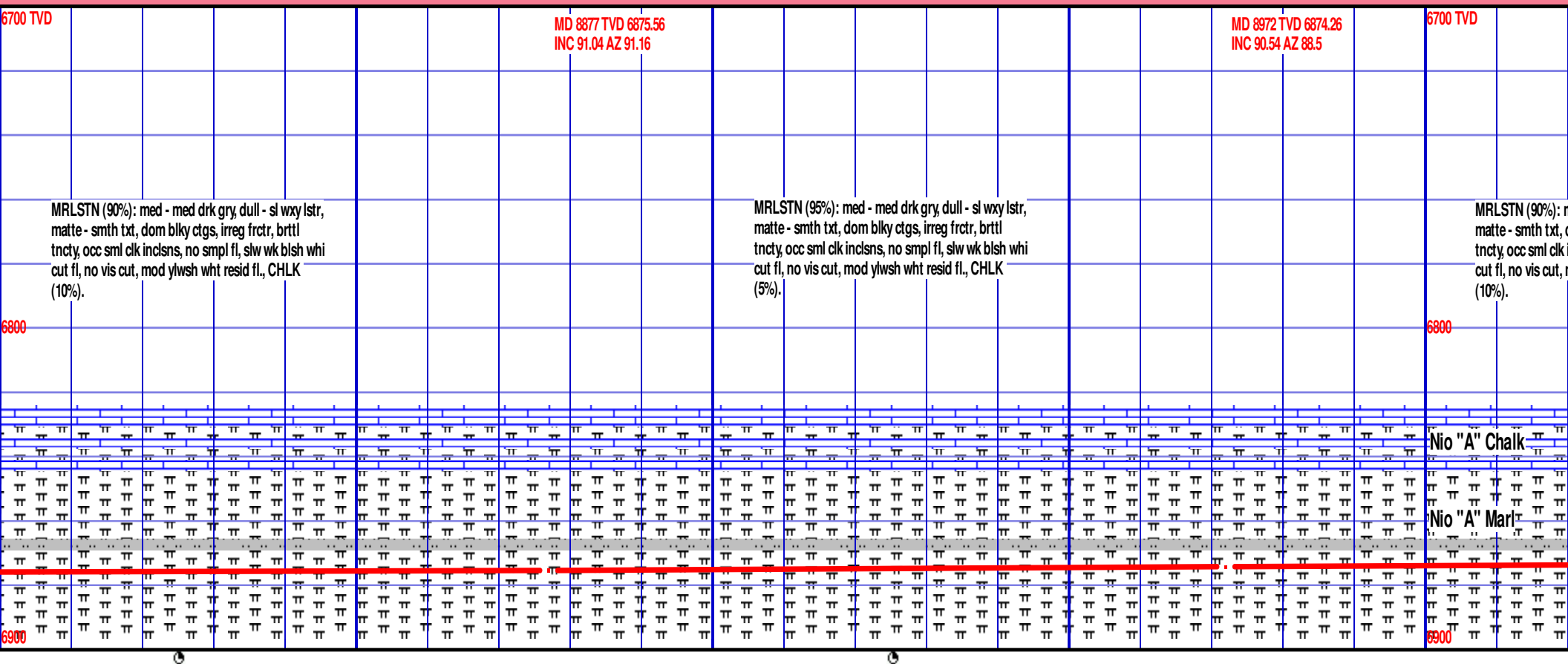
WOB 3.1
RPM 81
SPP 3350
SPM 78

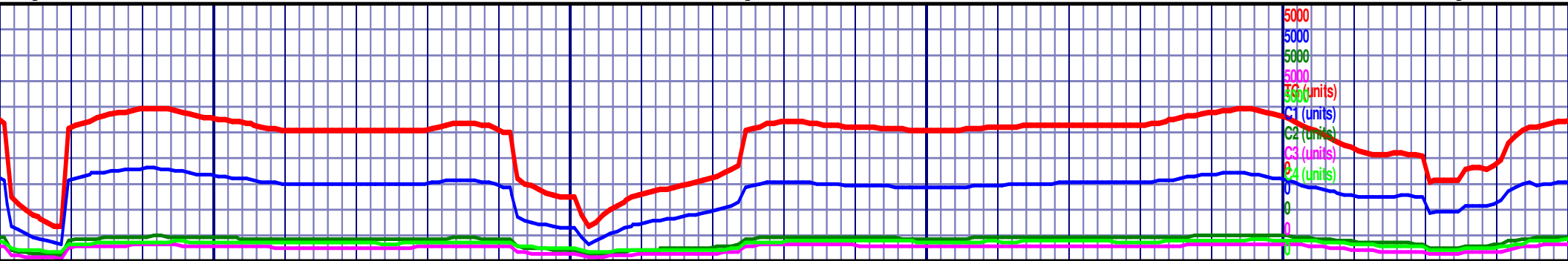
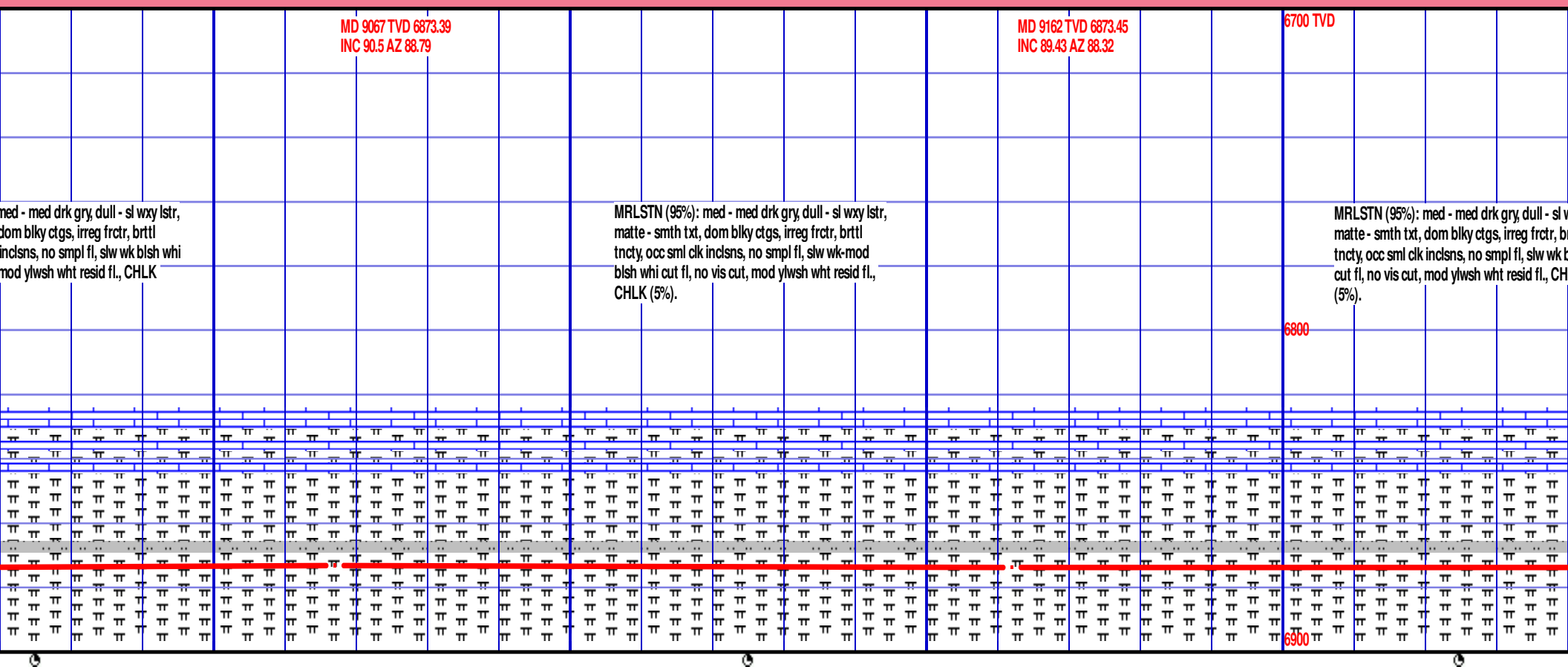
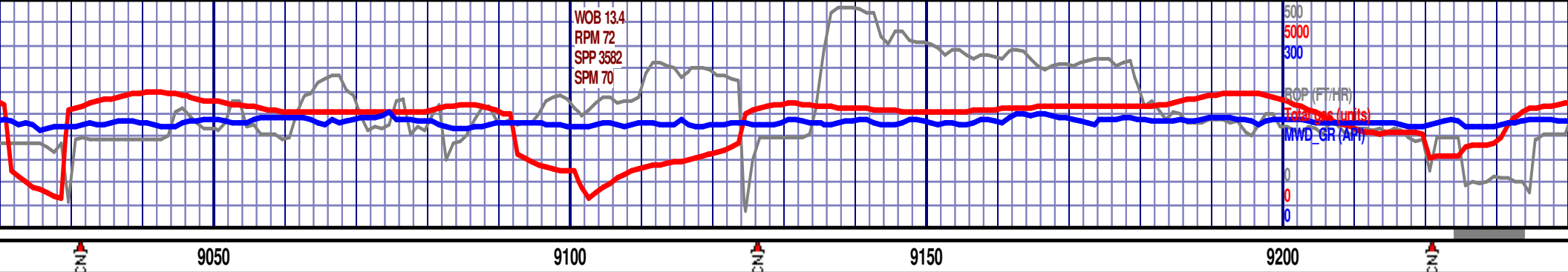


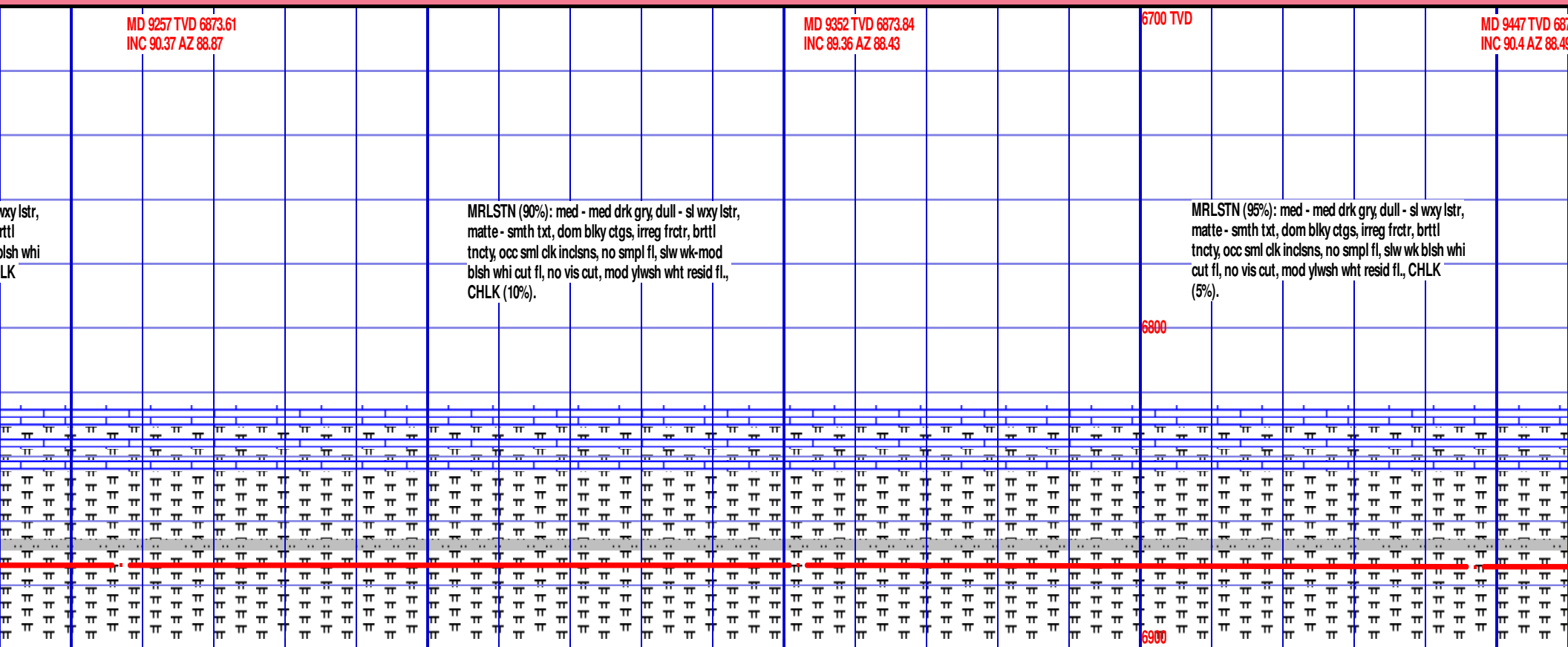


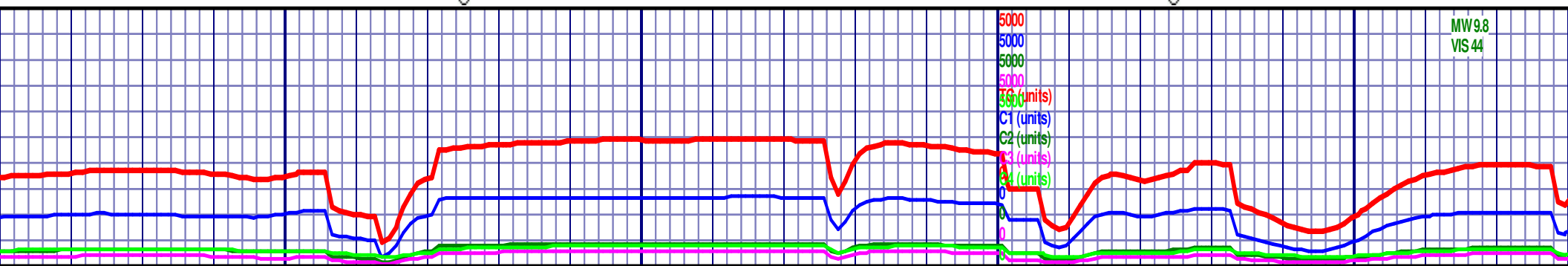
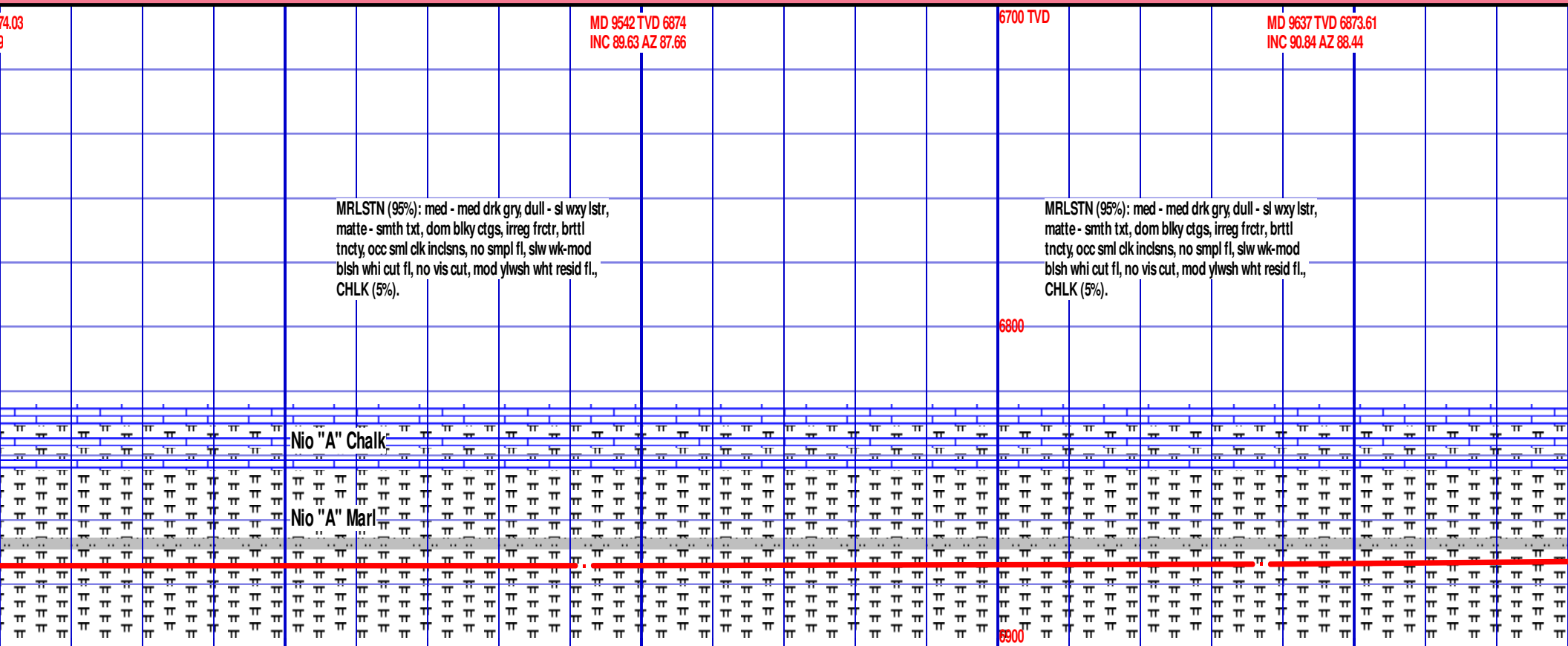


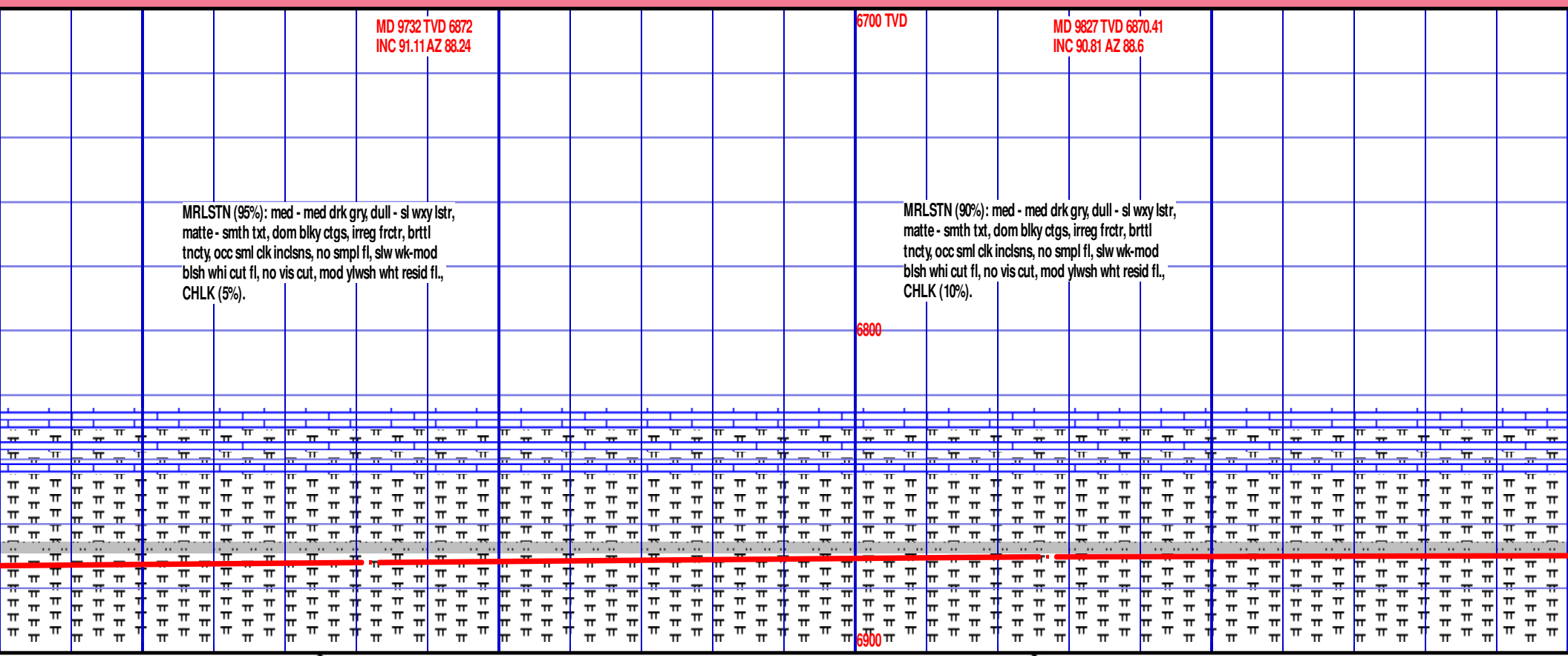
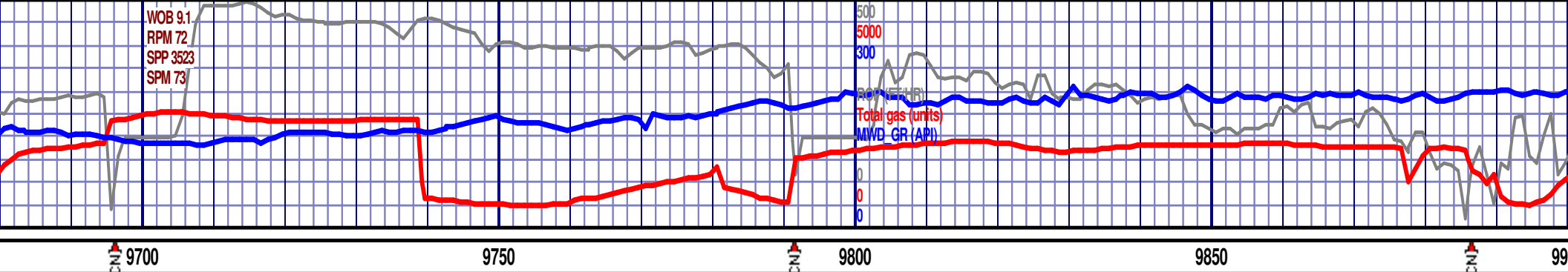






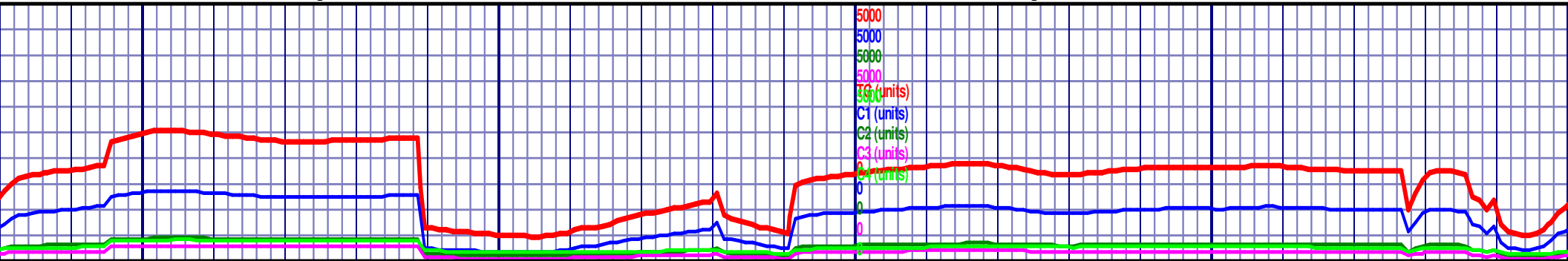






MRLSTN (95%): med - med drk gry, dull - sl wxy lstr, matte - smth txt, dom blkly ctgs, irreg frctr, brttl tncy, occ sml clk inclns, no smp fl, slw wk-mod blsh whi cut fl, no vis cut, mod ylwsh wht resid fl, CHLK (5%).

MRLSTN (90%): med - med drk gry, dull - sl wxy lstr, matte - smth txt, dom blkly ctgs, irreg frctr, brttl tncy, occ sml clk inclns, no smp fl, slw wk-mod blsh whi cut fl, no vis cut, mod ylwsh wht resid fl, CHLK (10%).



WOB 13.5
RPM 62
SPP 3656
SPM 72



6700 TVD

MD 10017 TVD 6869.69
INC 90.2 AZ 88.99

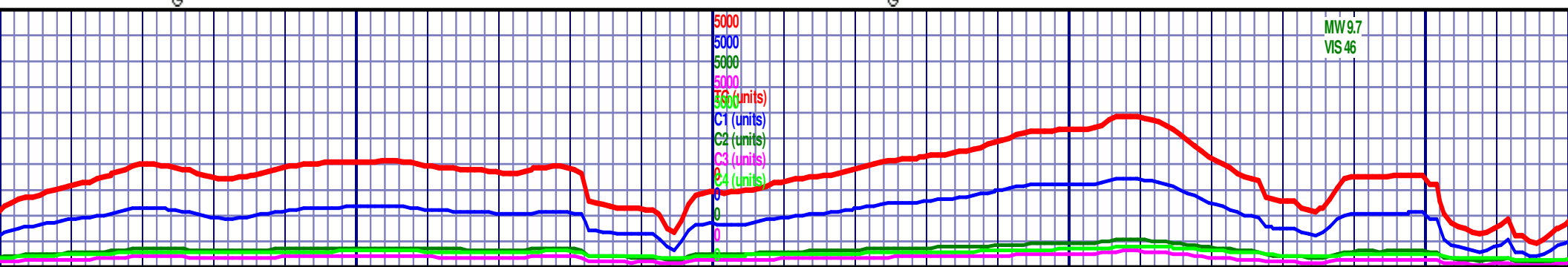
MD 10112
INC 91.14

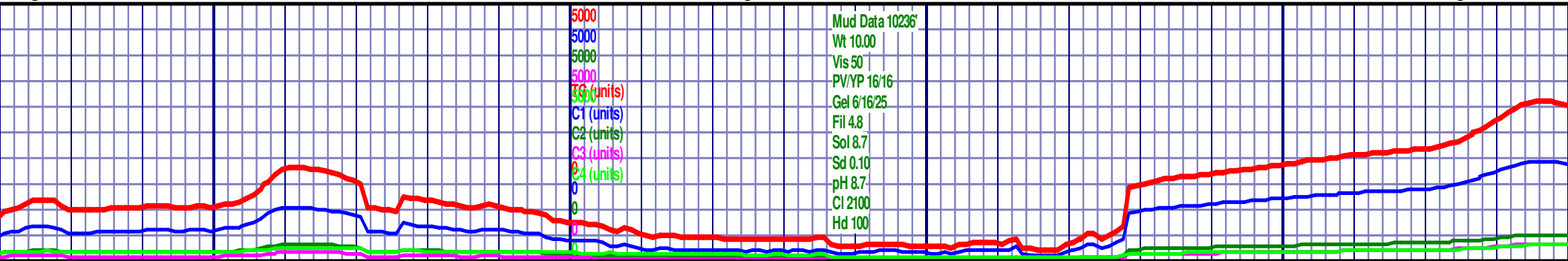
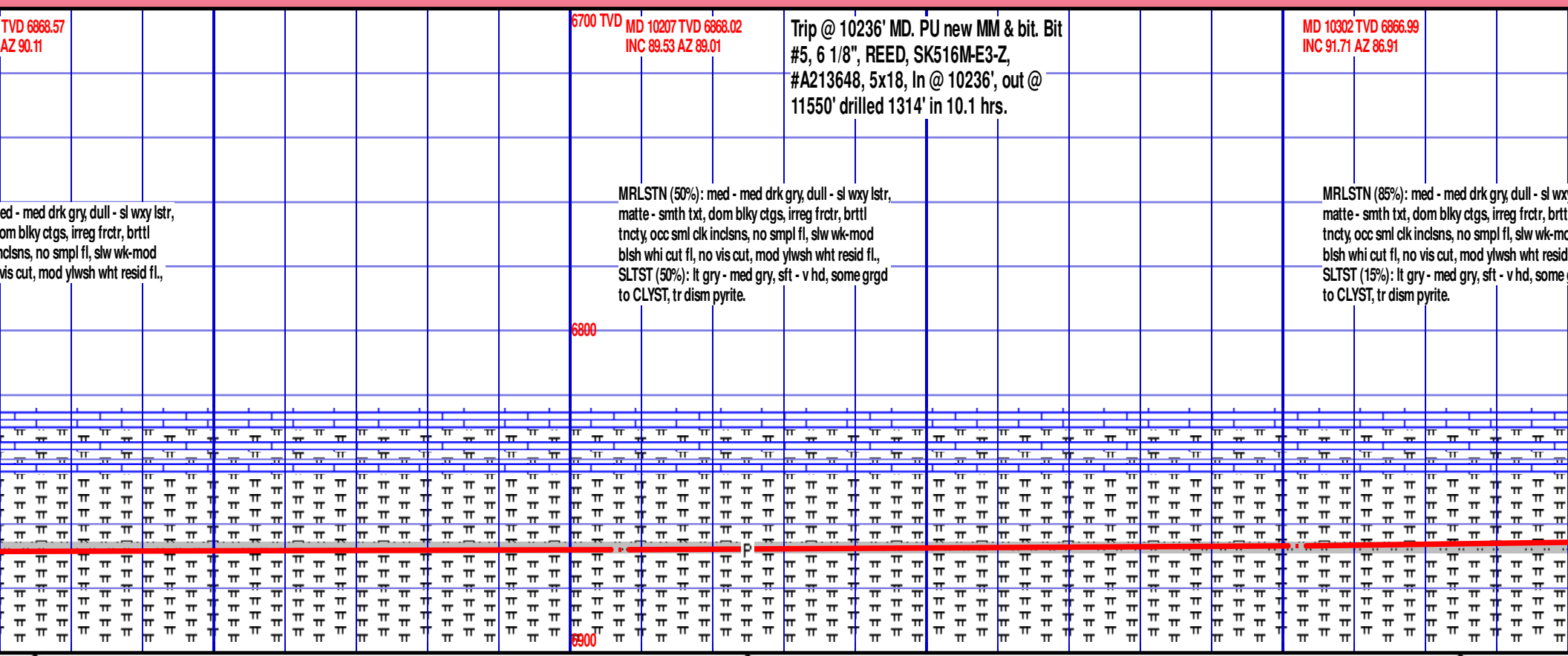
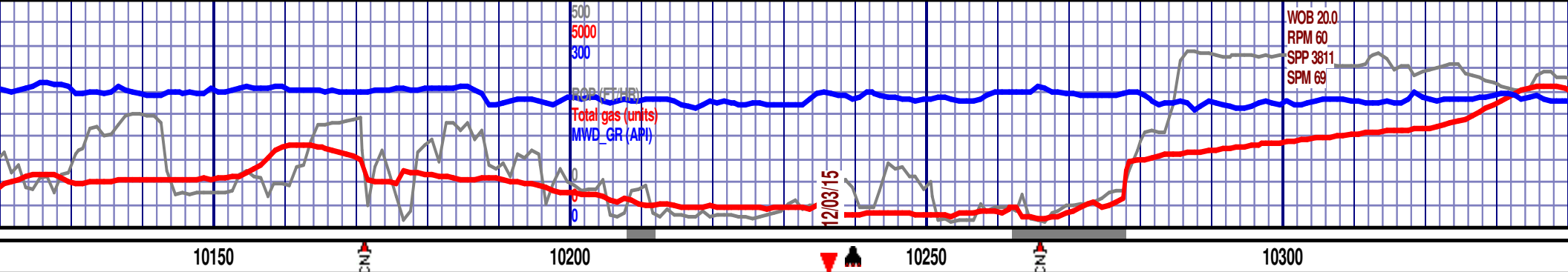
MRLSTN (95%): med - med drk gry, dull - sl wxy
lstr, matte - smth txt, dom bkly ctgs, irreg frctr,
brttl tncy, occ sml clk inclns, no smpl fl, slw wk
blsh whi cut fl, no vis cut, mod ylwsh wht resid fl,
CHLK (5%).

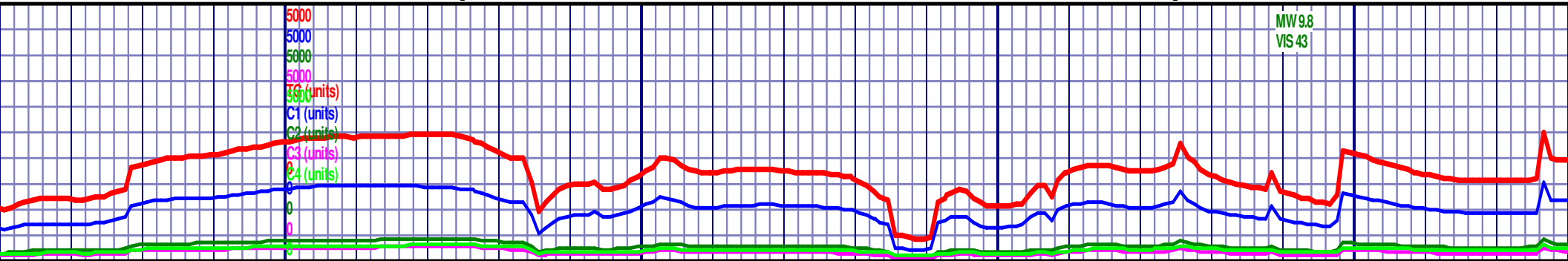
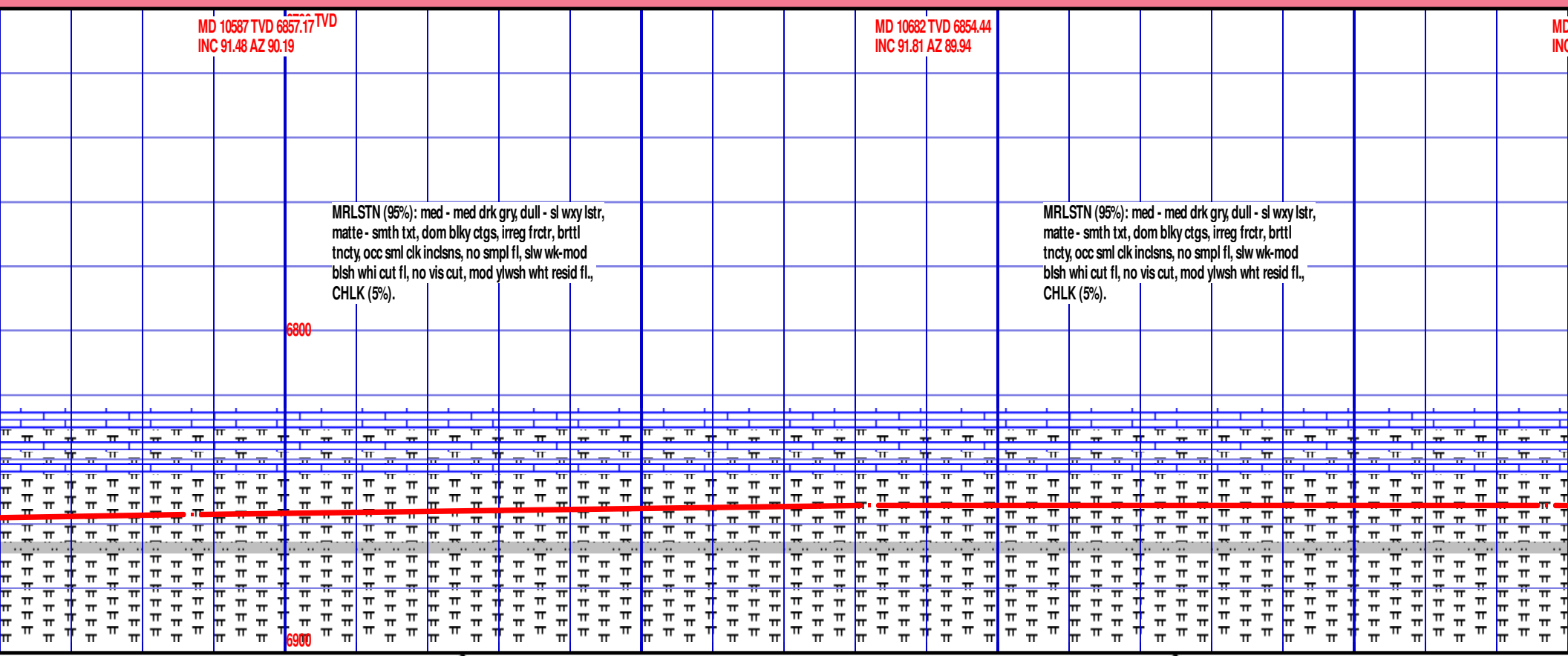
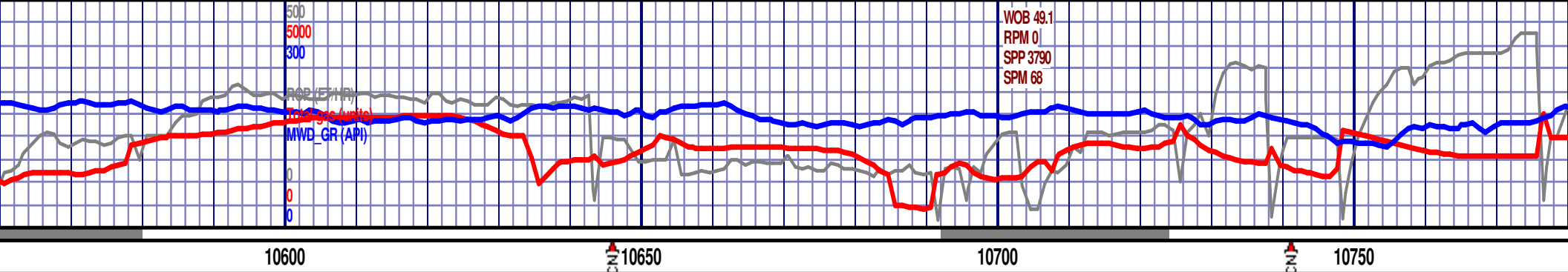
MRLSTN (95%): m
matte - smth txt, d
tncty, occ sml clk in
blsh whi cut fl, no
CHLK (5%).

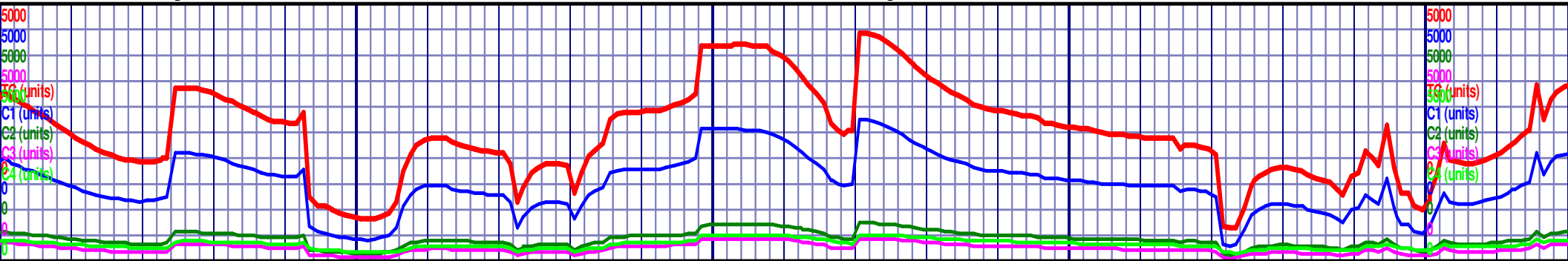
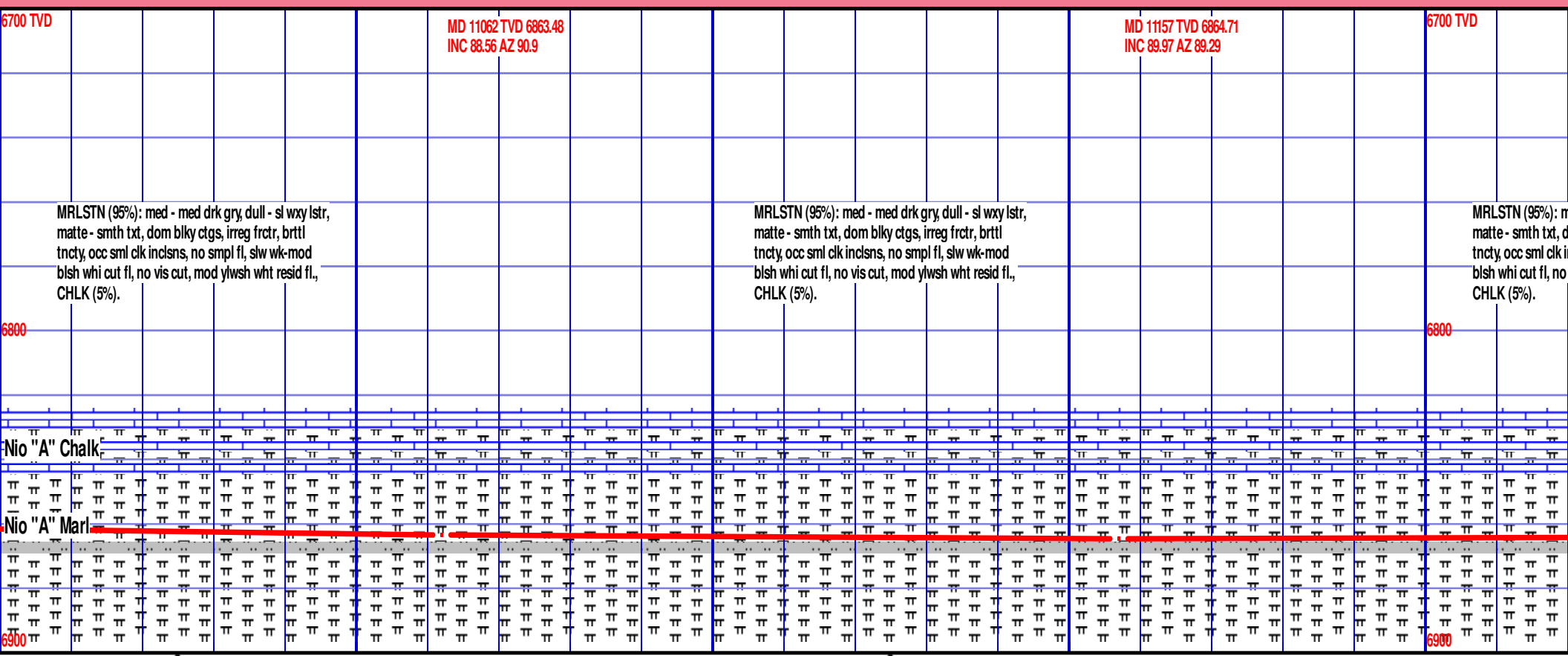
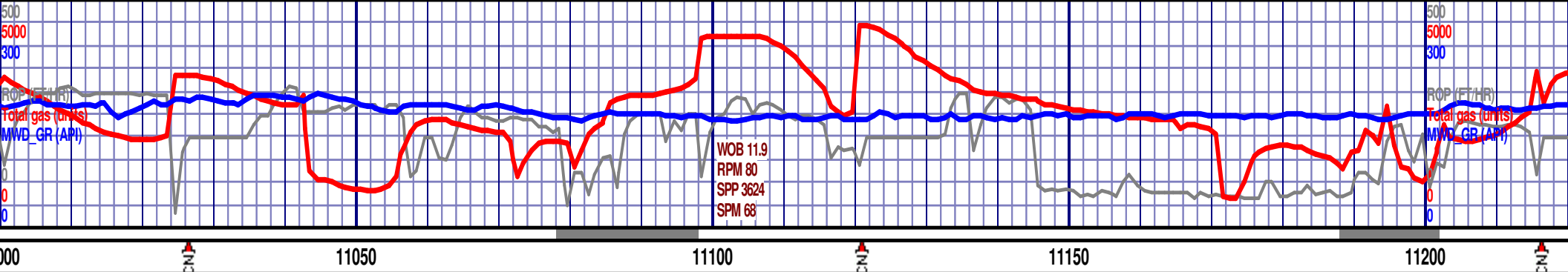
Nio "A" Chalk

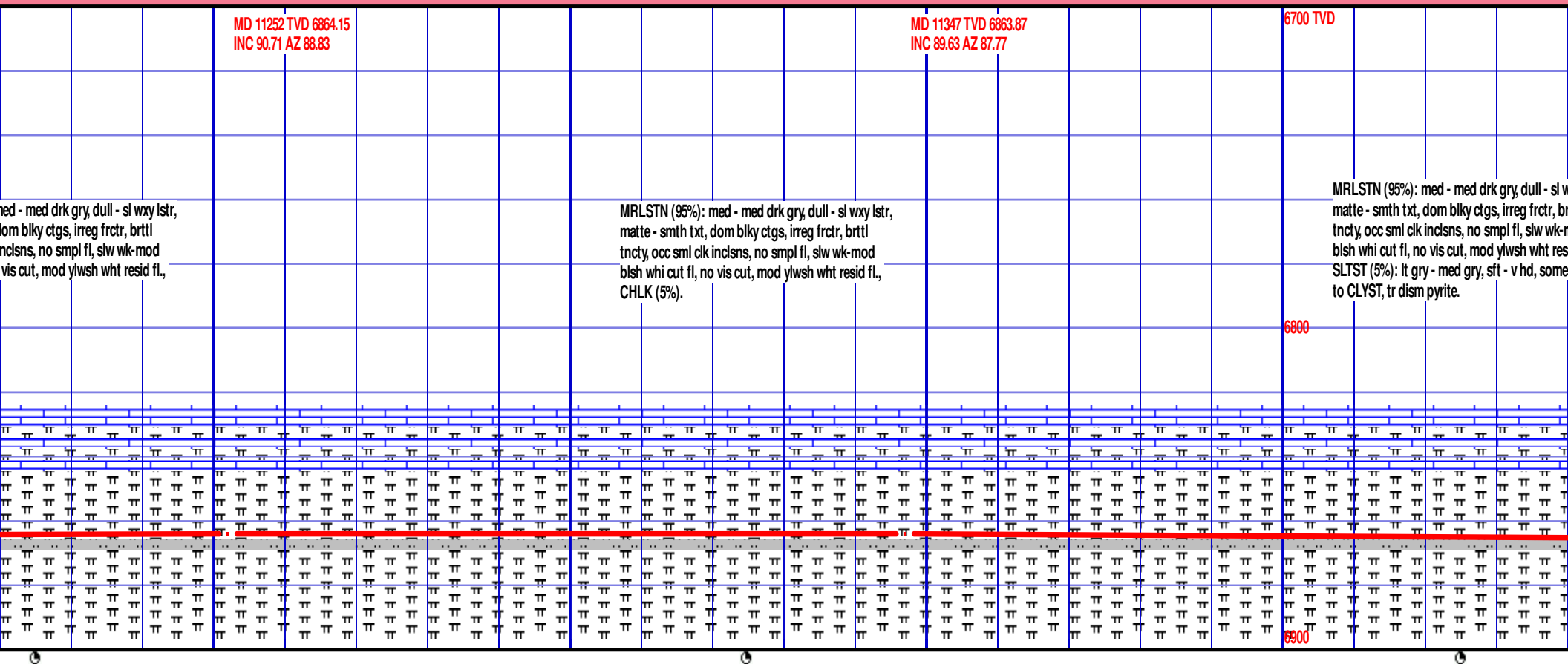
Nio "A" Marl.

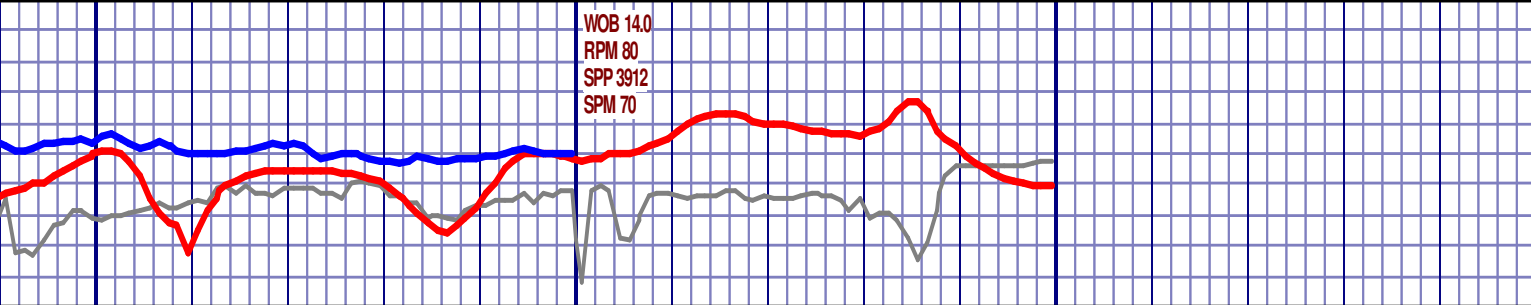












WOB 14.0
RPM 80
SPP 3912
SPM 70

11450

11500

11550

11600



MD 11442 TVD 6865.07
INC 88.93 AZ 87.66

MD 11491 TVD 6866.25
INC 88.32 AZ 87.74

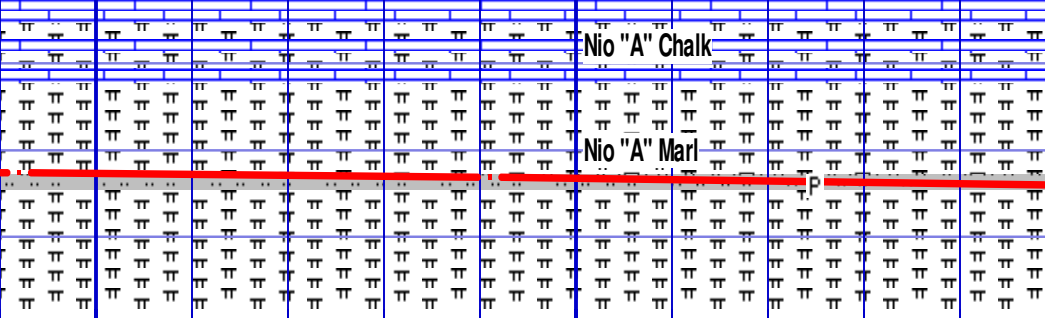
MD 11550 TVD 6868
INC 88.32 AZ 87.74

xy lstr,
tttl
mod
id fl.,
grgd

MRLSTN (95%): med - med drk gry, dull - sl wxy lstr,
matte - smth txt, dom blk cytgs, irreg frctr, brttl
tncty, occ smt clk inclns, no smpl fl, slw wk-mod
blsh whi cut fl, no vis cut, mod ylwsh wht resid fl.,
SLTST (5%): lt gry - med gry, sft - v hd, some grgd
to CLYST, tr dism pyrite.

Reached DMTD @ 11550' 05:37 hrs
12/04/2015. Wiper trip 8 stands, pmp
hgh vis swps, condition hole, liner to
11543'.

Formation Tops Picked by Wellsite
Geologist Ryan Scribner (GBA) and
Horizontal Solutions.

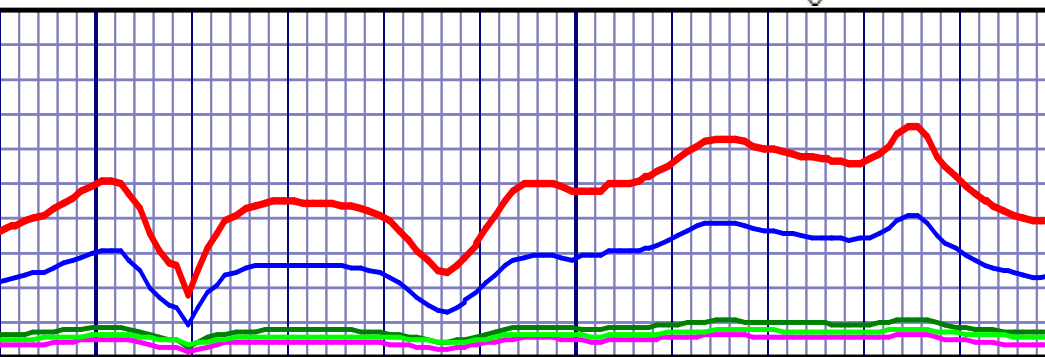


Nio "A" Chalk

Nio "A" Marl

Vertical Tops

Nio A Chalk 6,824' (-1,811') Nio
A Marl 6,846' (-1,833') DMTD
6,868' (TVD) 11,550' (MD) Production
csg 11,543' MD



Mud Data 11550'
Wt 10.40
Vis 41
PV/YP 14/16
Gel 6/11/16
Fil 5.7
Sol 10.3
Sd 0.10
pH 9.0
Cl 2300
Hd 120