

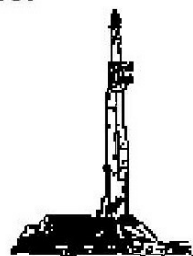
GOOLSBY BROTHERS
and associates, inc.

575 Union Blvd, Suite 208
Lakewood, CO 80228
303-945-2860 Office



Geological Wellsite
Supervision

www.goolsbybrothers.com



Scale 1:240 (5"=100') Imperial
Measured Depth Log

Well Name: SRC VISTA D-2N-C

Well Id: 123

Location: Section 2, T4N, R68W, Weld County, CO.

License Number: API: 05-123-41058

Spud Date: JAN 18, 2016

Surface Coordinates: NWSW 2063 FSL 254 FWL

Region: Wattenberg

Drilling Completed: JAN 23 2016

Bottom Hole Coordinates: SESE 755 FSL 460 FEL

Ground Elevation (ft): 5000'

Logged Interval (ft): 6000' To: 11629'

Formation: NIOBRARA "C" CHALK

Type of Drilling Fluid: LSND

K.B. Elevation (ft): 5013'

Total Depth (ft): 11629' DTD

Printed by HORIZONTAL.LOG from WellSight Systems 1-800-447-1534 www.WellSight.com

OPERATOR

Company: Synergy Resources Corporation

Address:

GEOLOGIST

Name: Tekabe Gedamu

Company: Goolsby Brothers & Assoc. (GBA), Inc. (www.goolsbybrothers.com)

Address: 575 Union Blvd.

Suite 208,

Lakewood CO. 80228

E-logs

MWD GR from 6000'-11640'

Casing

9 5/8" Surface Casing set @ 651' MD


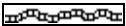
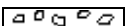

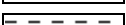
7" Intermediate Casing set @ 7516' MD on Jan 21, 2016






4 1/2" Production Liners/Packers run on Jan 25.






Comments






- 1) Drilling Contractor: Precision Drilling Co, LP 462
- 2) Company Man: Sean Devereaux
Kevin Brakovec
- 3) Mud Comapny : Halliburton
- 4) Directional Drilling: Scintific Drilling
- 5) Gas Equipment: Pason Gas Analyzer (Spectrometer)
- 6) Wellsite Geologist: Tekabe Gedamu

ROCK TYPES

 Anhy
 Bent
 Brec
 Cht
 Cyst

 Coal
 Oil sat.
 Congl
 Dol
 Gyp

 Lmst
 Mrlst
 Salt
 Shale
 Shcol

 Shgy
 Ss
 Sltst
 Ss
 Chalk

 Carb sh
 Sltty sh

ACCESSORIES

MINERAL

Anhy
 Arggrn
 Arg
 Bent
 Bit
 Brecfrag
 Calc
 Carb
 Chtdk
 Chtlt
 Dol
 Feldspar
 Ferrpel
 Ferr
 Glau

Gyp
 Hvymin
 Kaol
 Marl
 Minxl
 Nodule
 Phos
 Pyr
 Salt
 Sandy
 Silt
 Sil
 Sulphur
 Tuff

FOSSIL

Algae
 Amph
 Belm
 Bioclst
 Brach
 Bryozoa
 Cephal
 Coral
 Crin
 Echin
 Fish
 Foram
 Fossil
 Gastro
 Oolite

Ostra
 Pelec
 Pellet
 Pisolite
 Plant
 Strom

STRINGER

Chlkstg
 Anhy
 Arg
 Bent
 Coal
 Dol
 Gyp
 Ls

Mrst
 Sltstrg
 Ssstrg

TEXTURE

Boundst
 Chalky
 Cryxln
 Earthy
 Finexln
 Grainst
 Lithogr
 Microxln
 Mudst
 Packst
 Wackest

OTHER SYMBOLS

OIL SHOWS

Even
 Spotted
 Ques
 Dead
 Vspotty

near even

POROSITY TYPE

Earthy
 Fenest
 Fracture

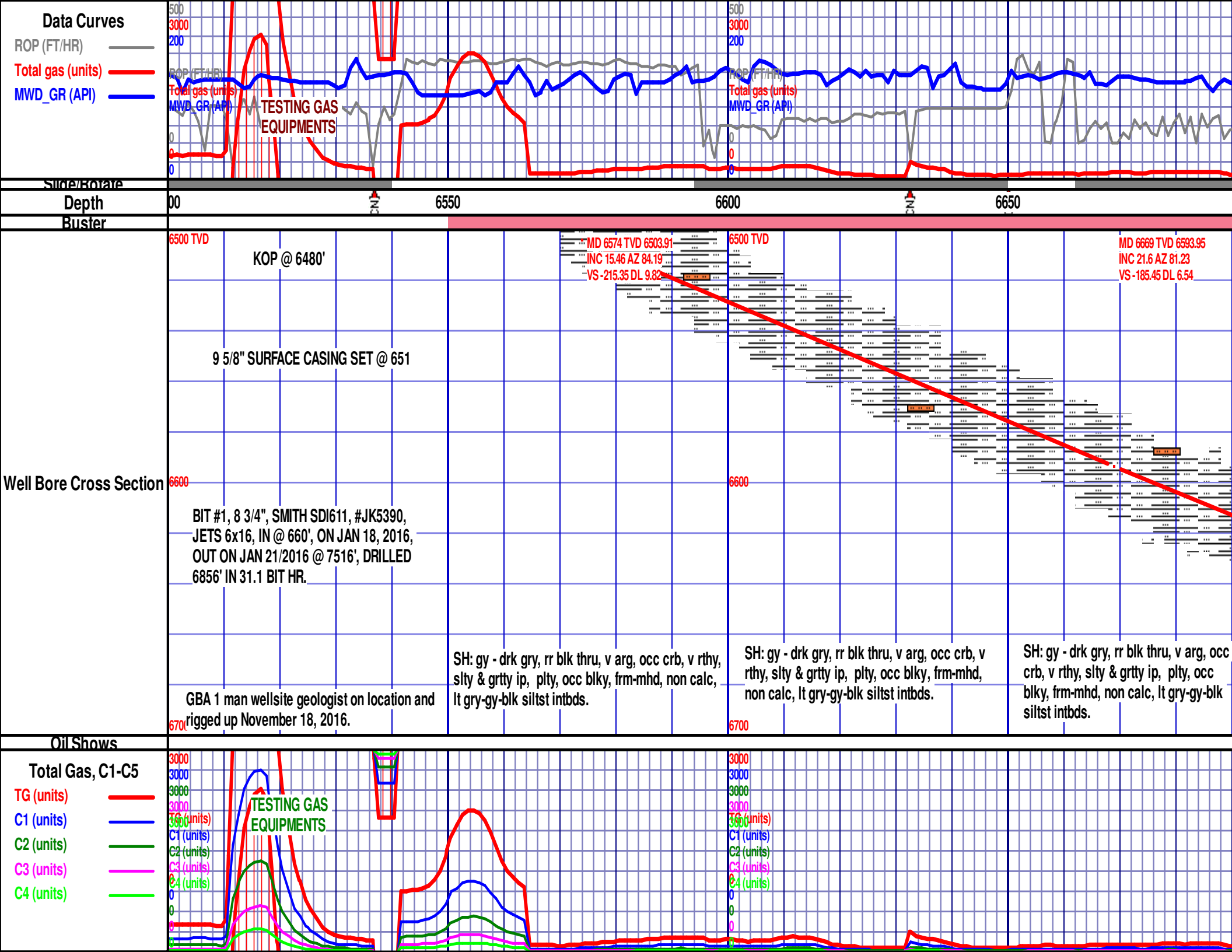
Inter
 Moldic
 Organic
 Pinpoint
 Vuggy

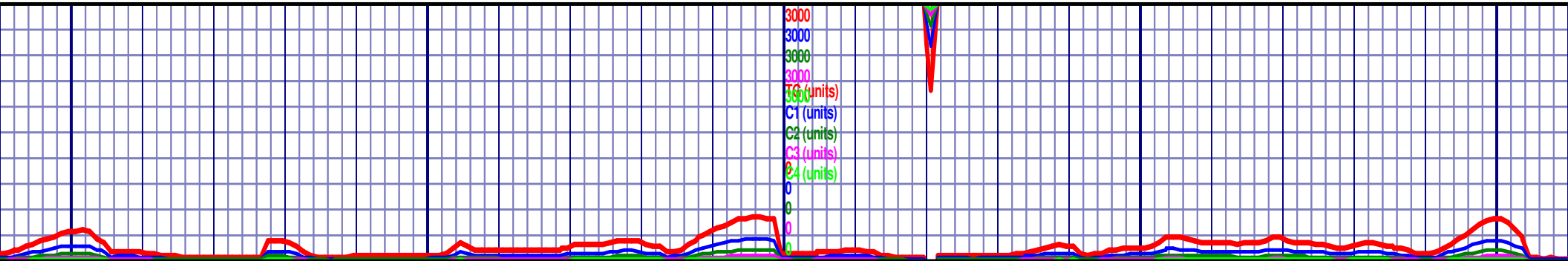
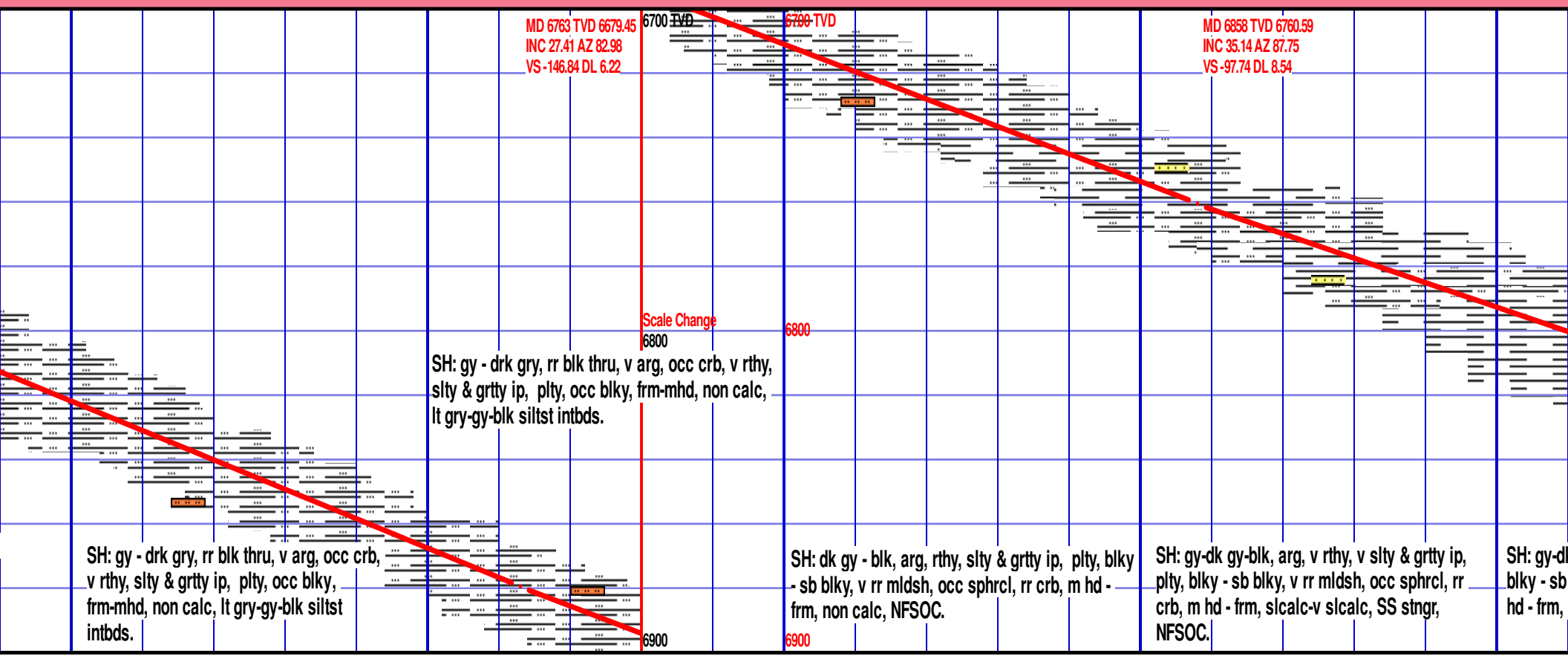
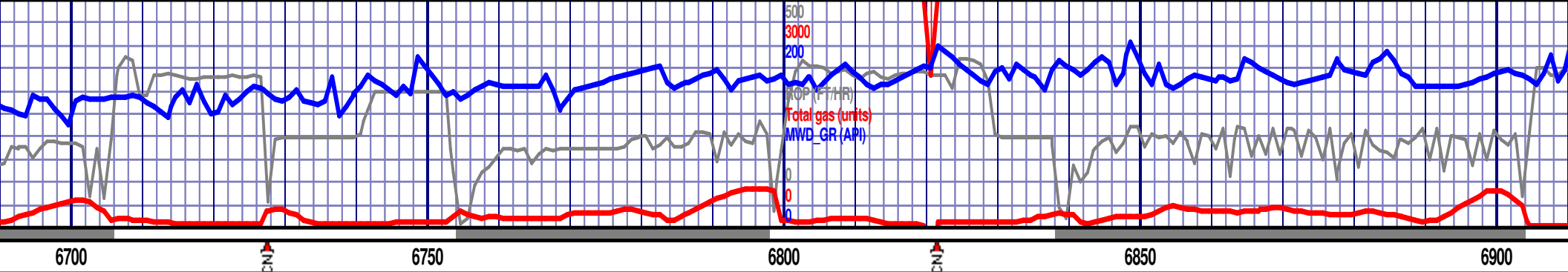
ROUNDING

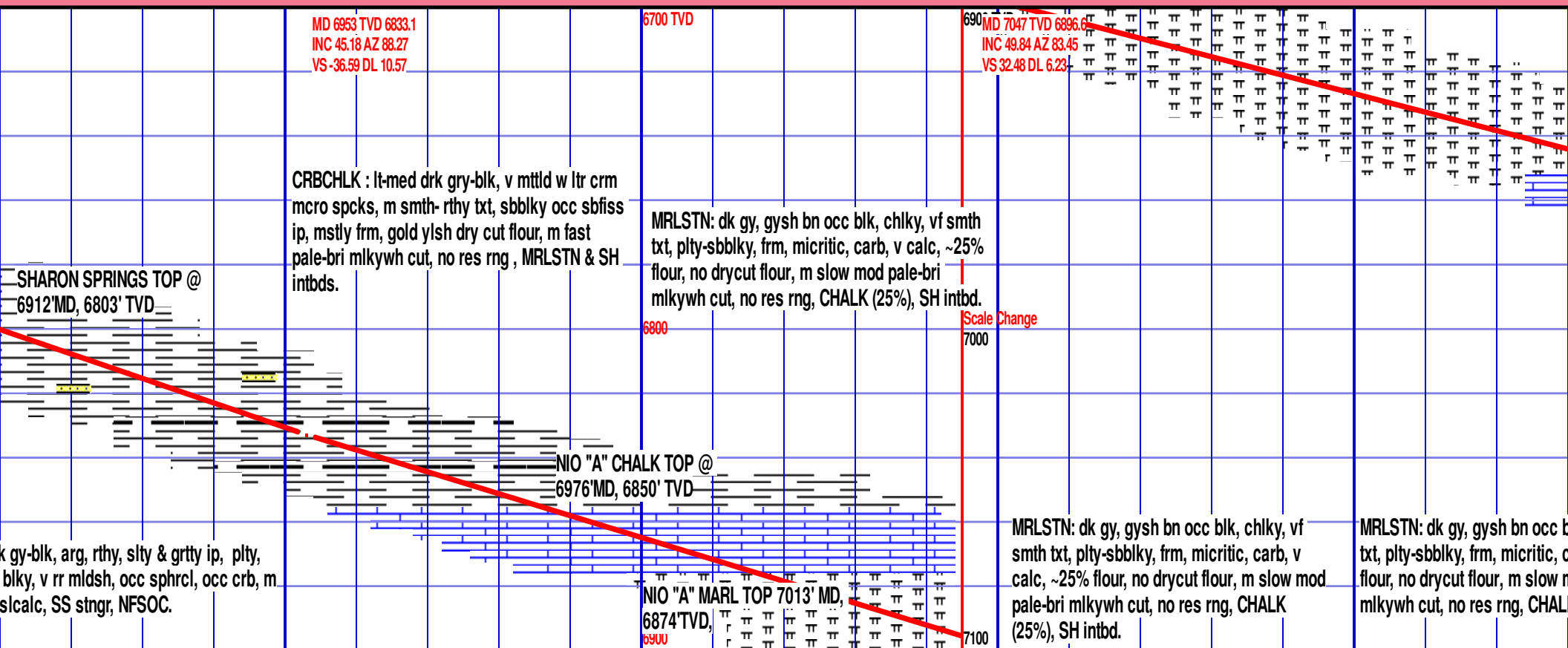
Rounded
 Subrnd
 Subang
 Angular

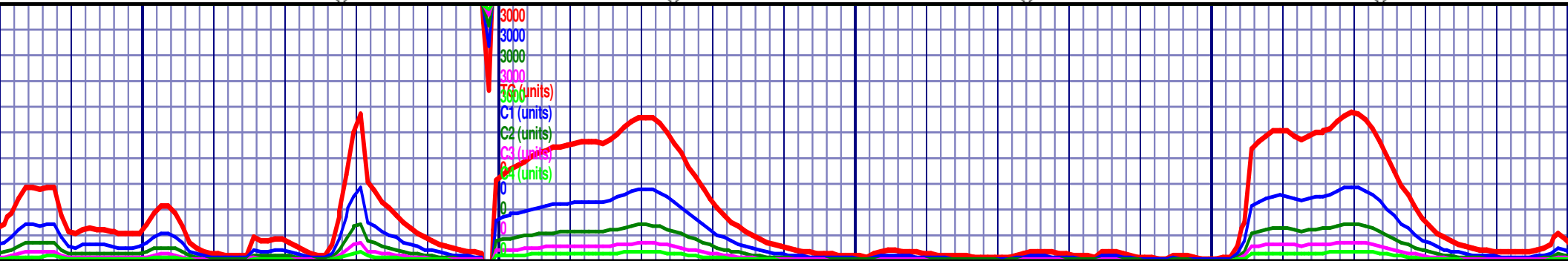
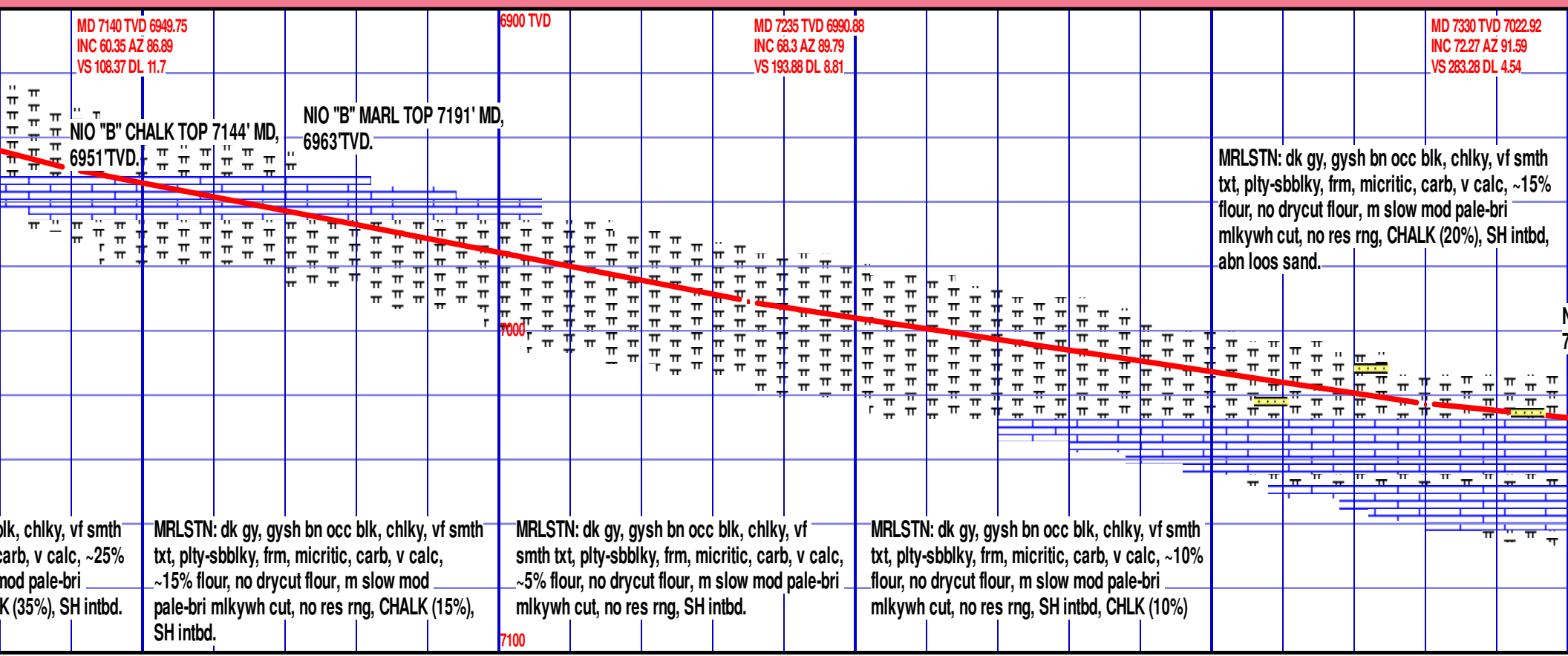
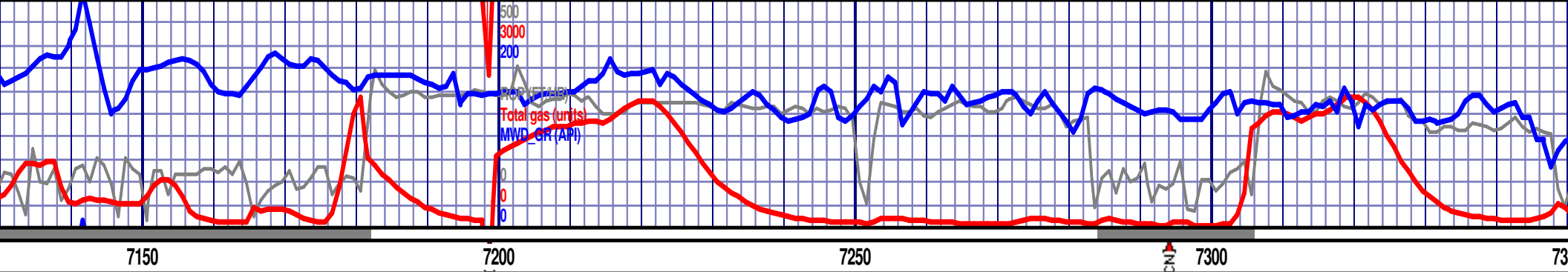
SORTING

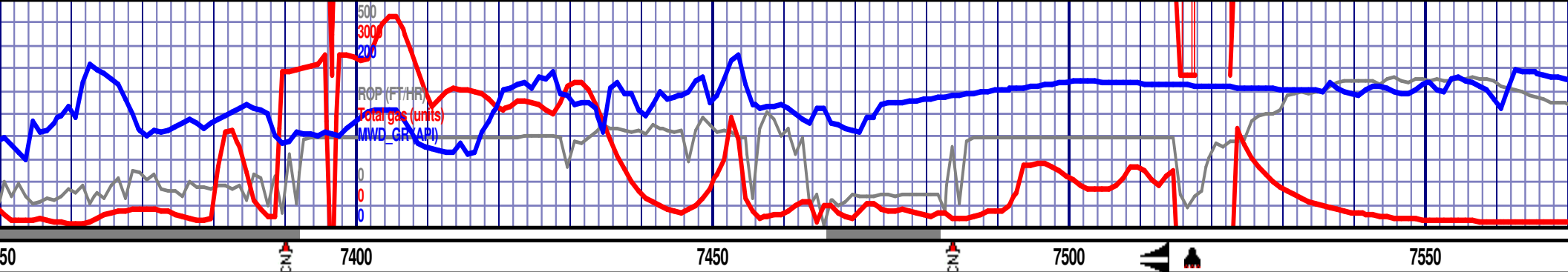
Well
 Moderate
 Poor



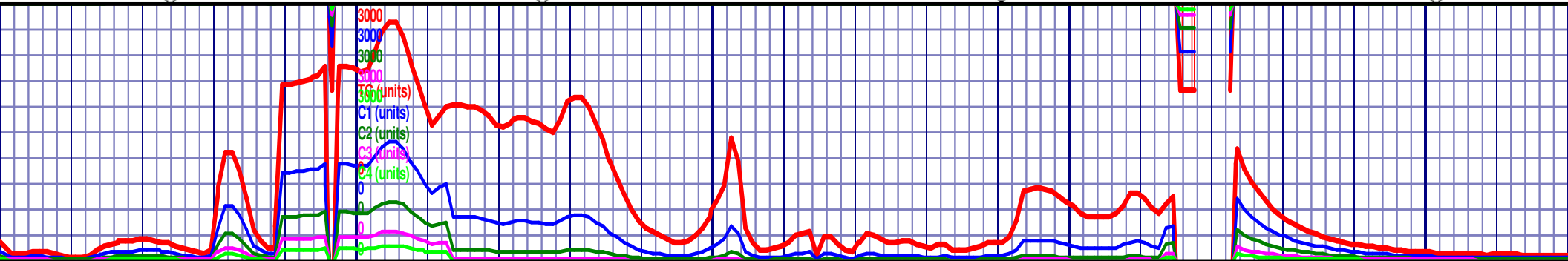


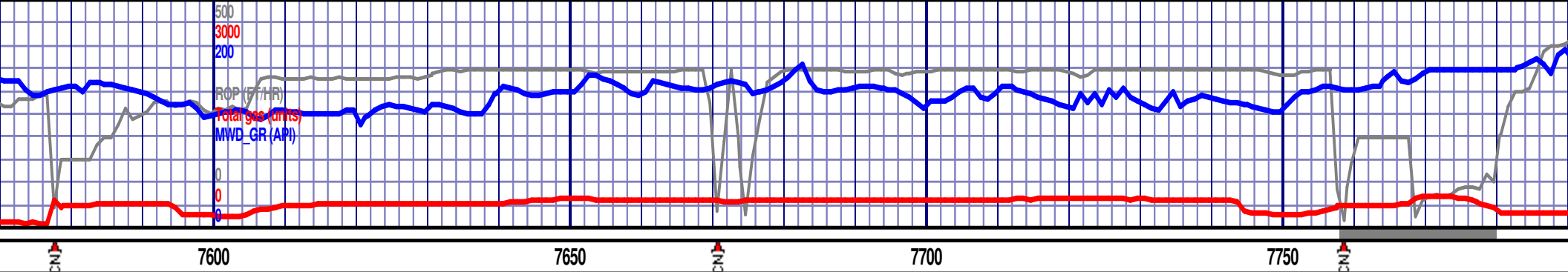






<p>CRBCHLK : lt-med drk gry, mttld w ltr crm micro spcks, v rthy txt, sbblky occ sbfiss ip, mstly frm, gold ylsh dry cut flour, m fast pale-bri mlkywh cut, no res rng , MRLSTN & SH intbds 10%.</p> <p>NIO "C" CHALK TOP 7347' MD, 7028'TVD.</p> <p>NIO "B" MARL</p> <p>NIO "C" CHALK</p> <p>NIO "C" MARL</p>	<p>6900 TVD</p> <p>MD 7425 TVD 7043.15 INC 83.1 AZ 90.16 VS 375.94 DL 11.49</p> <p>CRBCHLK : lt-med drk gry, v mttld w ltr crm micro spcks, v rthy txt, sbblky occ sbfiss ip, mstly frm, gold ylsh dry cut flour, m fast pale-bri mlkywh cut, no res rng , MRLSTN & SH intbds 10%.</p> <p>7000</p>	<p>MD 7458 TVD 7046.85 INC 84.01 AZ 89.43 VS 409.31 DL 3.54</p> <p>CRBCHLK : lt-med drk gry, v mttld w ltr crm micro spcks, v rthy txt, sbblky occ sbfiss ip, mstly frm, gold ylsh dry cut flour, m fast pale-bri mlkywh cut, no res rng , MRLSTN & SH intbds 15%.</p>	<p>IC SET AT 7516' ON 0.13 JAN 21/2016 2.42 00.41 ...14 DL 10.59</p> <p>BIT #2, 6 3/4", SMITH SDI516, #JK8295, JETS 5x15S, IN @ 7516', ON JAN 22, 2016, OUT ON JAN 24/2016 @ 11629', DRILLED 4133' IN 13.3 BIT HR.</p> <p>CRBCHLK : lt-med drk gry, v mttld w ltr crm micro spcks, sbfiss ip, mstly frm, gold ylsh dry cut flour, m fast pale-bri mlkywh cut, no res rng , MRLSTN & SH intbds 15%.</p> <p>7100</p>
--------------------------------------------------------------------------------------------------------------------------------------------------------------------------------------------------------------------------------------------------------------------------------------------------------------------	----------------------------------------------------------------------------------------------------------------------------------------------------------------------------------------------------------------------------------------------------------------------------------------------------------------	------------------------------------------------------------------------------------------------------------------------------------------------------------------------------------------------------------------------------------------------------------------------------------	--------------------------------------------------------------------------------------------------------------------------------------------------------------------------------------------------------------------------------------------------------------------------------------------------------------------------------------------------------------------------------------------------------------------------------------------





6900 TVD

MD 7613 TVD 7050.05
INC 89.9 AZ 87.82
VS 564.02 DL 1.6

MD 7702 TVD 7050.88
INC 89.03 AZ 87.95
VS 652.96 DL 0.99

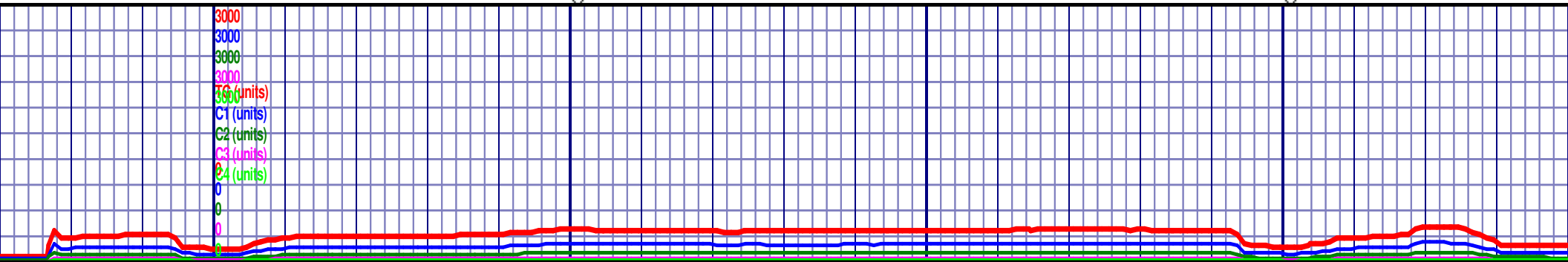
CRBCHLK : lt-med drk gry, v mttld w ltr crm micro spcks, v rthy txt, sbblky occ sbfiss ip, mstly frm, gold yllsh dry cut flour, m fast pale-bri mlkywh cut, no res rng , MRLSTN & SH intbds 15%.

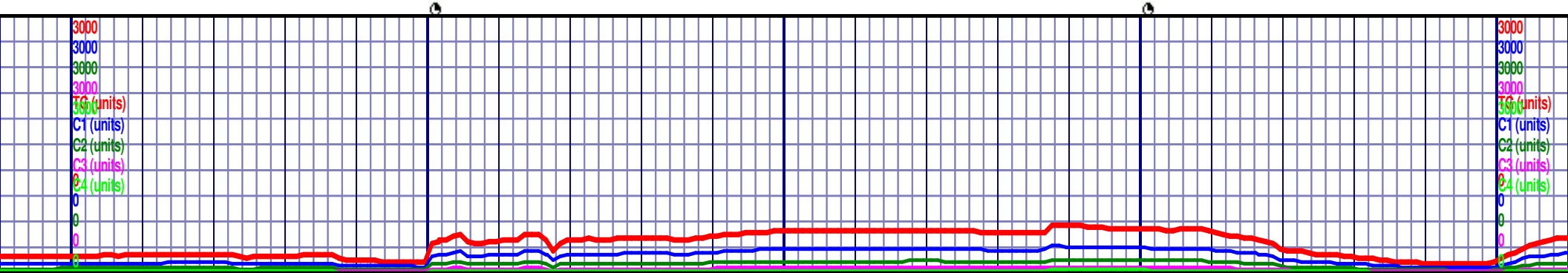
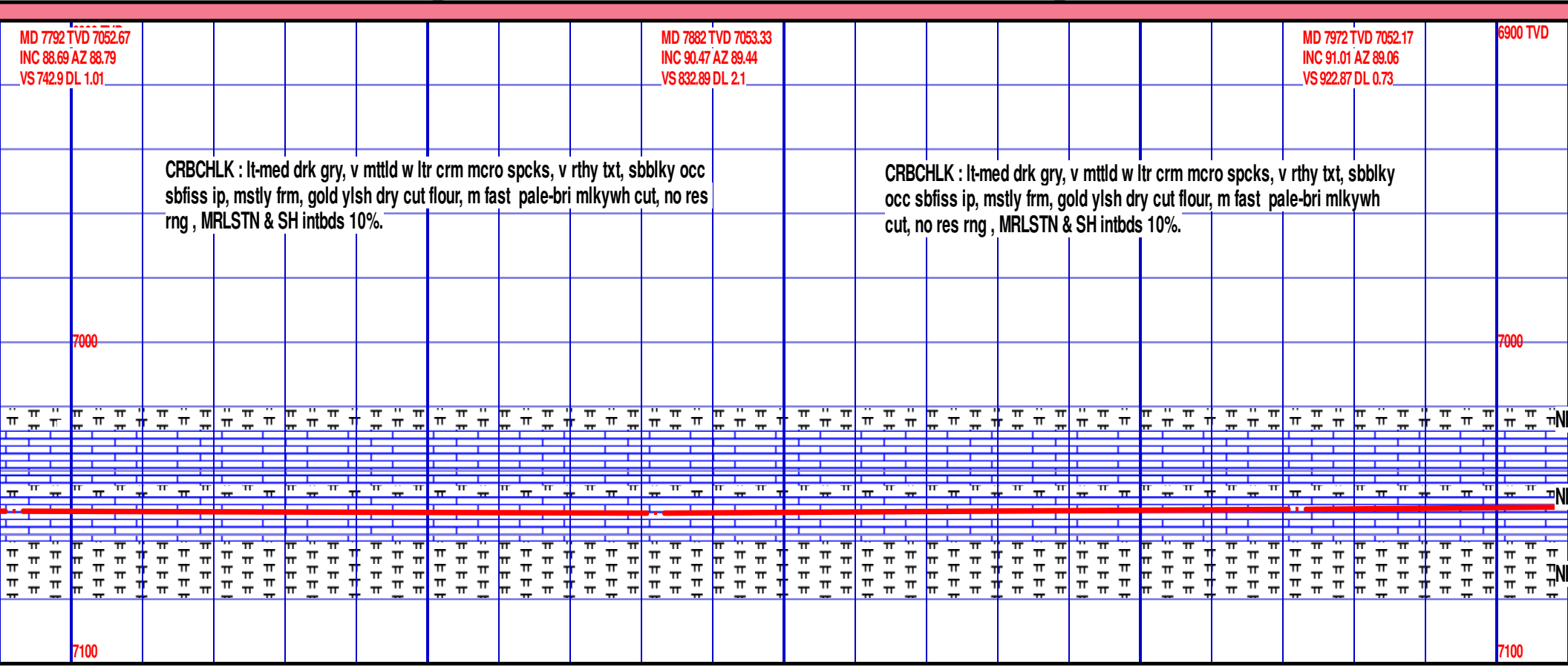
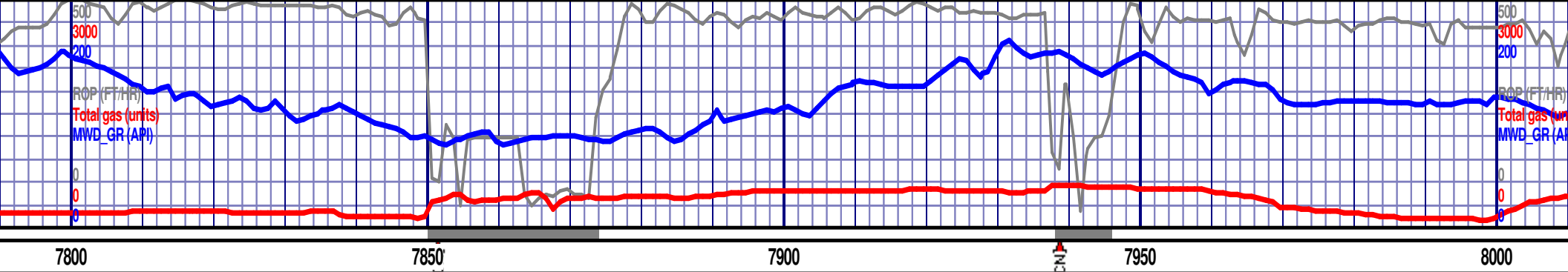
CRBCHLK : lt-med drk gry, v mttld w ltr crm micro spcks, v rthy txt, sbblky occ sbfiss ip, mstly frm, gold yllsh dry cut flour, m fast pale-bri mlkywh cut, no res rng , MRLSTN & SH intbds 10%.

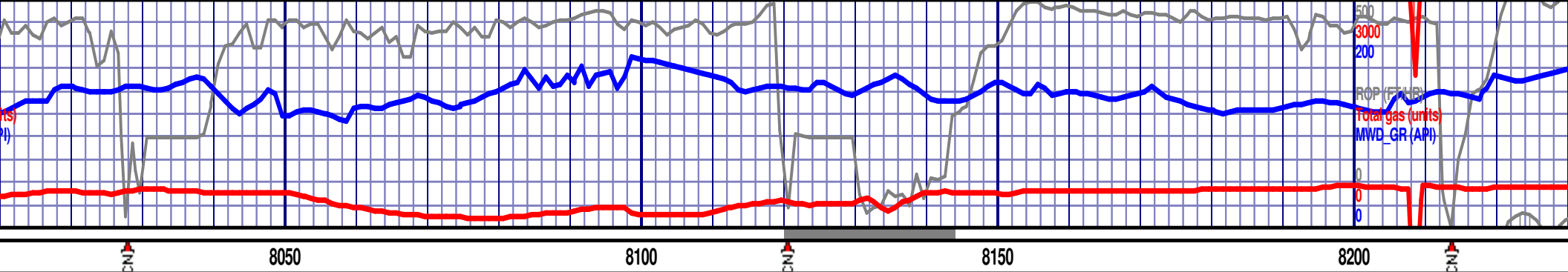
v rthy txt, sbblky occ
bri mlkywh cut, no res

7000

7100







MD 8062 TVD 7050.12
INC 91.61 AZ 88.79
VS 1012.83 DL 0.74

MD 8152 TVD 7048.74
INC 90.13 AZ 89.74
VS 1102.81 DL 1.95

6900 TVD

CRBCHLK : lt-med drk gry, v mttld w ltr crm micro spcks, v rthy txt, sbblky occ sbfiss ip, mstly frm, gold ylsd dry cut flour, m fast pale-bri mlkywh cut, no res rng , MRLSTN & SH intbds 10%.

CRBCHLK : lt-med drk gry, v mttld w ltr crm micro spcks, v rthy txt, sbblky occ sbfiss ip, mstly frm, gold ylsd dry cut flour, m fast pale-bri mlkywh cut, no res rng , MRLSTN & SH intbds 15%.

CRBCHLK : lt-med d
sbblky occ sbfiss ip
mlkywh cut, no res

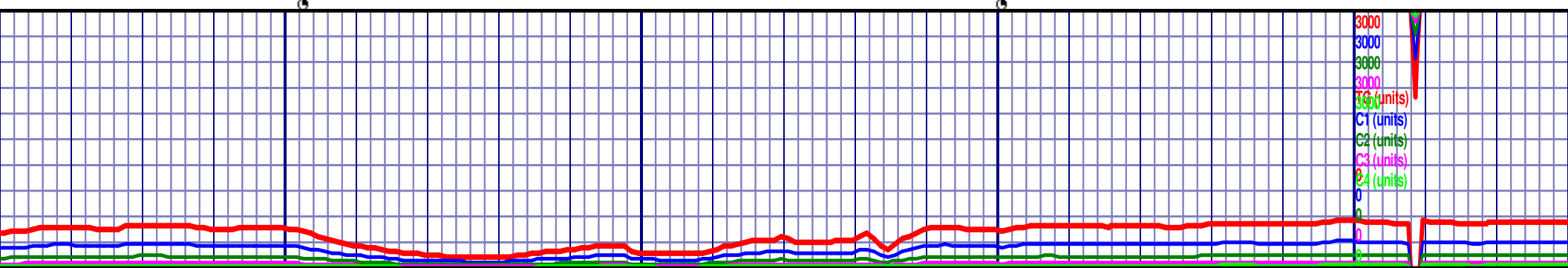
NO "B" MARL

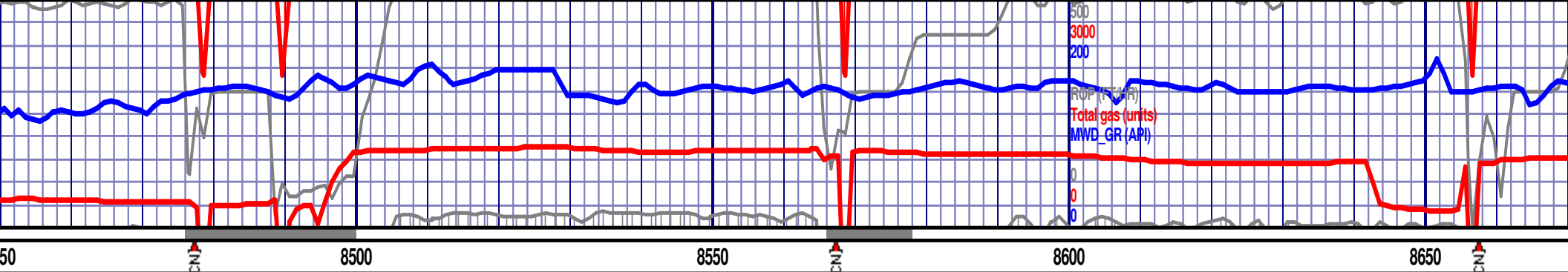
NO "C" CHALK

NO "C" MARL

7000

7100





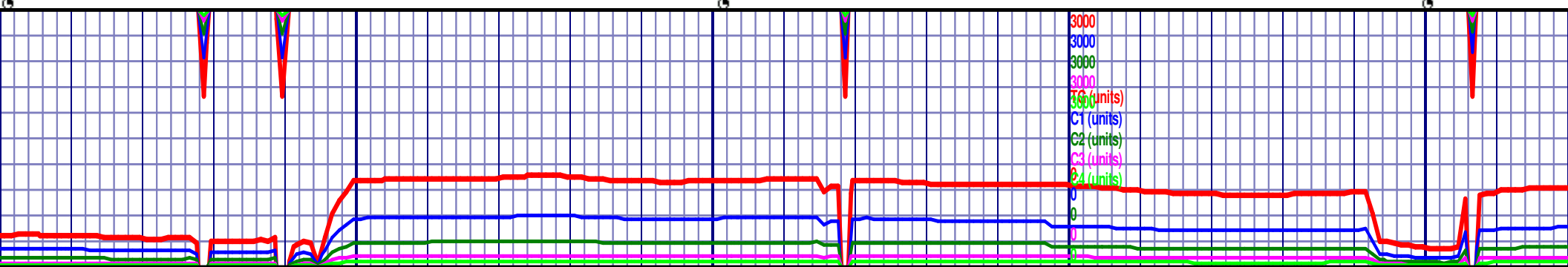
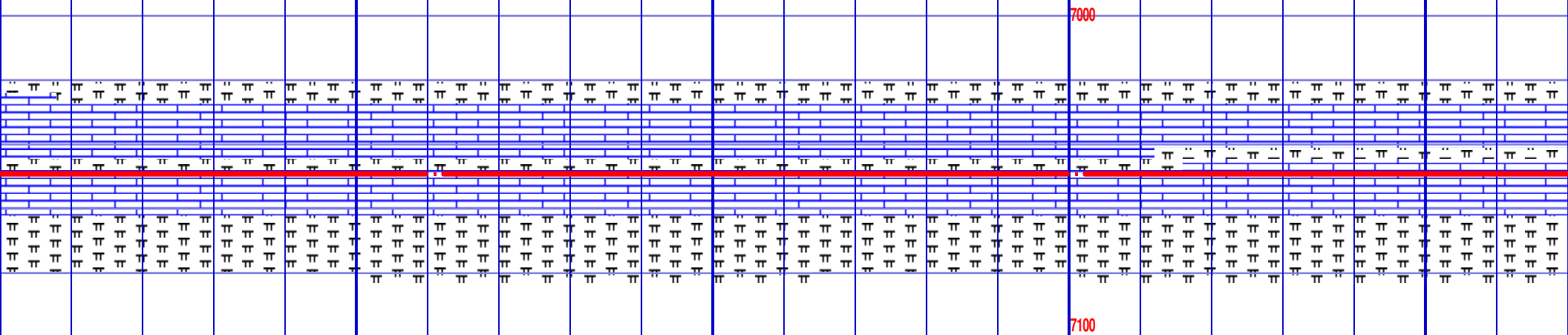
MD 8511 TVD 7049.3
INC 89.97 AZ 90.28
VS 1461.77 DL 1.23

MD 8601 TVD 7049.3
INC 90.03 AZ 90.27
VS 1551.77 DL 0.07

o spcks, v rthy txt,
ut flour, m fast pale-bri
5%.

CRBCHLK : lt-med drk gry, v mtld w ltr crm micro spcks, v rthy txt, sbbky
occ sbfiss ip, mstly frm, gold ylsd dry cut flour, m fast pale-bri mlkywh cut,
no res rng , MRLSTN & SH intbds 15%.

CRBCHLK : lt-med drk gry, v mtld w ltr crm micro spcks, v rthy
sbbky occ sbfiss ip, mstly frm, gold ylsd dry cut flour, m fast
mlkywh cut, no res rng , MRLSTN & SH intbds 15%.

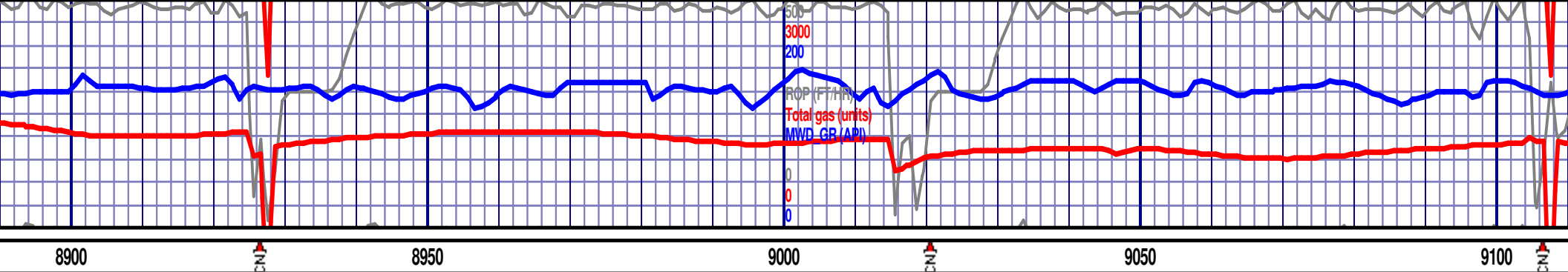




MD 8870 TVD 7049.28
INC 89.87 AZ 90.4
VS 1820.77 DL 0.23

CRBCHLK : lt-med drk gry, v mttld w ltr crm mcro spcks, v rthy txt, sbblky occ
sbfiss ip, mstly frm, abn CLCIT sngr, gold ylsh dry cut flour, m fast pale-bri
mlkywh cut, no res rng , MRLSTN & SH intbds 15%.





MD 8960 TVD 7049.41
INC 89.97 AZ 89.8
VS 1910.77 DL 0.68

6900 TVD

MD 9050 TVD 7049.57
INC 89.83 AZ 89.54
VS 2000.76 DL 0.33

CRBCHLK : lt-med drk gry, v mttld w ltr crm micro spcks, v rthy txt, sbblky occ
sbfiss ip, mstly frm, abn CLCIT stngr, gold ylsh dry cut flour, m fast pale-bri
mlkywh cut, no res rng , MRLSTN & SH intbds 15%.

CRBCHLK : lt-med drk gry, v mttld w ltr crm micro spcks, v rthy txt, sbblky occ
sbfiss ip, mstly frm, abn CLCIT stngr, gold ylsh dry cut flour, m fast pale-bri
mlkywh cut, no res rng , MRLSTN & SH intbds 15%.

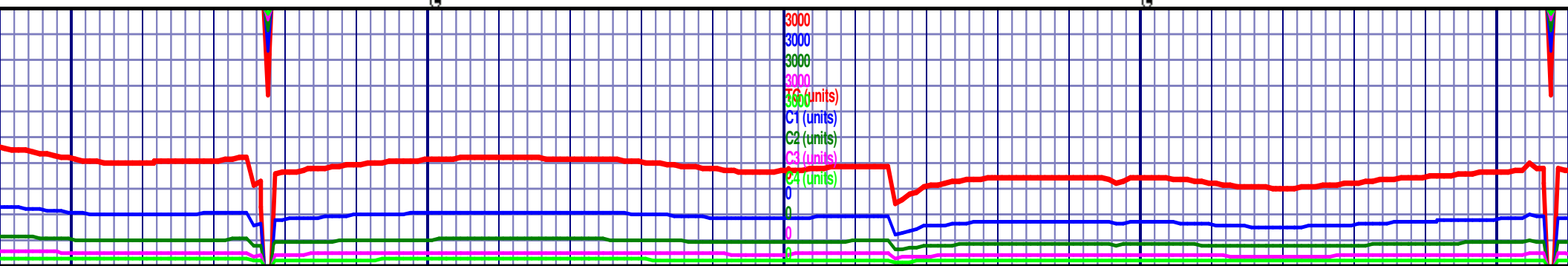
7000

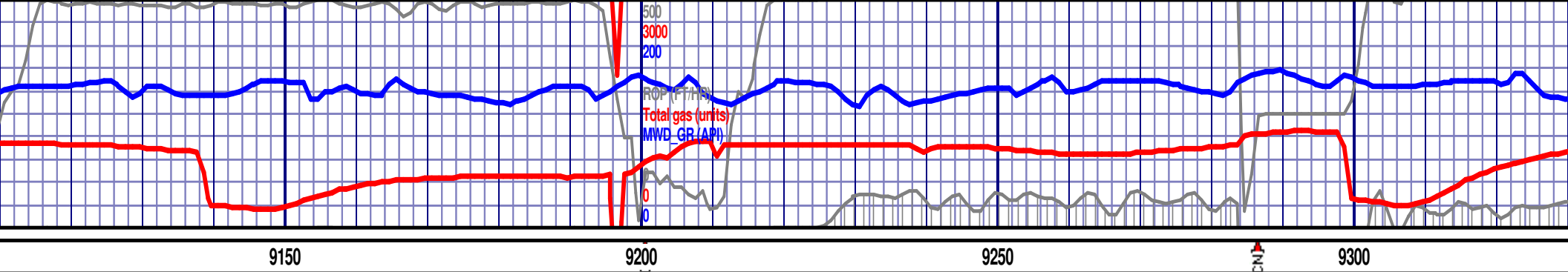
NIO "B" MARL

NIO "C" CHALK

NIO "C" MARL

7100





MD 9140 TVD 7049.83
INC 89.83 AZ 89.07
VS 2090.76 DL 0.53

6900 TVD

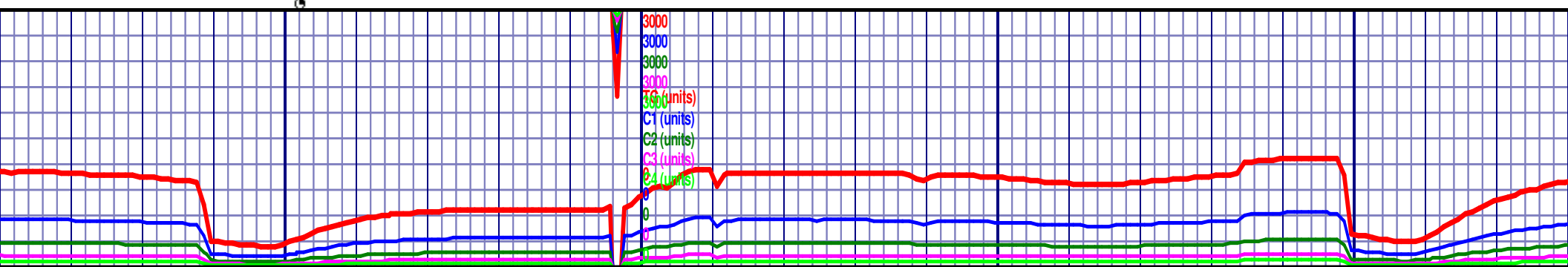
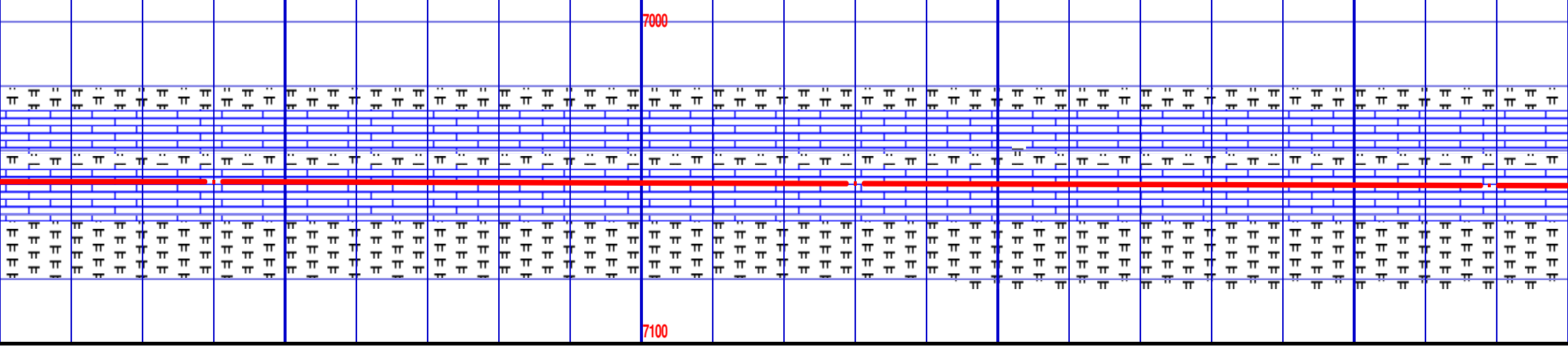
MD 9230 TVD 7050.2
INC 89.7 AZ 90.37
VS 2180.75 DL 1.45

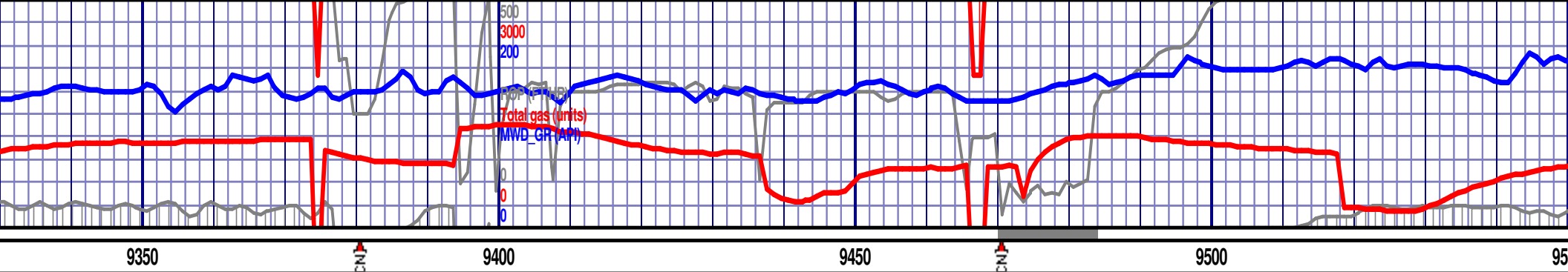
MD 9319 TVD
INC 89.66 AZ
VS 2269.75 DL

CRBCHLK : lt-med drk gry, v mtlld w ltr crm micro spcks, v rthy txt, sbblky occ sbfiss ip, mstly frm, gold ylsh dry cut flour, m fast pale-bri mlkywh cut, no res rng , MRLSTN & SH intbds 15%.

CRBCHLK : lt-med drk gry, v mtlld w ltr crm micro spcks, v rthy txt, sbblky occ sbfiss ip, mstly frm, gold ylsh dry cut flour, m fast pale-bri mlkywh cut, no res rng , MRLSTN & SH intbds 20%.

CRBCHLK : lt-med drk gry, v mtlld w ltr crm micro spcks, v rthy txt, sbblky occ sbfiss ip, mstly frm, gold ylsh dry cut flour, m fast pale-bri mlkywh cut, no res rng , MRLSTN & SH intbds 20%.





7050.7
39.95
0.48

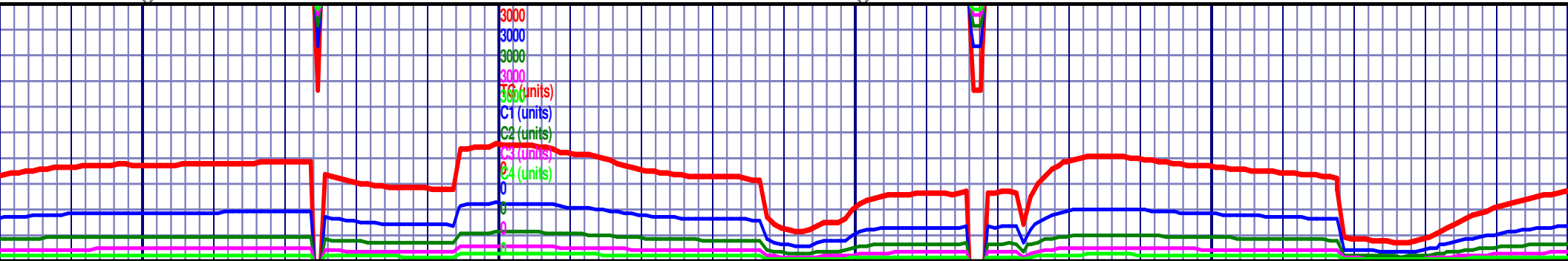
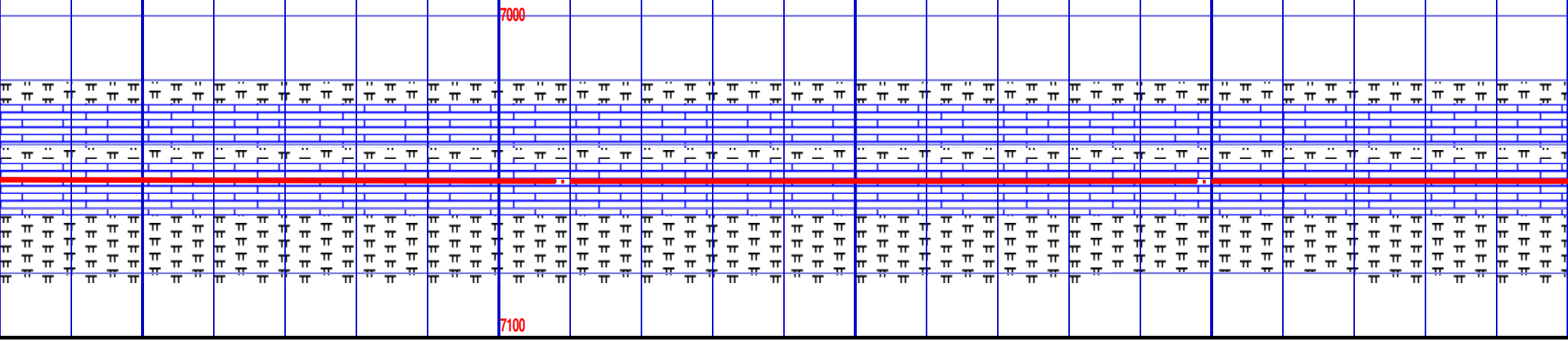
6900 TVD MD 9409 TVD 7051.22
INC 89.66 AZ 89.16
VS 2359.75 DL 0.88

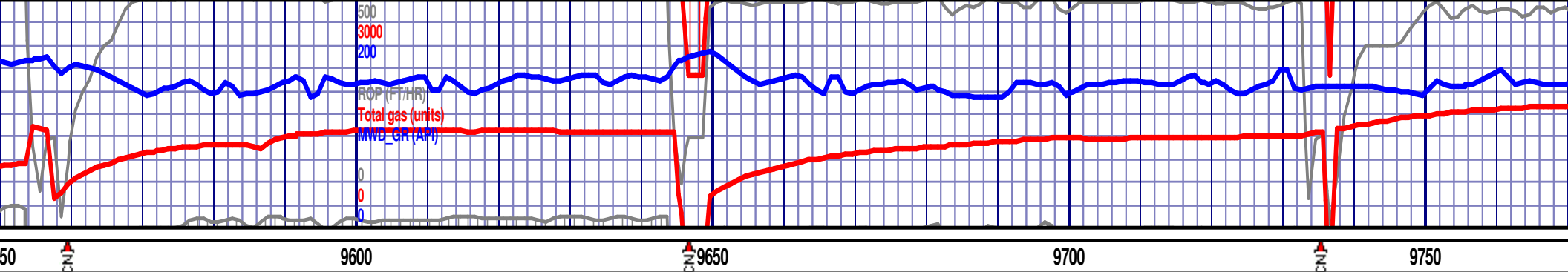
MD 9499 TVD 7051.3
INC 90.23 AZ 91.19
VS 2449.74 DL 2.35

y, v mttld w ltr crm micro spcks, v rthy txt,
tly frm, gold ylsh dry cut flour, m fast pale-bri
MRLSTN & SH intbds 15%.

CRBCHLK : lt-med drk gry, v mttld w ltr crm micro spcks, v rthy txt, sbbky
occ sbfiss ip, mstly frm, gold ylsh dry cut flour, m fast pale-bri mlkywh cut,
no res rng , MRLSTN & SH intbds 15%.

CRBCHLK : lt-med drk gry, v mttld w ltr crm micro spcks, v rthy txt, sbbky
sbbky occ sbfiss ip, mstly frm, gold ylsh dry cut flour, m fast pale-bri mlkywh cut,
no res rng , MRLSTN & SH intbds 15%.





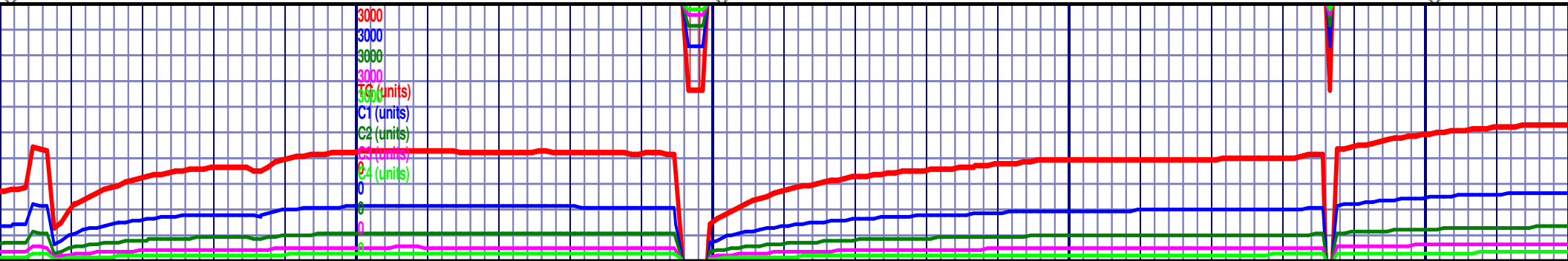
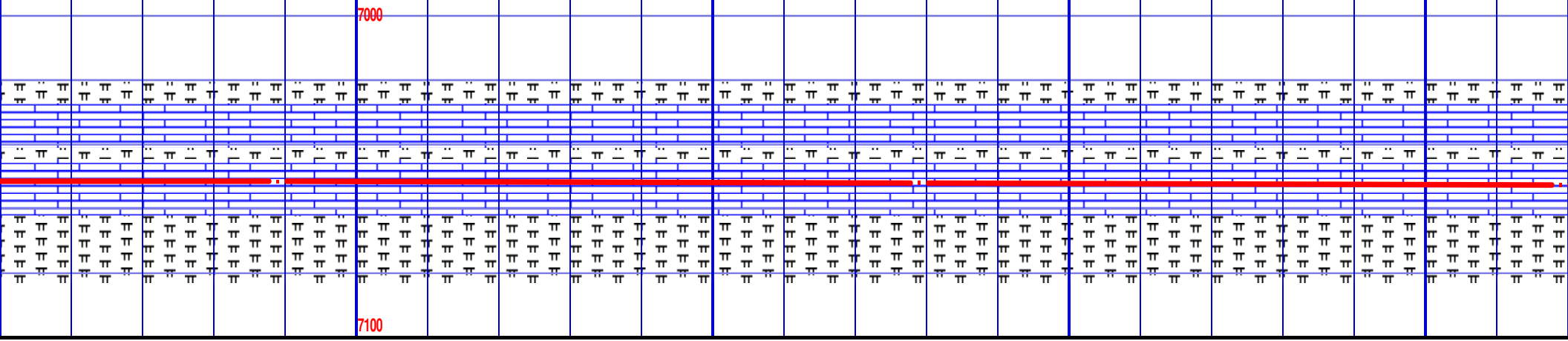
MD 9589 TVD 7051.57VD
INC 89.43 AZ 90.15
VS 2539.73 DL 1.47

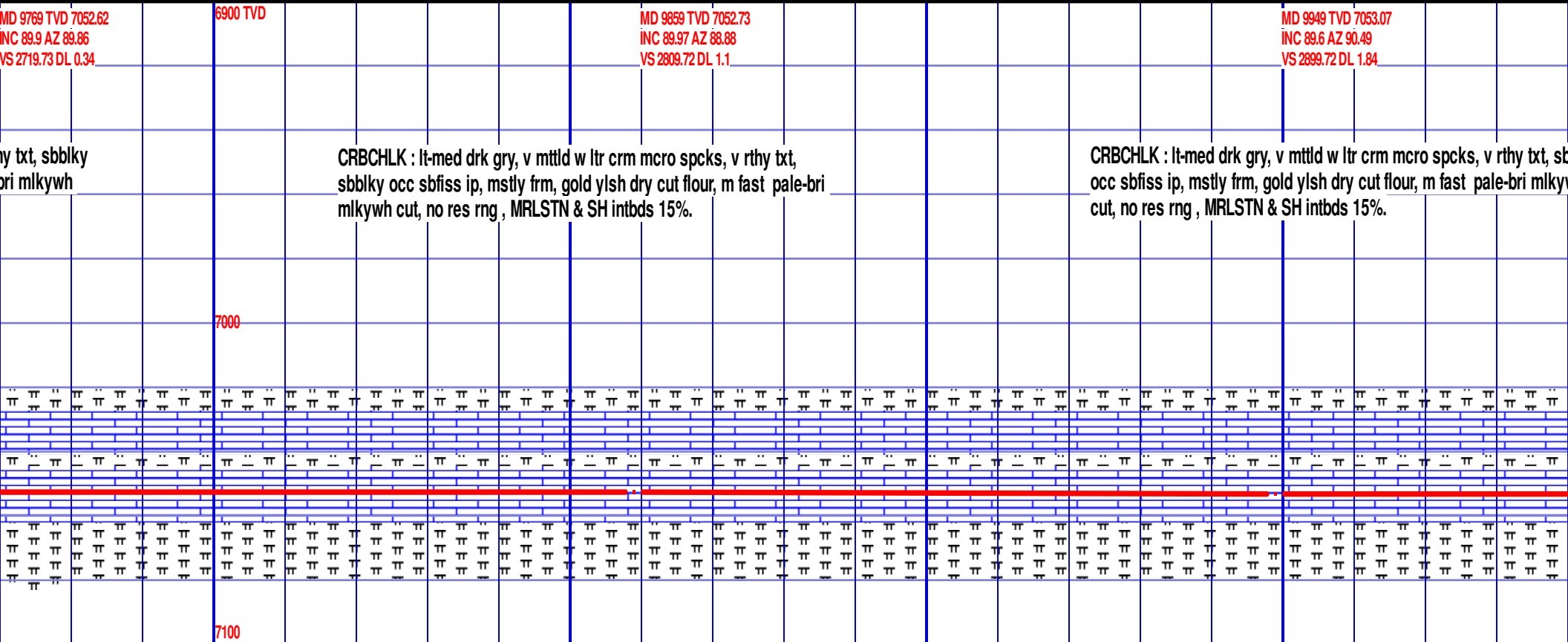
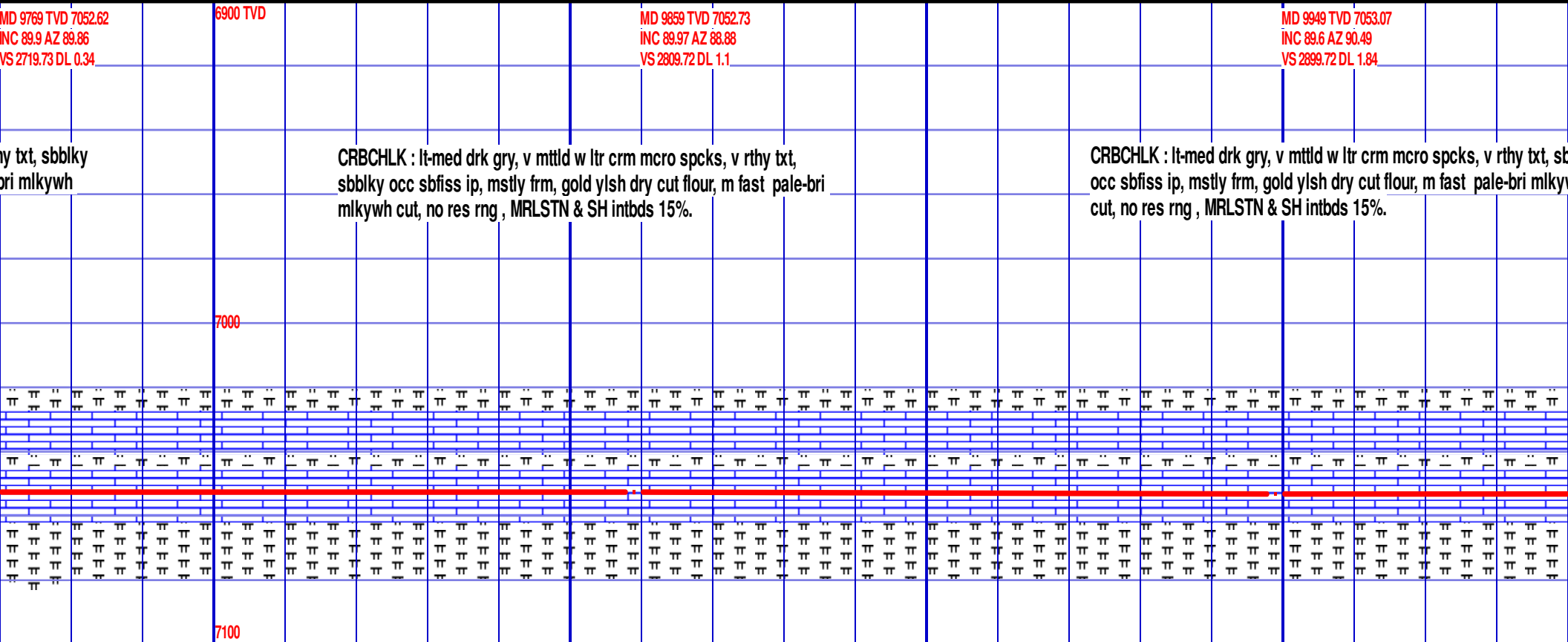
MD 9679 TVD 7052.28
INC 89.66 AZ 90.06
VS 2629.73 DL 0.28

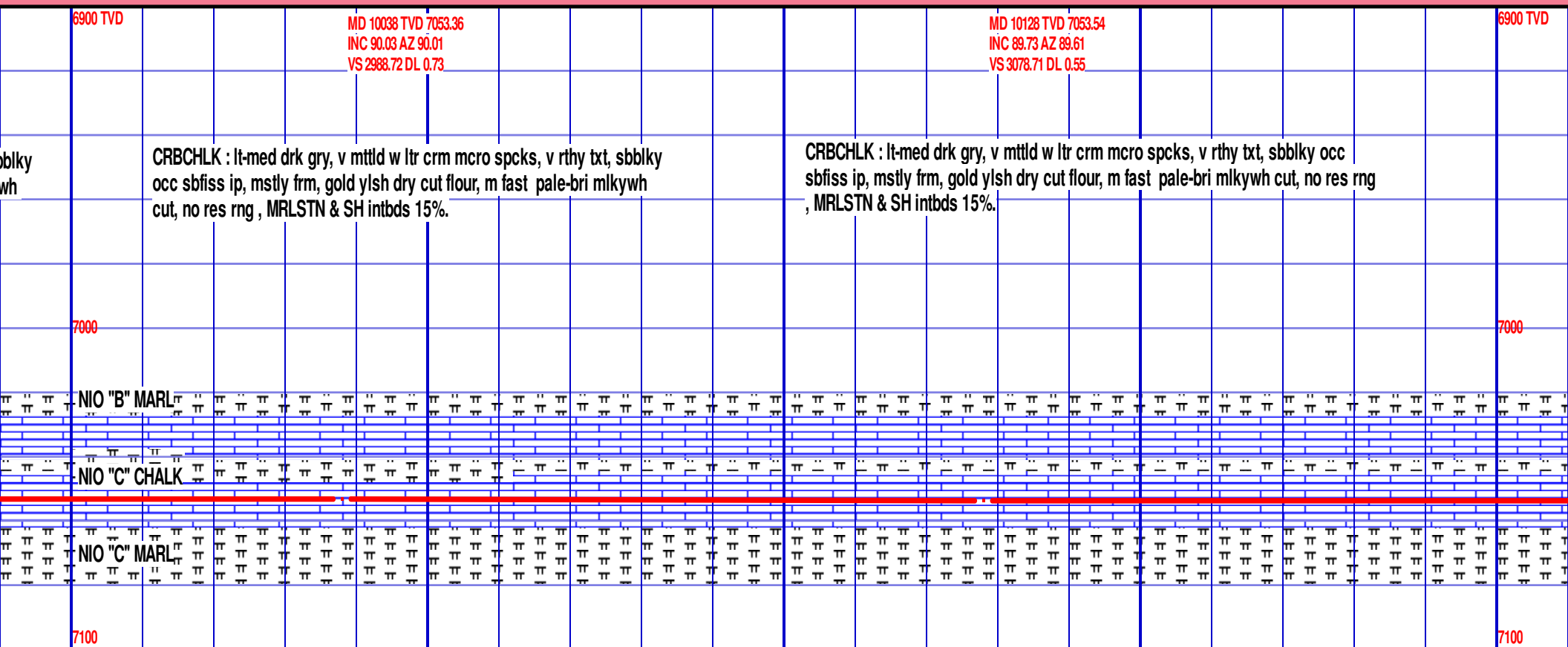
m micro spcks, v rthy txt,
dry cut flour, m fast pale-bri
bds 15%.

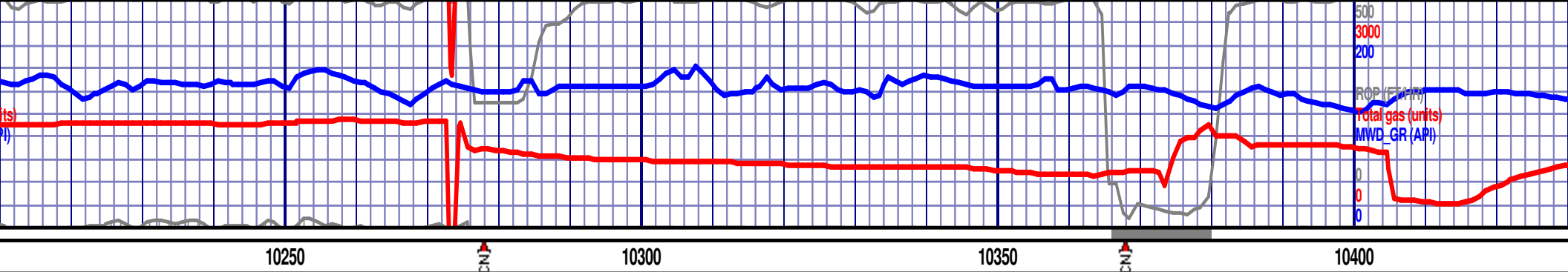
CRBCHLK : lt-med drk gry, v mttld w ltr crm micro spcks, v rthy txt, sbblky
occ sbfiss ip, mstly frm, gold ylsh dry cut flour, m fast pale-bri mlkywh
cut, no res rng , MRLSTN & SH intbds 15%.

CRBCHLK : lt-med drk gry, v mttld w ltr crm micro spcks, v rthy txt, sbblky
occ sbfiss ip, mstly frm, gold ylsh dry cut flour, m fast pale-bri mlkywh
cut, no res rng , MRLSTN & SH intbds 15%.









MD 10218 TVD 7053.72
INC 90.03 AZ 89.29
VS 3168.71 DL 0.49

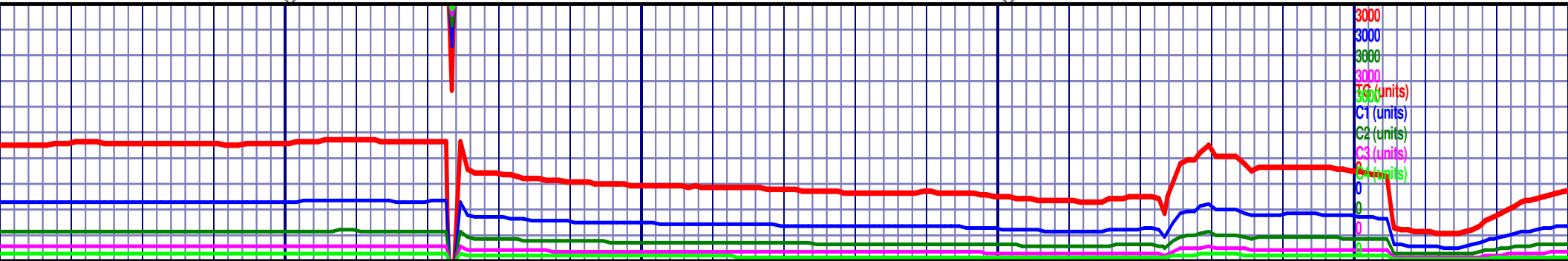
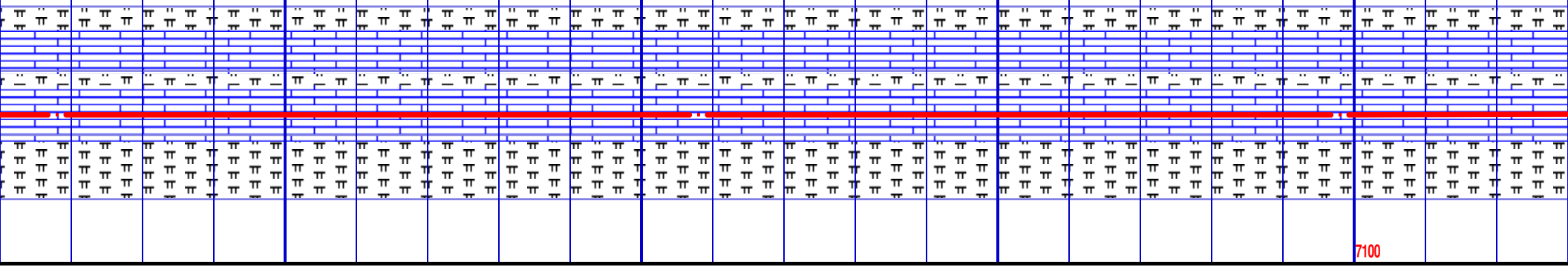
MD 10308 TVD 7053.75
INC 89.93 AZ 88.7
VS 3258.7 DL 0.66

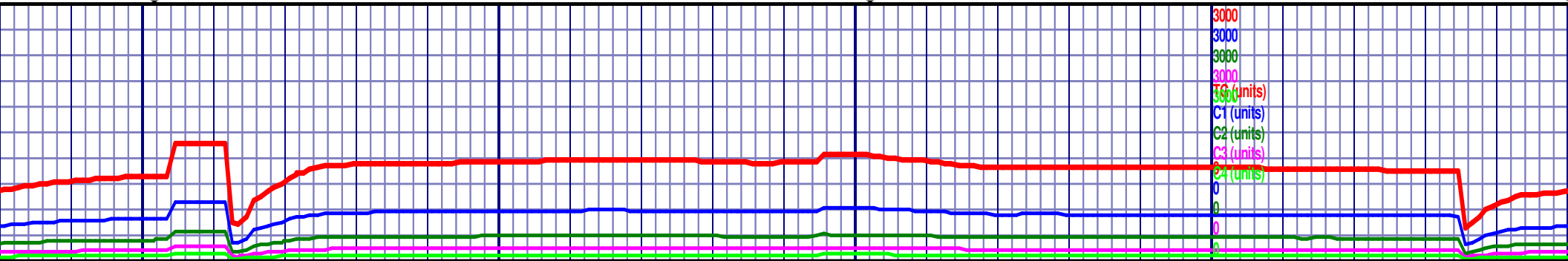
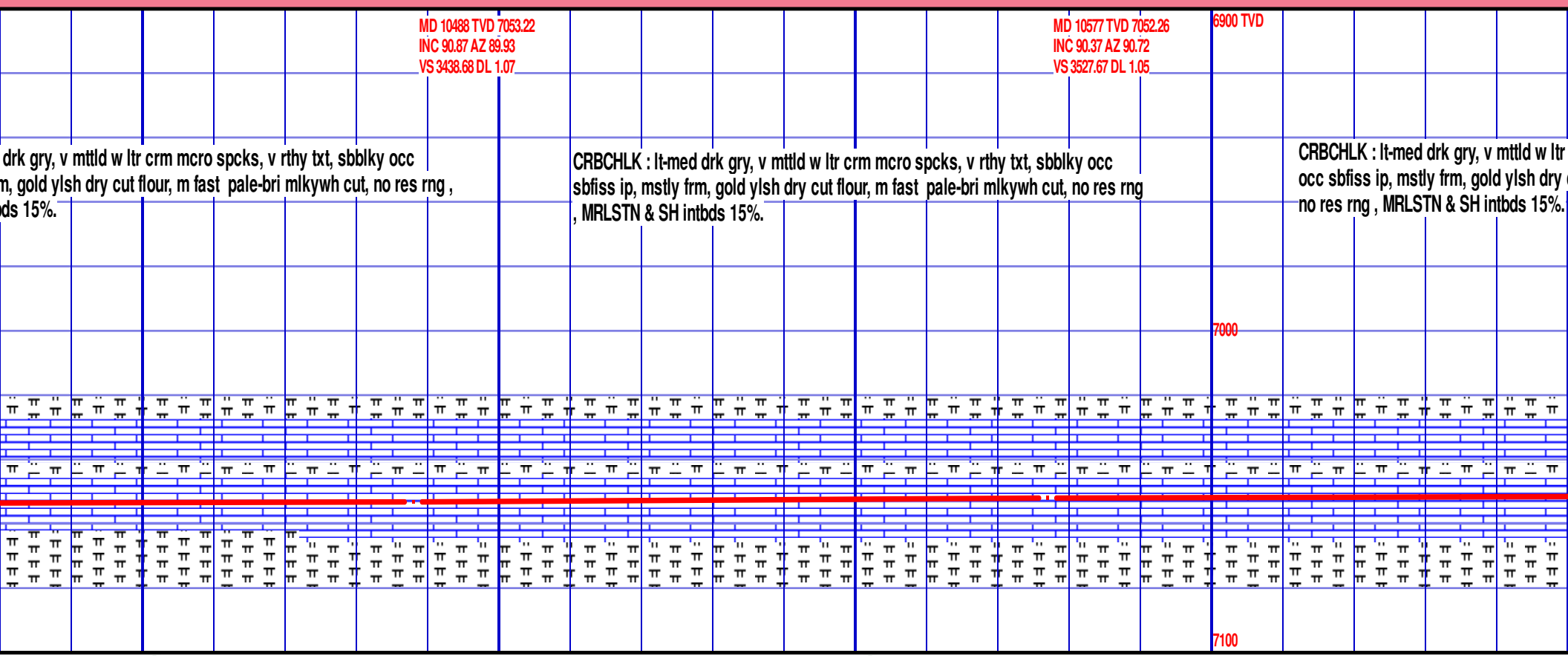
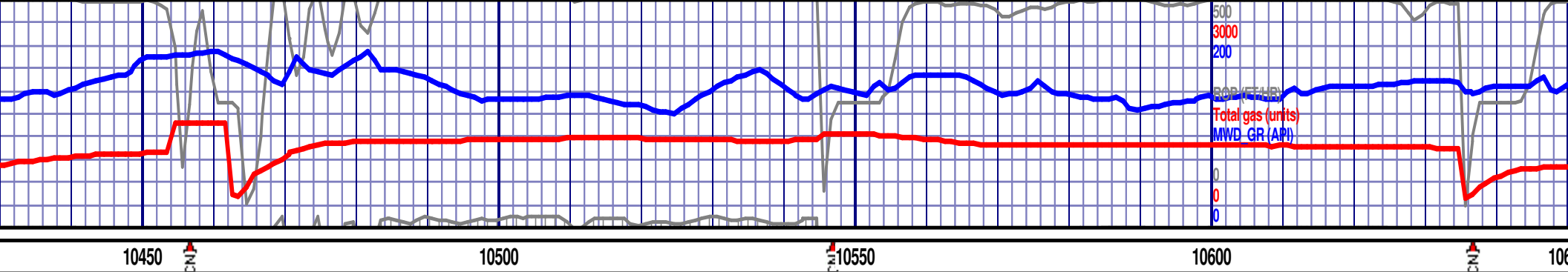
MD 10398 TVD 7053.85
INC 89.93 AZ 89.71
VS 3348.69 DL 1.12

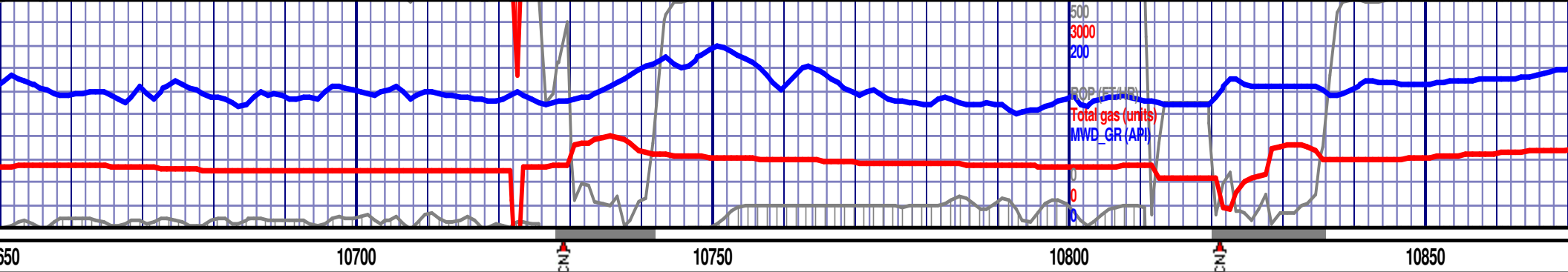
CRBCHLK : lt-med drk gry, v mtld w ltr crm micro spcks, v rthy txt, sbblky occ sbfiss ip, mstly frm, gold ylsh dry cut flour, m fast pale-bri mlkywh cut, no res rng , MRLSTN & SH intbds 15%.

CRBCHLK : lt-med drk gry, v mtld w ltr crm micro spcks, v rthy txt, sbblky occ sbfiss ip, mstly frm, gold ylsh dry cut flour, m fast pale-bri mlkywh cut, no res rng , MRLSTN & SH intbds 15%.

CRBCHLK : lt-med drk gry, v mtld w ltr crm micro spcks, v rthy txt, sbblky occ sbfiss ip, mstly frm, gold ylsh dry cut flour, m fast pale-bri mlkywh cut, no res rng , MRLSTN & SH intbds 15%.







MD 10667 TVD 7051.6
INC 90.47 AZ 92.36
VS 3617.64 DL 1.83

MD 10757 TVD 7052.26
INC 88.69 AZ 92.78
VS 3707.54 DL 2.03

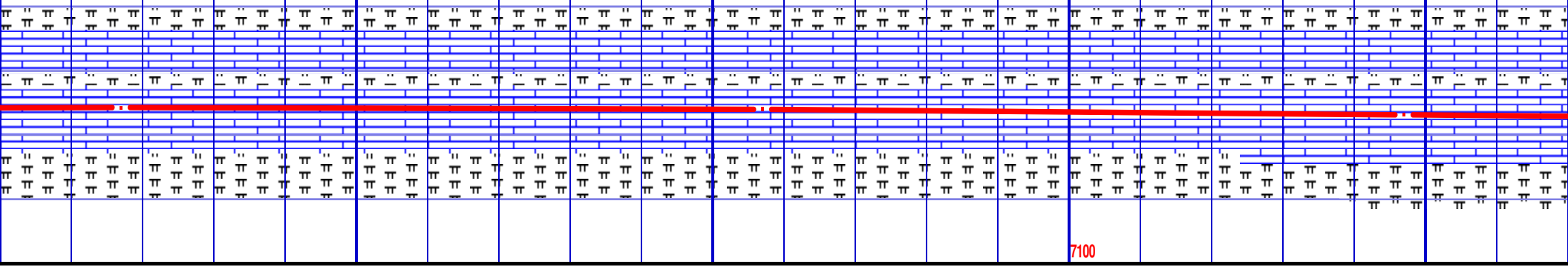
6900 TVD

MD 10847 TVD 7053.95
INC 89.16 AZ 91.82
VS 3797.45 DL 1.19

crm mcro spcks, v rthy txt, sbblky
cut flour, m fast pale-bri mlkywh cut,

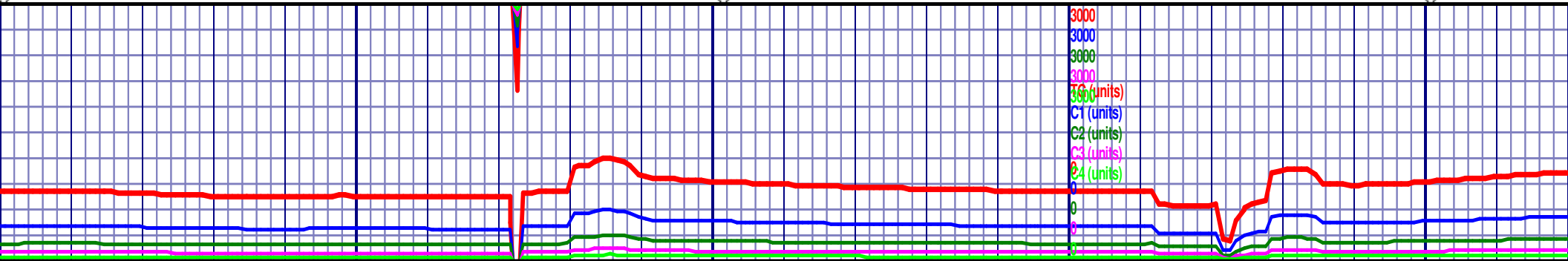
CRBCHLK : lt-med drk gry, v mttld w ltr crm mcro spcks, v rthy txt, sbblky
occ sbfiss ip, mstly frm, gold ylsh dry cut flour, m fast pale-bri mlkywh
cut, no res rng , MRLSTN & SH intbds 15%.

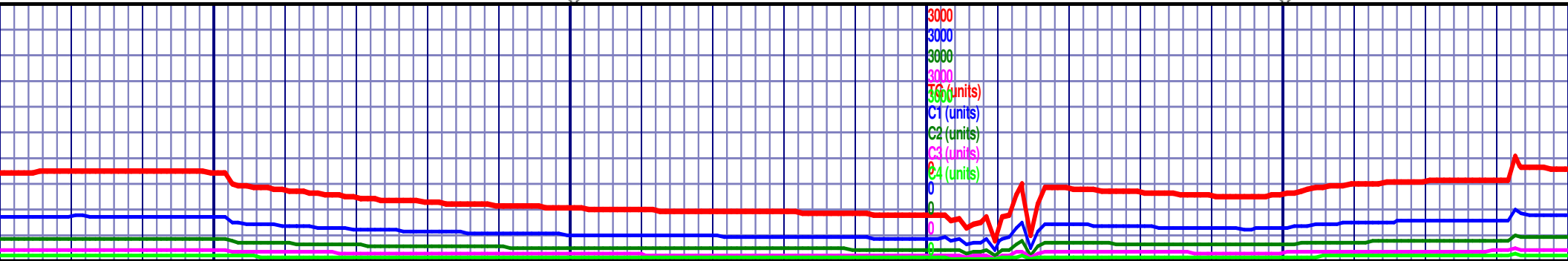
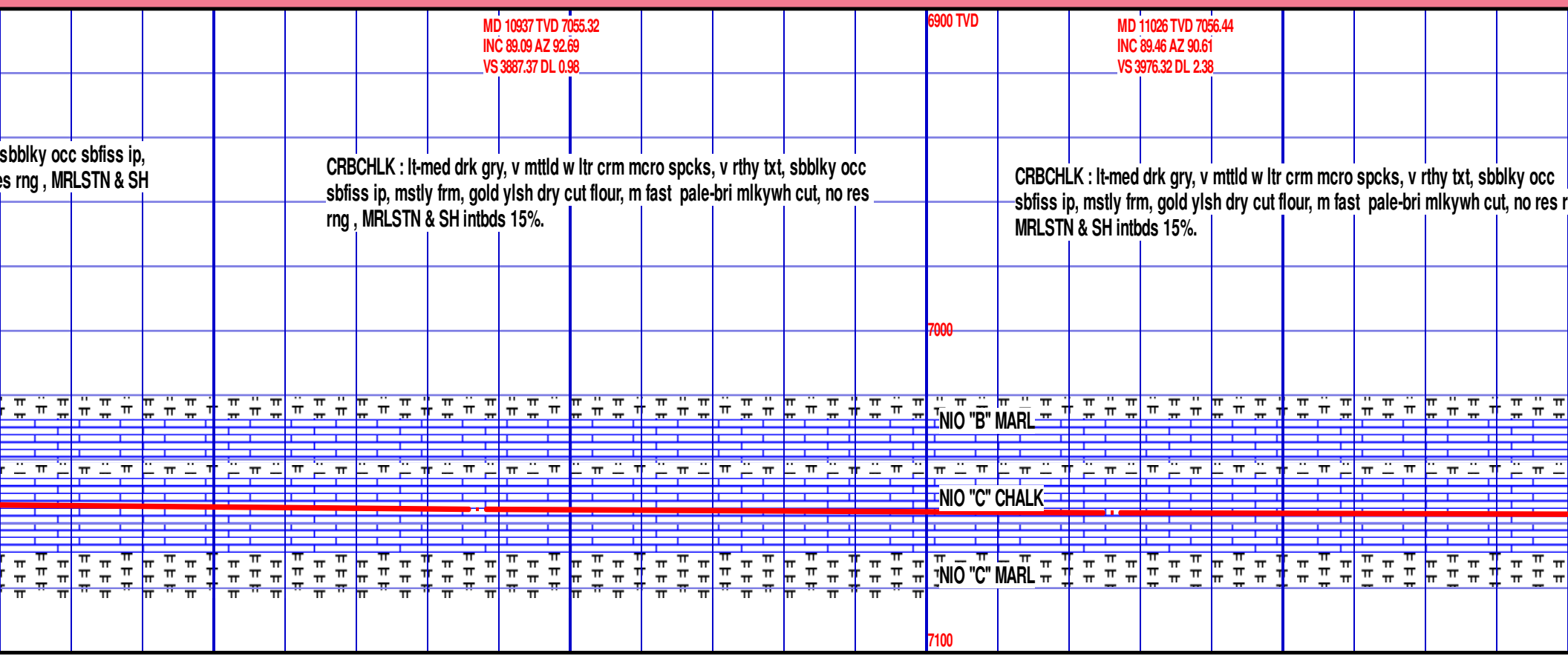
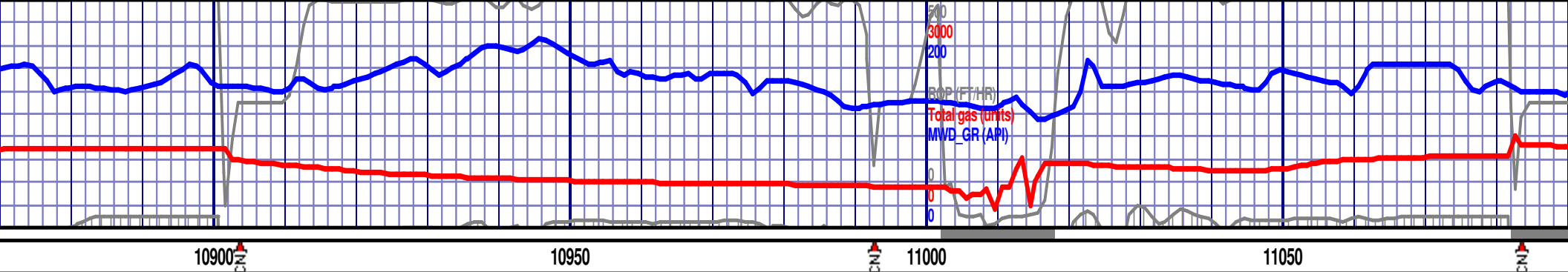
CRBCHLK : lt-med drk gry, v mttld w ltr crm mcro spcks, v rthy txt,
mstly frm, gold ylsh dry cut flour, m fast pale-bri mlkywh cut, no re
intbds 15%.

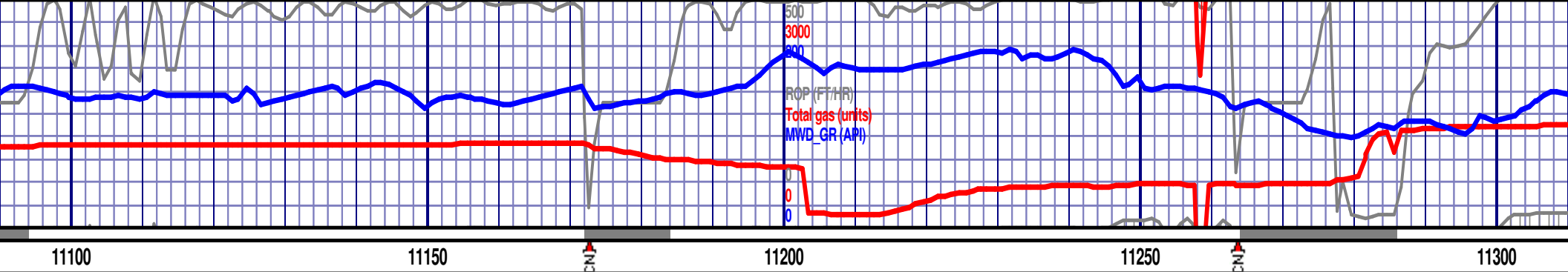


7000

7100







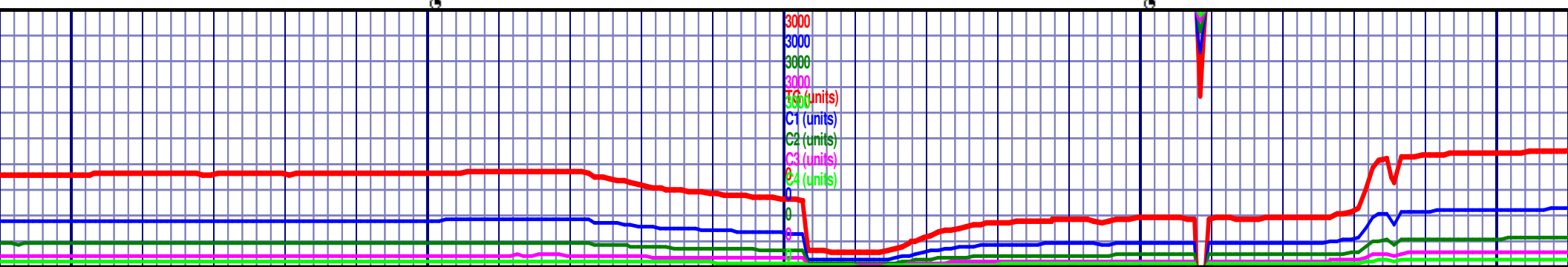
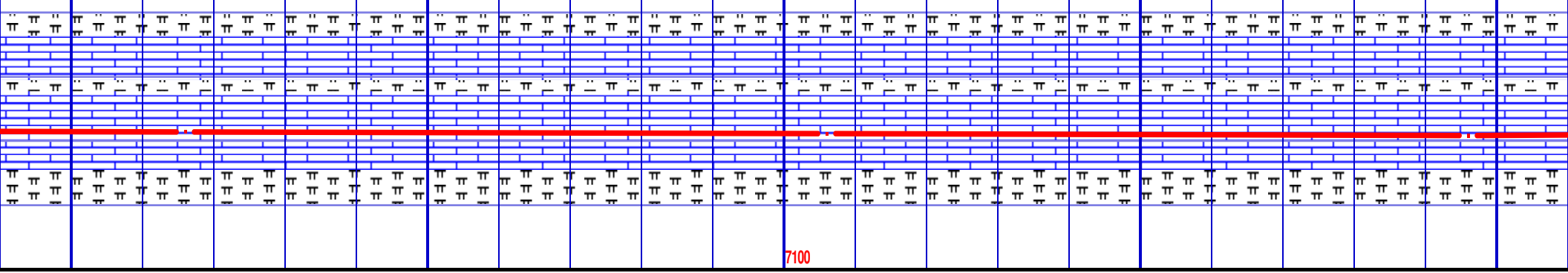
MD 11116 TVD 7057.02
INC 89.8 AZ 89.8
VS 4066.32 DL 0.98

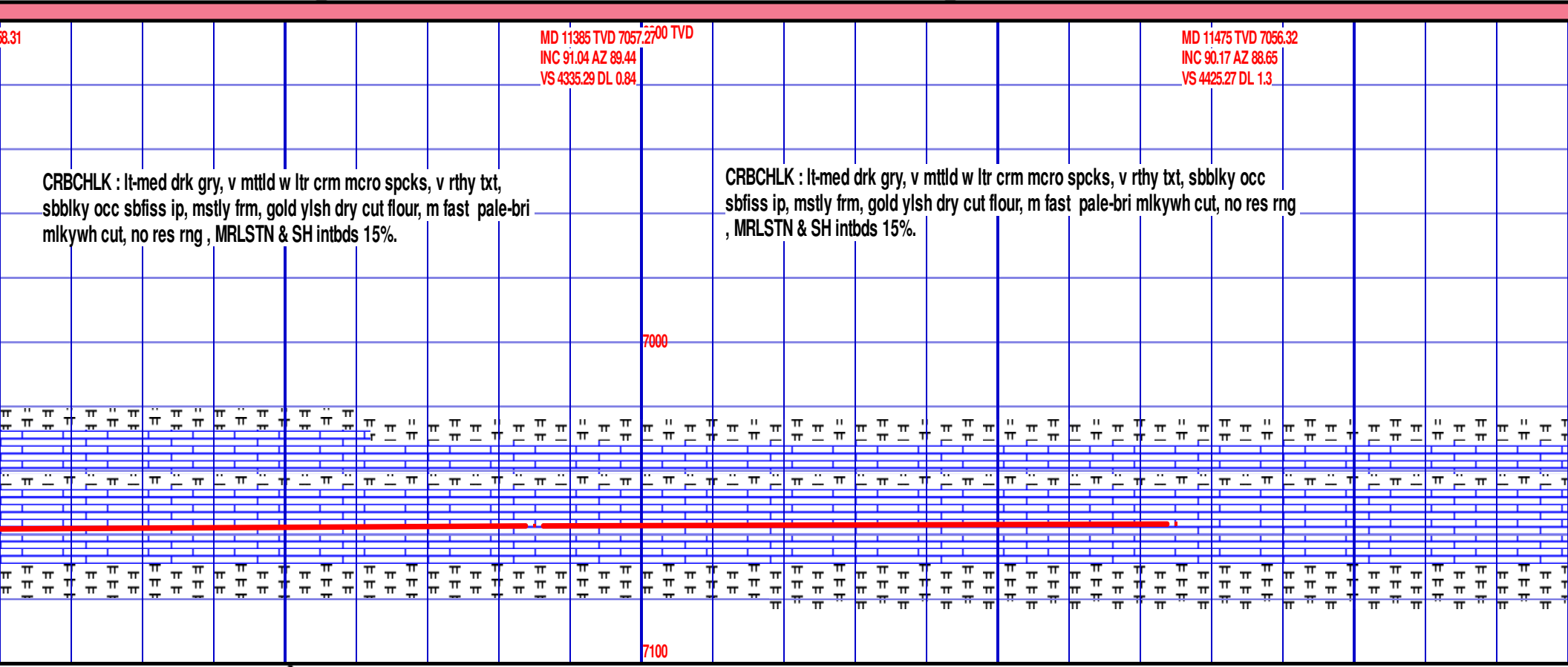
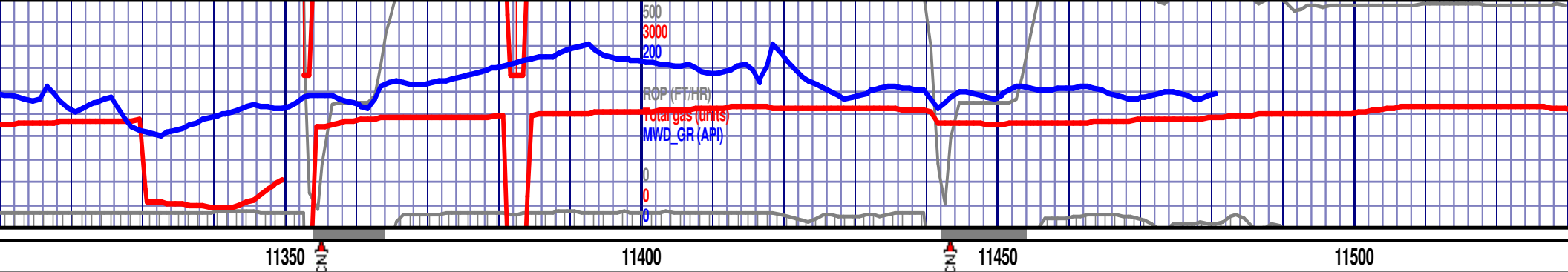
CRBCHLK : lt-med drk gry, v mttld w ltr crm micro spcks, v rthy txt, sbblky
occ sbfiss ip, mstly frm, gold ylsh dry cut flour, m fast pale-bri mlkywh
cut, no res rng , MRLSTN & SH intbds 15%.

6900 TVE MD 11206 TVD 7057.86
INC 89.13 AZ 89.29
VS 4156.31 DL 0.94

CRBCHLK : lt-med drk gry, v mttld w ltr crm micro spcks, v rthy txt, sbblky
occ sbfiss ip, mstly frm, gold ylsh dry cut flour, m fast pale-bri mlkywh cut,
no res rng , MRLSTN & SH intbds 15%.

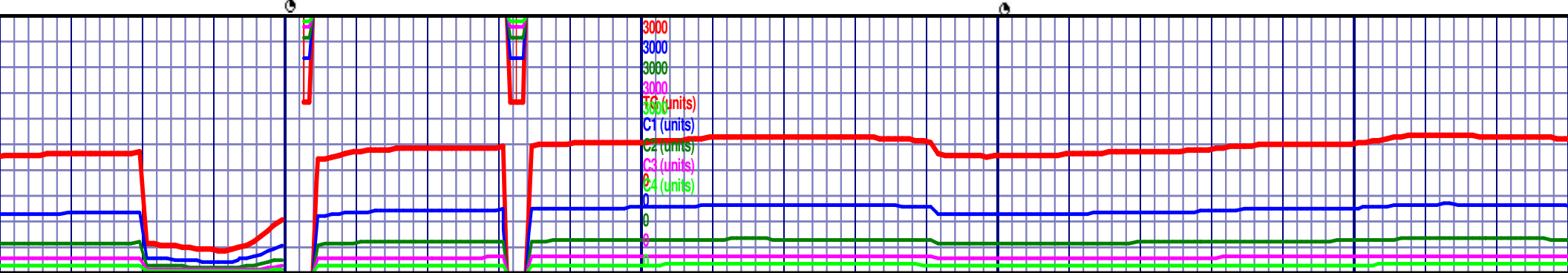
MD 11296 TVD 7057.86
INC 90.3 AZ 89.56
VS 4246.3 DL 1.34

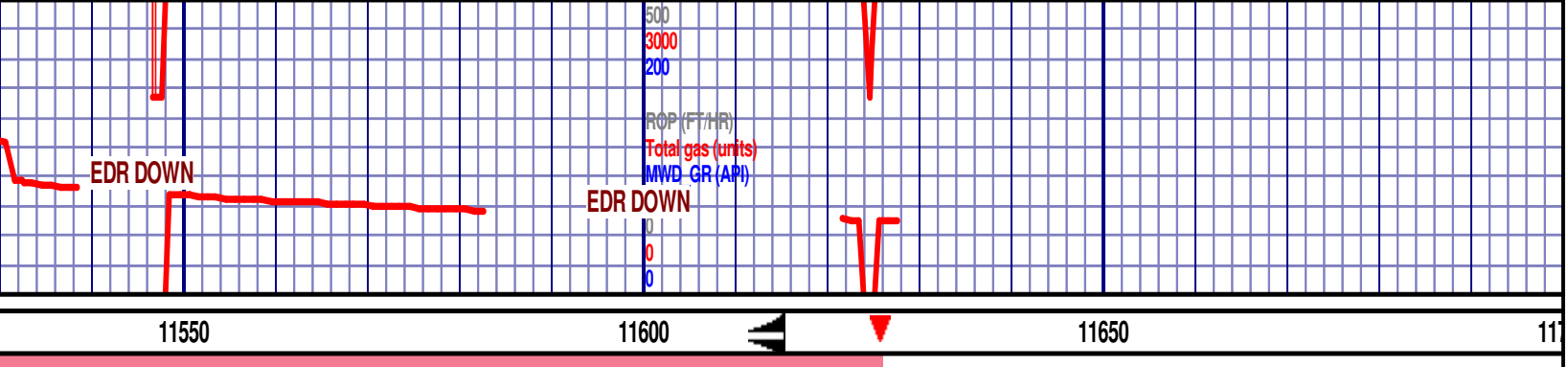




CRBCHLK : lt-med drk gry, v mtld w ltr crm mcro spcks, v rthy txt, sbblky occ sbfiss ip, mstly frm, gold ylsh dry cut flour, m fast pale-bri mlkywh cut, no res rng , MRLSTN & SH intbds 15%.

CRBCHLK : lt-med drk gry, v mtld w ltr crm mcro spcks, v rthy txt, sbblky occ sbfiss ip, mstly frm, gold ylsh dry cut flour, m fast pale-bri mlkywh cut, no res rng , MRLSTN & SH intbds 15%.





CRBCHLK : lt-med drk gry, v mttld w ltr crm micro spcks, v rthy txt, sbblky occ
sbfiss ip, mstly frm, gold ylsd dry cut flour, m fast pale-bri mlkywh cut, no res rng ,
MRLSTN & SH intbds 15%.

FORMATION TOP'S (FT)

MD	TVD	SSD
6912'	6802'	-1789'
6976'	6850'	-1837'
7013'	6874'	-1861'
7144'	6953'	-1940'
7172'	6963'	-1950'
7347'	7028'	-2015'

TD AT 11629'
ON JAN 23/16,
@ 1950 HR.

THANK YOU
GOOLSBY BROTHERS AND ASSOC. INC

