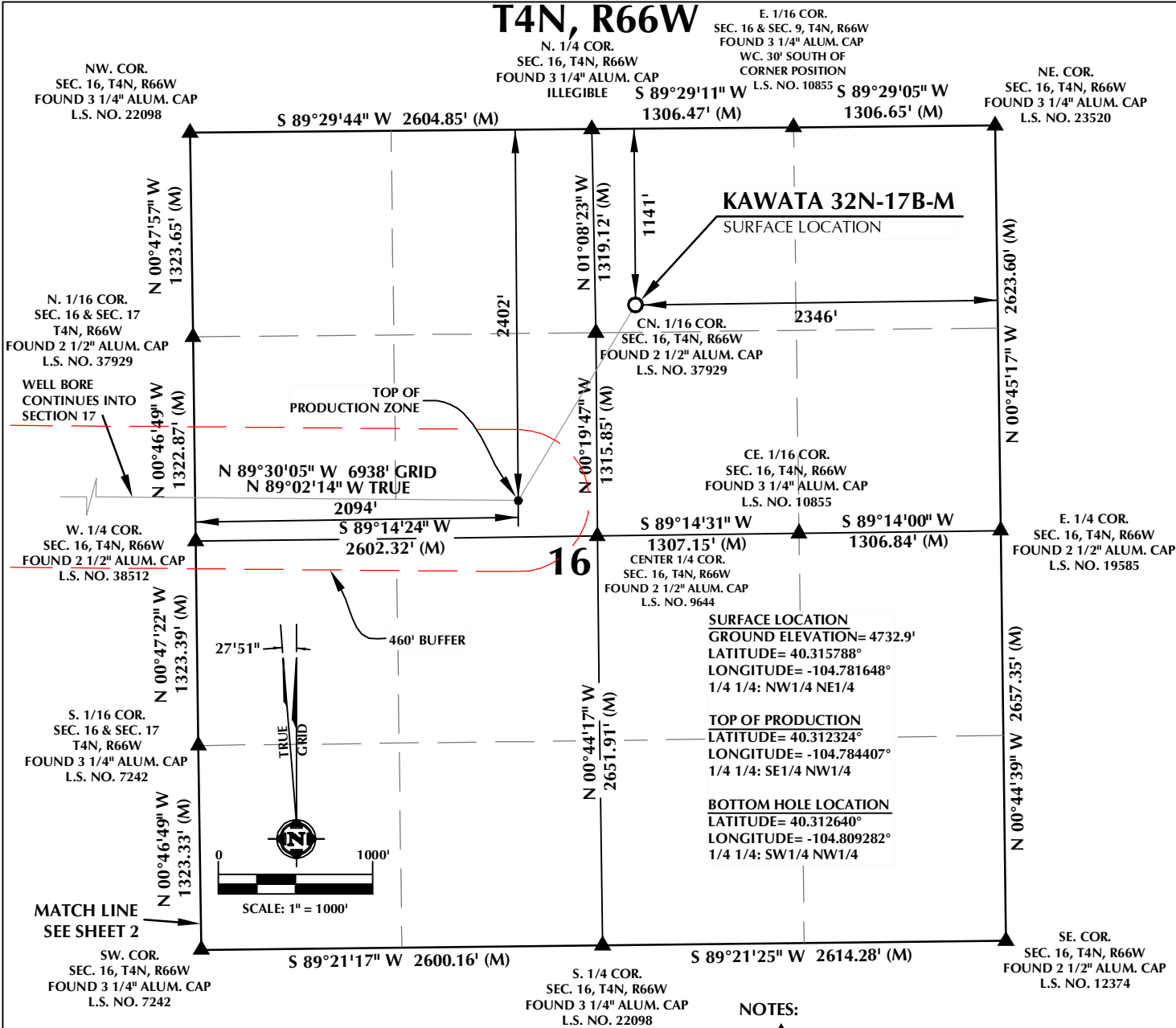


T4N, R66W



CERTIFICATE OF SURVEYOR:

THIS IS TO CERTIFY THAT THE ABOVE PLAT WAS PREPARED FROM FIELD NOTES OF ACTUAL SURVEY MADE BY ME OR UNDER MY SUPERVISION AND THAT THE SAME ARE TRUE AND CORRECT TO THE BEST OF MY KNOWLEDGE AND BELIEF. THIS CERTIFICATE DOES NOT REPRESENT A LAND SURVEY PLAT OR IMPROVEMENT SURVEY PLAT AS DEFINED BY C.R.S. 38-51-302 AND CANNOT BE RELIED UPON TO DETERMINE OWNERSHIP.

JOHN R. SLAUGH
PROFESSIONAL LAND SURVEYOR
COLORADO REGISTRATION NUMBER 38230
8/1/16

NOTICE:
ACCORDING TO COLORADO STATE LAW YOU MUST COMMENCE ANY LEGAL ACTION BASED UPON ANY DEFECT IN THIS SURVEY WITHIN THREE YEARS AFTER YOU FIRST DISCOVER SUCH DEFECT. IN NO EVENT MAY ANY ACTION BASED UPON ANY DEFECT IN THIS SURVEY BE COMMENCED MORE THAN TEN YEARS FROM THE DATE ON THE CERTIFICATION SHOWN HEREON.

WELL DISTANCES:

BUILDING: ±992' NW
BUILDING UNIT: ±1120' NW
PUBLIC ROAD: ±1132' N
ABOVE GROUND UTILITY: ±296' W
RAILROAD: 5280'+
PROPERTY LINE: ±259' W
HIGH OCCUPANCY BUILDING UNIT: 5280'+
DESIGNATED OUTSIDE ACTIVITY AREA: 5280'+

NOTES:

- ▲ INDICATES SECTION CORNER
- INDICATES CALCULATED CORNER
- DRAWING LATITUDE AND LONGITUDE COORDINATES ARE NAD 83 (2011)(EPOCH:2010)
- ELEVATION BASED ON NAVD88 (GEOID12B)
- BASIS OF BEARING DERIVED FROM COLORADO COORDINATE SYSTEM OF 1983 NORTH ZONE.
- ALL MEASURED DISTANCES ARE GRID.
- COMBINED SCALE FACTOR: .99973444 CALCULATED FROM THE N. 1/4 CORNER OF SECTION 16, T4N, R66W
- OPERATOR: ROB WILSON / PDOP = 2.4
- SEE ADDENDUM TO WELL LOCATION CERTIFICATE FOR EXISTING IMPROVEMENTS WITHIN 500' OF THE WELL PAD.
- WELL FOOTAGES ARE MEASURED AT RIGHT ANGLES TO THE SECTION LINES.
- THE BOTTOM OF HOLE BEARS N89°30'05"W, 6938' FROM THE TOP OF PRODUCTION ZONE.

WELL PAD - KAWATA 21-16

KAWATA 32N-17B-M
WELL LOCATION CERTIFICATE
1141' FNL & 2346' FEL NWNE (SURFACE)
2402' FNL & 2094' FWL SENW (TOP OF PRODUCTION)
LOCATED IN SECTION 16
2402' FNL & 510' FWL SWNW (BOTTOM)
LOCATED IN SECTION 17
T4N, R66W, 6TH P.M.
WELD COUNTY, COLORADO



1625 Broadway, Suite 300
Denver, Colorado 80202



CONSULTING, LLC

SHERIDAN OFFICE
1095 Saberton Avenue
Sheridan, Wyoming 82801
Phone 307-674-0609

LOVELAND OFFICE
1635 Foxtrail Drive, Suite 204
Loveland, Colorado 80538
Phone 970-776-4331

| | | | | |
|---------------|---------|----------------|--------|-----------|
| DRAFTED BY: | LMO | CHECKED BY: | JRS | SHEET NO: |
| DATE DRAFTED: | 6/29/16 | DATE SURVEYED: | 6/3/16 | 1 |
| REVISED: | 8/1/16 | FILE NAME: | 16-45 | 1 OF 2 |

14N, R66W

NW COR.
SEC. 17, T4N, R66W
FOUND 3 1/4" ALUM. CAP
L.S. NO. 13155

W. 1/16 COR.
SEC. 17 & SEC. 8, T4N, R66W
FOUND 3 1/4" ALUM. CAP
L.S. NO. 22098

N. 1/4 COR.
SEC. 17, T4N, R66W
FOUND 3 1/4" ALUM. CAP
L.S. NO. 13155

NE COR.
SEC. 17, T4N, R66W
FOUND 3 1/4" ALUM. CAP
L.S. NO. 22098

N. 1/16 COR.
SEC. 16 & SEC. 17
T4N, R66W
FOUND 2 1/2" ALUM. CAP
L.S. NO. 37929

E. 1/4 COR.
SEC. 17, T4N, R66W
FOUND 2 1/2" ALUM. CAP
L.S. NO. 38512

S. 1/16 COR.
SEC. 16 & SEC. 17
T4N, R66W
FOUND 3 1/4" ALUM. CAP
L.S. NO. 7242

SW COR.
SEC. 17, T4N, R66W
FOUND 3 1/4" ALUM. CAP
L.S. NO. 7242

S. 1/4 COR.
SEC. 17, T4N, R66W
FOUND 3 1/4" ALUM. CAP
L.S. NO. 34995

SE COR.
SEC. 17, T4N, R66W
FOUND 3 1/4" ALUM. CAP
L.S. NO. 7242

N 88°31'16" W 1342.86' (M)

N 88°32'15" W 1343.00' (M)

N 89°27'00" W 2712.21' (M)

N 01°48'37" W 1381.46' (M)

N 01°48'23" W 1381.64' (M)

N 00°39'01" W 1326.86' (M)

N 00°39'26" W 1326.95' (M)

N 01°06'24" W 2683.14' (C)

N 01°06'24" W 1324.87' (C)

N 01°07'30" W 1325.45' (M)

N 00°46'49" W 1322.87' (M)

N 00°47'22" W 1323.39' (M)

N 00°46'49" W 1323.33' (M)

N 00°47'57" W 1323.65' (M)

S 89°46'50" W 2649.63' (C)

S 89°42'27" W 2681.41' (M)

S 89°30'05" W 6938' GRID
N 89°02'14" W TRUE

S 89°46'50" W 2696.75' (C)

S 89°42'01" W 2670.98' (M)

2402'

510'

BOTTOM OF HOLE

460' BUFFER

27'51"

TRUE GRID

SCALE: 1" = 1000'

MATCH LINE
SEE SHEET 1

NOTES:

17

SURFACE LOCATION
GROUND ELEVATION=4732.9'
LATITUDE= 40.315788°
LONGITUDE= -104.781648°
1/4 1/4: NW1/4 NE1/4

TOP OF PRODUCTION
LATITUDE= 40.312324°
LONGITUDE= -104.784407°
1/4 1/4: SE1/4 NW1/4

BOTTOM HOLE LOCATION
LATITUDE= 40.312640°
LONGITUDE= -104.809282°
1/4 1/4: SW1/4 NW1/4

THIS IS TO CERTIFY THAT THE ABOVE PLAT WAS PREPARED FROM FIELD NOTES OF ACTUAL SURVEY MADE BY ME OR UNDER MY SUPERVISION AND THAT THE SAME ARE TRUE AND CORRECT TO THE BEST OF MY KNOWLEDGE AND BELIEF. THIS CERTIFICATE DOES NOT REPRESENT A LAND SURVEY PLAT OR IMPROVEMENT SURVEY PLAT AS DEFINED BY G.S. 38-51-02 AND CANNOT BE RELIED UPON TO DETERMINE OWNERSHIP.

JOHN R. SLAUGH
PROFESSIONAL LAND SURVEYOR
COLORADO REGISTRATION NUMBER 18230

NOTICE: ACCORDING TO COLORADO STATE LAW YOU MUST COMMENCE ANY LEGAL ACTION BASED UPON ANY DEFECT IN THIS SURVEY WITHIN THREE YEARS AFTER YOU FIRST DISCOVER SUCH DEFECT. IN NO EVENT MAY ANY ACTION BASED UPON ANY DEFECT IN THIS SURVEY BE COMMENCED MORE THAN TEN YEARS FROM THE DATE ON THE CERTIFICATION SHOWN HEREON.

BUILDING: ±992' NW
BUILDING UNIT: ±1120' NW
PUBLIC ROAD: ±1132' N
ABOVE GROUND UTILITY: ±296' W
RAILROAD: 5280'+
PROPERTY LINE: ±259' W
HIGH OCCUPANCY BUILDING UNIT: 5280'+
DESIGNATED OUTSIDE ACTIVITY AREA: 5280'+

1. ▲ INDICATES SECTION CORNER

2. ● INDICATES CALCULATED CORNER

3. DRAWING LATITUDE AND LONGITUDE COORDINATES
ARE NAD 83 (2011)(EPOCH:2010)

4. ELEVATION BASED ON NAVD88 (GEOID12B)

5. BASIS OF BEARING DERIVED FROM COLORADO COORDINATE
SYSTEM OF 1983 NORTH ZONE.

6. ALL MEASURED DISTANCES ARE GRID.
COMBINED SCALE FACTOR: .99973444 CALCULATED FROM
THE N. 1/4 CORNER OF SECTION 16, T4N, R66W

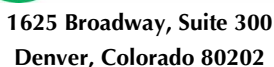
7. OPERATOR: ROB WILSON / PDOP = 2.4

8. SEE ADDENDUM TO WELL LOCATION CERTIFICATE FOR
EXISTING IMPROVEMENTS WITHIN 500' OF THE WELL PAD.

9. WELL FOOTAGES ARE MEASURED AT RIGHT ANGLES TO THE
SECTION LINES.

10. THE BOTTOM OF HOLE BEARS N89°30'05"W, 6938' FROM THE
TOP OF PRODUCTION ZONE.

KAWATA 32N-17B-M
WELL LOCATION CERTIFICATE
1141' FNL & 2346' FEL NWNE (SURFACE)
2402' FNL & 2094' FWL SENW (TOP OF PRODUCTION)
LOCATED IN SECTION 16
2402' FNL & 510' FWL SWNW (BOTTOM)
LOCATED IN SECTION 17
T4N, R66W, 6TH P.M.
WELD COUNTY, COLORADO



SHERIDAN OFFICE
1095 Saberton Avenue
Sheridan, Wyoming 82801
Phone 307-674-0609

LOVELAND OFFICE
1635 Foxtrail Drive, Suite 204
Loveland, Colorado 80538
Phone 970-776-4331

| | | | | |
|-----------------------|--|-----------------------|--|---|
| DRAFTED BY: LMO | | CHECKED BY: JRS | | SHEET NO: 2 2 OF 2 |
| DATE DRAFTED: 6/29/16 | | DATE SURVEYED: 6/3/16 | | |
| REVISED: 8/1/16 | | FILE NAME: 16-45 | | |