

HALLIBURTON

iCem[®] Service

SYNERGY RESOURCES CORPORATION

Date: Thursday, February 25, 2016

SRC VISTA 43-2N-A

Production

Job Date: Wednesday, February 24, 2016

Sincerely,
Lauren Roberts

Legal Notice

Warning Disclaimer

Although the information contained in this report is based on sound engineering practices, the copyright owner(s) does (do) not accept any responsibility whatsoever, in negligence or otherwise, for any loss or damage arising from the possession or use of the report whether in terms of correctness or otherwise. The application, therefore, by the user of this report or any part thereof, is solely at the user's own risk.

Limitations of Liability

Except as expressly set forth herein, there are no representations or warranties by Halliburton, express or implied, including implied warranties of merchantability and/or fitness for a particular purpose. In no event will Halliburton or its suppliers be liable for consequential, incidental, special, punitive or exemplary damages (including, without limitation, loss of data, profits, use of hardware, or software). Customer accepts full responsibility for any investment made based on results from the Software. Any interpretations, analyses or modeling of any data, including, but not limited to Customer data, and any recommendation or decisions based upon such interpretations, analyses or modeling are opinions based upon inferences from measurements and empirical relationships and assumptions, which inferences and assumptions are not infallible, and with respect to which professional may differ. Accordingly, Halliburton cannot and does not warrant the accuracy, correctness or completeness of any such interpretation, recommendation, modeling or other products of the Software Product. As such, any interpretation, recommendation or modeling resulting from the Software for the purpose of any drilling, well treatment, production or financial decision will be at the sole risk of Customer. Under no circumstances will Halliburton or its suppliers be liable for any damages.

Table of Contents

1.0 Cementing Job Summary 4

 1.1 Executive Summary4

2.0 Real-Time Job Summary 7

 2.1 Job Event Log7

1.0 Cementing Job Summary

1.1 Executive Summary

Halliburton appreciates the opportunity to perform the cementing services on the **SRC Vista 43-2N-A** cement **Production** casing job. A pre-job safety meeting was held before the job where details of the job were discussed, potential safety hazards were reviewed, and environmental compliance procedures were outlined.

18 bbls of cement returned to surface.

Halliburton maintains a continuous quality improvement process and appreciates any comments or suggestions that you may have. Halliburton again thanks you for the opportunity to perform service work on this well. We hope to be your solutions provider for future projects.

Respectfully,

Halliburton [Ft. Lupton]

HALLIBURTON

Cementing Job Summary

The Road to Excellence Starts with Safety

Sold To #: 359915	Ship To #: 3701195	Quote #:	Sales Order #: 0903138876							
Customer: SYNERGY RESOURCES CORPORATION		Customer Rep: LARRY								
Well Name: SRC VISTA	Well #: 43-2N-A	API/UWI #: 05-123-41060-00								
Field: WATTENBERG	City (SAP): JOHNSTOWN	County/Parish: WELD	State: COLORADO							
Legal Description: NW SW-2 4N-68W-2203FSL-254FWL										
Contractor: PRECISION DRLG		Rig/Platform Name/Num: PRECISION 462								
Job BOM: 7523										
Well Type: HORIZONTAL OIL										
Sales Person: HALAMERICA\HX38199		Srcv Supervisor: Joseph Scileppi								
Job										
Formation Name										
Formation Depth (MD)	Top	0	Bottom 11410							
Form Type	BHST									
Job depth MD	11393ft	Job Depth TVD	6685							
Water Depth	Wk Ht Above Floor									
Perforation Depth (MD)	From	To								
Well Data										
Description	New / Used	Size in	ID in	Weight lbm/ft	Thread	Grade	Top MD ft	Bottom MD ft	Top TVD ft	Bottom TVD ft
Casing		9.625	8.921	36	LTC	J-55	0	1621		1621
Casing		5.5	4.892	17		P-110	0	11393	0	6685
Open Hole Section			8.5				1621	11410	1618	6685
Tools and Accessories										
Type	Size in	Qty	Make	Depth ft	Type	Size in	Qty	Make		
Guide Shoe	5.5			11393	Top Plug	5.5		HES		
Float Shoe	5.5				Bottom Plug	5.5		HES		
Float Collar	5.5				SSR plug set	5.5		HES		
Insert Float	5.5				Plug Container	5.5		HES		
Stage Tool	5.5				Centralizers	5.5		HES		
Fluid Data										
Stage/Plug #: 1										
Fluid #	Stage Type	Fluid Name	Qty	Qty UoM	Mixing Density lbm/gal	Yield ft ³ /sack	Mix Fluid Gal	Rate bbl/min	Total Mix Fluid Gal	
1	Tuned Spacer III	Tuned Spacer III	40	bbl	11.5	3.86		6		
145.18 lbm/bbl		BARITE, BULK (100003681)								
36.09 gal/bbl		FRESH WATER								
Fluid #	Stage Type	Fluid Name	Qty	Qty UoM	Mixing Density lbm/gal	Yield ft ³ /sack	Mix Fluid Gal	Rate bbl/min	Total Mix Fluid Gal	

last updated on 2/24/2016 9:43:31 PM

Page 1 of 3

iCem® Service

(v. 4.2.393)

Created: Thursday, February 25, 2016

HALLIBURTON

Cementing Job Summary

2	Lead ElastiCem	ELASTICEM (TM) SYSTEM	1000	sack	13.2	1.57		6	7.51
7.51 Gal		FRESH WATER							
Fluid #	Stage Type	Fluid Name	Qty	Qty UoM	Mixing Density lbm/gal	Yield ft3/sack	Mix Fluid Gal	Rate bbl/min	Total Mix Fluid Gal
3	Tail EconoCem	ECONOCEM (TM) SYSTEM	760	sack	13.5	1.65		4	7.86
0.35 %		HR-5, 50 LB SK (100005050)							
Fluid #	Stage Type	Fluid Name	Qty	Qty UoM	Mixing Density lbm/gal	Yield ft3/sack	Mix Fluid Gal	Rate bbl/min	Total Mix Fluid Gal
4	MMCR Displacement	MMCR Displacement	40	bbl	8.34				
0.50 gal/bbl		MICRO MATRIX CEMENT RETARDER, 5 GAL PAIL (100003781)							
Fluid #	Stage Type	Fluid Name	Qty	Qty UoM	Mixing Density lbm/gal	Yield ft3/sack	Mix Fluid Gal	Rate bbl/min	Total Mix Fluid Gal
5	Water	Water	262	bbl	8.33				
Cement Left In Pipe Amount 93 ft Reason Shoe Joint									
Mix Water: pH ##		Mix Water: ## ppm Chloride:		Mix Water Temperature: ## °F °C					
Cement Temperature: ## °F °C		Plug Displaced by: ## lb/gal kg/m3 XXXX				Disp. Temperature: ## °F °C			
Plug Bumped? Yes/No		Bump Pressure: #### psi MPa				Floats Held? Yes/No			
Cement Returns: ## bbl m3		Returns Density: ## lb/gal kg/m3				Returns Temperature: ## °F °C			
Comment GOT 18 BBLS OF CMT TO SURFACE									

iCem® Service

(v. 4.2.393)

Created: Thursday, February 25, 2016

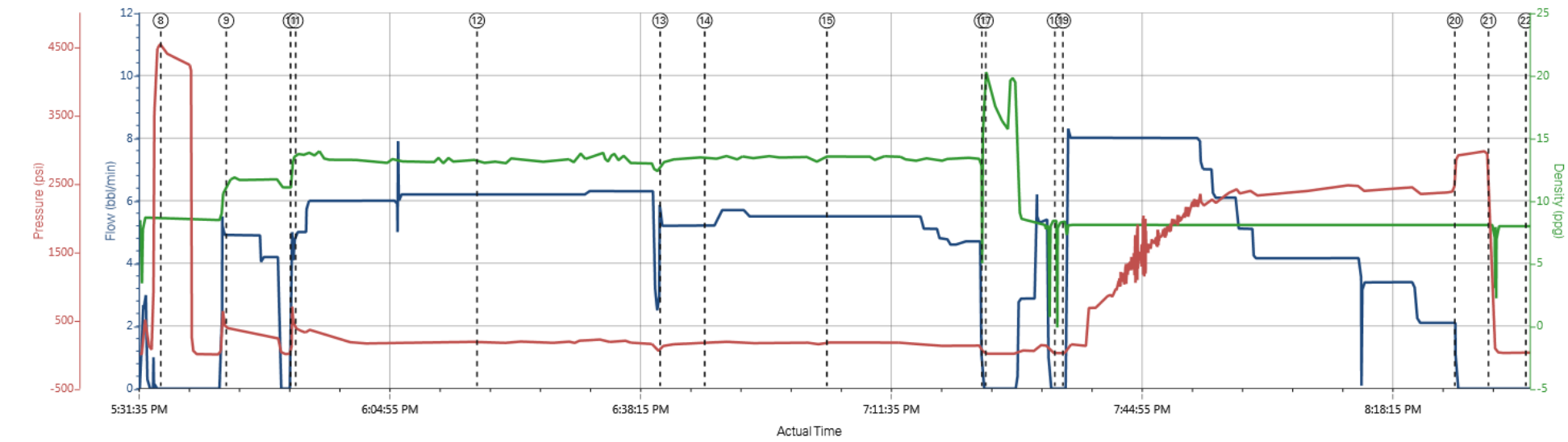
2.0 Real-Time Job Summary

2.1 Job Event Log

Type	Seq. No.	Activity	Graph Label	Date	Time	Source	Comb Pump Rate (bbl/min)	DH Density (ppg)	PS Pump Press (psi)	Comments
Event	1	Call Out	Call Out	2/24/2016	09:30:00	USER				CALLOUT FOR ON LOCATION AT 1600
Event	2	Crew Leave Yard	Crew Leave Yard	2/24/2016	14:30:00	USER				PRE JOURNEY JSA W/ CREW
Event	3	Arrive At Loc	Arrive At Loc	2/24/2016	15:30:00	USER				UPON ARRIVAL MET W/ COMPANY REP TO DISCUSS JOB PROCEDURE, RIG WAS READY
Event	4	Rig-Up Equipment	Rig-Up Equipment	2/24/2016	15:40:00	USER				PRE RIG UP HAZARD HUNT JSA W/ CREW
Event	5	Other	Other	2/24/2016	15:45:00	USER				FIELD MIX WATER ANALYSIS: PH-7, TEMP- 70, CHLORIDES- 0, IRON-0
Event	6	Pre-Job Safety Meeting	Pre-Job Safety Meeting	2/24/2016	17:15:00	USER				JSA W/ ALL INVOLVED PERSONNEL
Event	7	Start Job	Start Job	2/24/2016	17:30:56	COM5	0.00	8.40	13.00	
Event	8	Test Lines	Test Lines	2/24/2016	17:34:47	COM5	0.00	8.56	4492.00	TESTED LINES TO 4500 FOR 5 MIN, NO VISIBLE LEAKS
Event	9	Pump Spacer 1	Pump Spacer 1	2/24/2016	17:43:30	COM5	4.90	11.51	379.00	PUMPED 40 BBLS OF 11.5 TUNED SPACER AT 5 BPM AND 300 PSI
Event	10	Drop Bottom Plug	Drop Bottom Plug	2/24/2016	17:52:03	COM5	4.10	13.30	463.00	PLUG PRE LOADED AND WITNESSED BY COMPANY REP
Event	11	Pump Lead Cement	Pump Lead Cement	2/24/2016	17:52:43	COM5	5.00	13.75	363.00	PUMPED 1000 SKS OR 279.6 BBLS OF 13.2 LEAD CMT AT 6 BPM AND 172 PSI
Event	12	Check Weight	Check weight	2/24/2016	18:16:50	COM5	6.20	13.17	183.00	WEIGHT VERIFIED BY MUD SCALES
Event	13	Pump Tail Cement	Pump Tail Cement	2/24/2016	18:41:11	COM5	5.20	13.04	124.00	PUMPED 760 SKS OR 223.3 BBLS OF 13.5 TAIL CMT AT 5.5 BPM AND 175 PSI
Event	14	Check Weight	Check weight	2/24/2016	18:47:06	COM5	5.20	13.41	168.00	WEIGHT VERIFIED BY MUD SCALES
Event	15	Check Weight	Check weight	2/24/2016	19:03:21	COM5	5.50	13.53	173.00	WEIGHT VERIFIED BY MUD SCALES
Event	16	Shutdown	Shutdown	2/24/2016	19:23:56	COM5	0.00	17.95	20.00	
Event	17	Other	Other	2/24/2016	19:24:28	COM5	0.00	19.58	11.00	WASHED PUMPS AND LINES

Event	18	Drop Top Plug	Drop Top Plug	2/24/2016	19:33:39	COM5	0.00	-0.20	19.00	PLUG PRE LOADED AND WITNESSED BY COMPANY REP
Event	19	Pump Displacement	Pump Displacement	2/24/2016	19:34:44	COM5	0.00	8.35	21.00	PUMPED 262 BBLS OF H2O AT 8 BPM AND 1850 PSI W/ MMCR IN FIRST 40 AND BIOCIDES AND CLAYWEB THROUGHOUT, GOT 18 BBLS OF CMT BACK TO SURFACE
Event	20	Bump Plug	Bump Plug	2/24/2016	20:26:50	COM5	0.00	8.05	2904.00	FINAL CIRCULATING PRESSURE WAS 2390 PSI AND PLUG BUMPED AT 2900 PSI
Event	21	Other	Other	2/24/2016	20:31:17	COM5	0.00	8.06	1591.00	FLOATS HELD, GOT 2.5 BBLS BACK TO TRUCK
Event	22	End Job	End Job	2/24/2016	20:36:16	COM5				

SRC VISTA 43-2N-A



1 Call Out n/a;n/a;n/a	4 Rig-Up Equipment n/a;n/a;n/a	7 Start Job 0;8.4;13	10 Drop Bottom Plug 4.1;13.3;463	13 Pump Tail Cement 5.2;13.04;124	16 Shutdown 0;1795;20	19 Pump Displacement 0;8.35;21	22 End Job 0;797;34
2 Crew Leave Yard n/a;n/a;n/a	5 Other n/a;n/a;n/a	8 Test Lines 0;8.56;4492	11 Pump Lead Cement 5;13.75;363	14 Check weight 5.2;13.41;168	17 Other 0;19.58;11	20 Bump Plug 0;8.05;2904	
3 Arrive At Loc n/a;n/a;n/a	6 Pre-Job Safety Meeting 0;0;-32	9 Pump Spacer 14.9;11.51;379	12 Check weight 6.2;13.17;183	15 Check weight 5.5;13.53;173	18 Drop Top Plug 0;-0.2;19	21 Other 0;8.06;1591	

SRC VISTA 43-2N-A

