

Foundation Overview- Diffuse knapweed (*Centarea diffusa*)

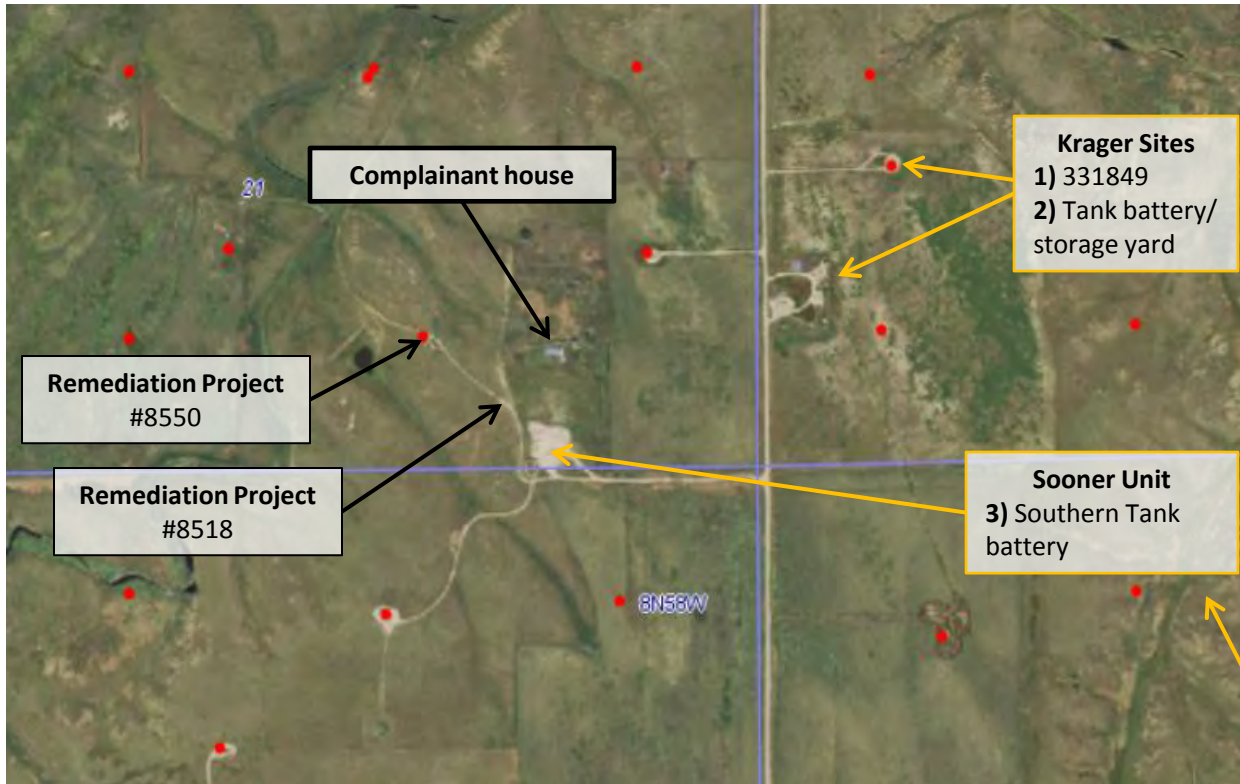
3 Locations Inspected:

Krager Sites

- 1) Location 331849- Portions mowed and knapweed was observed in the cuttings and a handful of individual Diffuse knapweeds left behind. Foundation instructed on 8/25/16 to pull and bag remaining plants. Foundation instructed on 8/30/16 to collect, remove, and dispose weed debris and seed heads properly from areas that were mowed.
- 2) Tank battery/storage yard- Portions mowed and knapweed was observed in the cuttings and several patches, varying in size, of Diffuse knapweed left behind. Foundation instructed on 8/25/16 to pull and bag remaining plants. Foundation instructed on 8/30/16 to collect, remove, and dispose weed debris and seed heads properly from areas that were mowed.

Sooner Unit

- 3) Southern Tank battery was mowed. Knapweed was observed in the cuttings and only a handful of individual knapweeds left behind. Foundation instructed on 8/25/16 to pull and bag remaining plants. Foundation instructed on 8/30/16 to collect, remove, and dispose weed debris and seed heads properly from areas that were mowed.



Krager Site- Well location (Location ID 331849)



Photo 1. Photo taken from entrance of location, facing East. Access road was mowed within the last 2 days based off conversations with other COGCC staff. No Diffuse knapweed or mowed seed heads were observed along access road.

Krager Site- Well location (Location ID 331849)

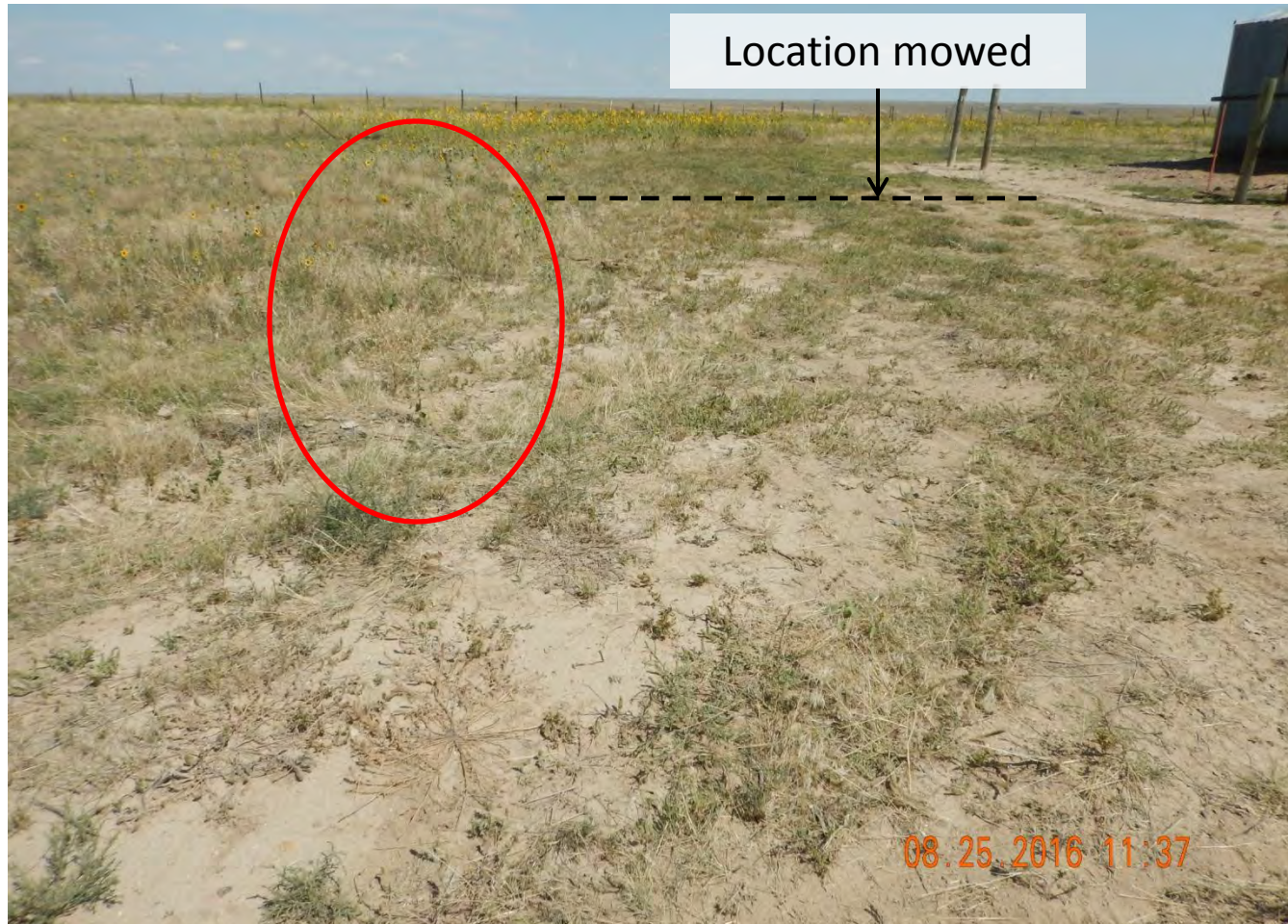


Photo 2. Photo taken from western location, facing North. Location was mowed within the last 2 days based off conversations with other COGCC staff. A handful of individual Diffuse knapweeds left behind highlighted in the red circle. Diffuse knapweed seed heads were observed in the mowed cuttings.

Krager Site- Well location (Location ID 331849)



Photo 3. Photo taken from western location, facing Southeast. Location was mowed within the last 2 days based off conversations with other COGCC staff. Diffuse knapweed seed heads were observed in the mowed cuttings.

Krager Site- Well location (Location ID 331849)

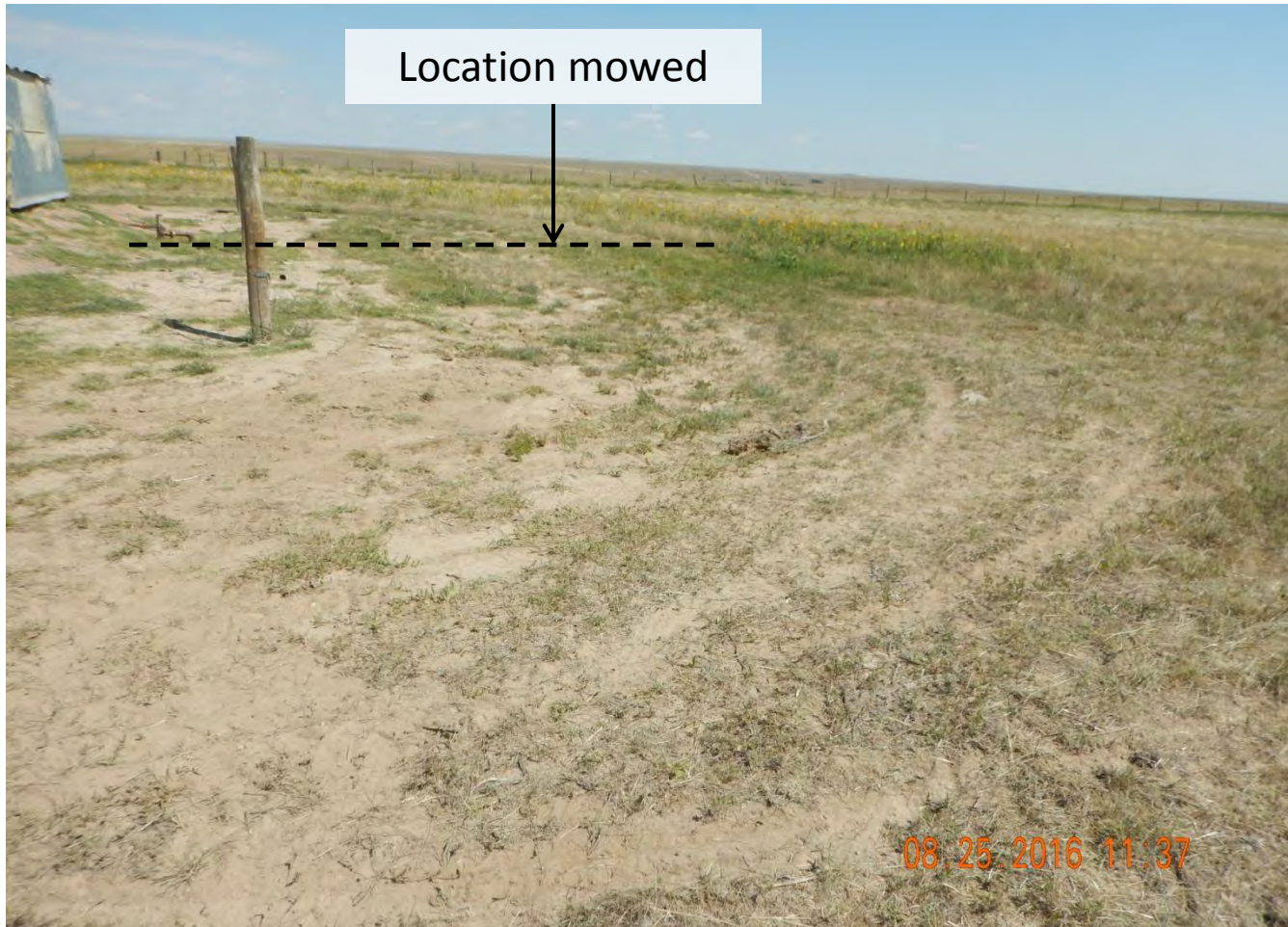


Photo 4. Photo taken from western location, facing North. Location was mowed within the last 2 days based off conversations with other COGCC staff. Diffuse knapweed seed heads were observed in the mowed cuttings.

Krager Site- Tank battery/storage yard

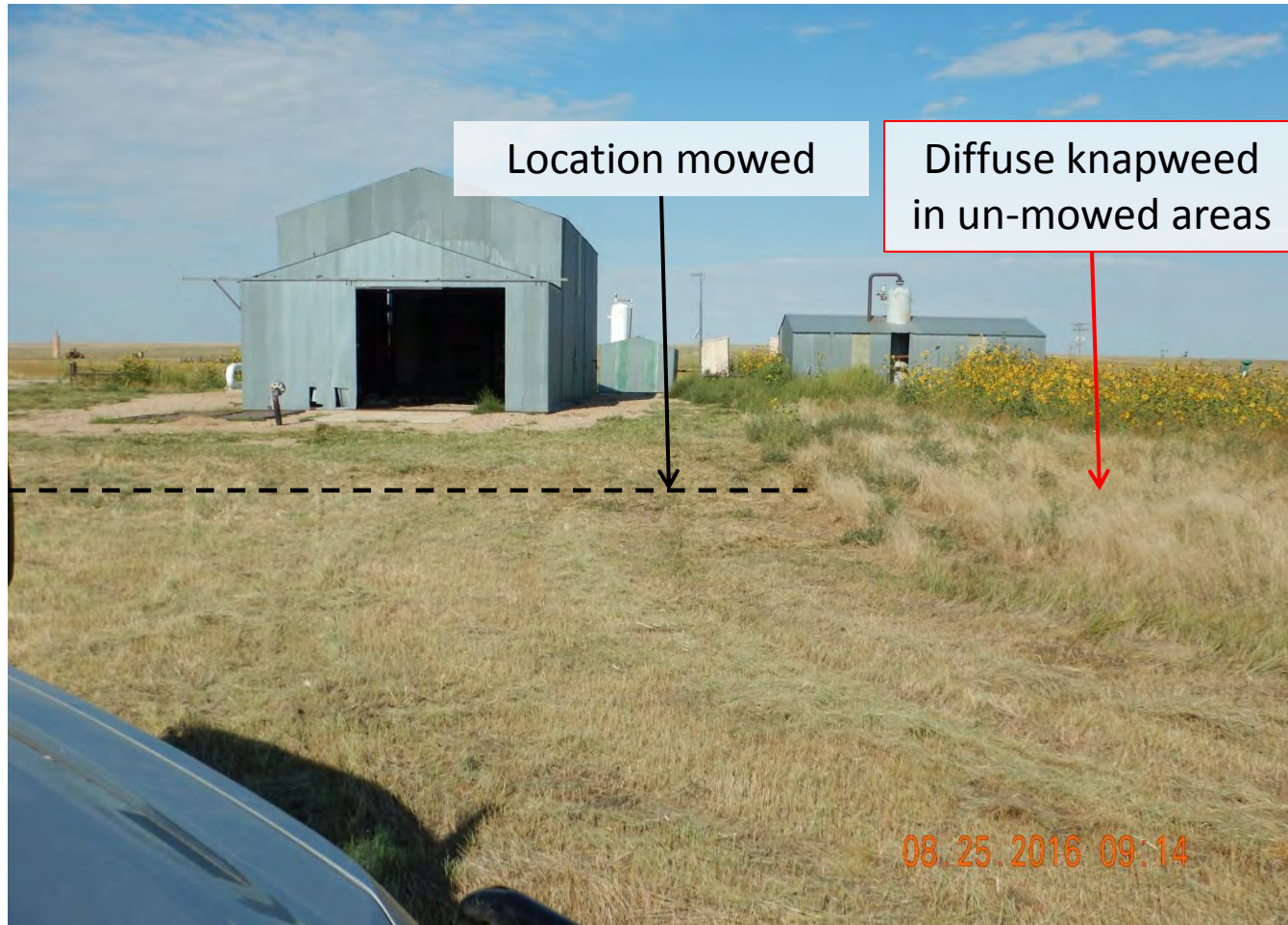


Photo 5. Photo taken from central location, facing West. Location was mowed within the last 2 days based off conversations with other COGCC staff. Diffuse knapweed seed heads were observed in the mowed cuttings and mature knapweed individuals were observed anywhere it was not mowed.

Krager Site- Tank battery/storage yard



Photo 6. Photo taken from central location, facing Southwest. Location was mowed within the last 2 days based off conversations with other COGCC staff. Diffuse knapweed seed heads were observed in the mowed cuttings and mature knapweed individuals were observed anywhere it was not mowed.

Krager Site- Tank battery/storage yard



Photo 7. Photo taken from central location, facing Southeast. Location was mowed within the last 2 days based off conversations with other COGCC staff. Diffuse knapweed seed heads were observed in the mowed cuttings and mature knapweed individuals were observed anywhere it was not mowed.

Krager Site- Tank battery/storage yard



Photo 8. Photo taken from central location, facing North. Location was mowed within the last 2 days based off conversations with other COGCC staff. Diffuse knapweed seed heads were observed in the mowed cuttings and mature knapweed individuals were observed anywhere it was not mowed.

Krager Site- Tank battery/storage yard



Photo 9. Close-up photo of Diffuse knapweed (*Centarea diffusa*) found throughout un-mowed areas of location.