



TEMPERATURE CCL LOG  
QUICK LOOK

Company	TERRA EP		
Well	RU 423-7		
Field	RULISON		
County	GARFIELD	State	COLORADO
Location:	API #: 05-045-23131-00		Other Services
QtrQtr: SENW			
LAT. 39.456899			
LOG. -107.819713			
SEC 7 TWP 7S RGE 93W			
Permanent Datum	G.L.	Elevation	Elevation
Log Measured From	K.B.	Ft Above PD	K.B. 7363'
Drilling Measured From	K.B.		D.F. 7339'
			G.L. 7339'
Date	08-01-2016		
Run Number	ONE		
Depth Driller	9606'		
Present Depth Driller	9574'		
Depth Logger	9580'		
Bottom Logged Interval	9580'		
Top Log Interval	SURFACE		
Fluid Level	FULL		
Type Fluid	WATER		
Max. Recorded Temp.	18.9 ° F		
Estimated Cement Top	4250'		
Equipment Number	216		
Location	GRAND JCT.		
Recorded By	MCBROOM		
Witnessed By	MR. RAGSDALE	MR. OAKS	
Borehole Record			
Run Number	Bit	From	To
		Size	Weight
		4.50"	11.6#
			SURFACE
			T.D.

<<< Fold Here >>>

All interpretations are opinions based on inferences from electrical or other measurements and we cannot and do not guarantee the accuracy or correctness of any interpretation, and we shall not, except in the case of gross or willful negligence on our part, be liable or responsible for any loss, costs, damages, or expenses incurred or sustained by anyone resulting from any interpretation made by any of our officers, agents or employees. These interpretations are also subject to our general terms and conditions set out in our current Price Schedule.

WARRIOR 7.0 SOFTWARE - Comments

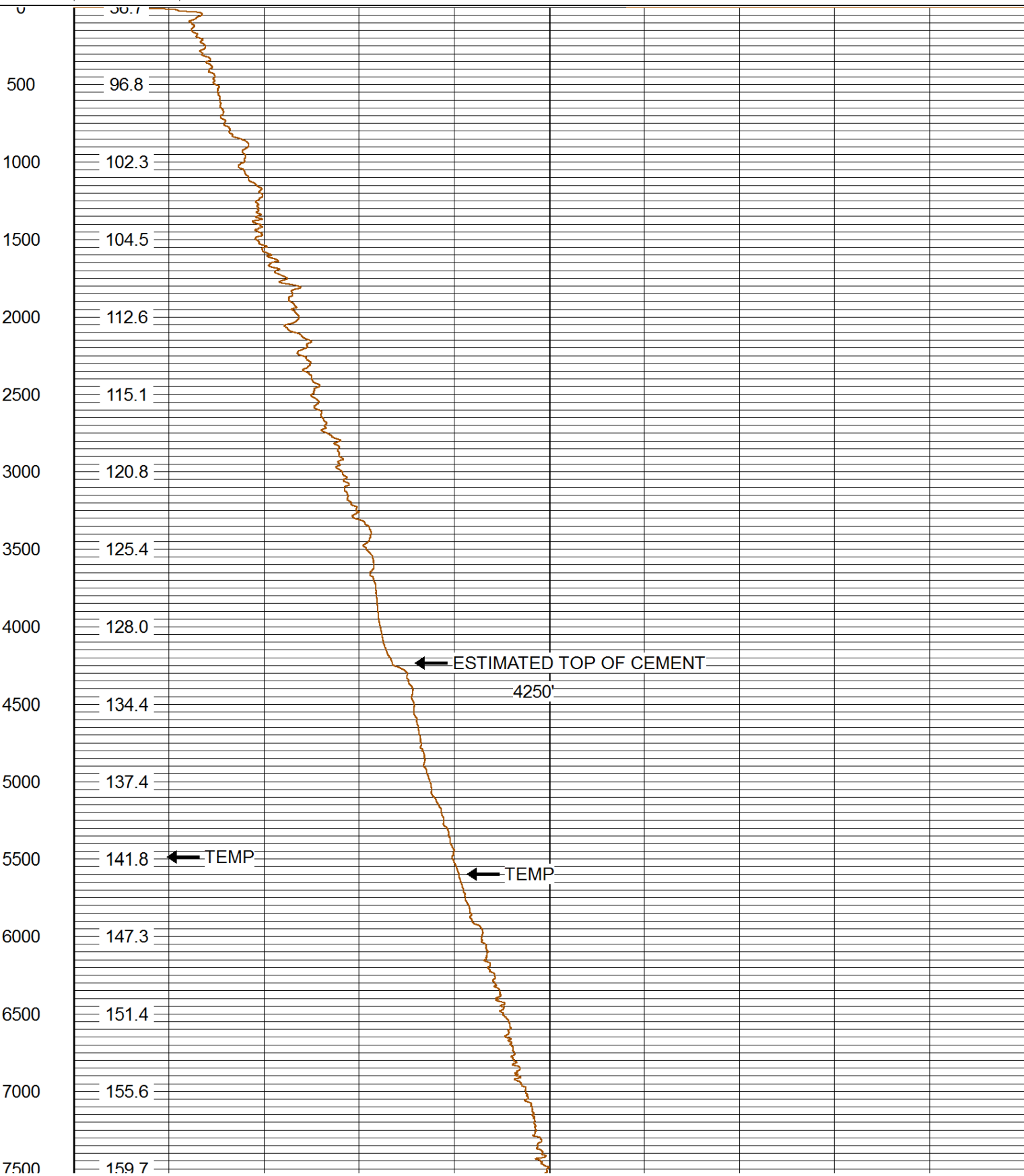
NOTE; THERE WAS NO LOG FOR DEPTH CONTROL.  
SCALE MAIN PASS 5"= 100'.  
NOTE; SHORT JOINT AT 5943' TO 5966'.

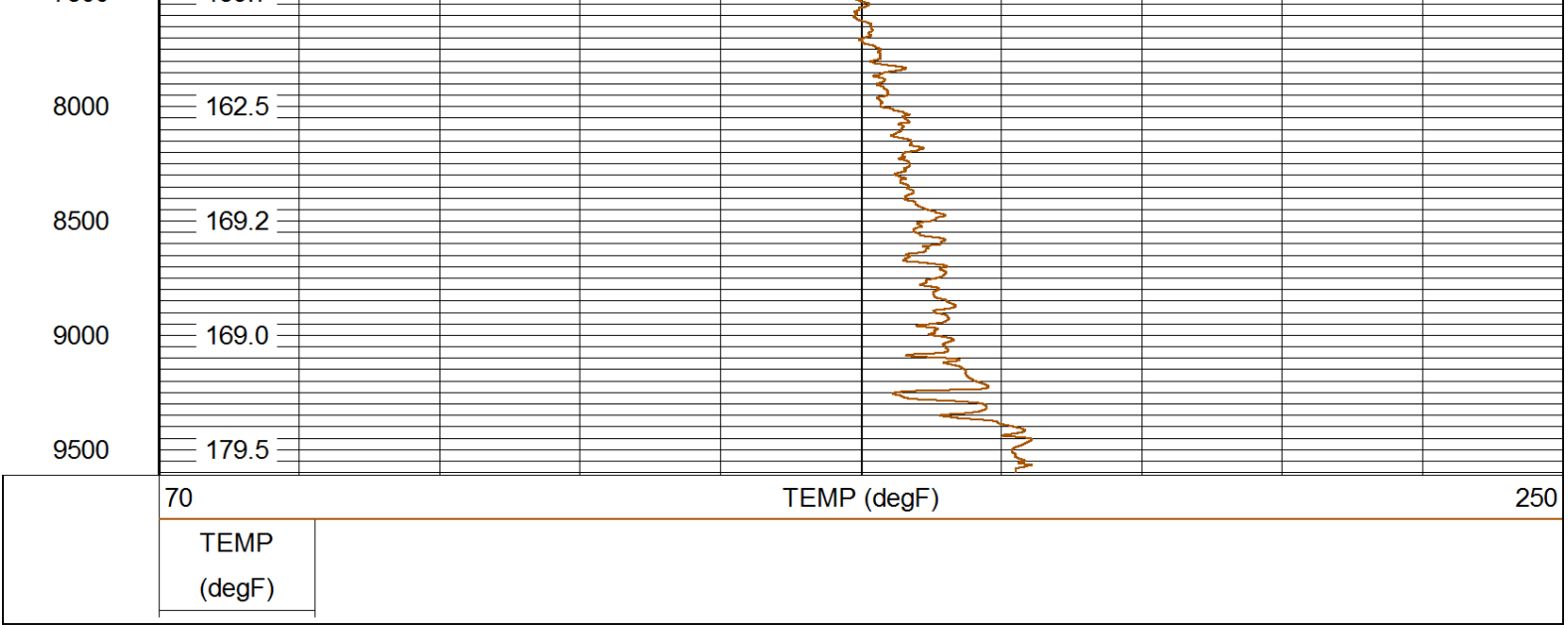


MAIN PASS QUICK LOOK

Database File: 08012016\_terraep ru 423-7.db  
Dataset Pathname: mainpass/pass2.1  
Presentation Format: rmtemp\_q  
Dataset Creation: Mon Aug 01 22:00:19 2016 by Calc SCH 120430  
Charted by: Depth in Feet scaled 1:10000

70	TEMP (degF)		250
	TEMP		
	(degF)		





Company	TERRA EP
Well	RU 423-7
Field	RULISON
County	GARFIELD
State	COLORADO