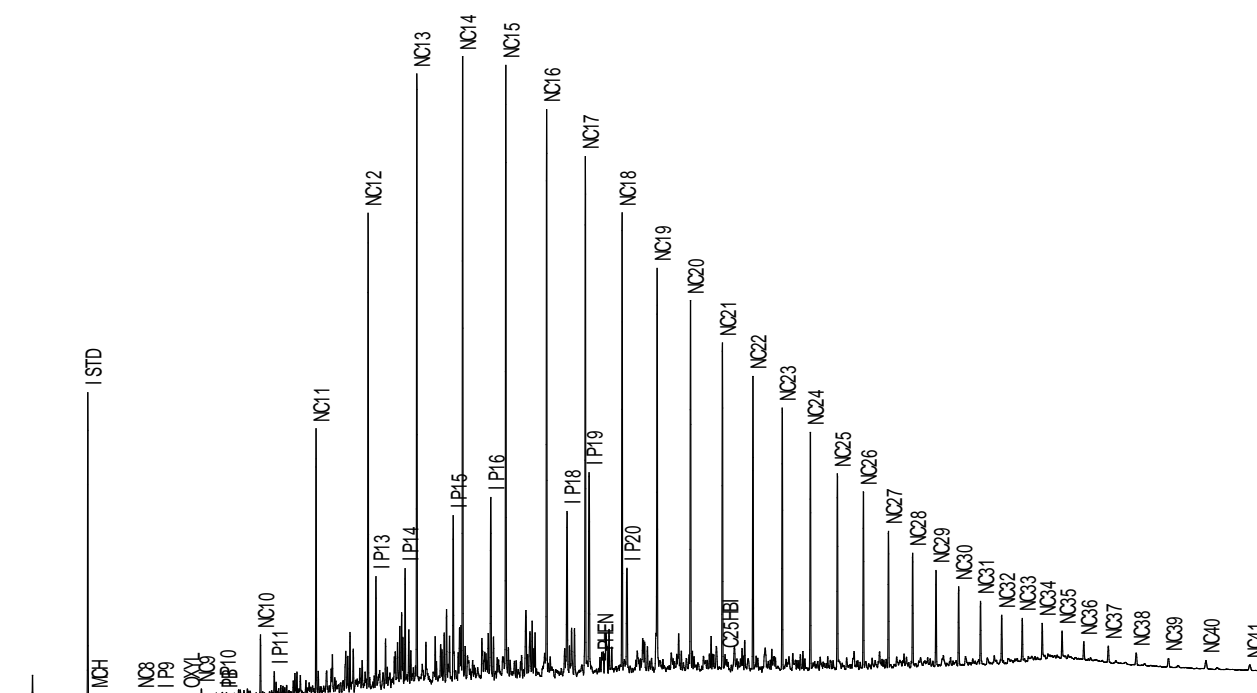


Company:	Dolan Integration Group	Client ID:	DIG-009413
Country:		Project #:	BH-92606
Basin:		Lab ID:	6124019933
Lease:		Sample Type:	Oil
Block:		Sampling Point:	
Field:		Formation:	
Well Name:	DIG-009413	Geologic Age:	
Latitude:		Top Depth:	
Longitude:		Bottom Depth:	
Preparation:		GC Method:	G02G

Whole Oil GC Trace

G3160883.D



WGC parameters	
Pristane/Phytane	1.79
Pristane/ nC_{17}	0.59
Phytane/ nC_{18}	0.38
$nC_{18}/(nC_{18}+nC_{19})$	0.52
$nC_{17}/(nC_{17}+nC_{29})$	0.81
CPI Hunt ⁴	1.01
Normal Paraffins	40.4
Isoprenoids	7.6
Cycloparaffins	0.0
Branched (iso-) Paraffins	
BTX aromatics	0.0
Resolved unknowns	51.8

Thompson ¹	
A.	BZ/ nC_6
B.	TOL/ nC_7
C.	$(nC_6+nC_7)/(CH+MCH)$
I.	Isoheptane Value
F.	nC_7/MCH
U.	CH/MCP
R.	$nC_7/2MH$
S.	$nC_6/22DMB$
H.	Heptane Value
	MCH/ nC_7
	mpXYL/ nC_8

Mango ²	
P ₁	
P ₂	
P ₃	
5N ₁	
N ₂	
6N ₁	100.00
K ₁	
K ₂	
5N ₁ /6N ₁	
P ₃ /N ₂	
In(24DMP/23DMP)	

Halpern ³	
Tr ₁	
Tr ₂	
Tr ₃	
Tr ₄	
Tr ₅	
Tr ₇	
Tr ₈	
C ₁	
C ₂	
C ₃	
C ₄	
C ₅	

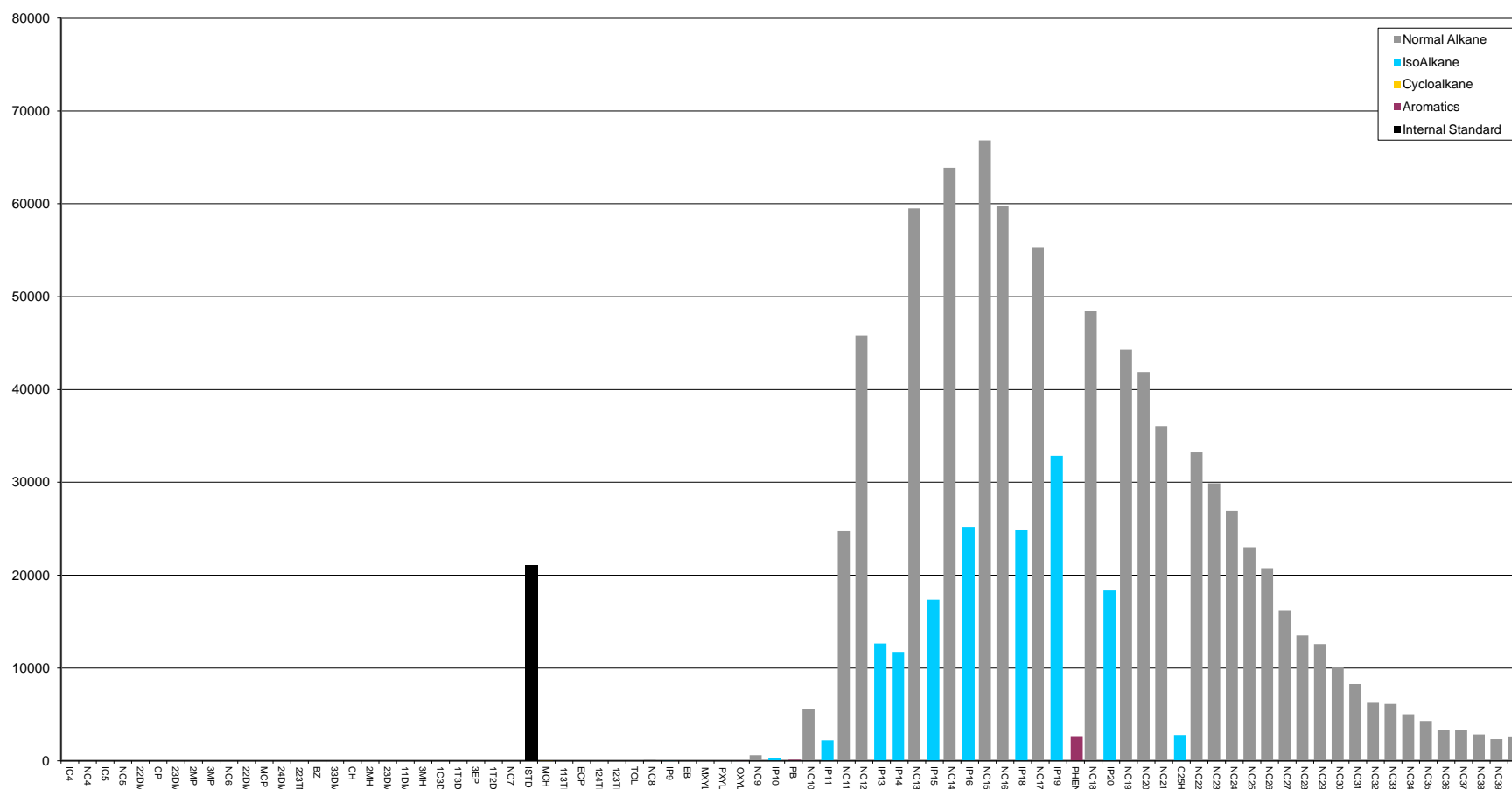
Company:	Dolan Integration Group	Client ID:	DIG-009413
Well Name:	DIG-009413	Project #:	BH-92606
Depth:	-	Lab ID:	6124019933
Sampling Point:		File Name:	G3160883.D

Peak Label	Compound Name	Ret. Time	Area	Height	ppt (Area)	ppt (Hght)
IC4	Iso-alkane C4					
NC4	Normal Alkane C4					
IC5	Iso-alkane C5					
NC5	Normal Alkane C5					
22DMB	2,2-Dimethylbutane					
CP	Cyclopentane					
23DMB	2,3-Dimethylbutane					
2MP	2-Methylpentane					
3MP	3-Methylpentane					
NC6	Normal Alkane C6					
22DMP	2,2-Dimethylpentane					
MCP	Methylcyclopentane					
24DMP	2,4-Dimethylpentane					
223TMB	2,2,3-Trimethylbutane					
BZ	Benzene					
33DMP	3,3-Dimethylpentane					
CH	Cyclohexane					
2MH	2-Methylhexane					
23DMP	2,3-Dimethylpentane					
11DMCP	1,1-Dimethylcyclopentane					
3MH	3-Methylhexane					
1C3DMCP	1-cis-3-Dimethylcyclopentane					
1T3DMCP	1-trans-3-Dimethylcyclopentane					
3EP	3-Ethylpentane					
1T2DMCP	1-trans-2-Dimethylcyclopentane					
NC7	Normal Alkane C7					
ISTD	Internal Standard	10.325	21009	9544	3.48	3.48
MCH	Methylcyclohexane	10.961	66	23	0.01	0.01
113TMCP	1,1,3,-Trimethylcyclopentane					
ECP	Ethylcyclopentane					
124TMCP	1,2,4-Trimethylcyclopentane					
123TMCP	1,2,3-Trimethylcyclopentane					
TOL	Toluene					
NC8	Normal Alkane C8	15.349	115	35	0.02	0.01
IP9	Isoprenoid C9	17.231	71	18	0.01	0.01
EB	Ethyl-benzene					
MXYL	<i>m</i> -xylene					
PXYL	<i>p</i> -xylene					
OXYL	<i>o</i> -xylene	19.694	72	16	0.01	0.01
NC9	Normal Alkane C9	21.107	620	218	0.10	0.08
IP10	Isoprenoid C10	23.099	348	108	0.06	0.04
PB	Propyl-benzene	23.262	117	28	0.02	0.01
NC10	Normal Alkane C10	26.714	5559	1916	0.92	0.70
IP11	Isoprenoid C11	28.022	2220	752	0.37	0.27
NC11	Normal Alkane C11	31.990	24747	8377	4.10	3.05
NC12	Normal Alkane C12	36.929	45807	15027	7.59	5.48
IP13	Isoprenoid C13	37.672	12651	3577	2.10	1.30
IP14	Isoprenoid C14	40.442	11737	3729	1.94	1.36
NC13	Normal Alkane C13	41.555	59496	19243	9.86	7.02
IP15	Isoprenoid C15	45.007	17334	5282	2.87	1.93
NC14	Normal Alkane C14	45.902	63876	19670	10.58	7.17

Company: Dolan Integration Group
Well Name: DIG-009413
Depth: -
Sampling Point:

Client ID: DIG-009413
Project #: BH-92606
Lab ID: 6124019933
File Name: G3160883.D

Histogram Based on Area



Parameter	Formula
WGC Parameters	
Pristane/Phytane	IP19/IP20
Pristane/nC17	IP19/NC17
Phytane/nC18	IP20/NC18
nC ₁₈ /(nC ₁₈ +nC ₁₉)	NC18/(NC18+NC19)
nC ₁₇ /(nC ₁₇ +nC ₂₉)	NC17/(NC17+NC29)
CPI Hunt ⁴	$((NC23+NC25+NC27+NC29+NC31)+(NC25+NC27+NC29+NC31+NC33))/(2*(NC24+NC26+NC28+NC30+NC32))$
Normal Paraffins	$100*(NC4+NC5+NC6+NC7+NC8+NC9+NC10+NC11+NC12+NC13+NC14+NC15+NC16+NC17+NC18+NC19+NC20+NC21+NC22+NC23+NC24+NC25+NC26+NC27+NC28+NC29+NC30+NC31+NC32+NC33+NC34+NC35+NC36+NC37+NC38+NC39+NC40+NC41)/TOTAL_RESOLVED$
Isoprenoids	$100*(IP9+IP10+IP11+IP13+IP14+IP15+IP16+IP18+IP19+IP20+C25HBI)/TOTAL_RESOLVED$
Cycloparaffins	$100*(CP+MCP+CH+11DMCP+1T3DMCP+1T2DMCP+MCH+113TMCP+ECP+124TMCP+123TMCP+1C3DMCP+1C2DMCP)/TOTAL_RESOLVED$
Branched (iso-) Paraffins	$100*(IC4+IC5+22DMB+23DMB+2MP+3MP+22DMP+24DMP+223TMB+33DMP+2MH+23DMP+3MH+3EP)/TOTAL_RESOLVED$
BTX aromatics	$100*(BZ+TOL+MXYL+PXYL+OXYL)/TOTAL_RESOLVED$ (*OXYL added 05/21/2007)
Thompson¹	
BZ/nC6	BZ/NC6
TOL/nC7	TOL/NC7
(nC6+nC7)/(CH+MCH)	(NC6+NC7)/(CH+MCH)
Isoheptane Value	$(2MH+3MH)/(1C3DMCP+1T3DMCP+1T2DMCP)$
nC7/MCH	NC7/MCH
CH/MCP	CH/MCP
nC7/2MH	NC7/2MH
nC6/22DMB	NC6/22DMB
Heptane Value	$100*NC7/(CH+2MH+23DMP+11DMCP+3MH+1C3DMCP+1T3DMCP+1T2DMCP+MCH+NC7)$
MCH/nC7	MCH/NC7
mpXYL/nC8	(MXYL+PXYL)/NC8
Mango²	
P1	$100*NC7/(22DMP+24DMP+223TMB+33DMP+2MH+23DMP+11DMCP+3MH+1C3DMCP+1T3DMCP+3EP+1T2DMCP+NC7+MCH+ECP+TOL)$
P2	$100*(2MH+3MH)/(22DMP+24DMP+223TMB+33DMP+2MH+23DMP+11DMCP+3MH+1C3DMCP+1T3DMCP+3EP+1T2DMCP+NC7+MCH+ECP+TOL)$
P3	$100*(3EP+33DMP+23DMP+24DMP+22DMP+223TMB)/(22DMP+24DMP+223TMB+33DMP+2MH+23DMP+11DMCP+3MH+1C3DMCP+1T3DMCP+3EP+1T2DMCP+NC7+MCH+ECP+TOL)$
5N1	$100*(ECP+1T2DMCP)/(22DMP+24DMP+223TMB+33DMP+2MH+23DMP+11DMCP+3MH+1C3DMCP+1T3DMCP+3EP+1T2DMCP+NC7+MCH+ECP+TOL)$
N2	$100*(11DMCP+1C3DMCP+1T3DMCP)/(22DMP+24DMP+223TMB+33DMP+2MH+23DMP+11DMCP+3MH+1C3DMCP+1T3DMCP+3EP+1T2DMCP+NC7+MCH+ECP+TOL)$
6N1	$100*(MCH+TOL)/(22DMP+24DMP+223TMB+33DMP+2MH+23DMP+11DMCP+3MH+1C3DMCP+1T3DMCP+3EP+1T2DMCP+NC7+MCH+ECP+TOL)$
K1	$(2MH+23DMP)/(3MH+24DMP)$
K2	$(3EP+33DMP+23DMP+24DMP+22DMP+223TMB)/(2MH+3MH+11DMCP+1C3DMCP+1T3DMCP)$
5N1/6N1	$(ECP+1T2DMCP)/(MCH+TOL)$
P3/N2	$(3EP+33DMP+23DMP+24DMP+22DMP+223TMB)/(11DMCP+1C3DMCP+1T3DMCP)$
ln(24DMP/23DMP)	ln(24DMP/23DMP)
Halpern³	
Tr1	TOL/11DMCP
Tr2	NC7/11DMCP
Tr3	3MH/11DMCP
Tr4	2MH/11DMCP
Tr5	$(2MH+3MH)/11DMCP$
Tr7	1T3DMCP/11DMCP
Tr8	$(2MH+3MH)/(22DMP+23DMP+24DMP+33DMP+3EP)$
C1	$22DMP/(22DMP+23DMP+24DMP+33DMP+3EP)$
C2	$23DMP/(22DMP+23DMP+24DMP+33DMP+3EP)$
C3	$24DMP/(22DMP+23DMP+24DMP+33DMP+3EP)$
C4	$33DMP/(22DMP+23DMP+24DMP+33DMP+3EP)$
C5	$3EP/(22DMP+23DMP+24DMP+33DMP+3EP)$

1	2	3	4	5	6
INFO	Name	Range Start	Range End	Add Next sample into next	Sample display distance
PAGE	SUMMARY	A1	BE174	workbook	
PAGE	Histogram	A1	I43	workbook	
FILE				GC_WHOIL_[F]_[S]_[D]-[B]_[P].xls	

7	8	9	10	11
Max samples in one page	Tick			