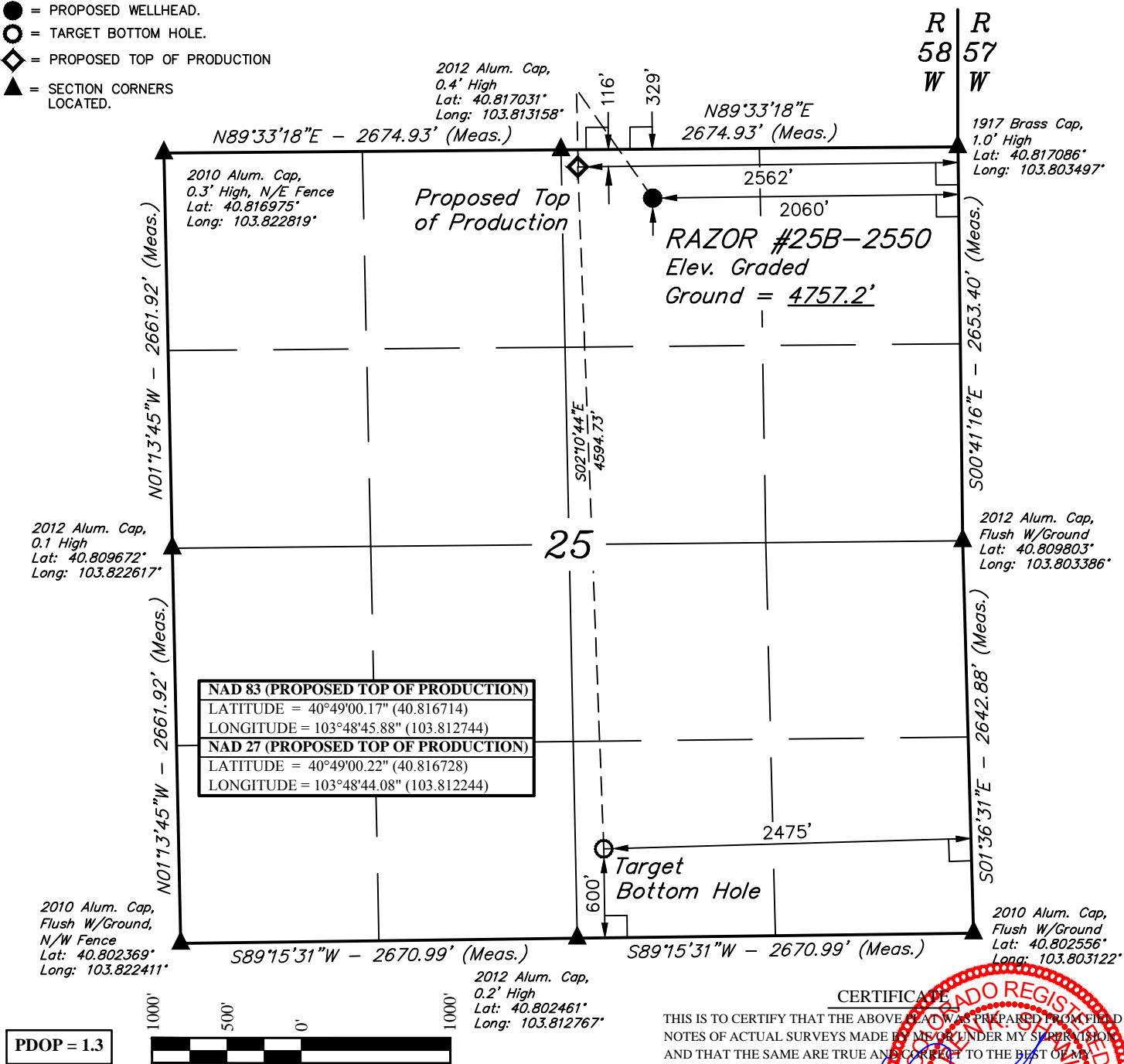


**LEGEND:**

- = 90° SYMBOL  
 ● = PROPOSED WELLHEAD.  
 ○ = TARGET BOTTOM HOLE.  
 ◆ = PROPOSED TOP OF PRODUCTION  
 ▲ = SECTION CORNERS LOCATED.

**T10N, R58W, 6th P.M.**



PDOP = 1.3



NAD 83 (TARGET BOTTOM HOLE)	NAD 83 (SURFACE LOCATION)
LATITUDE = 40°48'14.81" (40.804114)	LATITUDE = 40°48'58.10" (40.816139)
LONGITUDE = 103°48'43.63" (103.812119)	LONGITUDE = 103°48'39.32" (103.810922)
NAD 27 (TARGET BOTTOM HOLE)	NAD 27 (SURFACE LOCATION)
LATITUDE = 40°48'14.86" (40.804128)	LATITUDE = 40°48'58.15" (40.816153)
LONGITUDE = 103°48'41.82" (103.811617)	LONGITUDE = 103°48'37.52" (103.810422)

**BASIS OF BEARINGS**

BASIS OF BEARINGS IS A G.P.S. OBSERVATION

**BASIS OF ELEVATION**

SPOT ELEVATION LOCATED AT THE NORTHEAST CORNER OF SECTION 15, T9N, R58W, 6th P.M. TAKEN FROM THE GATEHOOK SPRING, QUADRANGLE, COLORADO, WELD COUNTY, 7.5 MINUTE QUAD (TOPOGRAPHIC MAP) PUBLISHED BY THE UNITED STATES DEPARTMENT OF THE INTERIOR, GEOLOGICAL SURVEY. SAID ELEVATION IS MARKED AS BEING 4679 FEET.

**CERTIFICATE**  
 THIS IS TO CERTIFY THAT THE ABOVE PLAT WAS PREPARED FROM FIELD NOTES OF ACTUAL SURVEYS MADE BY ME OR UNDER MY SUPERVISION, AND THAT THE SAME ARE TRUE AND CORRECT TO THE BEST OF MY KNOWLEDGE AND BELIEF.

REGISTERED LAND SURVEYOR  
 REGISTRATION NO. 28285  
 STATE OF COLORADO

**WHITING OIL & GAS CORP.**

**RAZOR #25B-2550**  
**NW 1/4 NE 1/4, SECTION 25, T10N, R58W, 6th P.M.**  
**WELD COUNTY, COLORADO**

SURVEYED BY: JARED CHRISTOPHER, B.C.	DATE: 03-10-15
DRAWN BY: J.S.	DATE DRAWN: 10-17-13
SCALE: 1" = 1000'	REVISED: 08-26-15 K.B.

**WELL LOCATION PLAT**



**UELS, LLC**  
 Corporate Office \* 85 South 200 East  
 Vernal, UT 84078 \* (435) 789-1017



**LEGEND:**

- = 90° SYMBOL  
 = PROPOSED WELLHEAD.  
 = TARGET BOTTOM HOLE.  
 = PROPOSED TOP OF PRODUCTION  
 = SECTION CORNERS LOCATED.

*T10N, R58W, 6th P.M.*

*R*  
*58*  
*W*

*2011 Alum. Cap,  
0.6' Below Ground  
Lat: 40.831603°  
Long: 103.803653°*

*N89°45'45"E - 2674.52' (Meas.)*

*N89°45'45"E - 2674.52' (Meas.)*

*Set Stone  
Lat: 40.831547°  
Long: 103.822978°*

*2012 Alum. Cap,  
0.3' High  
Lat: 40.831575°  
Long: 103.813317°*

*N00°29'14"W - 2655.18' (Meas.)*

*S00°31'12"E - 2648.35' (Meas.)*

*2012 Alum. Cap,  
0.4' High  
Lat: 40.824261°  
Long: 103.822900°*

*1917 Brass Cap,  
2.0' High  
Lat: 40.824336°  
Long: 103.803572°*

*N00°29'14"W - 2655.18' (Meas.)*

*S00°28'24"E - 2642.62' (Meas.)*

*2010 Alum. Cap,  
0.3' High, N/E Fence  
Lat: 40.816975°  
Long: 103.822819°*

*N89°33'18"E - 2674.93' (Meas.)*

*N89°33'18"E - 2674.93' (Meas.)*

*2012 Alum. Cap,  
0.4' High  
Lat: 40.817031°  
Long: 103.813158°*

*1917 Brass Cap,  
1.0' High  
Lat: 40.817086°  
Long: 103.803497°*

*Proposed Well  
Bore Path*

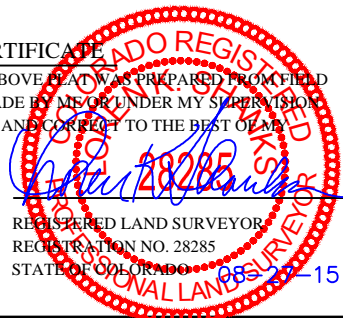
*Proposed Top  
of Production*

*● Surface Location*

**CERTIFICATE**

THIS IS TO CERTIFY THAT THE ABOVE PLAT WAS PREPARED FROM FIELD NOTES OF ACTUAL SURVEYS MADE BY ME OR UNDER MY SUPERVISION AND THAT THE SAME ARE TRUE AND CORRECT TO THE BEST OF MY KNOWLEDGE AND BELIEF.

REGISTERED LAND SURVEYOR  
REGISTRATION NO. 28285  
STATE OF COLORADO

**BASIS OF BEARINGS**

BASIS OF BEARINGS IS A G.P.S. OBSERVATION

**BASIS OF ELEVATION**

SPOT ELEVATION LOCATED AT THE NORTHEAST CORNER OF SECTION 15, T9N, R58W, 6th P.M. TAKEN FROM THE GATEHOOK SPRING, QUADRANGLE, COLORADO, WELD COUNTY, 7.5 MINUTE QUAD (TOPOGRAPHIC MAP) PUBLISHED BY THE UNITED STATES DEPARTMENT OF THE INTERIOR, GEOLOGICAL SURVEY. SAID ELEVATION IS MARKED AS BEING 4679 FEET.

**WHITING OIL & GAS CORP.**

**RAZOR #25B-2550 (WELL BORE)**  
**SW 1/4 SE 1/4, SECTION 24, T10N, R58W, 6th P.M.**  
**WELD COUNTY, COLORADO**

SURVEYED BY: JARED CHRISTOPHER, B.C.	DATE: 03-10-15
DRAWN BY: K.B.	DATE DRAWN: 08-26-15
SCALE: 1" = 1000'	REVISED: 00-00-00

**WELL LOCATION PLAT**

**UELS, LLC**  
Corporate Office \* 85 South 200 East  
Vernal, UT 84078 \* (435) 789-1017